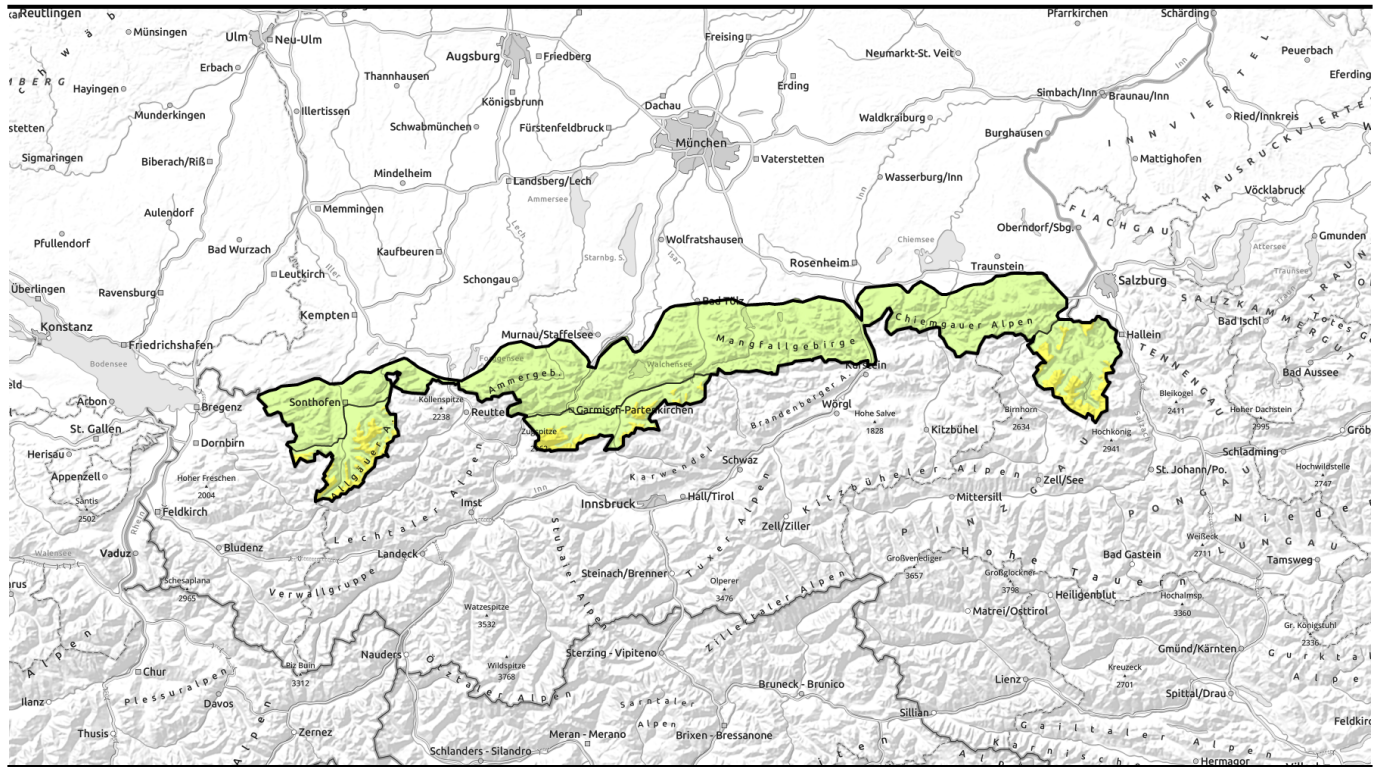


Avalanche report for Thursday, 19.01.2023



Beware of trigger-sensitive snowdrifts at high altitude adjacent to ridgelines

- 2000 m
 Allgäuer Hauptkamm, Werdenfelser Alpen, Berchtesgadener Alpen
- Allgäuer Vorberge, Ammergauer Alpen, Bayerische Voralpen West, Bayerische Voralpen Mitte, Bayerische Voralpen Ost, Chiemgauer Alpen West, Chiemgauer Alpen Ost

Avalanche problems



Danger ratings

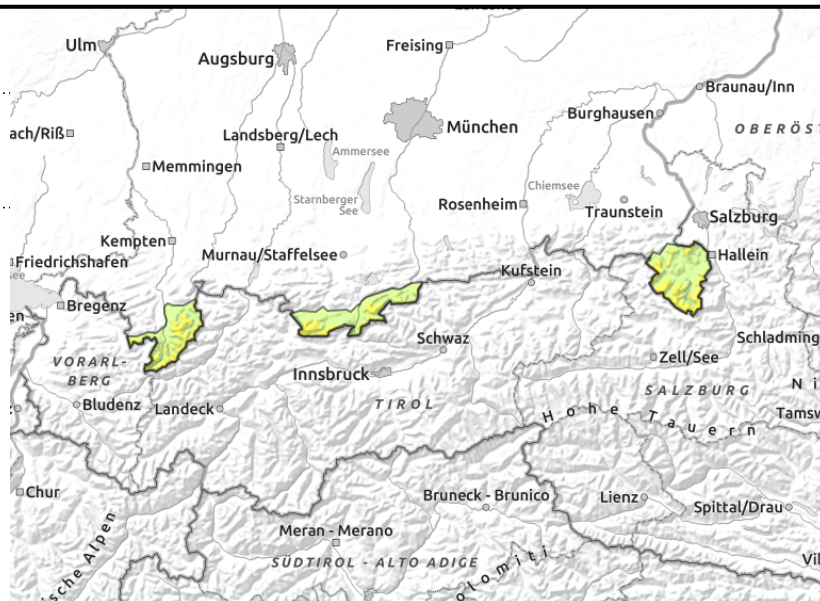
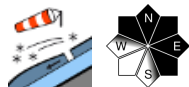


Expositions



Avalanche report for Thursday, 19.01.2023

Allgäuer Hauptkamm, Werdenfelser Alpen, Berchtesgadener Alpen



Trigger-sensitive snowdrift accumulations are blanketed by new snow and difficult to detect

At high altitudes avalanche danger is moderate, elsewhere it is low. The main problem are snowdrifts. Quite a few avalanche prone locations are located in steep ridgeline terrain in NW-E-SE aspects as well as in wind-loaded gullies and bowls where small-sized slab avalanches are still triggerable by one sole person; whereas medium-sized slab avalanches can only be triggered by large additional loading.

Snowpack structure

The little new snow forecast by Thursday morning will loosely blanket small trigger-sensitive snowdrift accumulations without wind impact which will make them difficult to detect. Old snowpack depths are below average and strongly wind-impacted. Windward zones are partly blown bare down to the ground; leeward drifted snow accumulates in steep gullies and bowls adjacent to ridgelines. The older snowdrift layers have gradually settled and bonded with each other. However, weak intermediate layers still persist at transitions to the old snowpack.

Outlook

It will stay chilly and time and again there will be a little snowfall. Avalanche danger levels are not expected to change significantly over the next few days.

Avalanche problems



Danger ratings

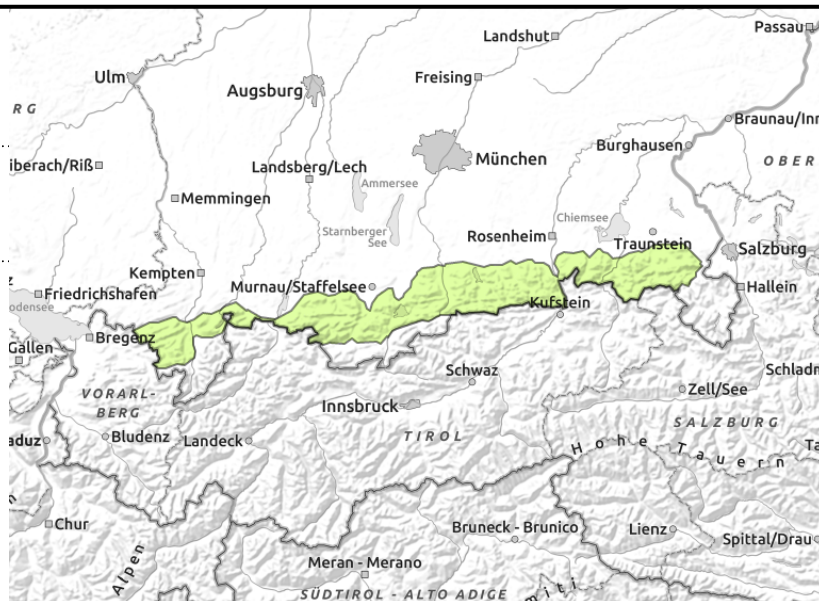
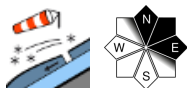


Expositions



Avalanche report for Thursday, 19.01.2023

Allgäuer Vorberge, Ammergauer Alpen, Bayerische Voralpen West, Bayerische Voralpen Mitte, Bayerische Voralpen Ost, Chiemgauer Alpen West, Chiemgauer Alpen Ost



Heed risk of taking a fall on smooth snowpack surfaces in steep terrain

Avalanche danger is low. The main problem are snowdrifts. Sporadically, small-scale snowdrift accumulations are still triggerable on ridgeline slopes in N/E aspects as well as in wind-loaded gullies and bowls. Avalanches tend to remain small-sized. The risks of taking a fall outweigh those of being buried in snow masses.

Snowpack structure

Most of the snow that fell in the last few days was transported; snow depths vary widely; ridges and crests are windblown. Smaller snowdrift accumulations that are still prone to triggering were deposited on leeward summit slopes. By Thursday morning this situation will be blanketed by a few centimeters of loose new snow deposited without wind impact. There is still only very little snow.

Outlook

It will stay chilly and time and again there will be a little snowfall. Avalanche danger levels are not expected to change significantly over the next few days.

Translated by Jeffrey McCabe, www.creativtrans.com

Avalanche problems



Danger ratings



Expositions

