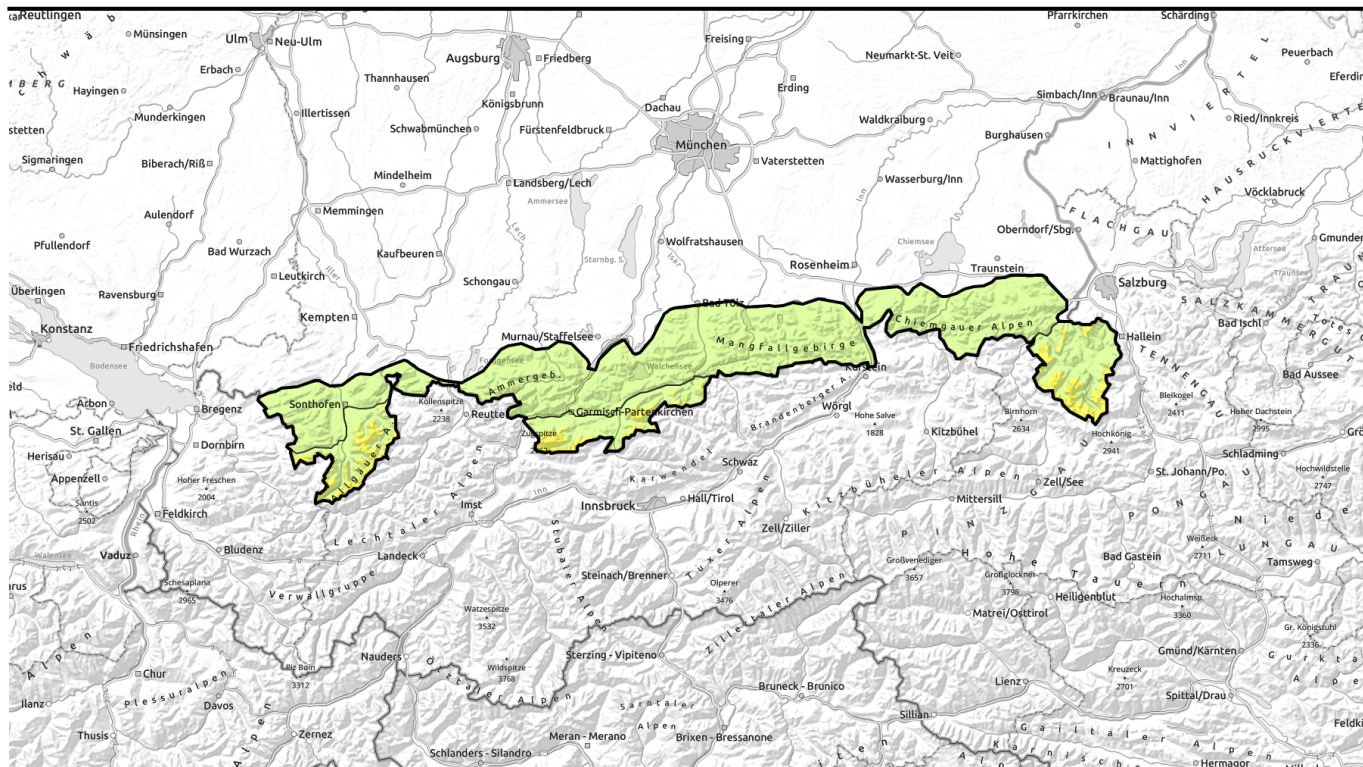


# Avalanche report for Wednesday, 18.01.2023



## Close to ridgelines at high altitude still trigger-sensitive snowdrift accumulations



1800 m

Allgäuer Hauptkamm, Werdenfeller Alpen, Berchtesgadener Alpen



Allgäuer Vorberge, Ammergauer Alpen, Bayerische Voralpen West, Bayerische Voralpen Mitte, Bayerische Voralpen Ost, Chiemgauer Alpen West, Chiemgauer Alpen Ost



### Avalanche problems



### Danger ratings

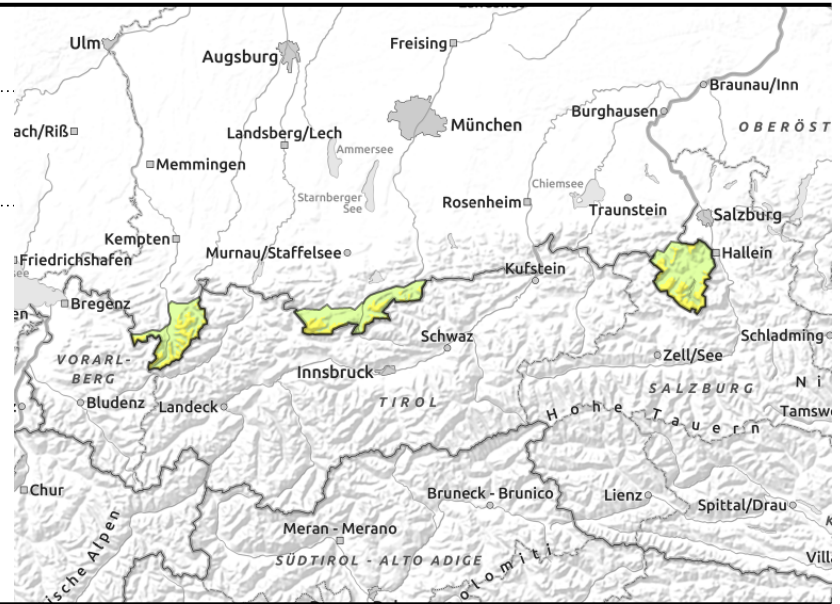
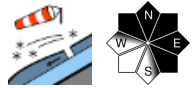


### Expositions



# Avalanche report for **Wednesday, 18.01.2023**

## Allgäuer Hauptkamm, Werdenfelser Alpen, Berchtesgadener Alpen



## Caution: Risk of falling on wind-compressed encrusted snowpack surfaces!

Avalanche danger is moderate above 1800 m; below that altitude it is low. The main problem are snowdrifts. A few avalanche prone locations are found in steep ridgeline terrain in NW-E-SE aspects as well as in wind-loaded gullies and bowls where medium-sized slab avalanches can be triggered by one sole wintersports enthusiast. Size and frequency of avalanche prone locations increase with ascending altitude.

### Snowpack structure

Only insignificant amounts of new snow fell in the western part of the Bavarian Alps during Monday night which cover snowdrift accumulations and make them difficult to detect. During the day, southerly wind became increasingly brisk and generated fresh small-scale snowdrifts in ridgeline terrain which were partly deposited atop surface hoar and are prone to triggering. More insignificant amounts of new snow are forecast for Tuesday night and Wednesday which will be deposited atop surface hoar. At high altitudes weak intermediate layers still persist at transitions from older snowdrift accumulations to old snowpack. The snowpack depths are shallower than usual and strongly wind-impacted. Windward zones are partly blown bare down to the ground; leeward drifted snow accumulates in steep gullies and bowls adjacent to ridgelines.

### Outlook

It will stay chilly and time and again there will be a little snowfall. Avalanche danger levels are not expected to change significantly over the next few days.

#### Avalanche problems



#### Danger ratings

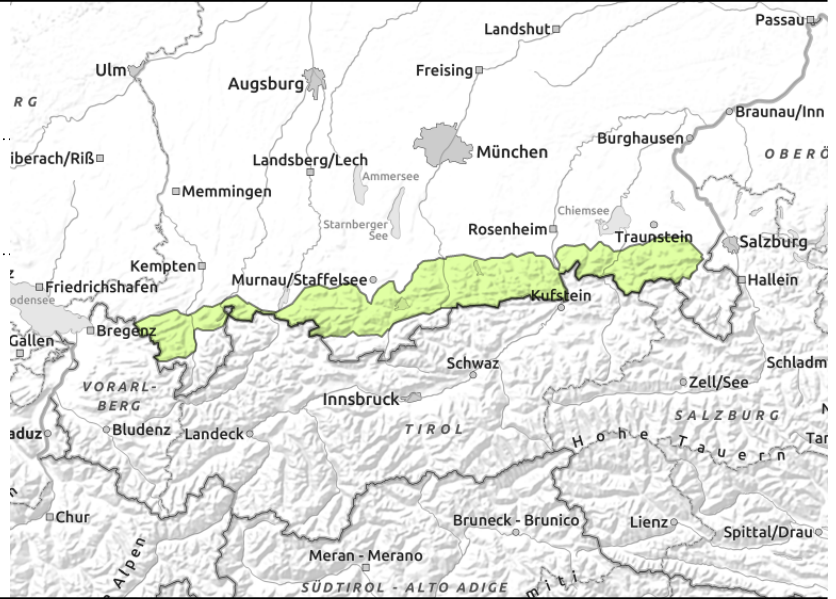
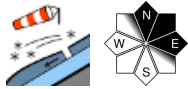


#### Expositions



# Avalanche report for **Wednesday, 18.01.2023**

**Allgäuer Vorberge, Ammergauer Alpen, Bayerische Voralpen West, Bayerische Voralpen Mitte, Bayerische Voralpen Ost, Chiemgauer Alpen West, Chiemgauer Alpen Ost**



## Heed danger of taking a fall on smooth snowpack surfaces in steep terrain.

Avalanche danger is low. The main problem are snowdrifts. Sporadically, small-scale snowdrift accumulations are still triggerable on ridgeline slopes in N/E aspects as well as in wind-loaded gullies and bowls. Avalanches tend to remain small-sized. The risks of taking a fall outweigh those of being buried in snow masses.

### Snowpack structure

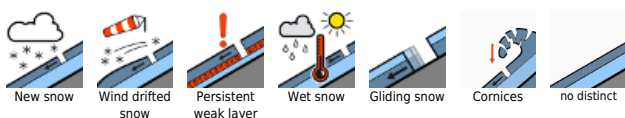
Most of the snow that fell in the last few days was transported; snow depths vary widely; ridges and crests are windblown. Small-scale snowdrift accumulations that are still prone to triggering were generated on leeward summit slopes. Isolated weak intermediate layers still persist in older snowdrift accumulations. There is still only very little snow.

### Outlook

It will stay chilly and time and again there will be a little snowfall. Avalanche danger levels are not expected to change significantly over the next few days.

Translated by Jeffrey McCabe, [www.creativtrans.com](http://www.creativtrans.com)

#### Avalanche problems



#### Danger ratings



#### Expositions

