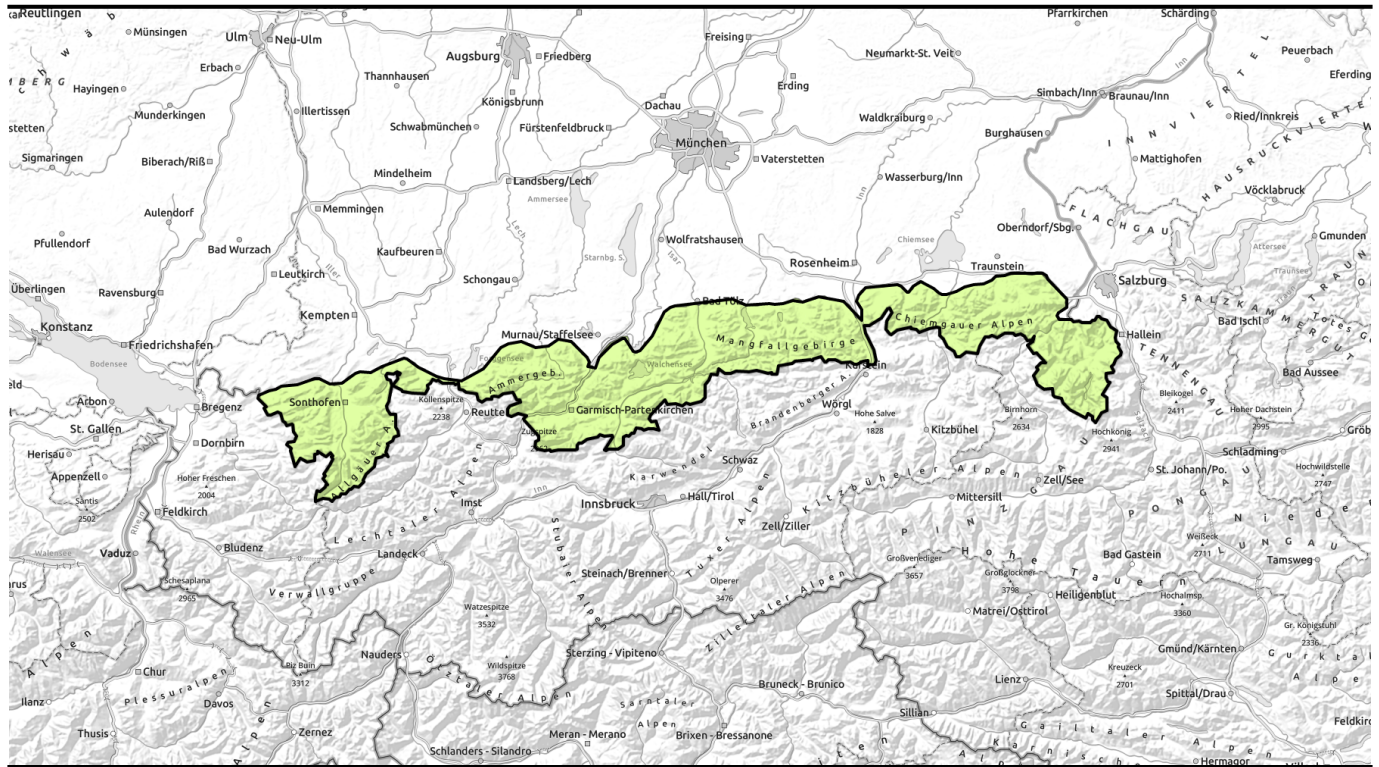


Avalanche report for **Sunday, 08.01.2023**



Not enough snow for backcountry skiing in Bavarian mountains.



Ammergauer Alpen, Bayerische Voralpen West, Bayerische Voralpen Mitte, Bayerische Voralpen Ost, Chiemgauer Alpen Ost, Allgäuer Vorberge, Allgäuer Hauptkamm, Werdenfeller Alpen, Berchtesgadener Alpen



Avalanche problems



Danger ratings

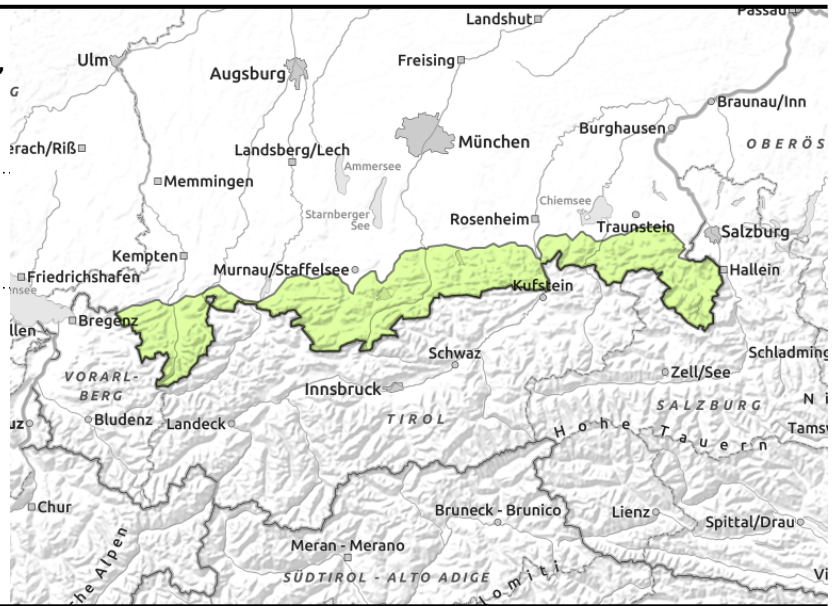
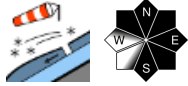


Expositions



Avalanche report for Sunday, 08.01.2023

Ammergauer Alpen, Bayerische Voralpen West, Bayerische Voralpen Mitte, Bayerische Voralpen Ost, Chiemgauer Alpen West, Chiemgauer Alpen Ost, Allgäuer Vorberge, Allgäuer Hauptkamm, Werdenfeller Alpen, Berchtesgadener Alpen



Heed danger of taking a fall when hiking in the mountains because of the icy snowpack surface!

Avalanche danger is low. Isolated small snowdrift accumulations can be found in steep ridgeline terrain in the highest regions of the Bavarian Alps which can be triggered as small slab avalanches even by low additional loading. However, the danger of taking a fall outweighs that of being buried in snow masses.

Snowpack structure

The snowpack has settled well and bears a superficial crust. Small snowdrift accumulations in steep ridgeline terrain at high altitude have partly only bonded poorly with the hard old snowpack surface. Intermediate layers in the old snow consisting of larger crystals are now unlikely to trigger. Only little snow remains at intermediate altitudes; in many places the ground has become utterly bare of snow.

Outlook

A weather change will increase the snowdrift problem again starting from Monday.

Translated by Jeffrey McCabe, www.creativtrans.com

Avalanche problems



Danger ratings



Expositions

