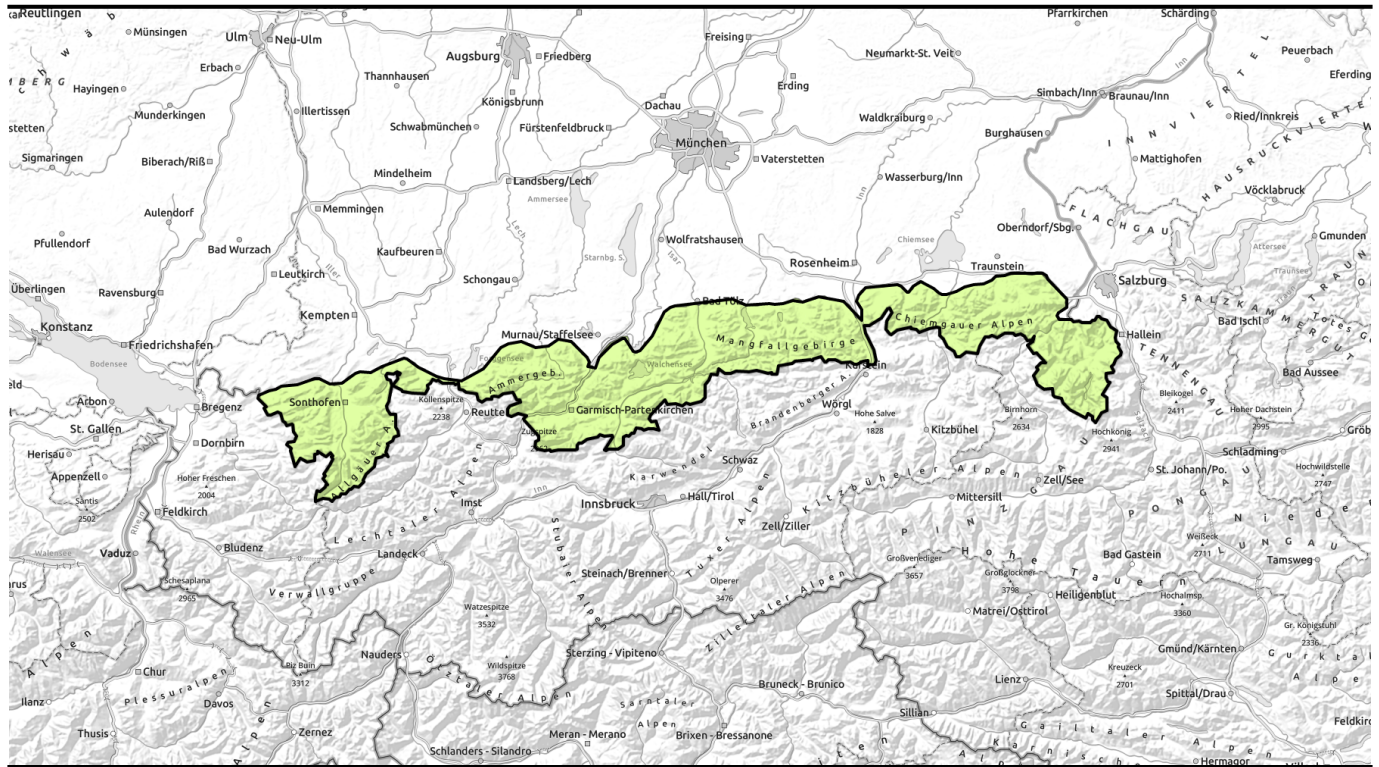


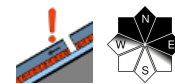
Avalanche report for Monday, 02.01.2023



Danger of taking a fall on hard old snowpack; backcountry skiing almost impossible.



Allgäuer Vorberge, Ammergauer Alpen, Bayerische Voralpen West, Bayerische Voralpen Mitte, Bayerische Voralpen Ost, Chiemgauer Alpen West, Chiemgauer Alpen Ost, Berchtesgadener Alpen, Werdenfelser Alpen, Allgäuer Hauptkamm



Avalanche problems



Danger ratings

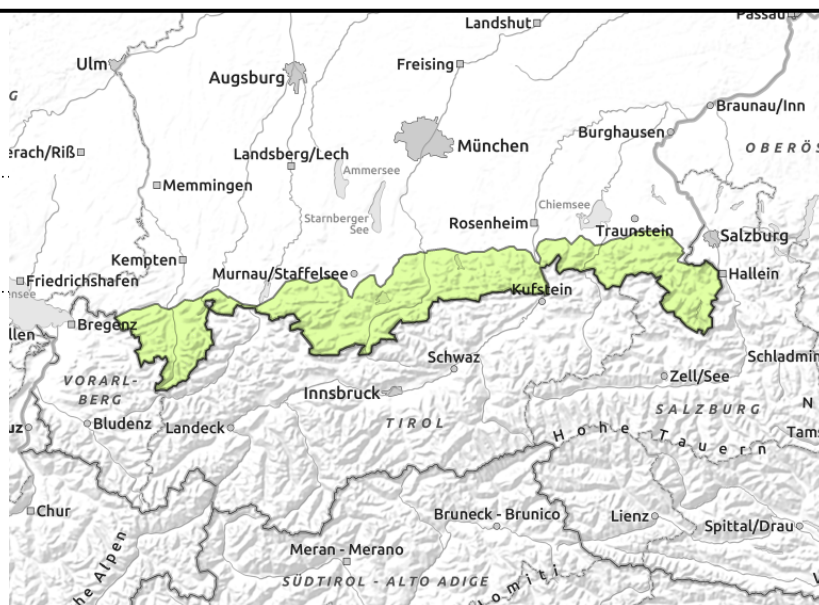
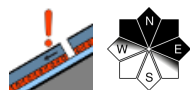


Expositions



Avalanche report for Monday, 02.01.2023

Allgäuer Vorberge, Ammergauer Alpen, Bayerische Voralpen West, Bayerische Voralpen Mitte, Bayerische Voralpen Ost, Chiemgauer Alpen West, Chiemgauer Alpen Ost, Berchtesgadener Alpen, Werdenfelser Alpen, Allgäuer Hauptkamm



Old snow problem at highest altitudes

Avalanche danger is low. At high altitude, weak layers embedded in the old snowpack will be triggered easiest, if at all, by large additional loading and at transitions from deep to shallow snow, e.g., at entries into steep gullies and bowls. Adjacent to ridgelines avalanches can grow to intermediate size on the odd steep north or east facing slope with plenty of snow; otherwise the danger of taking a fall outweighs that of being buried in snow masses.

In addition, isolated glide snow avalanches can release spontaneously on extremely steep grass-covered slopes with still enough snow.

Snowpack structure

By and large the snowpack has settled and stabilized considerably due to the warm temperatures. At high altitude, the snowpack distribution and layering is very heterogeneous. Wind-compacted and encrusted surfaces alternate with soft, moist snow. In some places, weak layers consisting of faceted crystals persist in the old snowpack on shady slopes. However, these are not likely to trigger and it is hard to imagine that fractures will propagate over a large area. The patches of snow remaining at intermediate altitude are mostly encrusted, and in particular in the shade icy. They only melt during the day in sunny zones. Below 1400m the ground has become widespread bare of snow.

Outlook

Avalanche danger will remain low.

Translated by Jeffrey McCabe, www.creativtrans.com

Avalanche problems



Danger ratings



Expositions

