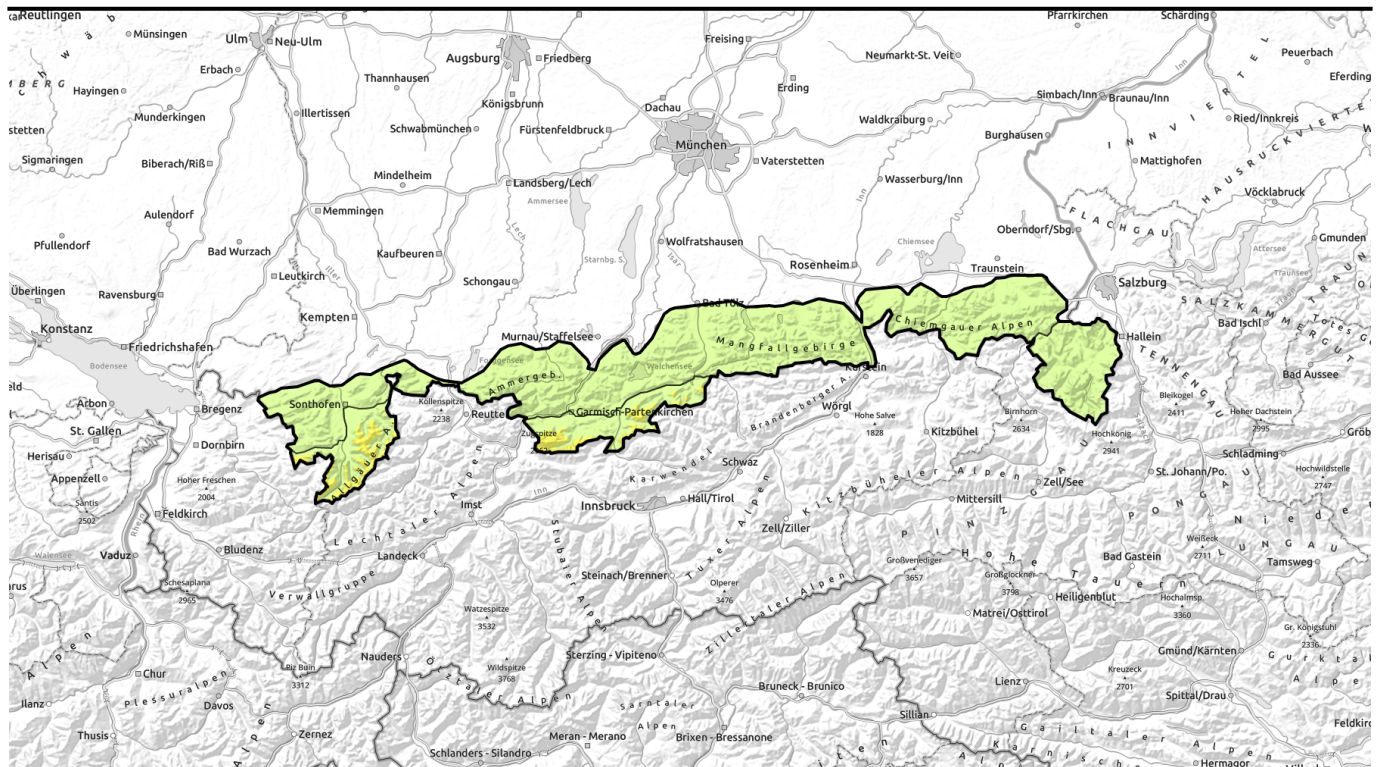




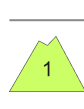



Avalanche report for Friday, 30.12.2022



Heed snowdrifts above 2200 m

	2200 m	Werdenfeller Alpen, Allgäuer Hauptkamm	
		Allgäuer Vorberge, Ammergauer Alpen, Bayerische Voralpen West, Bayerische Voralpen Mitte, Bayerische Voralpen Ost, Chiemgauer Alpen West, Chiemgauer Alpen Ost	
		Berchtesgadener Alpen	

Avalanche problems



Danger ratings



Expositions

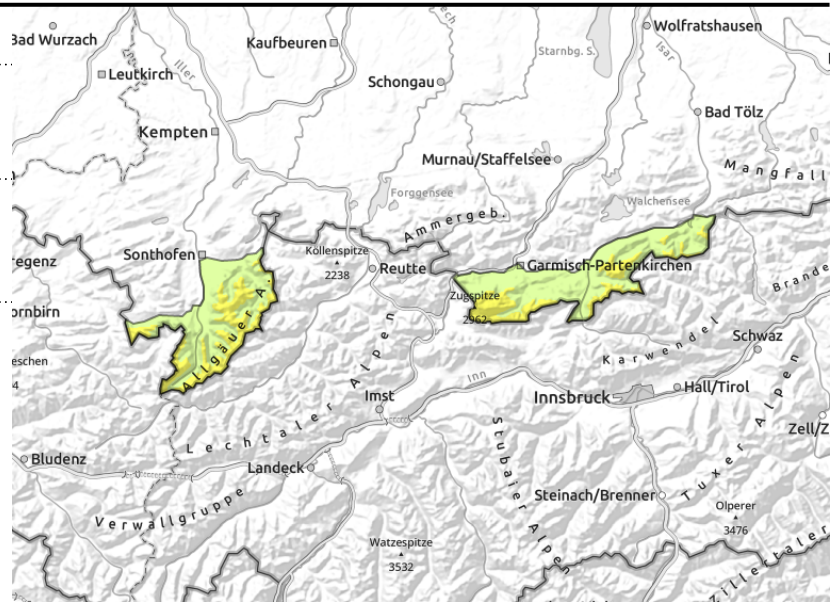
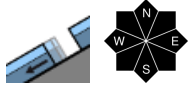
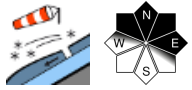


Avalanche report for Friday, 30.12.2022

Werdenfeller Alpen, Allgäuer Hauptkamm



2200 m



Snowdrifts above 2200 m still prone to triggering

Avalanche danger above 2200 m is moderate, below that altitude danger is low. Main problem: snowdrifts. Fresh and older snowdrift accumulations at high altitude can be triggered as medium-sized slab avalanches, in particular by large additional loading. Avalanche prone locations are found mostly in steep ridgeline terrain in N/E aspects as well as in wind-loaded gullies and bowls. Frequency and size of the danger zones increase with ascending altitude.

In addition, glide-snow avalanches (medium-size) can trigger naturally on steep slopes with smooth ground where they have not yet been discharged.

Snowpack structure

Snowdrifts can be deposited by Friday afternoon at higher altitudes due to some fresh snow and increasingly brisk westerly winds. These will settle and consolidate due to the mild weather but will sometimes still be prone to triggering, especially on shady leeward slopes. At high altitude the snowpack surface is frequently hard and shows strong wind impact. Isolated deeply embedded weak layers are also still found at high altitude in areas with plenty of snow. At intermediate altitudes the old snow is moist all the way down to the ground. There is little snow on the ground.

Outlook

Until Friday the avalanche danger will not change significantly.

Avalanche problems



Danger ratings

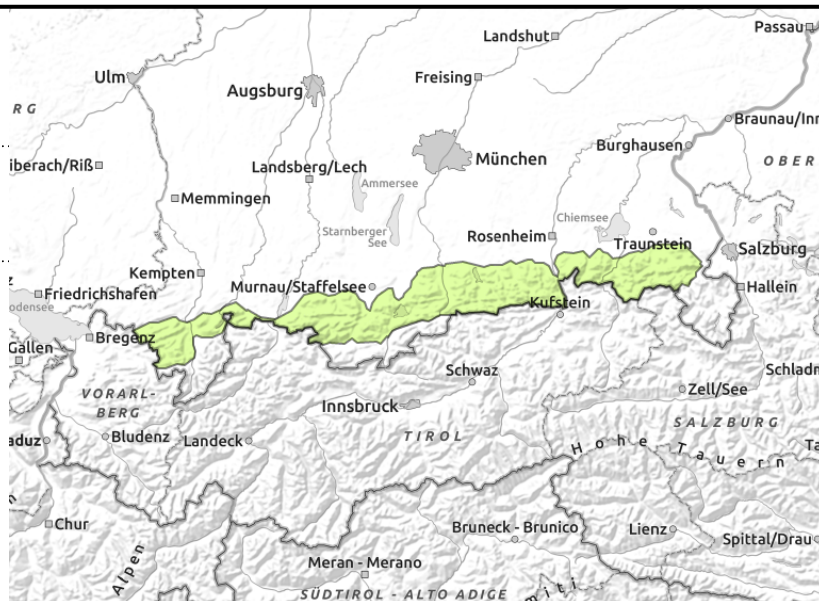
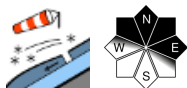


Expositions



Avalanche report for Friday, 30.12.2022

Allgäuer Vorberge, Ammergauer Alpen, Bayerische Voralpen West, Bayerische Voralpen Mitte, Bayerische Voralpen Ost, Chiemgauer Alpen West, Chiemgauer Alpen Ost



Danger of taking a fall because of isolated snowdrift patches in steep ridgeline terrain

Avalanche danger is low. On N/E facing summit zone slopes, there are in places small snowdrift accumulations which are prone to triggering. Danger of falling outweighs that of being buried in snow masses.

Snowpack structure

Small snowdrift patches have been generated at highest altitudes. These can be triggered in some places, but are bonding more and more due to mild temperatures. At intermediate altitudes a few centimeters of the snowfall from the beginning of the week were deposited on the patchy old snowpack or directly on the bare ground. In many places the snowpack has somewhat consolidated in the morning and is moist down to the ground. There is little snow on the ground.

Outlook

Until Friday the avalanche danger will not change significantly.

Avalanche problems



Danger ratings

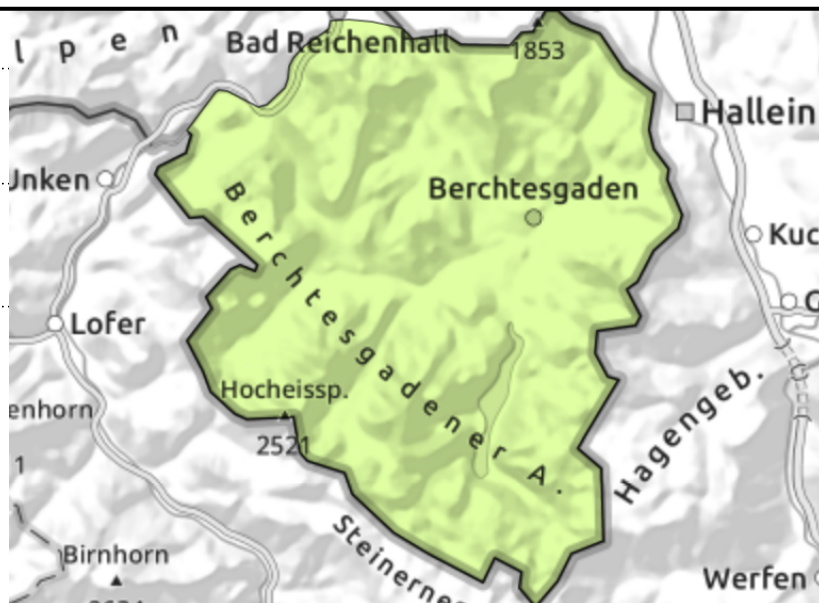
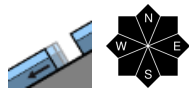
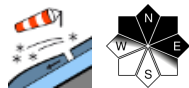


Expositions



Avalanche report for Friday, 30.12.2022

Berchtesgadener Alpen



Small snowdrifts at high altitudes are occasionally prone to triggering

Avalanche danger is low. In isolated cases, snowdrift accumulations can be triggered in particular by large additional loading. Above 2200 m they can grow to medium size. The few avalanche prone locations occur on steep N/E ridgeline slopes as well as in wind-loaded gullies and bowls. In addition, small glide-snow avalanches can trigger naturally on very steep grass-covered slopes.

Snowpack structure

Small snowdrift accumulations that were generated at high altitude have generally settled and consolidated well due to the mild weather. With ascending altitude (MSL) they can trigger in isolated cases. More deeply embedded weak layers in zones where snowfall has been heavy are now unlikely to trigger. At intermediate altitudes the old snow is moist all the way down to the ground. There is little snow on the ground.

Outlook

Until Friday the avalanche danger will not change significantly.

Translated by Jeffrey McCabe, www.creativtrans.com

Avalanche problems



Danger ratings



Expositions

