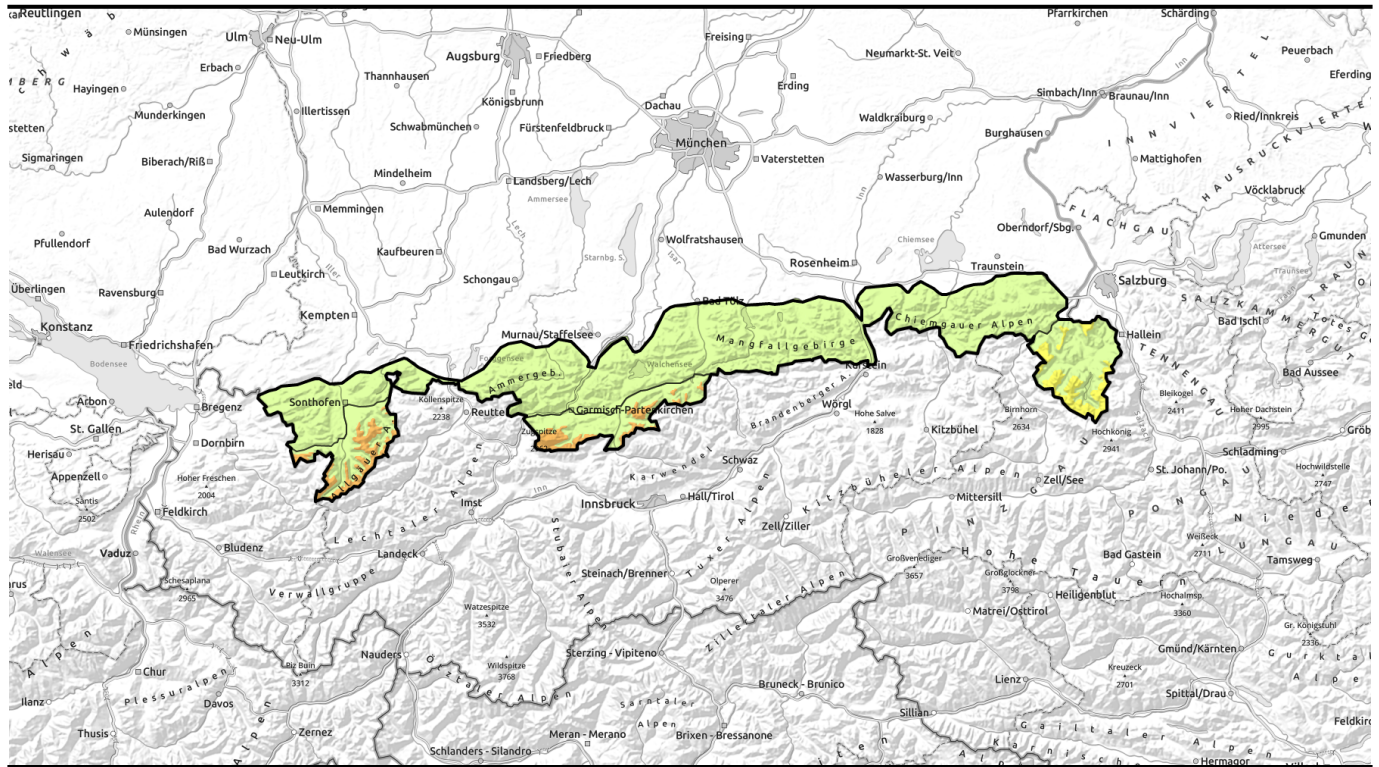



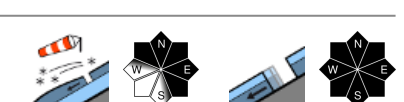




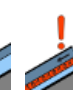









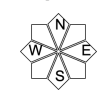


Avalanche report for **Tuesday, 27.12.2022**



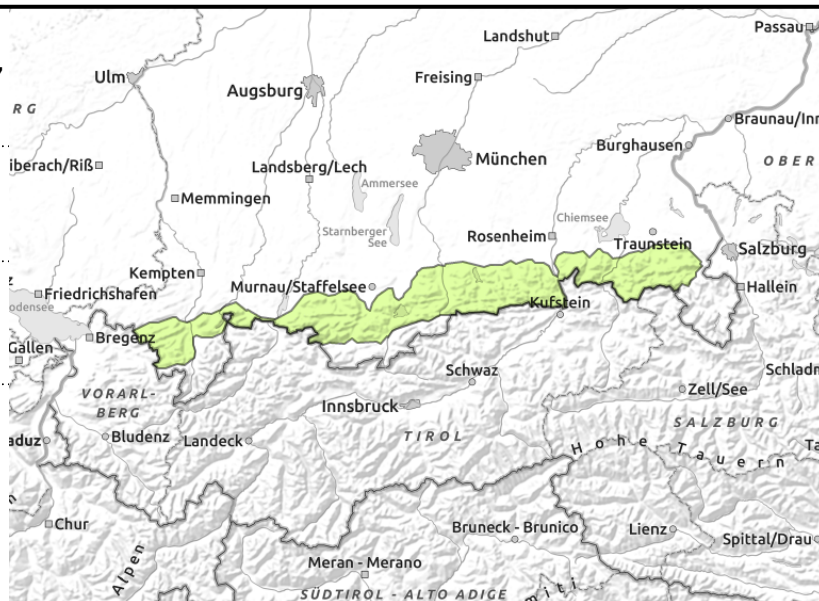
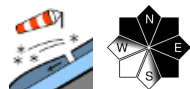
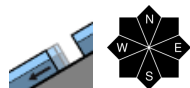
UPDATE: some fresh snow and wind also at high altitude in **Werdenfels**

	Ammergauer Alpen, Bayerische Voralpen West, Bayerische Voralpen Mitte, Bayerische Voralpen Ost, Chiemgauer Alpen West, Chiemgauer Alpen Ost, Allgäuer Vorberge	
	Berchtesgadener Alpen	
	Allgäuer Hauptkamm, Werdenfelsen Alpen	

Avalanche problems  New snow  Wind drifted snow  Persistent weak layer  Wet snow  Gliding snow  Cornices  No problem	Danger ratings  1 low  2 moderate  3 considerable  4 high  5 very high	Expositions 
---	--	---

Avalanche report for Tuesday, 27.12.2022

Ammergauer Alpen, Bayerische Voralpen West, Bayerische Voralpen Mitte, Bayerische Voralpen Ost, Chiemgauer Alpen West, Chiemgauer Alpen Ost, Allgäuer Vorberge



Hardly any snow beneath 1800 m

Avalanche danger is low. On steep slopes which have not yet discharged, small wet loose-snow and glide-snow avalanches can trigger naturally.

In NW/E/SE aspects in summit zones, the snowdrift accumulations are prone to triggering.

Snowpack structure

After the snowfall level descended on Monday night (focal point: Ammergau and Allgau Alps) a few cm of fresh snow is expected amid strong winds which will transport it. Snowdrifts can be prone to triggering. Elsewhere the snow will often fall on bare ground. Where there is old snow it is often wet down to the ground.

Outlook

Avalanche danger will remain low.

Avalanche problems



Danger ratings

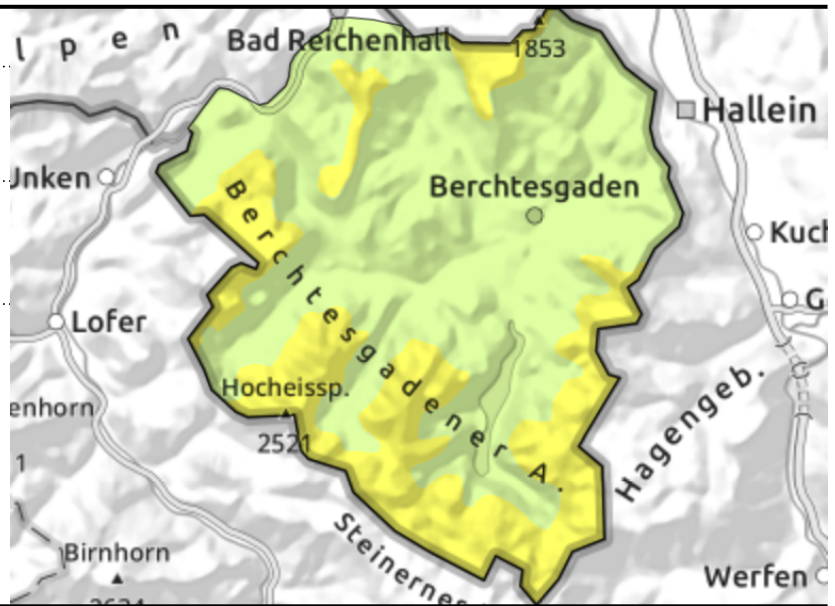
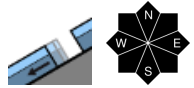
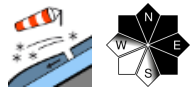


Expositions



Avalanche report for **Tuesday, 27.12.2022**

Berchtesgadener Alpen



Snowdrifts at high altitudes are often prone to triggering

Avalanche danger above 2000 m is moderate, below that altitude danger is low. Main problem: snowdrifts. Fresh and older snowdrift masses can be triggered even by minimum additional loading at high altitudes. Avalanche prone locations are found mostly in steep ridgeline terrain in NW/E/SE aspects and in wind-loaded gullies and bowls. Frequency and size of the danger zones increase with ascending altitude.

In addition, glide-snow avalanches (medium-size) can trigger naturally on steep slopes with smooth ground where they have not yet been discharged.

Snowpack structure

On Monday night, rainfall down to intermediate altitudes, a bit of fresh snow at high altitude, amid strong wind. Bonding of old and drifted snow is often prone to triggering. More deeply embedded layers which are weak occur at high altitudes where snowfall has been heavy. The old snowpack is moist to thoroughly wet, can glide away over smooth ground. At intermediate altitudes there is often little snow.

Outlook

Decrease in avalanche danger as precipitation slackens off and temperatures drop.

Avalanche problems



Danger ratings

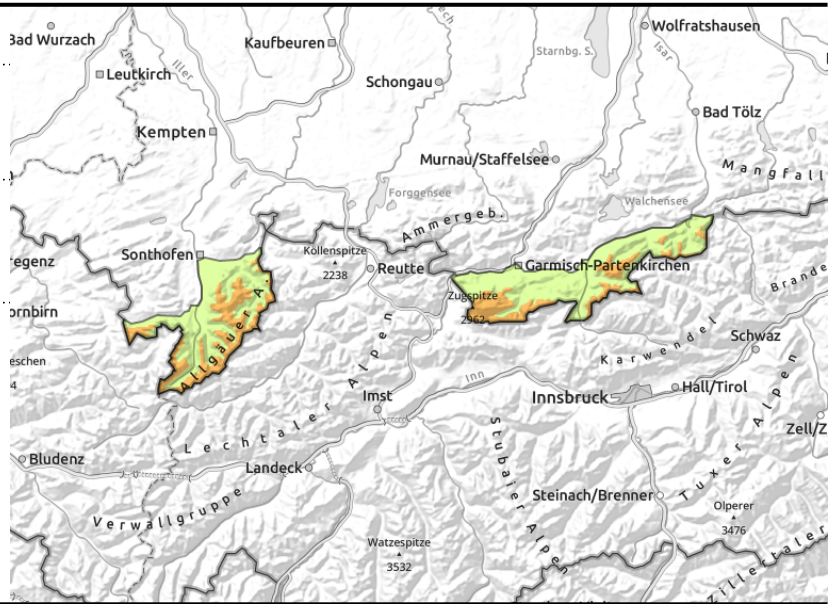
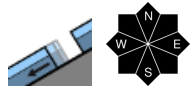
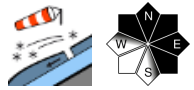
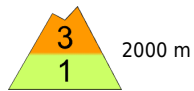


Expositions



Avalanche report for Tuesday, 27.12.2022

Allgäuer Hauptkamm, Werdenföser Alpen



Caution: fresh and older snowdrifts at high altitudes

Avalanche danger above 1800 m is considerable, danger below that altitude is low. Main problem: snowdrifts. Fresh and older snowdrift masses can be triggered even by minimum additional loading at high altitudes. Avalanche prone locations are found mostly in steep ridgeline terrain in NW/E/SE aspects and in wind-loaded gullies and bowls. Frequency and size of the danger zones increase with ascending altitude.

In addition, glide-snow avalanches (medium-size) can trigger naturally on steep slopes with smooth ground where they have not yet been discharged.

Snowpack structure

On Monday night, rainfall down to intermediate altitudes, a bit of fresh snow at high altitude, amid strong wind. Bonding of old and drifted snow is often prone to triggering. More deeply embedded layers which are weak occur at high altitudes where snowfall has been heavy. The old snowpack is moist to thoroughly wet, can glide away over smooth ground. At intermediate altitudes there is often little snow.

Outlook

Decrease in avalanche danger as precipitation slackens off and temperatures drop.

Translated by Jeffrey McCabe, www.creativtrans.com

Avalanche problems



Danger ratings



Expositions

