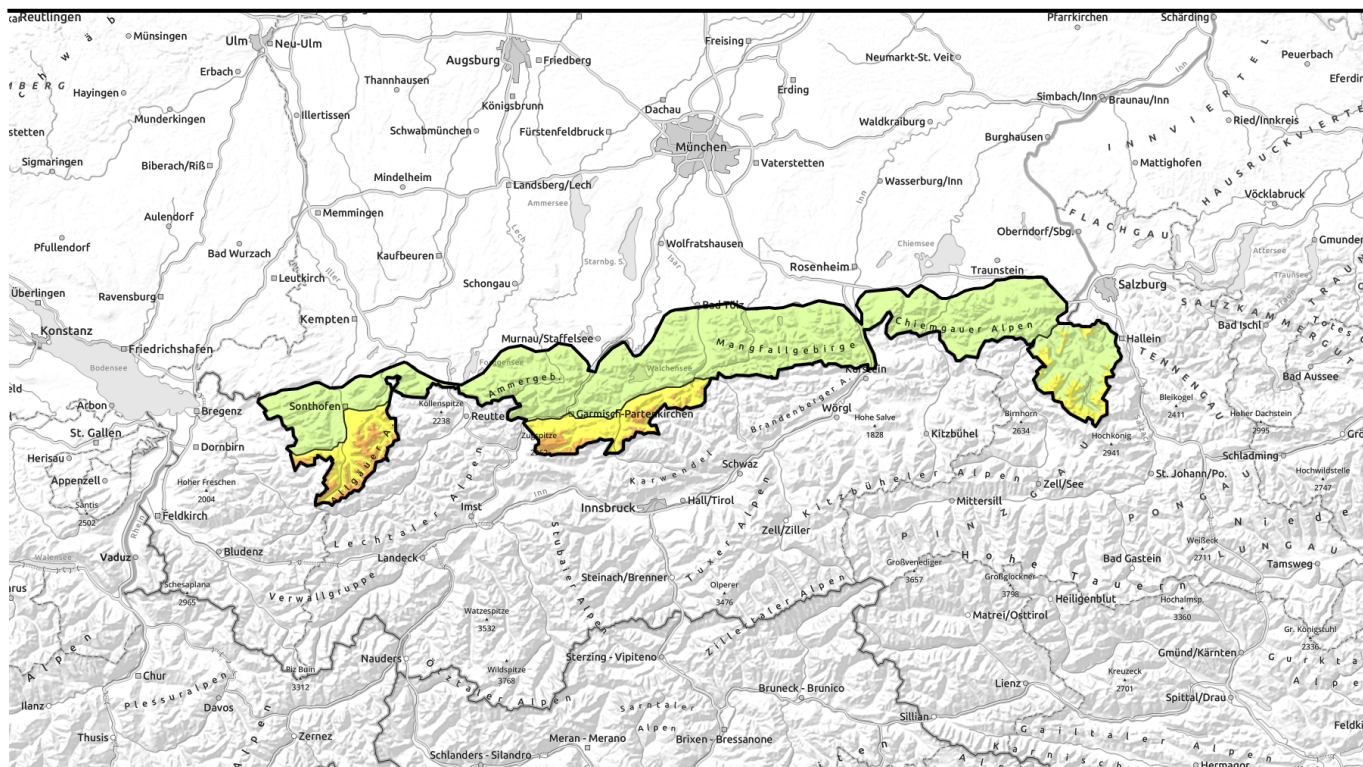








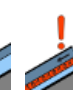




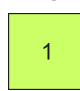
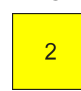



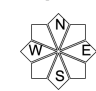


Avalanche report for Saturday, 24.12.2022



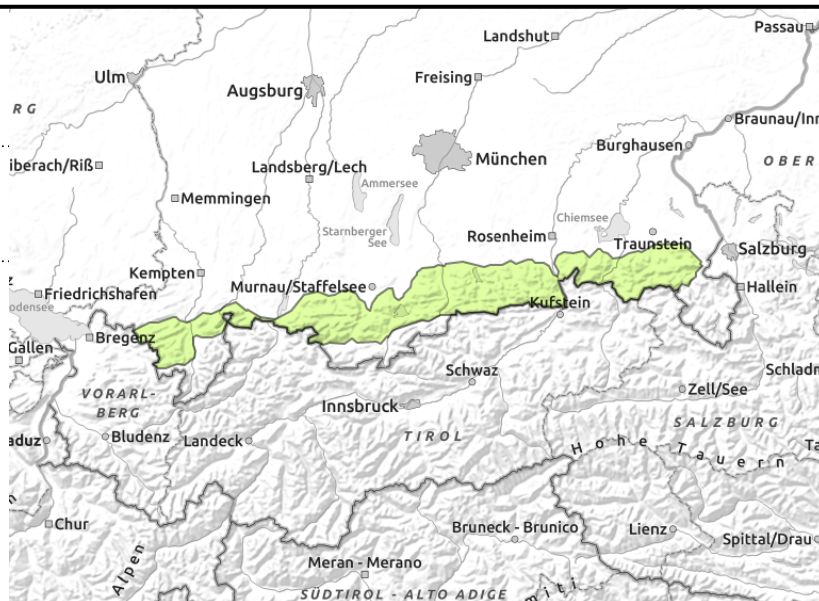
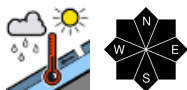
Plenty of rain. At high altitudes locally up to 50cm new snow accompanied by stormy wind.

| | | |
|---|--|---|
|  | Allgäuer Vorberge, Ammergauer Alpen, Bayerische Voralpen West, Bayerische Voralpen Mitte, Bayerische Voralpen Ost, Chiemgauer Alpen West, Chiemgauer Alpen Ost |  |
|  | 2200 m Werdenfelser Alpen, Allgäuer Hauptkamm |  |
|  | 1800 m Berchtesgadener Alpen |  |

| | | |
|---|--|---|
| Avalanche problems  New snow  Wind drifted snow  Persistent weak layer  Wet snow  Gliding snow  Cornices  No problem | Danger ratings  1 low  2 moderate  3 considerable  4 high  5 very high | Expositions  |
|---|--|---|

Avalanche report for Saturday, 24.12.2022

Allgäuer Vorberge, Ammergauer Alpen, Bayerische Voralpen West, Bayerische Voralpen Mitte, Bayerische Voralpen Ost, Chiemgauer Alpen West, Chiemgauer Alpen Ost



As a consequence of the rainfall the snowpack in the Bavarian Prealps diminishes noticeably.

Avalanche danger is low. Small, wet loose snow and glide snow avalanches can trigger naturally on steep slopes that have not yet discharged.

Snowpack structure

The snowpack has become thoroughly wet far up into intermediate altitudes. The ground is becoming increasingly bare. Close to the summits a few centimeters of new snow will fall during Friday night.

Outlook

Avalanche danger will remain low.

Avalanche problems



Danger ratings

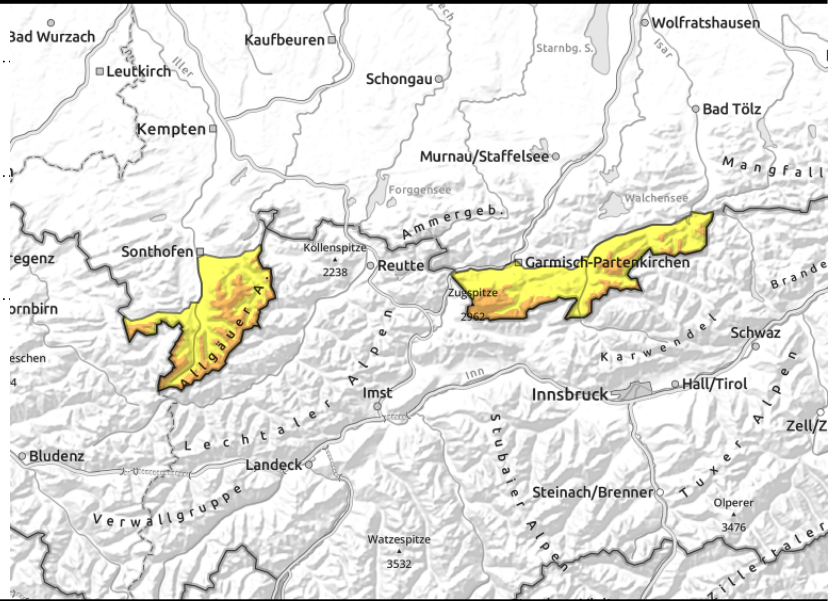
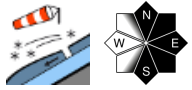
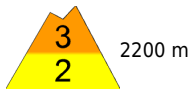


Expositions



Avalanche report for **Saturday, 24.12.2022**

Werdenfeller Alpen, Allgäuer Hauptkamm



Extensive snowdrift accumulations higher up in the mountains!

Avalanche danger above 2200m is considerable, danger below that altitude is moderate. The main problem at high altitude are fresh snowdrift accumulations. Avalanche prone locations are found in steep terrain adjacent to and distant from ridges in N/E/S aspects as well as in wind-loaded gullies and bowls. In places, slab avalanches can be triggered even by low additional loading such as by a single skier; they can grow to large size. Size and frequency of avalanche prone locations increase with ascending altitude.

In addition, small and medium-sized wet loose snow avalanches can release spontaneously in extremely steep intermediate altitude terrain with still sufficient snow. Glide snow avalanches still possible on steep smooth grass-covered slopes. - Glide cracks are indicators of imminent danger! Below 1800m only small avalanches are expected due to the shallow snowpack.

Snowpack structure

Stormy westerly winds and simultaneously persistent, frequently heavy, snowfall, generate extensive snowdrift accumulations. These bond only poorly with the partly melt-freeze encrusted or icy old snowpack surface. At high altitude, faceted intermediate layers are embedded in the old snowpack. At intermediate altitudes the snowpack is largely wet; the water accumulates at the ground. At lower altitudes the ground is becoming increasingly bare.

Outlook

Due to the forecast calmer weather and mild temperatures the danger of dry avalanches at high altitude will recede. Then wet snow will become the predominant problem again.

Avalanche problems



Danger ratings

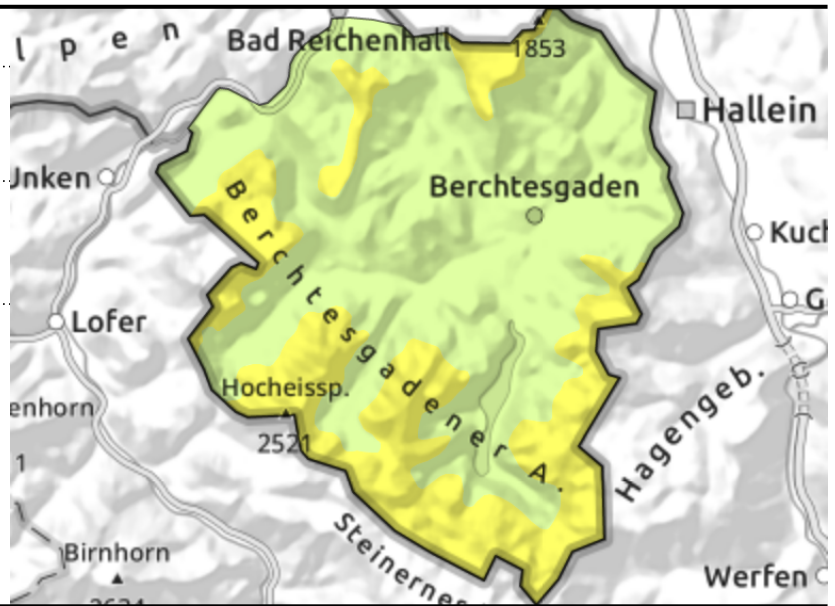
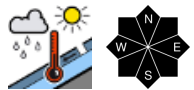
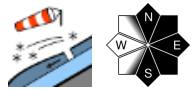


Expositions



Avalanche report for **Saturday, 24.12.2022**

Berchtesgadener Alpen



Snowdrift accumulations higher up in the mountains are prone to triggering!

The avalanche danger is moderate above 1800m; below that altitude it is low. The main problem at high altitude are fresh snowdrift accumulations. Avalanche prone locations are found in steep terrain adjacent to and distant from ridges in N/E/S aspects as well as in wind-loaded gullies and bowls. In places, slab avalanches can be triggered even by low additional loading such as by a single skier; they can grow to medium size. Size and frequency of avalanche prone locations increase with ascending altitude.

In addition, loose snow avalanches can release spontaneously in extremely steep terrain with sufficient snow. Glide snow avalanches are in addition still possible on steep smooth grass-covered slopes. Below 1800m only small avalanches are expected since the snowpack is so shallow.

Snowpack structure

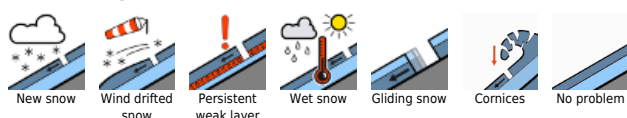
At high altitudes stormy westerly wind continues to generate fresh snowdrift accumulations. These bond only poorly with the partly melt-freeze encrusted or icy old snowpack surface. At high altitude, faceted intermediate layers are embedded in the old snowpack. At intermediate altitudes the snowpack is largely wet; the water accumulates at the ground. At lower altitudes the ground is becoming increasingly bare.

Outlook

Due to the forecast calmer weather and mild temperatures the danger of dry avalanches at high altitude will recede. Then wet snow will become the predominant problem again.

Translated by Jeffrey McCabe, www.creativtrans.com

Avalanche problems



Danger ratings



Expositions

