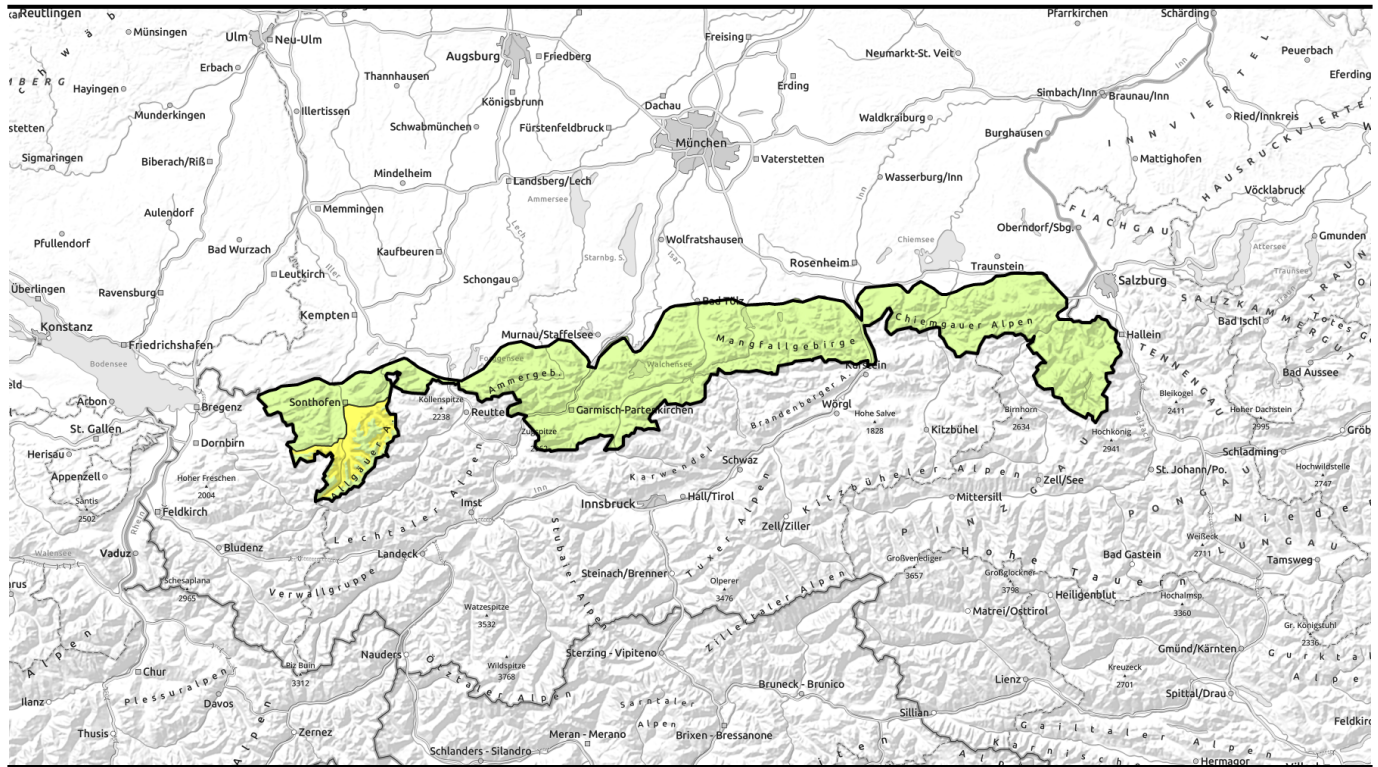
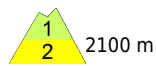


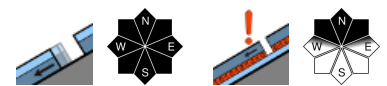
Avalanche report for Thursday, 22.12.2022



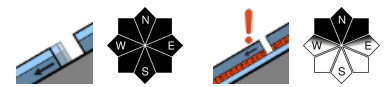
Still possibility of glide snow avalanches on steep grass-covered high altitude slopes



Allgäuer Hauptkamm



Allgäuer Vorberge, Ammergauer Alpen, Werdenfeller Alpen, Bayerische Voralpen West, Bayerische Voralpen Mitte, Bayerische Voralpen Ost, Chiemgauer Alpen West, Chiemgauer Alpen Ost, Berchtesgadener Alpen



Avalanche problems



Danger ratings



Expositions

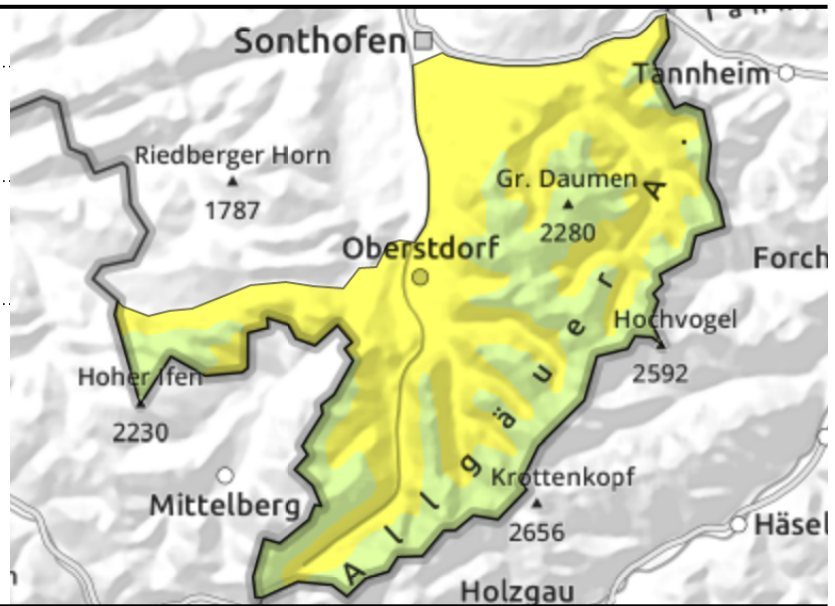
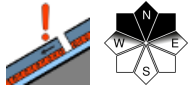
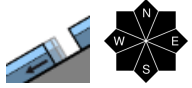


Avalanche report for Thursday, 22.12.2022

Allgäuer Hauptkamm



2100 m



Avoid terrain below fractures and glide cracks in the snowpack

Avalanche danger is moderate below 2100 m, above that altitude danger is low. Mostly small, in isolated cases also medium-sized, glide snow avalanches can trigger spontaneously on steep smooth grass-covered slopes at any time. Below 1600 m, only small avalanches are expected due to the shallowness of the snowpack.

On shady high altitude slopes isolated weak layers still persist in the old snow in areas covered by wind transported snow and gullies and bowls with ample snow. These can in places still be triggered by large additional loading. Avalanches are small, in isolated cases medium-sized.

Snowpack structure

The below average snow depth is moist from the top to the ground, where a prominent wet glide snow layer has formed. Gliding movements of the snow masses are promoted. In south aspects the ground has become increasingly bare down to intermediate altitudes. All in all the snow has settled well as a consequence of the warming and the layers in the snowpack have bonded. Only in the old snowpack at high altitude have weak layers consisting of faceted crystals persisted in patches.

Outlook

Avalanche danger levels are not expected to change significantly over the next few days.

Avalanche problems



Danger ratings

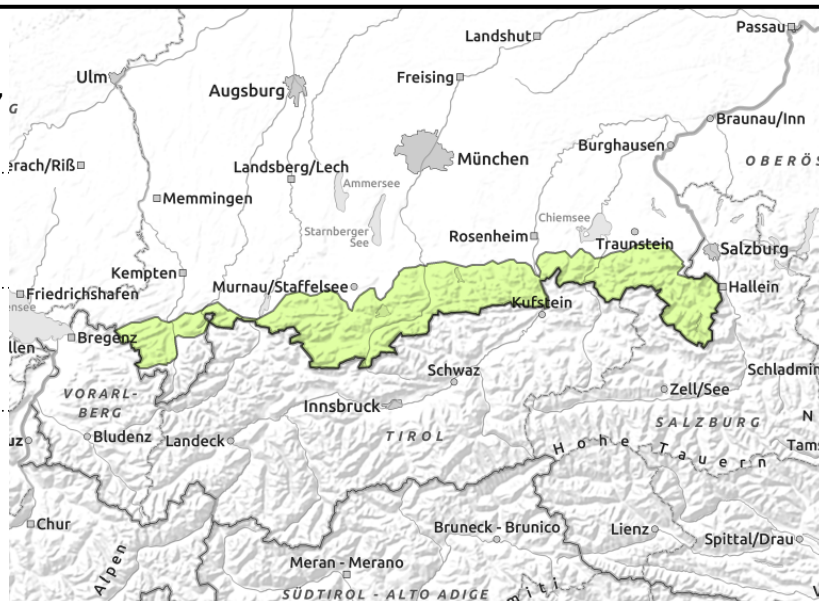
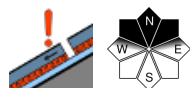
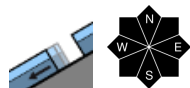


Expositions



Avalanche report for Thursday, 22.12.2022

Allgäuer Vorberge, Ammergauer Alpen,
Werdenfelser Alpen, Bayerische Voralpen West,
Bayerische Voralpen Mitte, Bayerische Voralpen Ost,
Chiemgauer Alpen West, Chiemgauer Alpen Ost,
Berchtesgadener Alpen



Heed small glide snow avalanches on steep slopes that have not yet discharged

Avalanche danger is generally low. Small glide snow avalanches can trigger naturally on steep, smooth grass-covered slopes that have not yet discharged.

On shady high altitude slopes isolated weak layers still persist in the old snow in areas covered by wind transported snow and gullies and bowls with ample snow. In places these are still triggerable by large additional loading. Avalanches are small, in isolated cases medium-sized.

Snowpack structure

The old snowpack depth is below average and is moist down to the ground, where a prominent wet glide snow layer has formed. Gliding movements of the snow masses are promoted. In south aspects the ground has become increasingly bare down to intermediate altitudes. The snow has settled well as a consequence of the warming and the layers in the snowpack are bonding increasingly.

Outlook

Avalanche danger levels are not expected to change significantly over the next few days.

Translated by Jeffrey McCabe, www.creativtrans.com

Avalanche problems



Danger ratings



Expositions

