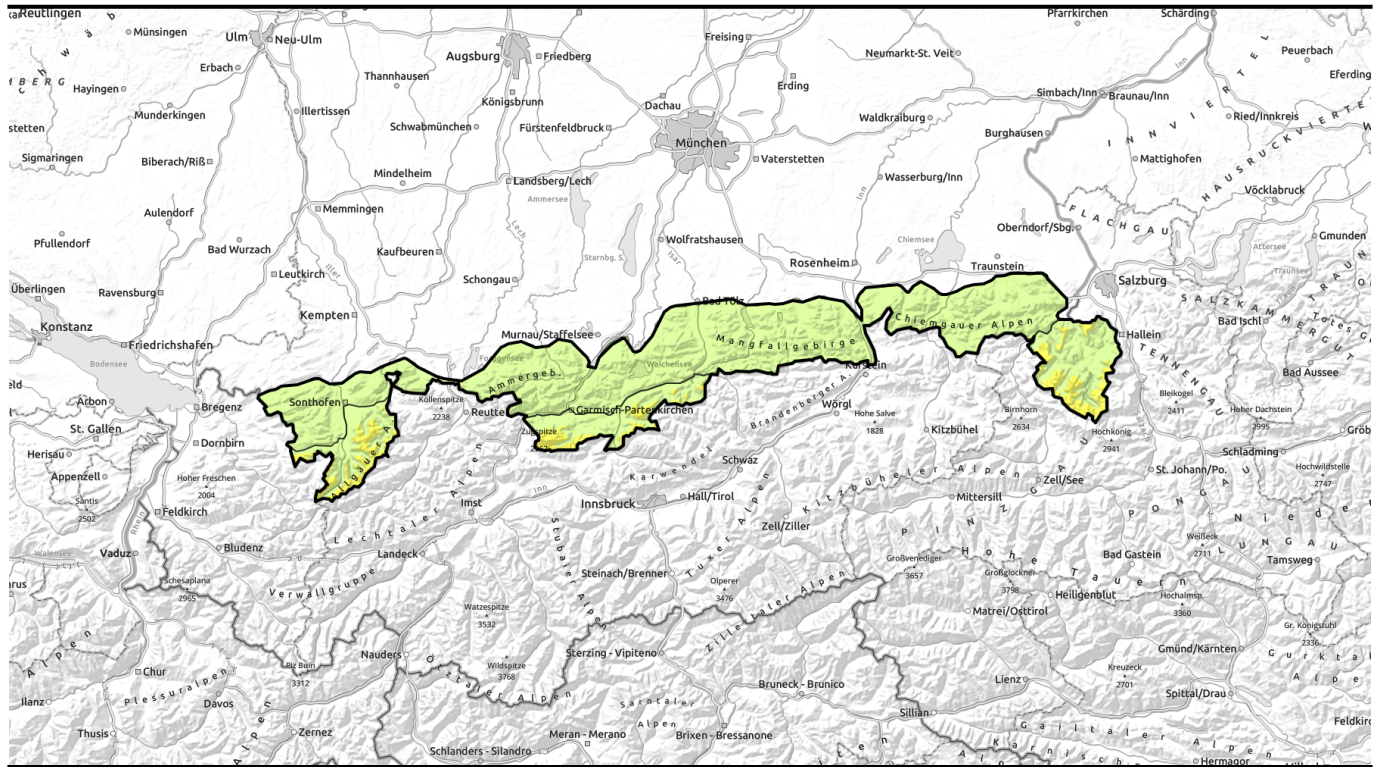


Avalanche report for Wednesday, 21.12.2022



Isolated avalanche prone locations in old snow at higher altitude Wet snow problem at low and intermediate altitudes.



2000 m

Allgäuer Hauptkamm, Werdenfelser Alpen, Berchtesgadener Alpen



Allgäuer Vorberge, Ammergauer Alpen, Bayerische Voralpen West, Bayerische Voralpen Mitte, Bayerische Voralpen Ost, Chiemgauer Alpen West, Chiemgauer Alpen Ost



Avalanche problems



Danger ratings

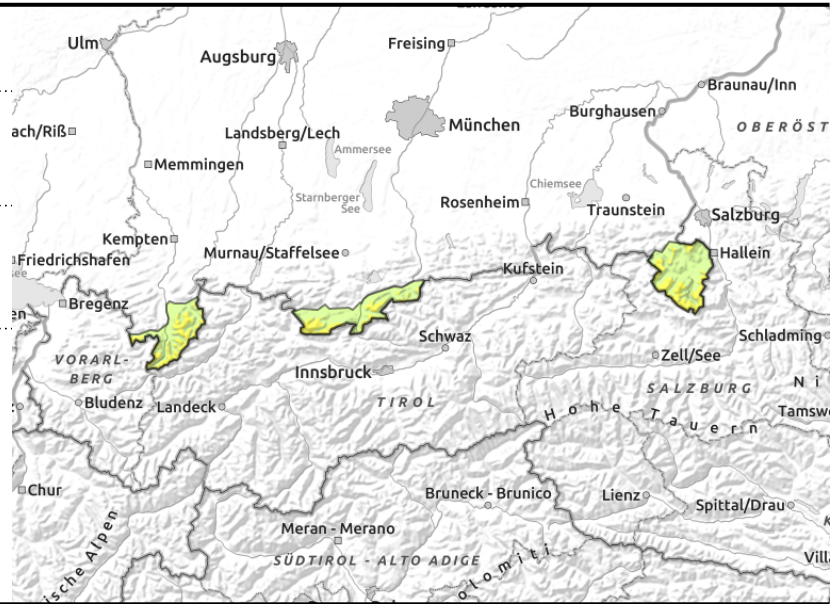
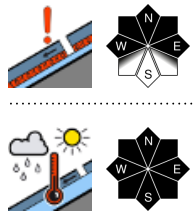


Expositions



Avalanche report for **Wednesday, 21.12.2022**

Allgäuer Hauptkamm, Werdenfelser Alpen, Berchtesgadener Alpen



Possibility of isolated avalanches in old snow and glide snow.

Avalanche danger is moderate above 2000 m, below that altitude danger is low. Above 1800 m isolated weak layers are embedded in the old snowpack in areas covered by wind transported snow and in gullies and bowls with ample snow. They can partly be triggered by one single person. Avalanches are small, in isolated cases medium-sized. Frequency and size of the danger zones increase with ascending altitude.

Small wet loose snow avalanches possible in steep rocky terrain. In addition, small, up to higher altitudes also isolated medium-sized, glide snow avalanches can trigger naturally on steep smooth grass-covered slopes.

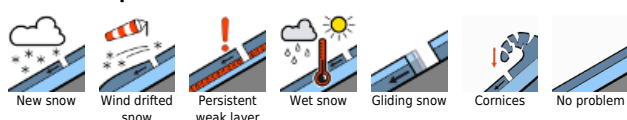
Snowpack structure

Due to mild temperatures the shallow snowpack moistens from the top and forfeits its firmness. Gliding movements of the snow masses are promoted. In south aspects the ground is becoming bare again at low and intermediate altitudes. As a consequence of warming, the layers within the snowpack bonded increasingly. Only in the old snowpack at higher altitudes have some weak layers consisting of faceted crystals persisted.

Outlook

By Thursday, the snowpack will have further stabilized.

Avalanche problems



Danger ratings

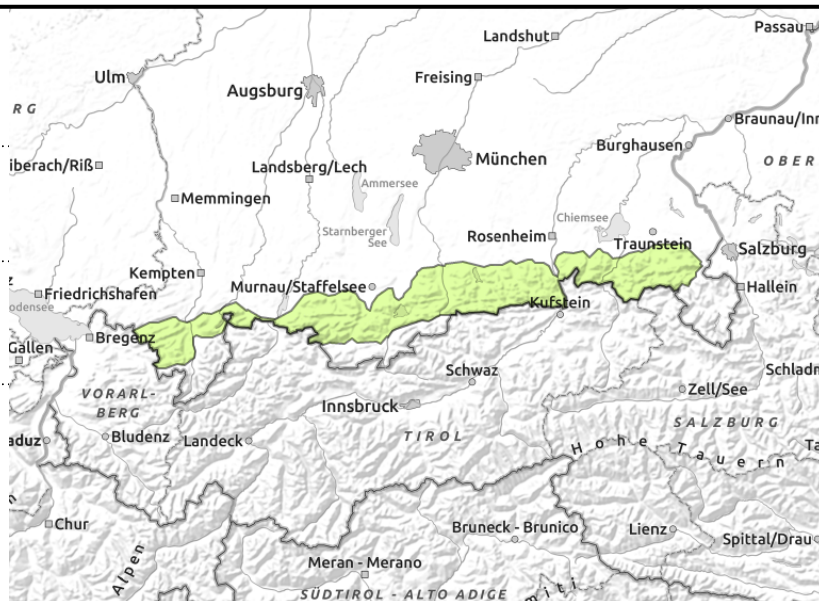
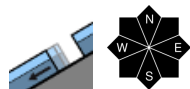
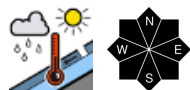


Expositions



Avalanche report for **Wednesday, 21.12.2022**

Allgäuer Vorberge, Ammergauer Alpen, Bayerische Voralpen West, Bayerische Voralpen Mitte, Bayerische Voralpen Ost, Chiemgauer Alpen West, Chiemgauer Alpen Ost



Minor glide snow avalanches and sluffing possible.

Avalanche danger is low. Small wet loose snow avalanches possible in steep rocky terrain. In addition, small glide snow avalanches can trigger naturally on steep smooth grass-covered slopes. At high altitude, in isolated cases small slabs are triggerable in the old snowpack by large additional loading

Snowpack structure

Due to mild temperatures the shallow snowpack has become moist from the top and forfeits its firmness. Gliding movements of the snow masses are promoted. In south aspects the ground has started to become bare again. As a consequence of the warming the layers within the snowpack have bonded well; even the weak layers embedded in the old snowpack are stabilizing increasingly.

Outlook

Avalanche danger changes little.

Translated by Jeffrey McCabe, www.creativtrans.com

Avalanche problems



Danger ratings



Expositions

