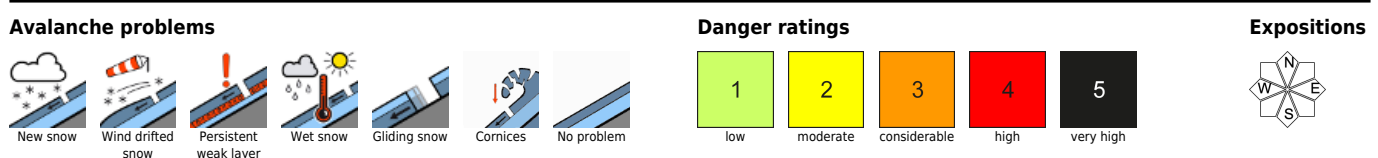
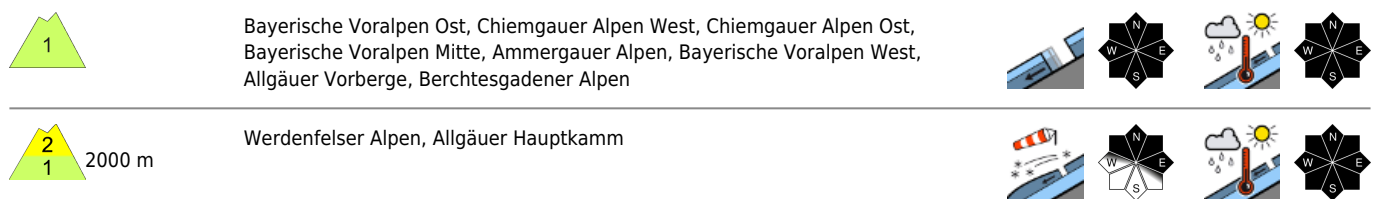
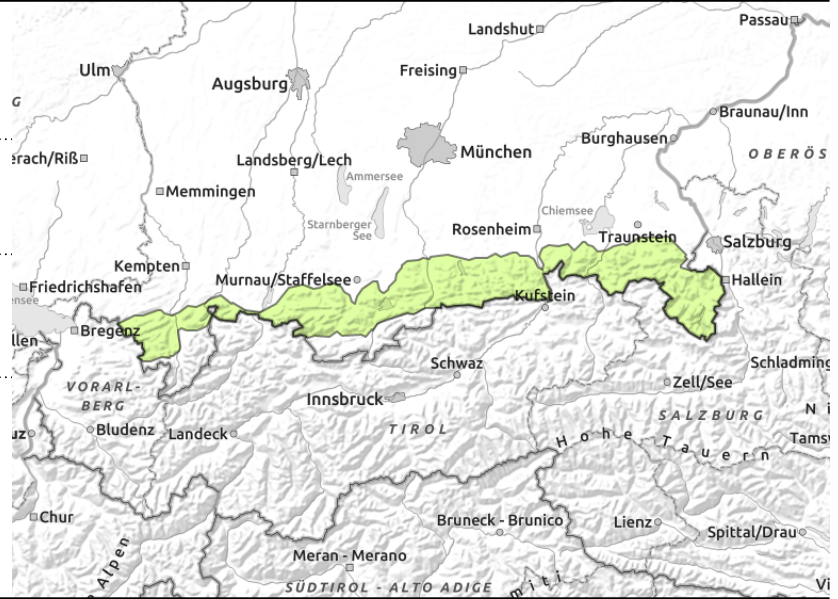
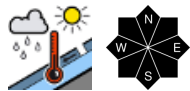
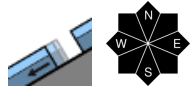


SW air current bringing snowdrifts and higher temperatures



Monday, 19.12.2022

Bayerische Voralpen Ost, Chiemgauer Alpen West, Chiemgauer Alpen Ost, Bayerische Voralpen Mitte, Ammergauer Alpen, Bayerische Voralpen West, Allgäuer Vorberge, Berchtesgadener Alpen



Avoid zones below glide-cracks

Avalanche danger is low. Glide-snow avalanches can trigger naturally on steep grass-covered slopes during the course of the day. Danger zones are located below glide-cracks. However, these are rare and potential avalanches remain mostly small-sized.

Small moist slides are possible in steep rocky terrain in all aspects during the course of the day.

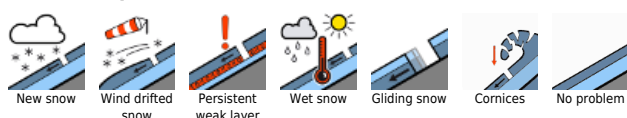
Snowpack structure

As a result of rising temperatures, the shallow snowpack is settling significantly. The snow is becoming moist, also on shady slopes, gliding movements are increasing. On shady spots at high altitudes there are faceted loose crystals bordering on melt-freeze crusts. A melt-freeze fundament is found on shady slopes above 1200 m. All in all, there is still very little snow.

Outlook

In spite of higher temperatures, avalanche danger levels are not expected to change much, initially. On sunny slopes, the ground is becoming bare.

Avalanche problems



Danger ratings

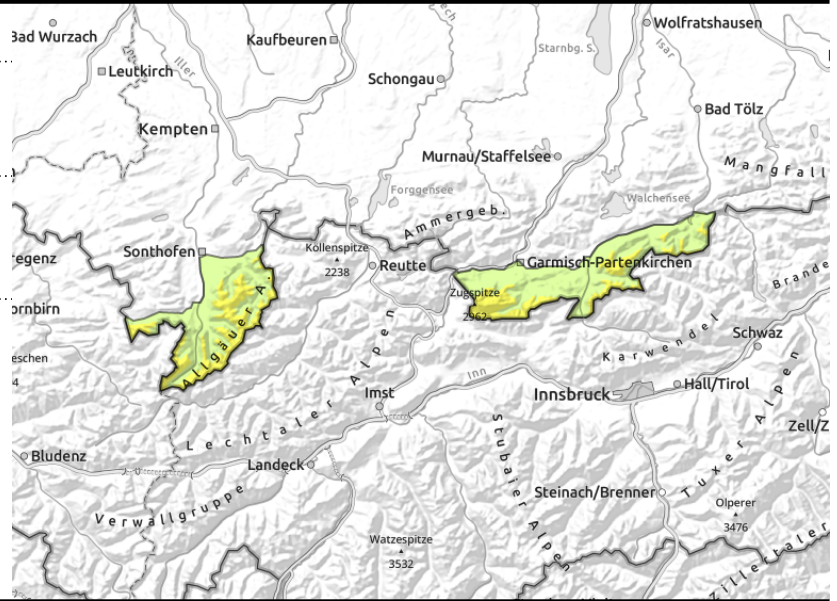
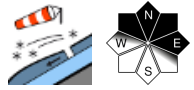


Expositions



Monday, 19.12.2022

Werdenfelser Alpen, Allgäuer Hauptkamm



Fresh trigger-sensitive snowdrifts in summit zones

Avalanche danger above 2000 m is moderate, below that altitude danger is low. Fresh snowdrift accumulations are small, but nevertheless can be triggered as a slab avalanche even by one sole person. This could bury a person in snow masses in case the release fractures down to weaker layers inside the old snowpack. Danger zones are located in wind-loaded gullied and bowls at high altitudes and on steep ridgeline slopes in NW-N-E aspects.

Small moist-snow slides are possible in steep rocky terrain in all aspects during the course of the day. On steep grass-covered slopes, small glide-snow avalanches cannot be ruled out.

Snowpack structure

As a result of intensifying southerly winds, small fresh snowdrift accumulations will be generated at high altitudes. They will be deposited atop loose, faceted layers and are prone to triggering. In addition, at high altitudes inside the snowpack there are layers which are prone to triggering - of faceted crystals bordering against melt-freeze crusts. Elsewhere the shallow snowpack is settling as a result of higher temperatures. On the surface the snow will become moist over the course of the day and forfeit its firmness. Gliding movement over smooth ground surfaces will increase. All in all, there is still too little snow.

Outlook

As a result of higher temperatures over the next few days, the snowpack will settle and stabilise at high altitudes. On sunny slopes the ground is becoming bare of snow.

Translated by Jeffrey McCabe, www.creativtrans.com

Avalanche problems



Danger ratings



Expositions

