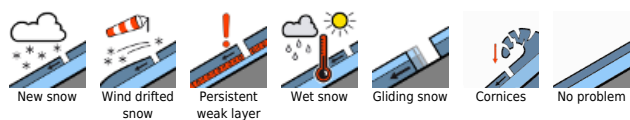


Insufficient snow for winter sports

	Bayerische Voralpen Ost, Chiemgauer Alpen West, Chiemgauer Alpen Ost, Bayerische Voralpen Mitte, Ammergauer Alpen, Bayerische Voralpen West	
	2000 m Berchtesgadener Alpen, Werdenfelser Alpen	
	1800 m Allgäuer Hauptkamm, Allgäuer Vorberge	

Avalanche problems



Danger ratings

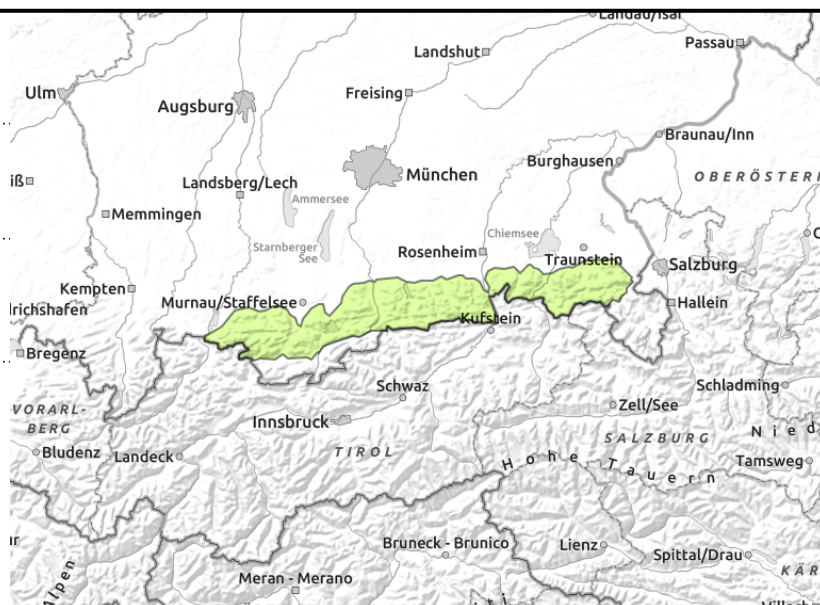
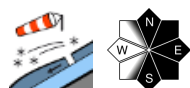
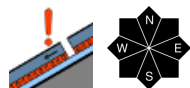


Expositions



Thursday, 15.12.2022

Bayerische Voralpen Ost, Chiemgauer Alpen West, Chiemgauer Alpen Ost, Bayerische Voralpen Mitte, Ammergauer Alpen, Bayerische Voralpen West



Isolated weak layers in the old snow

Avalanche danger is low. Inside the old snow at high altitudes are weak layers. Isolated danger zones are found esp. in rigeline terrain in gullies and bowls where there has been more snowfall. Small slab avalanches can be triggered particularly by large additional loading.

In addition, small snowdrift accumulations near ridgelines and in wind-loaded zones at high altitudes can be triggered still. Glide-snow avalanches are possible on steep grassy slopes.

Snowpack structure

At low altitudes there is still very little snow. Above 1300 m the snow depth is 30-60 cm. Inside the old snow are often expansively metamorphosed (faceted) layers sandwiched between crusts which can be triggered. At higher altitudes there are snowdrifts lying deposited atop loose layers of snow. At low altitudes the snow is moist. On Thursday, a thin melt-freeze crust could form.

Outlook

Little change in avalanche danger levels is anticipated.

Avalanche problems



Danger ratings

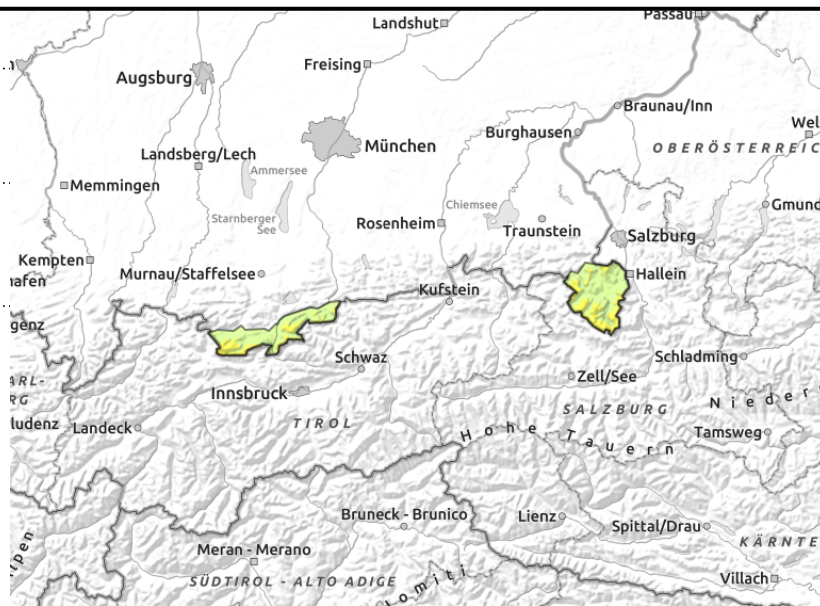
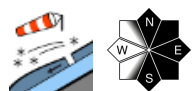
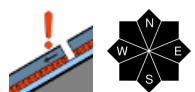


Expositions



Thursday, 15.12.2022

Berchtesgadener Alpen, Werdenfelser Alpen



Caution towards old snow and snowdrifts with increasing altitude

Avalanche danger above 2000 m is moderate, below that altitude danger is low. Main danger: weak layers in the old snow which are often found in gullies and bowls and near ridgelines where snowfall has been heaviest. A small (in isolated cases, medium-sized) avalanche can be triggered even by one sole winter sports enthusiast.

In addition, small snowdrift accumulations near ridgelines and in wind-loaded zones at high altitudes can be triggered still. Glide-snow avalanches are possible on steep grassy slopes.

Snowpack structure

The snow is moist at low altitudes, loose and powdery at high altitudes. Inside the old snow are layers of faceted crystals between crusts which can be triggered. At higher altitudes there are snowdrifts deposited on top of loose and expansively metamorphosed layers. A thin melt-freeze crust could be formed at intermediate altitude on Thursday. Elsewhere, there is little snow at low altitude, above 1300 m there are snow depths of 30-60 cm.

Outlook

Little change in avalanche danger levels is anticipated.

Avalanche problems



Danger ratings

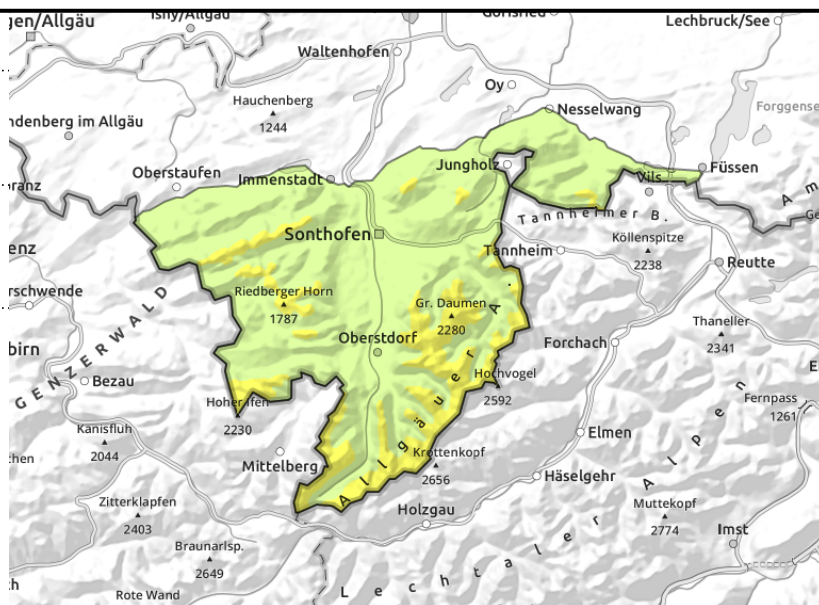
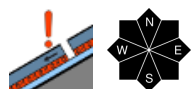
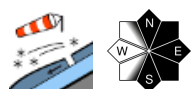


Expositions



Thursday, 15.12.2022

Allgäuer Hauptkamm, Allgäuer Vorberge



Carefully assess the snowdrifts and old snow at high altitudes

Avalanche danger above the timberline is moderate, below that altitude danger is low. Main problem: snowdrifts. Danger zones are found in steep ridgeline terrain on N/E/SE slopes and in wind-loaded gullies and bowls. Small slab avalanches can be triggered even by one single winter sports enthusiast. Apart from this, inside the old snow at higher altitudes, medium slab avalanches can be triggered, in some places even by one sole winter sports enthusiast in the snowy gullies and bowls. Glide-snow avalanches can unleash on steep grass-covered slopes and the rainfall can trigger small loose snowslides.

Snowpack structure

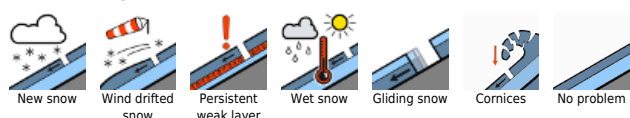
At low and intermediate altitudes the snow is moist from rainfall and higher temperatures. Small drifts lie deposited atop loose, faceted layers and on surface hoar. In addition, inside the old snow are layers of faceted crystals sandwiched between crusts which can be triggered. Elsewhere the snow depths are shallow, above 1300 m there are snow depths of 30-60 cm, more in gullies and bowls. The moist snow enhances glide snow movements.

Outlook

Little change in avalanche danger levels is anticipated.

Translated by Jeffrey McCabe, www.creativtrans.com

Avalanche problems



Danger ratings



Expositions

