

## Higher temperatures, minor precipitation in western regions

	Bayerische Voralpen Ost, Chiemgauer Alpen West, Chiemgauer Alpen Ost, Bayerische Voralpen Mitte	
	1800 m Berchtesgadener Alpen, Werdenfelser Alpen, Ammergauer Alpen, Bayerische Voralpen West	
	forestline Allgäuer Hauptkamm, Allgäuer Vorberge	

### Avalanche problems



### Danger ratings

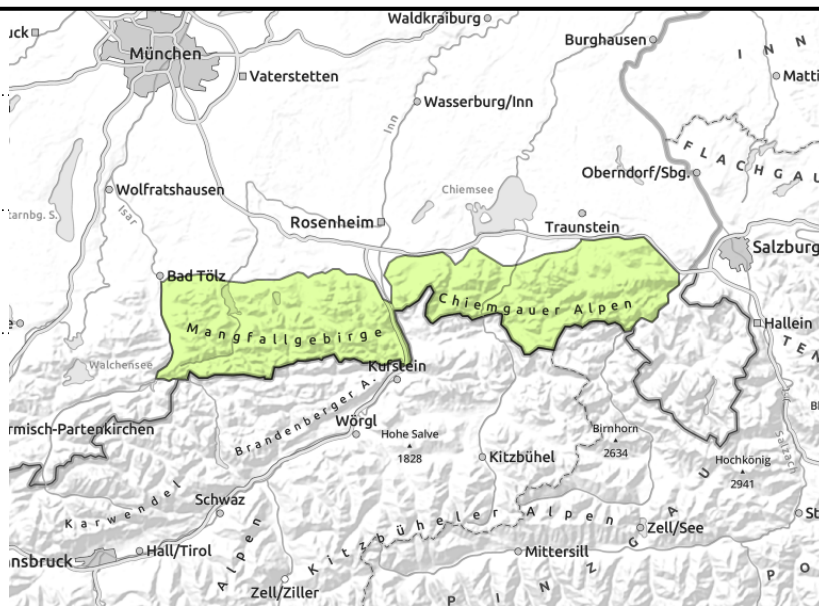
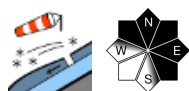
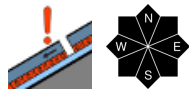


### Expositions



**14.12.2022**

**Bayerische Voralpen Ost, Chiemgauer Alpen West, Chiemgauer Alpen Ost, Bayerische Voralpen Mitte**



**Weak layers in the old snow in some places**

Avalanche danger is low. Main problem: weak layers in the old snow. Danger zones are located in steep ridgeline terrain in wind-loaded gullies and bowls. Slab avalanches can be easily triggered but tend to remain small-sized.

In addition, small snowdrift accumulations near ridgelines and in wind-loaded zones are risky. Slab avalanches can easily be triggered, but remain small. In isolated cases, glide-snow avalanches are possible on steep grass-covered slopes.

**Snowpack structure**

A few centimetres of fresh snow and some rainfall below about 1100 m atop the shallow, very cold snowpack. Above about 1300 m, 30-60 cm of fresh snow, more in gullies and bowls at high altitudes. Drifts lie atop faceted layers of loose snow and surface hoar. In addition, there are faceted and poorly bonded layers of crystals inside the old snowpack lying between crusts: these are trigger-sensitive. Where there has been rainfall, ice films can develop.

**Outlook**

Little change in avalanche danger levels is anticipated.

**Avalanche problems**



**Danger ratings**

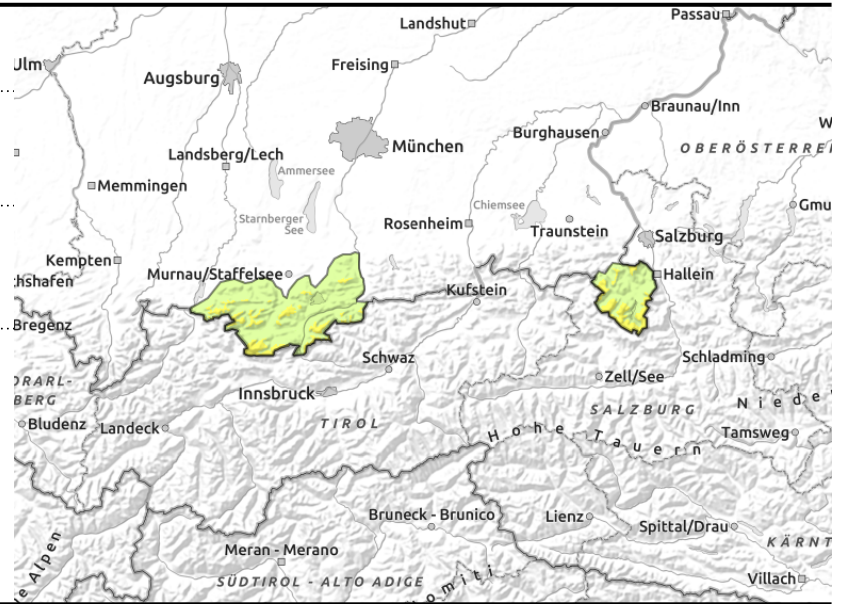
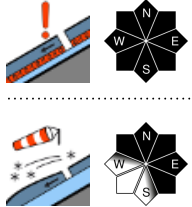


**Expositions**



**14.12.2022**

**Berchtesgadener Alpen, Werdenfelser Alpen, Ammergauer Alpen, Bayerische Voralpen West**



**Heed old snow and snowdrifts with increasing altitude**

Avalanche danger is low. Main problem: weak layers in the old snow. Danger zones are located in steep ridgeline terrain in wind-loaded gullies and bowls. Slab avalanches can be easily triggered but tend to remain small-sized.

In addition, small snowdrift accumulations near ridgelines and in wind-loaded zones are risky. Slab avalanches can easily be triggered, but remain small. In isolated cases, glide-snow avalanches are possible on steep grass-covered slopes.

**Snowpack structure**

A few centimetres of fresh snow and some rainfall below about 1100 m in eastern regions, below 1500 m in western regions, atop the shallow, very cold snowpack. Above about 1300 m, 30-60 cm of fresh snow, more in gullies and bowls at high altitudes. Drifts lie atop faceted layers of loose snow and surface hoar. In addition, there are faceted and poorly bonded layers of crystals inside the old snowpack lying between crusts: these are trigger-sensitive. Where there has been rainfall, ice films can develop.

**Outlook**

Little change in avalanche danger levels is anticipated.

**Avalanche problems**



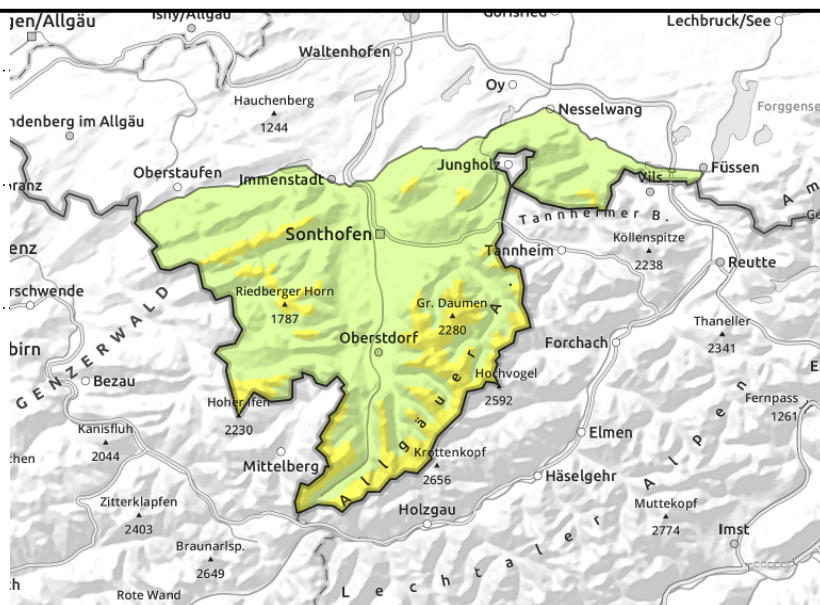
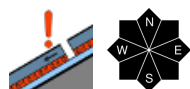
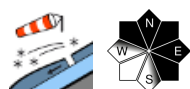
**Danger ratings**



**Expositions**



**Allgäuer Hauptkamm, Allgäuer Vorberge**



**Carefully assess the snowdrifts at high altitudes**

Avalanche danger above the timberline is moderate, below that altitude danger is low. Main problem: snowdrifts. Danger zones are found in steep ridgeline terrain on NW/E/SE slopes and in wind-loaded gullies and bowls. Small slab avalanches can be triggered even by one single winter sports enthusiast. Apart from this, inside the old snow at higher altitudes, medium slab avalanches can be triggered, in some places even by one sole winter sports enthusiast in the snowy gullies and bowls. Glide-snow avalanches can unleash on steep grass-covered slopes and the rainfall can trigger small loose snowslides.

**Snowpack structure**

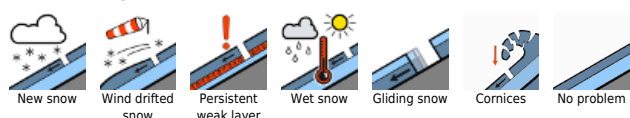
10-20 cm of fresh snow, below 1500 m some rainfall, atop the shallow, very cold snowpack. Above 1300 m, 30-60 cm of snow, more in some gullies and bowls. Small snowdrift accumulations lie deposited atop faceted and loose layers plus surface hoar. In addition, inside the old snow are layers of faceted crystals, poorly bonded snow between crusts. Wherever rain fell on the snowpack, thin layers of ice can form. In some places the snowpack is moist down to the ground, which enhances gliding movements of the whole snowpack.

**Outlook**

Little change in avalanche danger levels is anticipated.

Translated by Jeffrey McCabe, [www.creativtrans.com](http://www.creativtrans.com)

**Avalanche problems**



**Danger ratings**



**Expositions**

