

Not much snow in the Bavarian Alps

	<p>Bayerische Voralpen Mitte, Bayerische Voralpen Ost, Chiemgauer Alpen West, Chiemgauer Alpen Ost, Allgäuer Vorberge</p>	
	<p>1800 m Berchtesgadener Alpen, Werdenfelser Alpen, Ammergauer Alpen, Allgäuer Hauptkamm, Bayerische Voralpen West</p>	

Avalanche problems



Danger ratings

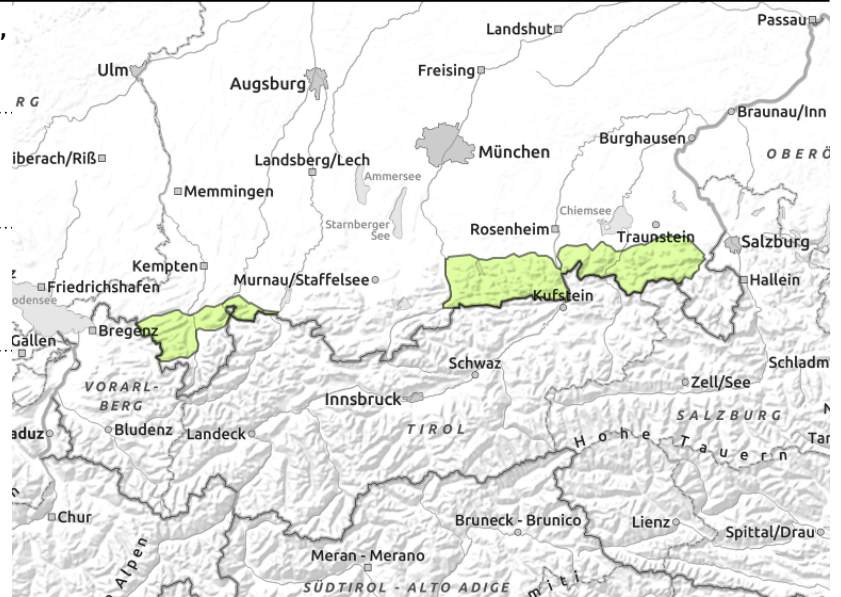
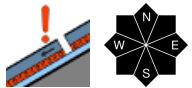
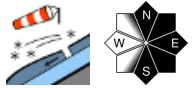


Expositions



13.12.2022

Bayerische Voralpen Mitte, Bayerische Voralpen Ost, Chiemgauer Alpen West, Chiemgauer Alpen Ost, Allgäuer Vorberge



Attention: fresh snowdrifts

Avalanche danger is low. Main problem: fresh snowdrift accumulations. Danger zones are located in steep ridgeline terrain in N-E-S aspects and in wind-loaded gullies and bowls. Slab avalanches can be easily triggered but tend to remain small-sized.

Old snow at high altitudes can also trigger small slab avalanches, particularly through additional loading in gullies and bowls in all expositions where snowfall has been heavy. In isolated cases, glide-snow avalanches are possible on steep grass-covered slopes.

Snowpack structure

Near to the valley floors, generally only a small amount of snow. Above about 1300 m, 30-60 cm of snow lies on the ground, more in the gullies and bowls. On Sunday night above 1800 m, fresh snowdrift accumulations will form, deposited in wind-protected zones atop the loose snow from the weekend - prone to triggering. Inside the old snowpack are loose layers between older crusts and wind crusts. The old snow is irregularly distributed, lies distributed mostly in wind-loaded zones.

Outlook

Avalanche danger levels in the western regions can increase due to precipitation, in the eastern regions the danger will gradually decrease as temperatures rise.

Avalanche problems



Danger ratings

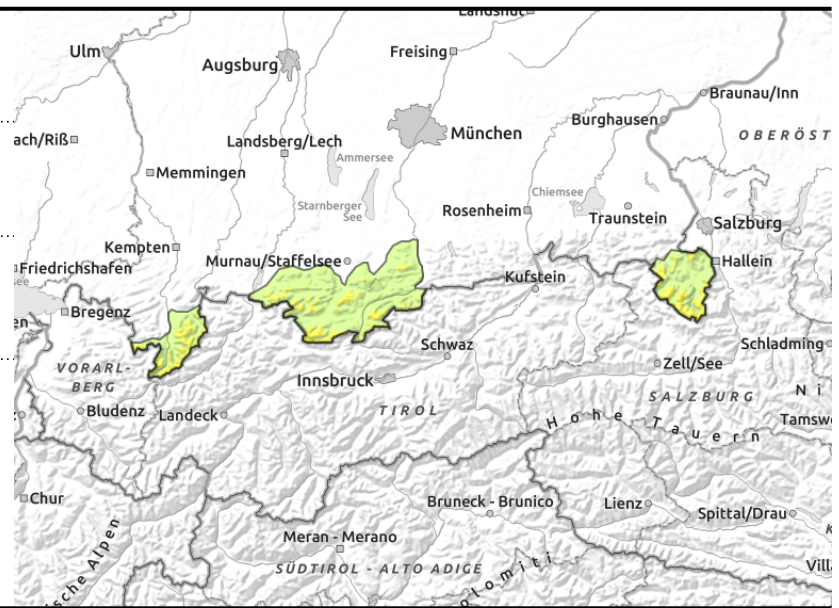
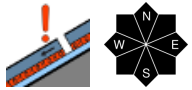
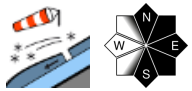
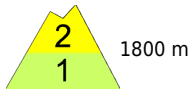


Expositions



13.12.2022

**Berchtesgadener Alpen, Werdenfeller Alpen,
Ammergauer Alpen, Allgäuer Hauptkamm,
Bayerische Voralpen West**



Attention: fresh snowdrifts with increasing altitude

Avalanche danger is above 1800 m is moderate, below that altitude, low. Main problem: fresh snowdrift accumulations. Danger zones are located in steep ridgeline terrain in N-E-S aspects and in wind-loaded gullies and bowls. Slab avalanches can be easily triggered but tend to remain small-sized. Small slab avalanches can be triggered even by one single winter sports enthusiast. With ascending altitude, the frequency of danger zones increases. Old snow at high altitudes can also trigger small slab avalanches, particularly through additional loading in gullies and bowls in all expositions where snowfall has been heavy. In isolated cases, glide-snow avalanches are possible on steep grass-covered slopes.

Snowpack structure

Near to the valley floors, generally only a small amount of snow. Above about 1300 m, 30-60 cm of snow lies on the ground, more in the gullies and bowls. On Sunday night above 1800 m, fresh snowdrift accumulations will form, deposited in wind-protected zones atop the loose snow from the weekend - prone to triggering. Inside the old snowpack are loose layers between older crusts. The old snow is irregularly distributed, lies mostly in wind-loaded terrain. Only at high altitudes is the snow more cohesive.

Outlook

Avalanche danger levels in the western regions can increase due to precipitation, in the eastern regions the danger will gradually decrease as temperatures rise.

Translated by Jeffrey McCabe, www.creativtrans.com

Avalanche problems



Danger ratings



Expositions

