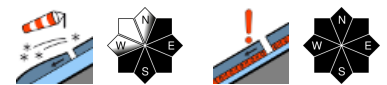


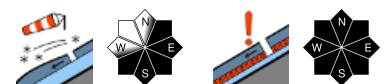
Not much snow in the Bavarian Alps



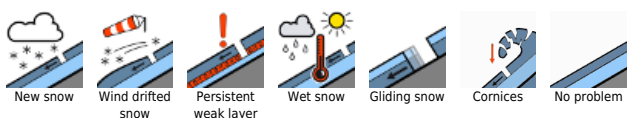
Allgäuer Vorberge, Allgäuer Hauptkamm, Ammergauer Alpen, Werdenfeller Alpen, Bayerische Voralpen West, Bayerische Voralpen Mitte, Bayerische Voralpen Ost, Chiemgauer Alpen West, Chiemgauer Alpen Ost



Berchtesgadener Alpen



Avalanche problems



Danger ratings

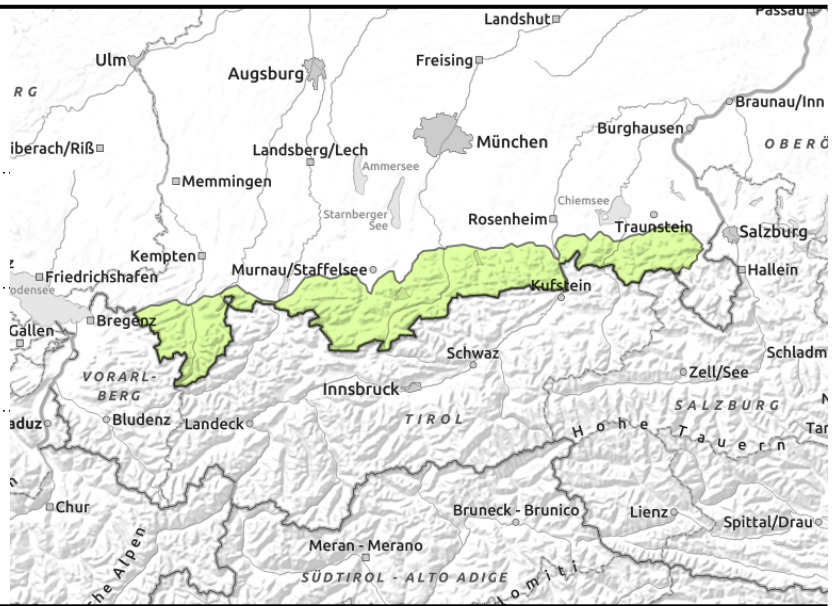
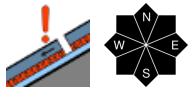
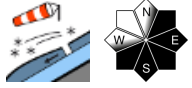


Expositions



12.12.2022

Allgäuer Vorberge, Allgäuer Hauptkamm, Ammergauer Alpen, Werdenfelser Alpen, Bayerische Voralpen West, Bayerische Voralpen Mitte, Bayerische Voralpen Ost, Chiemgauer Alpen West, Chiemgauer Alpen Ost



Attention: fresh snowdrifts at high altitudes

Avalanche danger in the Berchtesgadener Alps above 1800 m is moderate, elsewhere danger is low. Main problem: fresh snowdrift accumulations. Danger zones are located above approximately 1800 m in steep ridgeline terrain and in wind-loaded gullies and bowls on east-facing and south-facing steep slopes. Slab avalanches can be triggered even by minimum additional loading, but tend to remain small-sized (can attain medium size in Berchtesgadener Alps). The snowdrifts are easily recognized for those with experience.

Old snow at high altitudes can also trigger small slab avalanches, particularly through additional loading in gullies and bowls in all expositions where snowfall has been heavy. In isolated cases, glide-snow avalanches are possible on steep grass-covered slopes. Glide cracks are indicators of imminent danger.

Snowpack structure

Near to the valley floors, generally only a small amount of snow. Above about 1300 m, 30-60 cm of snow lies on the ground, more in the gullies and bowls. On Sunday night above 1800 m, fresh snowdrift accumulations will form, deposited in wind-protected zones atop the loose snow from the weekend - prone to triggering. Inside the old snowpack are loose layers between older crusts and wind crusts. Towards the ground, the snowpack is often moist.

Outlook

Avalanche danger is not expected to change significantly.

Avalanche problems



Danger ratings

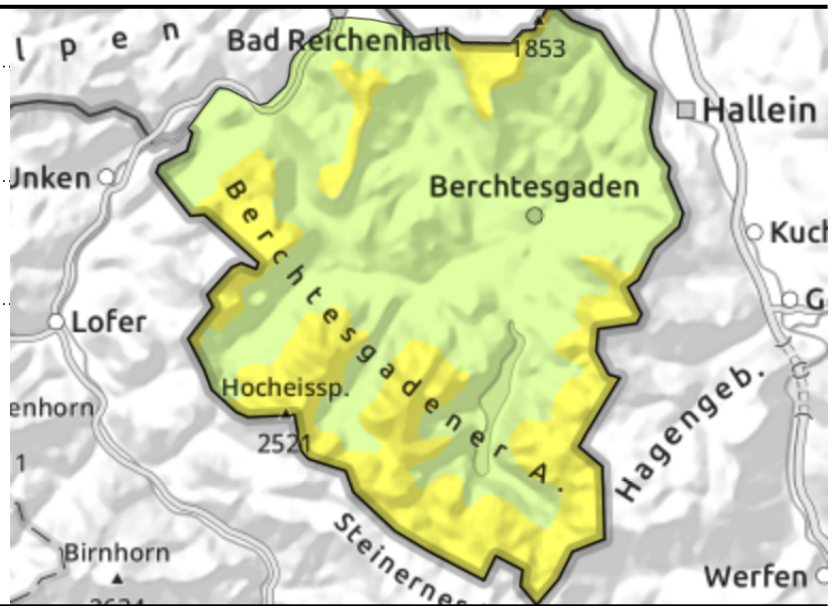
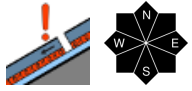
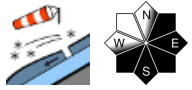
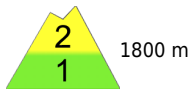


Expositions



12.12.2022

Berchtesgadener Alpen



Attention: fresh snowdrifts at high altitudes

Avalanche danger in the Berchtesgadener Alps above 1800 m is moderate, elsewhere danger is low. Main problem: fresh snowdrift accumulations. Danger zones are located above approximately 1800 m in steep ridgeline terrain and in wind-loaded gullies and bowls on east-facing and south-facing steep slopes. Slab avalanches can be triggered even by minimum additional loading, but tend to remain small-sized (can attain medium size in Berchtesgadener Alps). The snowdrifts are easily recognized for those with experience.

Old snow at high altitudes can also trigger small slab avalanches, particularly through additional loading in gullies and bowls in all expositions where snowfall has been heavy. In isolated cases, glide-snow avalanches are possible on steep grass-covered slopes. Glide cracks are indicators of imminent danger.

Snowpack structure

Near to the valley floors, generally only a small amount of snow. Above about 1300 m, 30-60 cm of snow lies on the ground, more in the gullies and bowls. On Sunday night above 1800 m, fresh snowdrift accumulations will form, deposited in wind-protected zones atop the loose snow from the weekend - prone to triggering. Inside the old snowpack are loose layers between older crusts and wind crusts. Towards the ground, the snowpack is often moist.

Outlook

Avalanche danger is not expected to change significantly.

Translated by Jeffrey McCabe, www.creativtrans.com

Avalanche problems



Danger ratings



Expositions

