

Not much snow on the ground



Allgäuer Vorberge, Allgäuer Hauptkamm, Ammergauer Alpen, Werdenfeller Alpen, Bayerische Voralpen West, Bayerische Voralpen Mitte, Bayerische Voralpen Ost, Chiemgauer Alpen West, Chiemgauer Alpen Ost, Berchtesgadener Alpen



Avalanche problems



Danger ratings

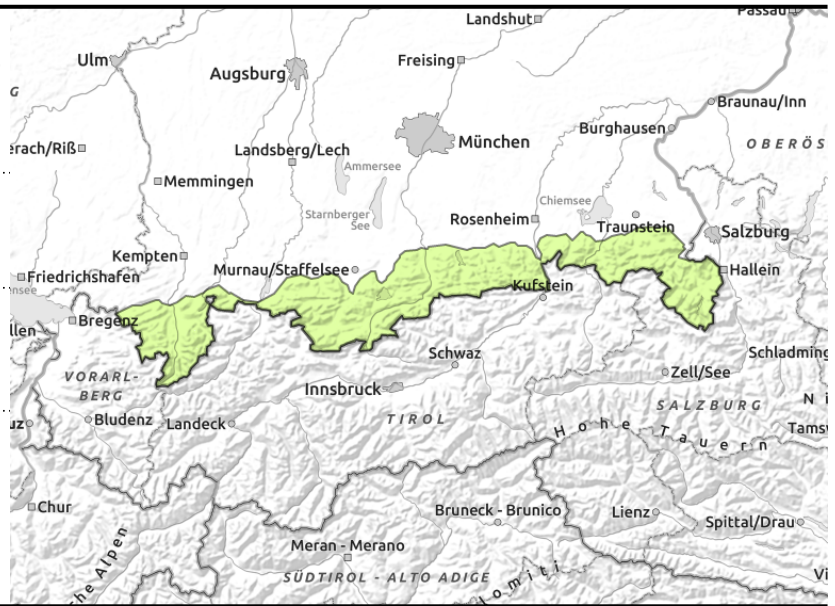
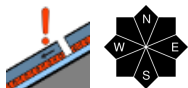
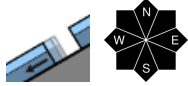


Expositions



11.12.2022

**Allgäuer Vorberge, Allgäuer Hauptkamm,
Ammergauer Alpen, Werdenfelser Alpen, Bayerische
Voralpen West, Bayerische Voralpen Mitte,
Bayerische Voralpen Ost, Chiemgauer Alpen West,
Chiemgauer Alpen Ost, Berchtesgadener Alpen**



Risk of injuries from ground/rocks outweighs avalanche danger

Avalanche danger in the Bavarian Alps is low. In isolated cases, naturally triggered small-to-medium sized glide-snow avalanches are possible on steep slopes where the ground surface is smooth and where there is sufficient snow. Glide cracks are indicators of the danger.

At higher altitudes, small slab avalanches can be triggered particularly by large additional loading in the old snow in snowy gullies and bowls and, most of all, near ridgelines.

Snowpack structure

Near to the valley floors, generally only a small amount of snow. Above about 1300 m, 20-50 cm of snow lies on the ground, more in the gullies and bowls. Loose layers are evident in the old snowpack, lodged between older crusts and wind layers. Closer to the ground the snowpack is often moist.

Outlook

Due to only a small amount of fresh snow and cold temperatures, the avalanche situation is not expected to change significantly.

Translated by Jeffrey McCabe, www.creativtrans.com

Avalanche problems



Danger ratings



Expositions

