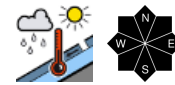


Predominantly favorable conditions in the Bavarian Alps.

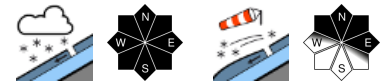


Allgäuer Vorberge, Ammergauer Alpen, Bayerische Voralpen West, Bayerische Voralpen Mitte, Bayerische Voralpen Ost, Chiemgauer Alpen West, Chiemgauer Alpen Ost

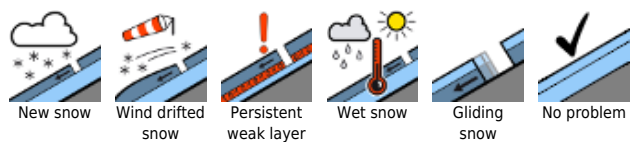


2200 m

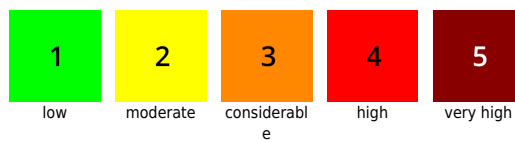
Allgäuer Hauptkamm, Berchtesgadener Alpen, Werdenfelser Alpen



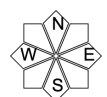
Avalanche problems



Danger ratings

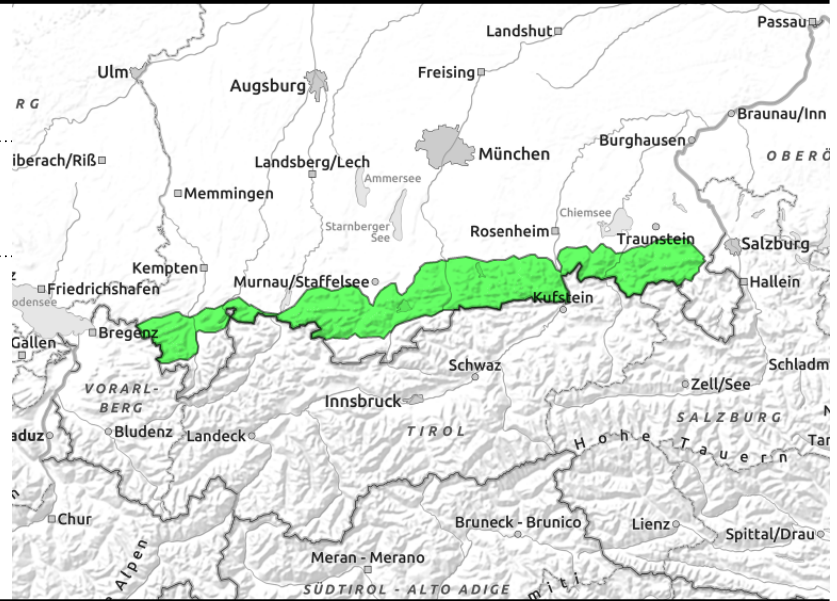
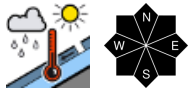


Expositions



26.04.2022 through 28.04.2022

Allgäuer Vorberge, Ammergauer Alpen, Bayerische Voralpen West, Bayerische Voralpen Mitte, Bayerische Voralpen Ost, Chiemgauer Alpen West, Chiemgauer Alpen Ost



Small wet snow avalanches possible.

Avalanche danger is low. In some places the wet snow can be problematic. Small wet loose-snow avalanches or slab avalanches can trigger on extremely steep slopes where there is still enough snow. On steep grass-covered slopes, in addition, glide-snow avalanches cannot be ruled out. Due to warm temperatures and rain the number of avalanche prone location will increase slightly on Tuesday and Wednesday.

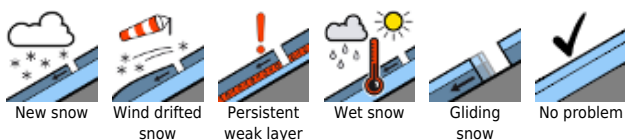
Snowpack structure

All in all, the snowpack is compact and, by and large, stable. Superficially the snowpack softens in the warm temperatures and rain, mostly down to the layer of Sahara dust. It is often wet down to the ground which enables gliding movements of the snow masses. At summit altitudes some new snow will fall accompanied by partly stormy wind; below that altitude there will be on and off rain.

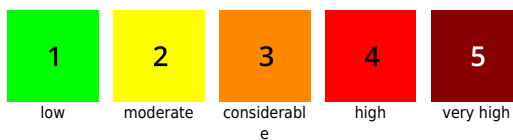
Outlook

Avalanche danger will remain low. The next Avalanche Bulletin update will be published on Thursday. Monday.

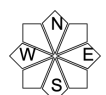
Avalanche problems



Danger ratings

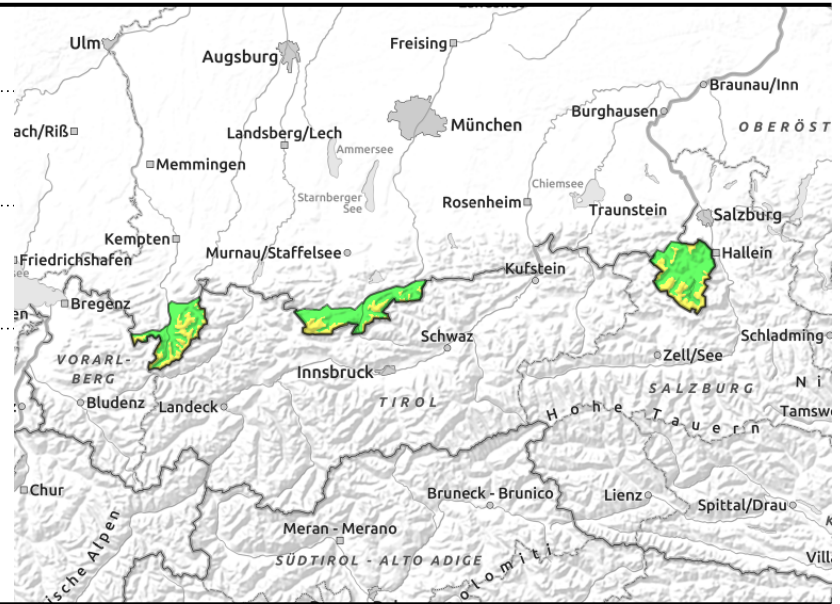
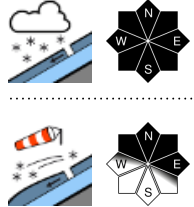
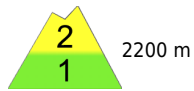


Expositions



26.04.2022 through 28.04.2022

Allgäuer Hauptkamm, Berchtesgadener Alpen, Werdenfeller Alpen



At high altitudes the loose new snow can trigger naturally.

Moderate avalanche danger above 2200m, below that it is low. In patches, new snow at high altitudes can be problematic. A few small to medium-sized loose snow avalanches are possible in steep rocky terrain. Small-scale snowdrift accumulations adjacent to ridgelines can sometimes be prone to triggering. Slab avalanches remain mostly small and the danger of taking a fall exceeds that of being buried in snow.

On steep grass-covered slopes, in addition, glide-snow avalanches cannot be ruled out. At intermediate altitudes the number of avalanche prone locations will increase slightly on Tuesday and Wednesday due to rain. Small wet snow avalanches are also possible.

Snowpack structure

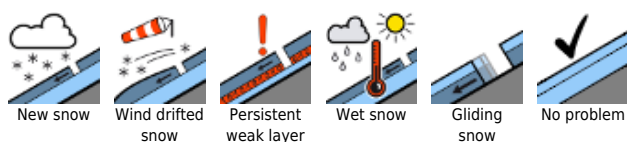
All in all, the old snowpack is compact and, by and large, stable. Above 2000m some new snow will fall accompanied by partly stormy wind; below that altitude there will be on and off rain. Higher up some small-scale snowdrifts will accumulate which can partly still be prone to triggering. Due to sun and warm temperatures the new snow also forfeits cohesion. At intermediate altitudes and on sunny high altitude slopes the snowpack softens mostly down to the Saharan dust crust as a consequence of warm temperatures.

Outlook

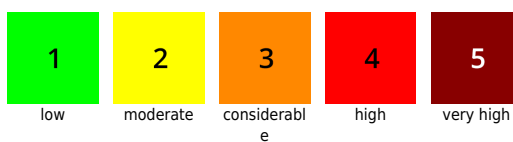
On Thursday and Friday the weather will become more pleasant. The danger of dry snow avalanches will recede and wet snow avalanches will be subject to a daytime danger cycle. The next Avalanche Bulletin update will be published on Thursday.

Translated by Jeffrey McCabe, www.creativtrans.com

Avalanche problems



Danger ratings



Expositions

