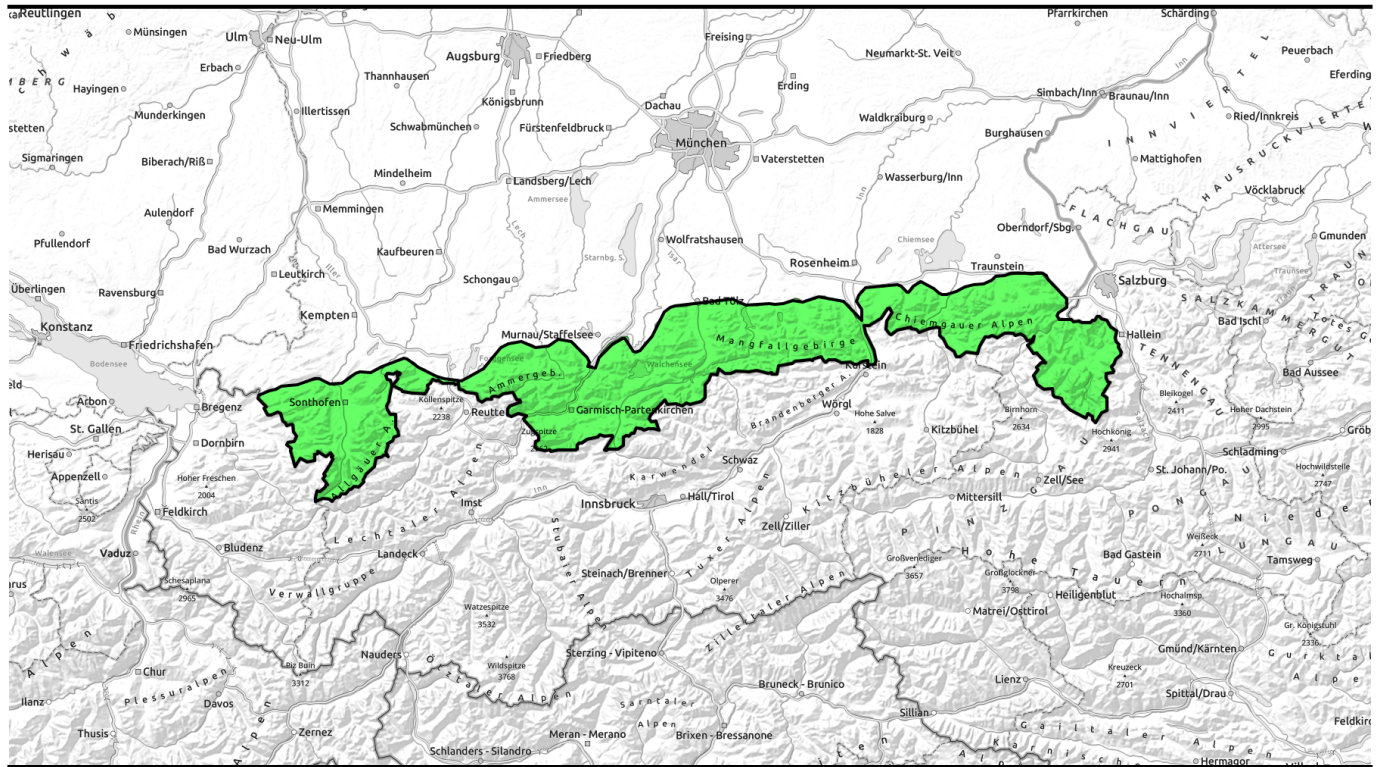


23.04.2022 through 25.04.2022



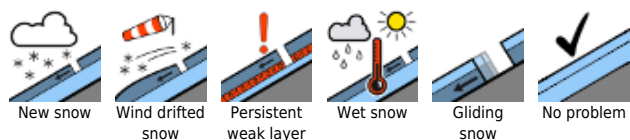
Low avalanche danger in the Bavarian Alps



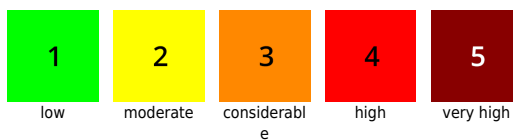
Allgäuer Vorberge, Allgäuer Hauptkamm, Ammergauer Alpen, Werdenfeller Alpen, Bayerische Voralpen West, Bayerische Voralpen Mitte, Bayerische Voralpen Ost, Chiemgauer Alpen West, Chiemgauer Alpen Ost, Berchtesgadener Alpen



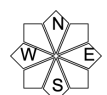
Avalanche problems



Danger ratings



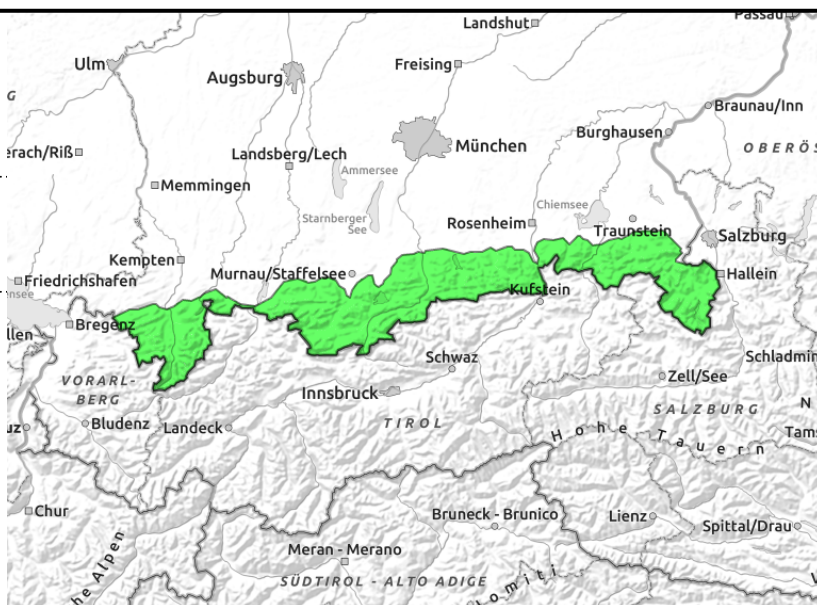
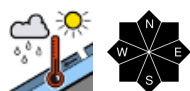
Expositions





23.04.2022 through 25.04.2022

Allgäuer Vorberge, Allgäuer Hauptkamm, Ammergauer Alpen, Werdenfelser Alpen, Bayerische Voralpen West, Bayerische Voralpen Mitte, Bayerische Voralpen Ost, Chiemgauer Alpen West, Chiemgauer Alpen Ost, Berchtesgadener Alpen



Risks of falling on icy encrusted surfaces require attentiveness

Avalanche danger in the Bavarian Alps is low. In isolated cases the wet snow can be problematic. Small wet loose-snow avalanches or slab avalanches can trigger on extremely steep slopes where there is still enough snow. On steep grass-covered slopes, in addition, glide-snow avalanches cannot be ruled out. Due to warm temperatures the frequency of avalanche prone locations will increase slightly on Saturday.

Starting on Sunday, small ridgeline snowdrift accumulations at high altitudes which in places will be prone to triggering. Potential avalanches will be small, the risks of falling outweigh those of being buried in snow.

Snowpack structure

All in all, the snowpack is compact and stable. On shady slopes the snow is hard, often icy. Superficially the snowpack softens in the warm temperatures, mostly down to the layer of Sahara dust. Starting on Sunday above 2000 m, a few centimetres of fresh snow are anticipated, accompanied by storm-strength winds.

Outlook

Avalanche danger will remain low. The next Avalanche Bulletin update will be published on Monday.

Translated by Jeffrey McCabe, www.creativtrans.com

Avalanche problems



Danger ratings



Expositions

