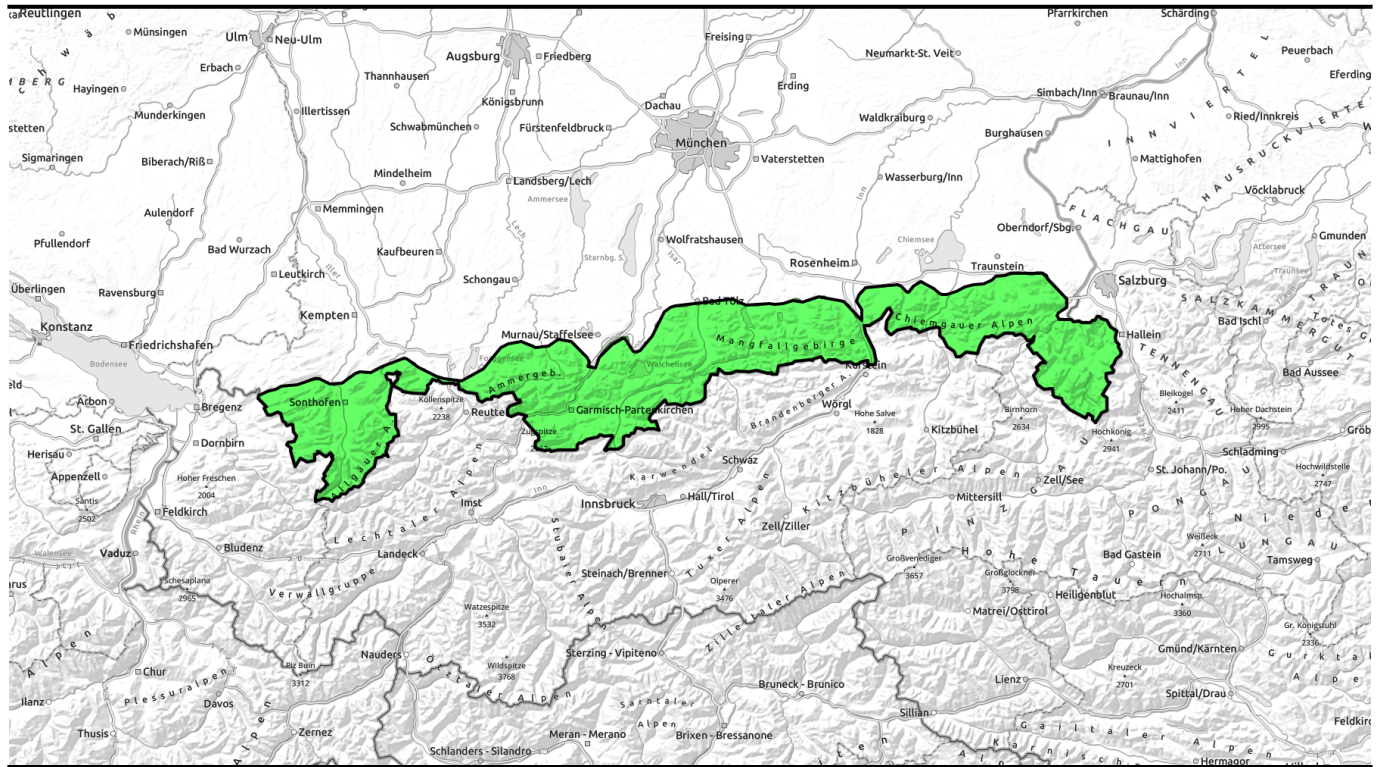


20.04.2022 through 22.04.2022



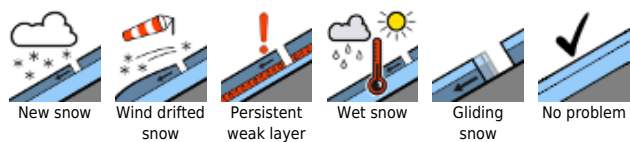
Low avalanche danger in the Bavarian Alps



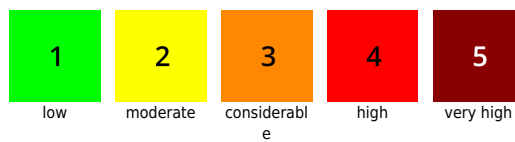
Allgäuer Vorberge, Allgäuer Hauptkamm, Ammergauer Alpen, Werdenfeller Alpen, Bayerische Voralpen West, Bayerische Voralpen Mitte, Bayerische Voralpen Ost, Chiemgauer Alpen West, Chiemgauer Alpen Ost, Berchtesgadener Alpen



Avalanche problems



Danger ratings



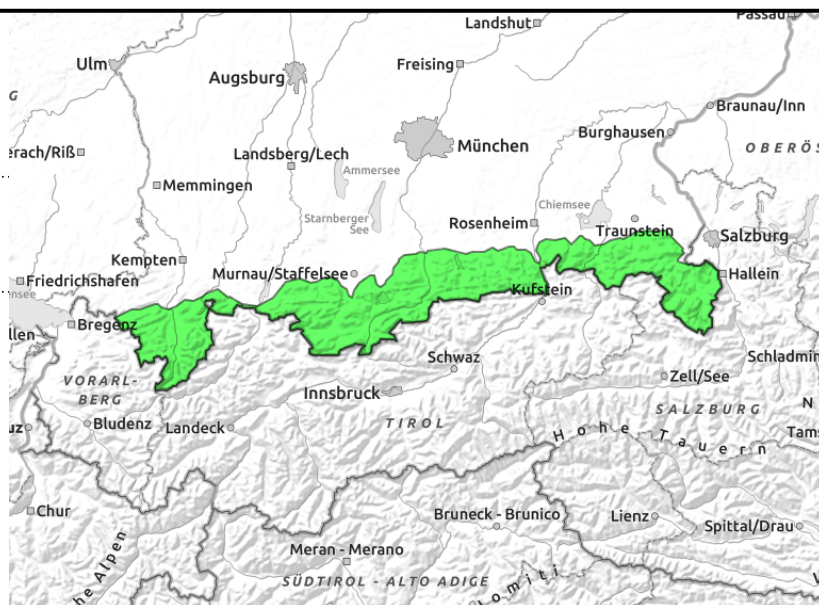
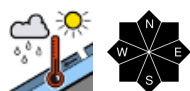
Expositions





20.04.2022 through 22.04.2022

Allgäuer Vorberge, Allgäuer Hauptkamm, Ammergauer Alpen, Werdenfelser Alpen, Bayerische Voralpen West, Bayerische Voralpen Mitte, Bayerische Voralpen Ost, Chiemgauer Alpen West, Chiemgauer Alpen Ost, Berchtesgadener Alpen



Risk of falling on icy and encrusted surfaces!

Avalanche danger in the Bavarian Alps is low. In isolated cases, wet snow can be problematic. Small wet loose-snow or slab avalanches are possible on extremely steep sunny slopes where there is sufficient snow. On steep grass-covered slopes, glide-snow avalanches cannot be ruled out, including on shady slopes. Avalanche danger increases slightly in the afternoon.

Snowpack structure

Overall the snowpack is compact and predominantly stable. On Tuesday night in the Eastern regions of the Bavarian Alps, a minor bit of fresh snow is expected. On Thursday it will rapidly settle and bond with the old snowpack surface. In the following days it will form a melt-freeze crust during the nocturnal hours which will soften up on sunny slopes during the daytime. On shady slopes the snow is hard, often icy. At high altitudes the layer of Sahara dust from mid-March is a potential weak layer, although an extensive fracture is no longer expected. At intermediate altitudes there is little snow, particularly on south-facing slopes.

Outlook

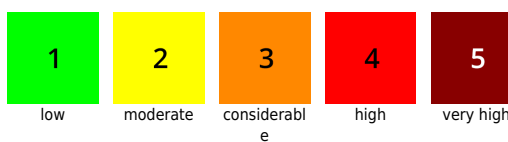
Avalanche danger will remain low, due to cool temperatures and sunshine. The next update of the Avalanche Bulletin will be published on Friday.

Translated by Jeffrey McCabe, www.creativtrans.com

Avalanche problems



Danger ratings



Expositions

