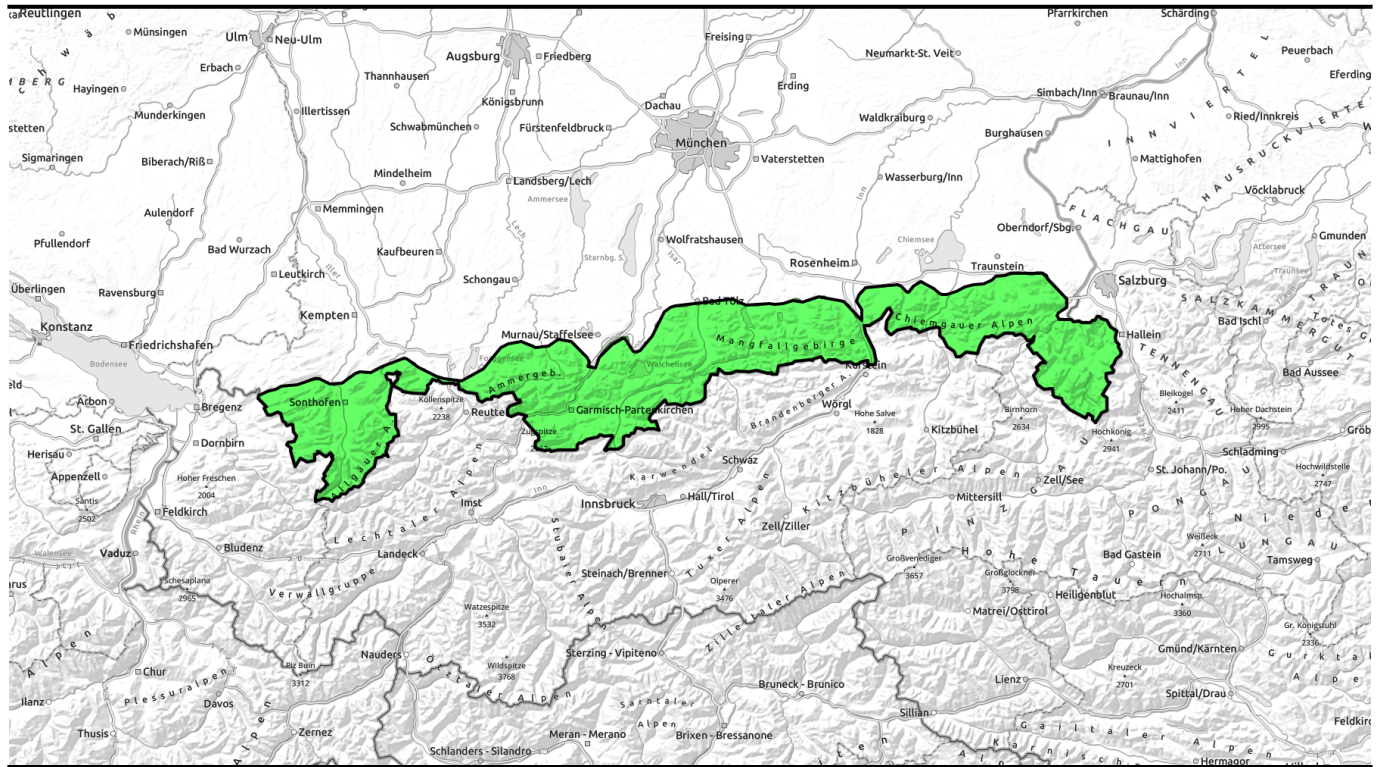


17.04.2022 through 19.04.2022



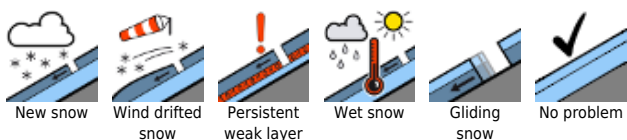
Low avalanche danger in the Bavarian Alps



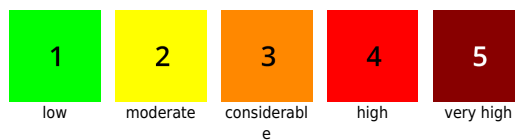
Bayerische Voralpen West, Bayerische Voralpen Mitte, Bayerische Voralpen Ost, Chiemgauer Alpen West, Chiemgauer Alpen Ost, Ammergauer Alpen, Allgäuer Hauptkamm, Werdenfelser Alpen, Berchtesgadener Alpen



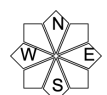
Avalanche problems



Danger ratings

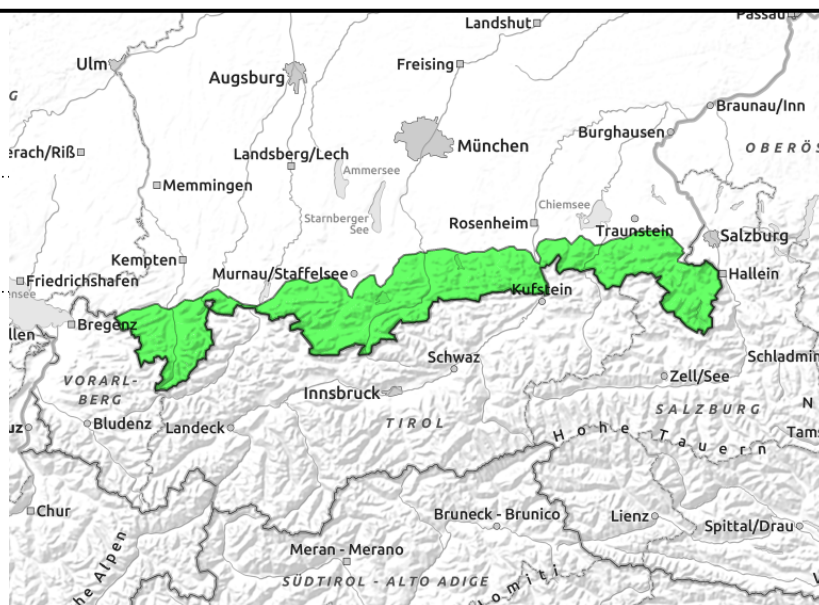
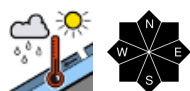


Expositions



17.04.2022 through 19.04.2022

Bayerische Voralpen West, Bayerische Voralpen Mitte, Bayerische Voralpen Ost, Chiemgauer Alpen West, Chiemgauer Alpen Ost, Ammergauer Alpen, Allgäuer Vorberge, Allgäuer Hauptkamm, Werdenfeller Alpen, Berchtesgadener Alpen



Heed danger of taking a fall on icy and encrusted slopes!

Avalanche danger in the Bavarian Alps is low. In isolated cases, wet snow can be a problem. Small wet loose snow or slab avalanches are possible on extremely steep sun-drenched slopes with still sufficient snow. Glide snow avalanches cannot be excluded on steep grass-covered slopes. This also applies to shady slopes. Avalanche danger rises slightly by afternoon.

Snowpack structure

All in all, the snowpack is compact and, by and large, stable. A melt-freeze crusts forms during the night which - on sunny slopes - softens again superficially during the day. On shady slopes the snow is hard and often icy. At higher altitudes the Saharan dust layer of mid-March constitutes a potential weak layer. However, no major fracture propagation is anticipated. At intermediate altitudes only little snow remains in south-facing terrain.

Outlook

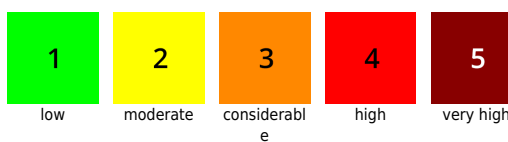
Cool temperatures keep the avalanche danger low. The next update of the avalanche report will probably be published on Tuesday.

Translated by Jeffrey McCabe, www.creativtrans.com

Avalanche problems



Danger ratings



Expositions

