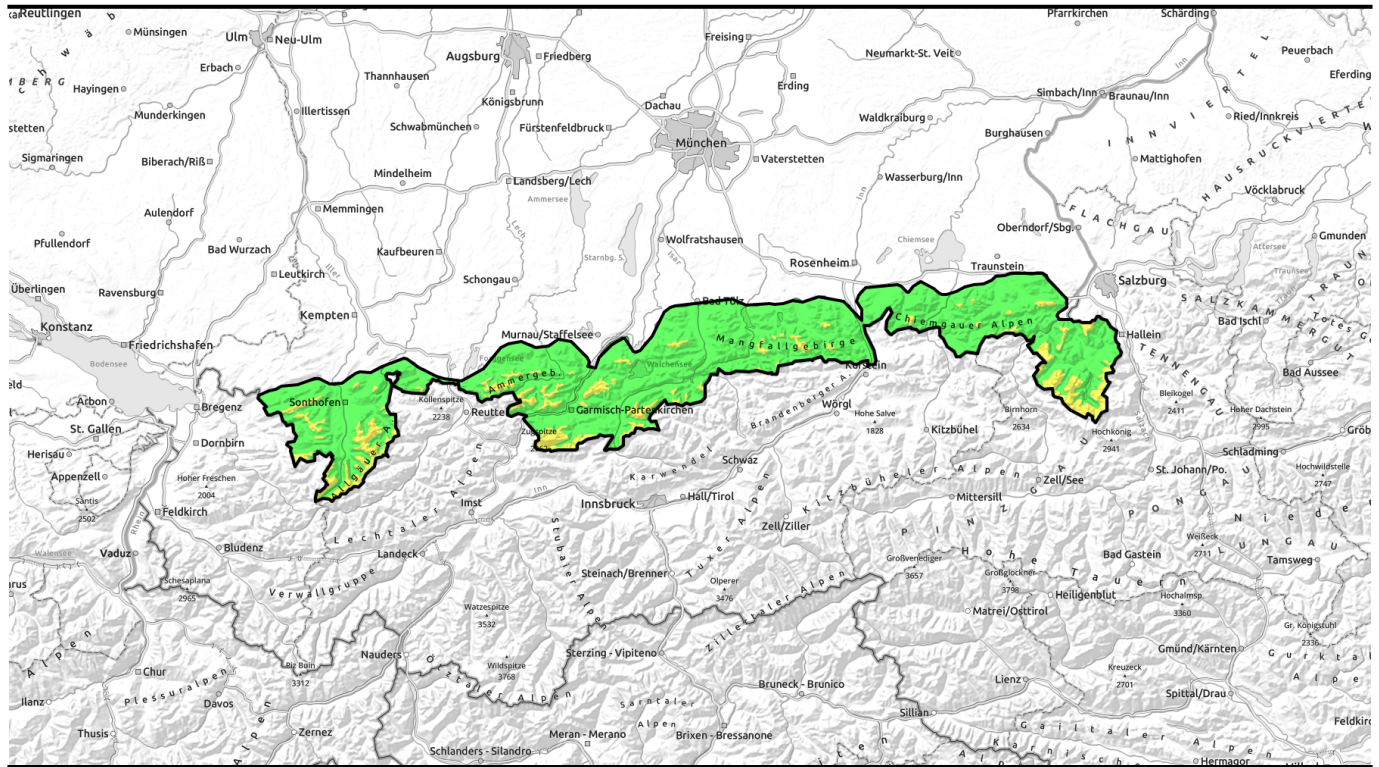


16.04.2022



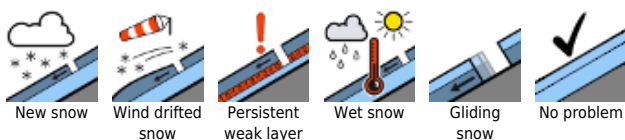
Snowpack moist down to deeply embedded layers.



Bayerische Voralpen West, Bayerische Voralpen Mitte, Bayerische Voralpen Ost, Chiemgauer Alpen West, Chiemgauer Alpen Ost, Ammergauer Alpen, Allgäuer Vorberge, Allgäuer Hauptkamm, Werdenfeller Alpen, Berchtesgadener Alpen



Avalanche problems



Danger ratings



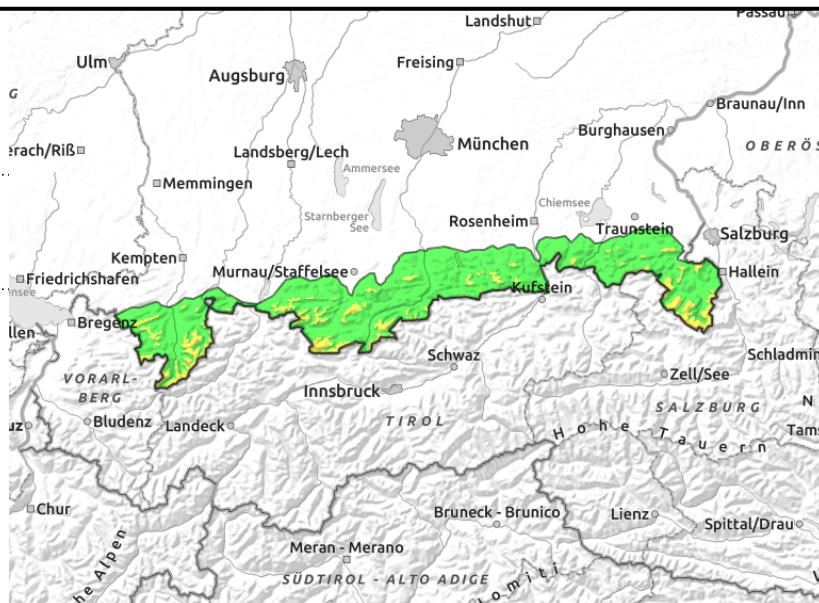
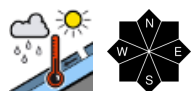
Expositions





16.04.2022

Bayerische Voralpen West, Bayerische Voralpen Mitte, Bayerische Voralpen Ost, Chiemgauer Alpen West, Chiemgauer Alpen Ost, Ammergauer Alpen, Allgäuer Vorberge, Allgäuer Hauptkamm, Werdenfeller Alpen, Berchtesgadener Alpen



Slab avalanches can release on Saharan dust layer.

Avalanche danger above 1500m is moderate, below that altitude danger is low. Main problem: wet snow. Even in early morning possibility that mainly small and medium-sized wet slab and glide snow avalanches trigger naturally on steep slopes with still sufficient snow. Glide cracks are red flags of this risk.

Snowpack structure

Up to high altitude the snowpack is moist down to deeply embedded layers, widespread it is wet at ground level. During the night the snowpack only consolidates minimally. At higher altitudes the Saharan dust layer of mid-March constitutes a barrier layer. Here, the water lead to a weakening of the snowpack stability. At intermediate altitudes there is not much snow left, in particular in south-facing terrain..

Outlook

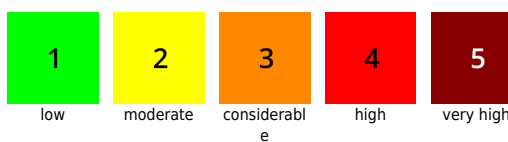
Sunday will see the onset of springtime conditions with favorable conditions in the morning hours and a slight increase of the avalanche danger as the day progresses.

Translated by Jeffrey McCabe, www.creativtrans.com

Avalanche problems



Danger ratings



Expositions

