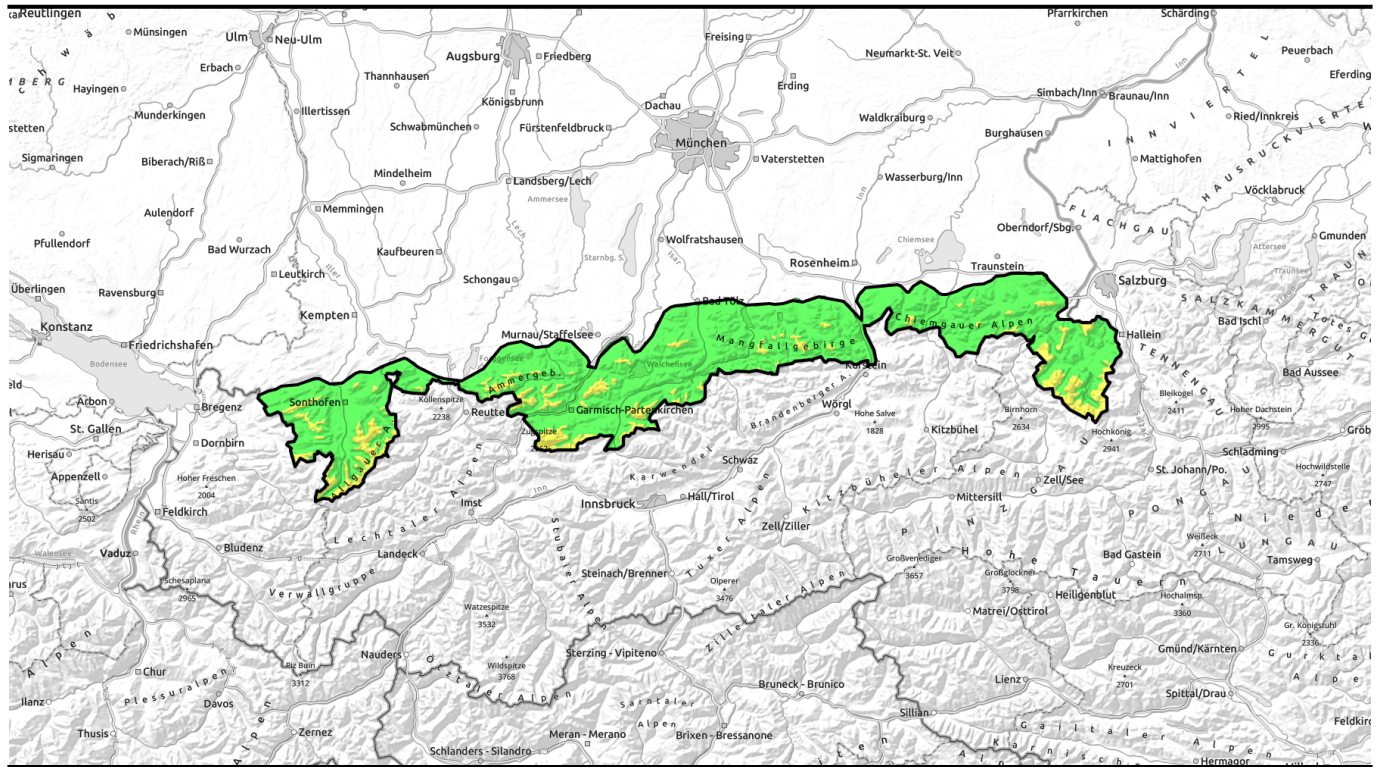


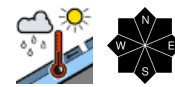
15.04.2022



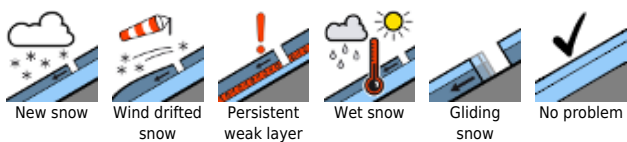
Rainfall up to high altitudes



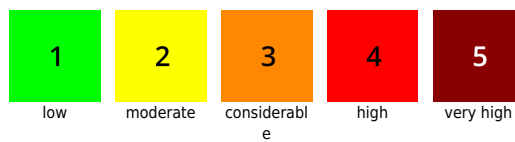
Bayerische Voralpen West, Bayerische Voralpen Mitte, Bayerische Voralpen Ost, Chiemgauer Alpen West, Chiemgauer Alpen Ost, Ammergauer Alpen, Allgäuer Vorberge, Allgäuer Hauptkamm, Werdenfelser Alpen, Berchtesgadener Alpen



Avalanche problems



Danger ratings

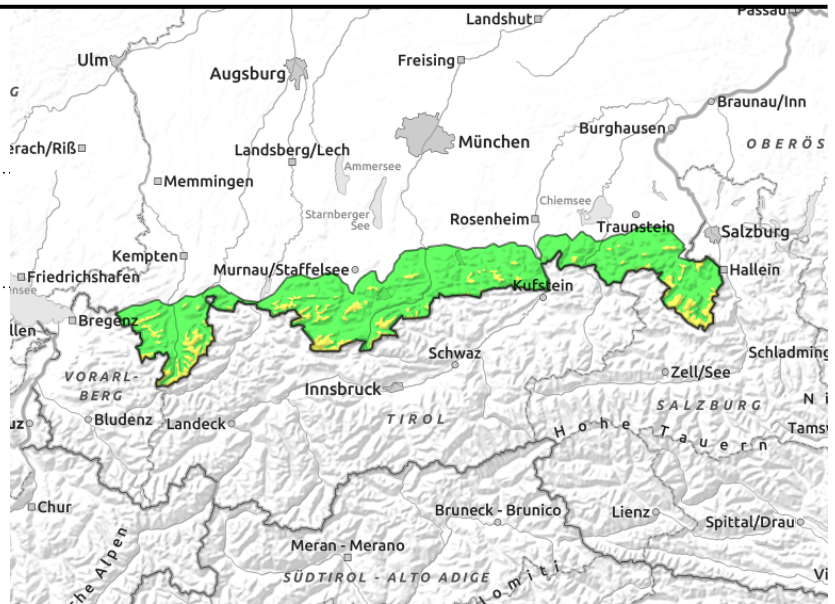
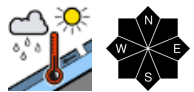


Expositions



15.04.2022

Bayerische Voralpen West, Bayerische Voralpen Mitte, Bayerische Voralpen Ost, Chiemgauer Alpen West, Chiemgauer Alpen Ost, Ammergauer Alpen, Allgäuer Vorberge, Allgäuer Hauptkamm, Werdenfeller Alpen, Berchtesgadener Alpen



In regions where snowfall was heavy, naturally triggered wet snow avalanches possible

Avalanche danger above 1500 m is moderate, below that altitude danger is low. The prevailing problem: wet snow. Even in the morning on steep slopes where there is still sufficient snow, naturally triggered small-to-medium wet snow avalanches are possible. In addition, glide-snow activity is increasing. Glide cracks are red flags of this danger.

Snowpack structure

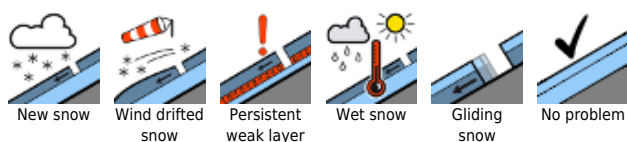
During the night the snowpack cannot regain firmness if there is rainfall, it becomes thoroughly wet up to high altitudes. At intermediate altitudes on south-facing slopes in particular, there is little snow remaining on the slopes. At higher altitudes the crust formed of dust from the Sahara in mid-March is a depository layer atop of which wet slab avalanches can trigger.

Outlook

On Saturday, no significant change is anticipated. Over the holidays, springtime weather: favorable conditions will prevail in morning hours, heightened danger as the day progresses.

Translated by Jeffrey McCabe, www.creativtrans.com

Avalanche problems



Danger ratings



Expositions

