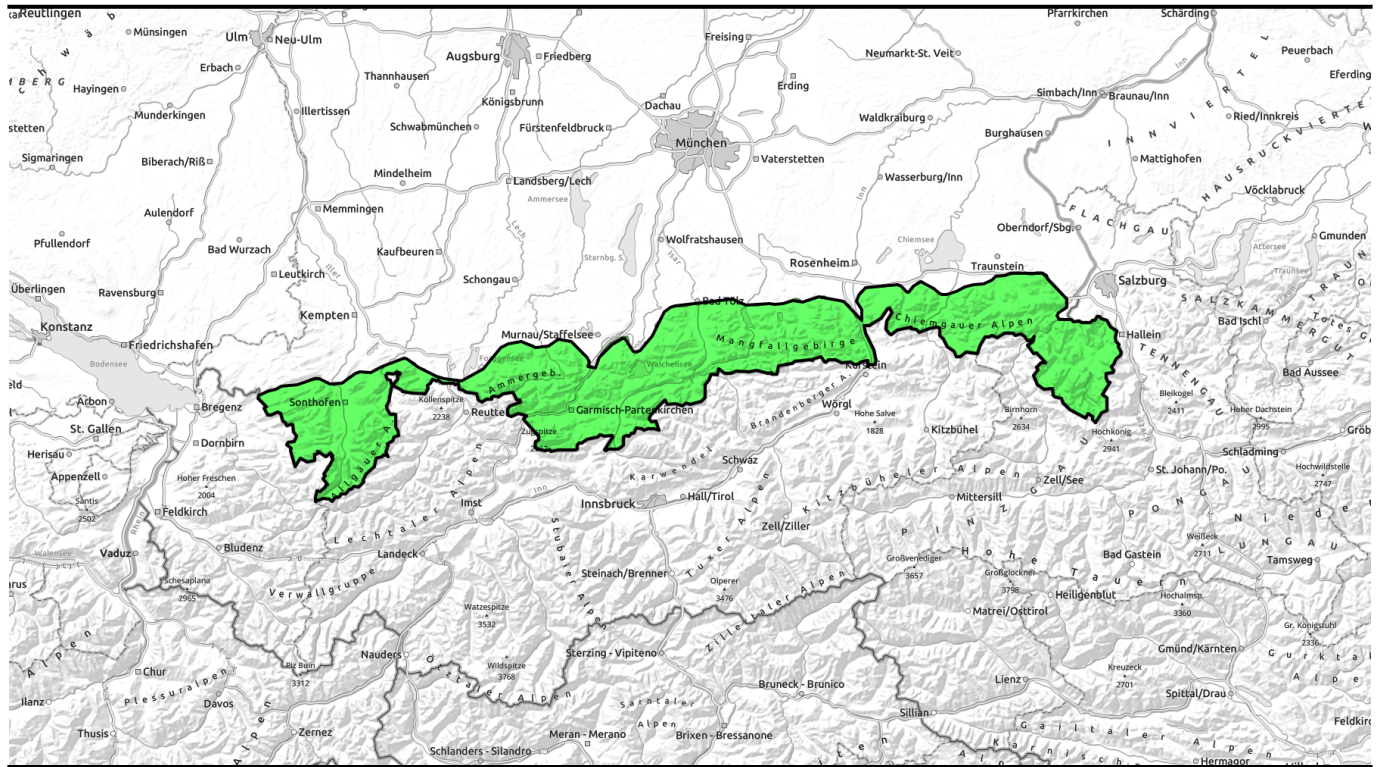




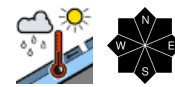
12.04.2022, morning



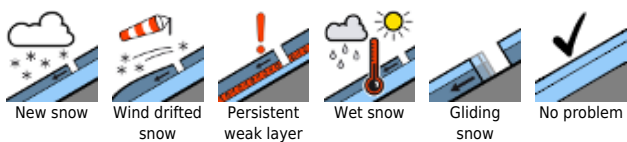
Wet-snow as day progresses, snowdrifts at high altitudes



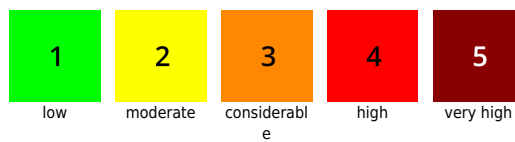
Bayerische Voralpen West, Bayerische Voralpen Mitte, Bayerische Voralpen Ost, Chiemgauer Alpen West, Chiemgauer Alpen Ost, Berchtesgadener Alpen, Werdenfeller Alpen, Ammergauer Alpen, Allgäuer Vorberge, Allgäuer Hauptkamm



Avalanche problems



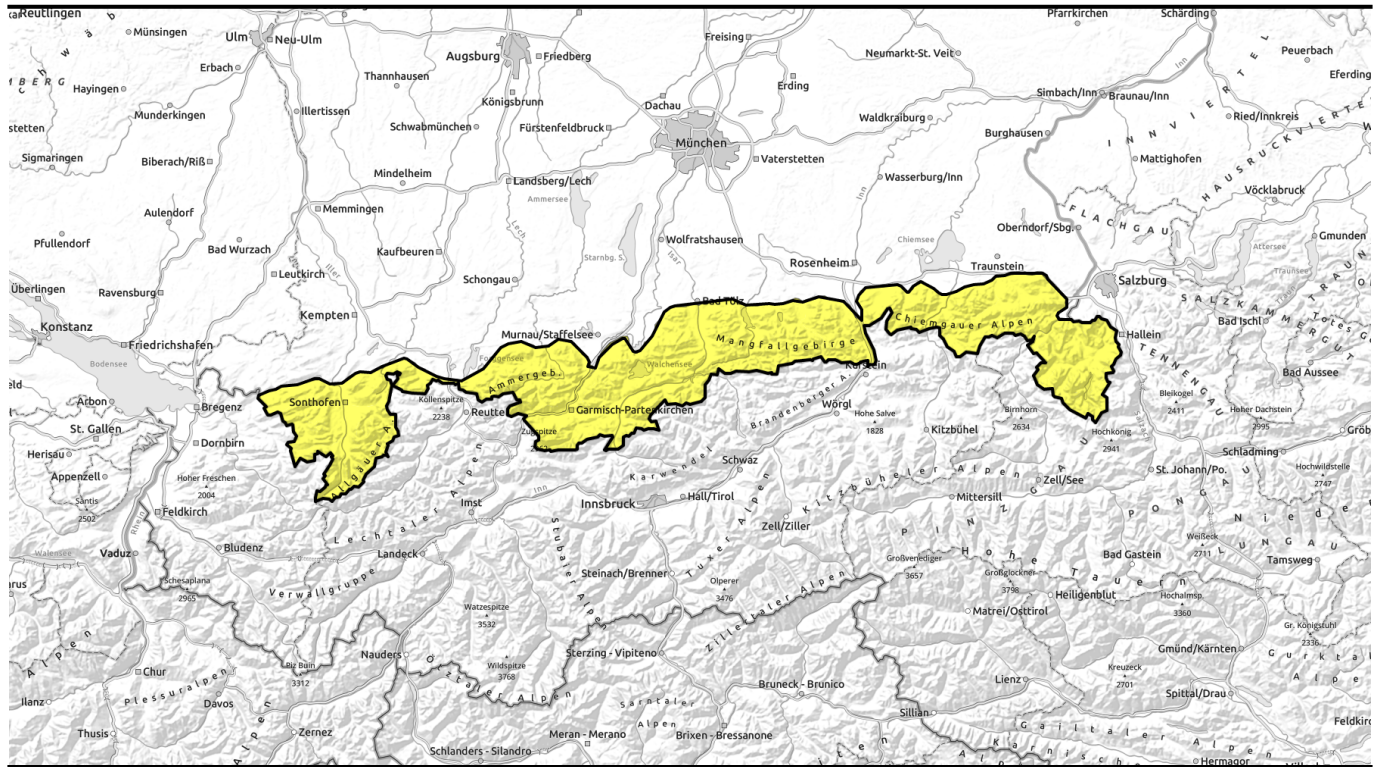
Danger ratings



Expositions



12.04.2022, afternoon



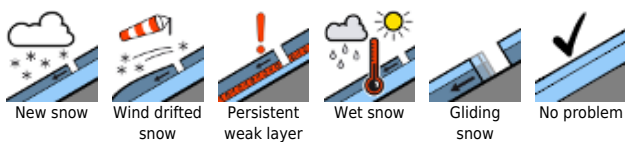
Nassschnee im Tagesverlauf, Triebschnee in den Hochlagen



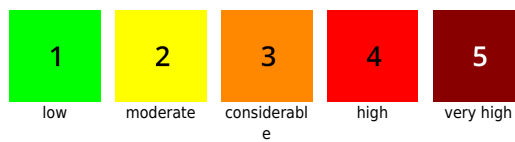
Bayerische Voralpen West, Bayerische Voralpen Mitte, Bayerische Voralpen Ost, Chiemgauer Alpen West, Chiemgauer Alpen Ost, Berchtesgadener Alpen, Werdenfeller Alpen, Ammergauer Alpen, Allgäuer Vorberge, Allgäuer Hauptkamm



Avalanche problems



Danger ratings

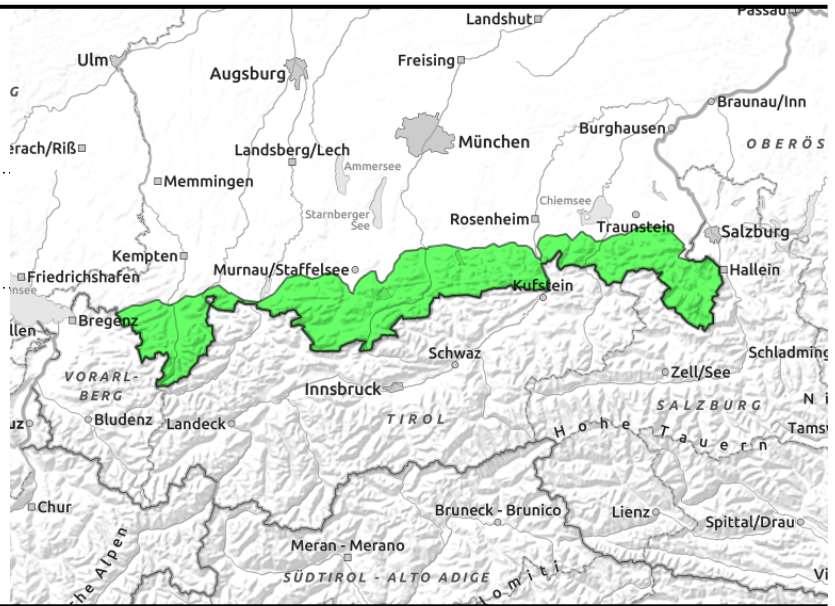
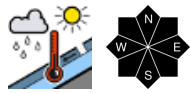


Expositions



12.04.2022, morning

Bayerische Voralpen West, Bayerische Voralpen Mitte, Bayerische Voralpen Ost, Chiemgauer Alpen West, Chiemgauer Alpen Ost, Berchtesgadener Alpen, Werdenfeller Alpen, Ammergauer Alpen, Allgäuer Vorberge, Allgäuer Hauptkamm



Rising danger of wet loose-snow avalanches due to solar radiation

Avalanche danger increases to moderate as the day unfolds. Main problem: wet snow. The snow from the weekend an trigger naturally in extremely steep terrain as small-to-medium sized avalanches due to daytime warming and solar radiation. In addition, particularly in the Allgäu, small-to-medium glide-snow avalanches are possible on steep, smooth grassy slopes. Glide cracks are red flags of this risk. In addition to that, small older snowdrift accumulations at high altitudes can be triggered particularly by large additional loading. Isolated danger zones occur on shady, steel ridgeline slopes. Slab avalanches mostly remain small.

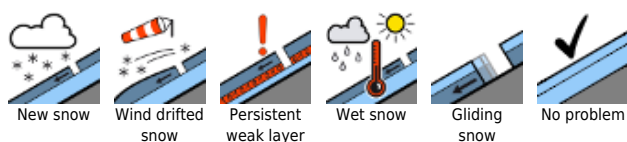
Snowpack structure

During the nocturnal hours in most places, a melt-freeze crust forms which is not capable of bearing loads, then thaws as soon as the sun comes out. The weekend snowfall lies deposited atop a stable old snowpack fundament or on bare ground and becomes wet in the sunshine, which reinforces loose-snow avalanches and gliding snowpack movements. There is little snow up to above intermediate altitudes, sunny slopes are now bare especially in the Prealps. At high altitudes the snowdrifts are rapidly settling and consolidating.

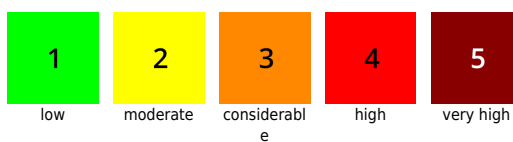
Outlook

In early morning: melt-freeze crusts. As the day progresses: rising danger of wet avalanches.

Avalanche problems



Danger ratings

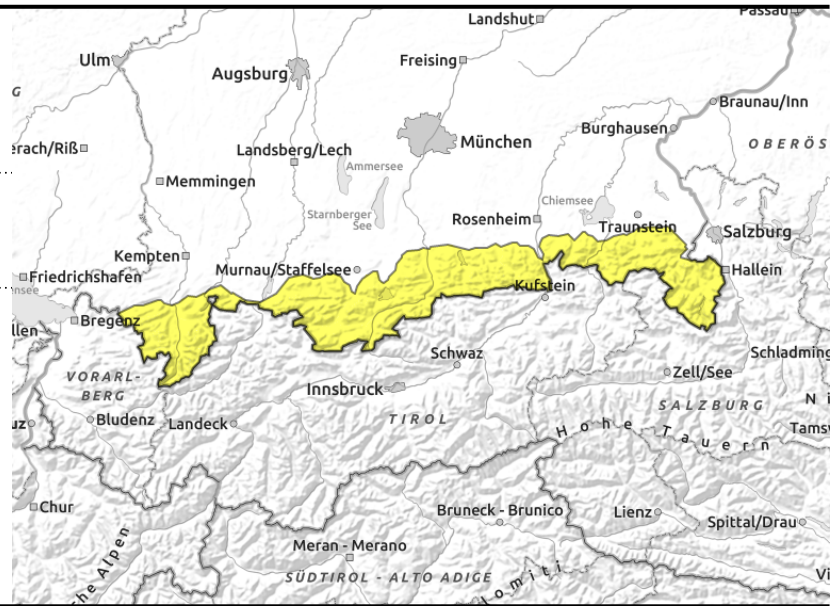
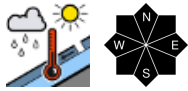


Expositions



12.04.2022, afternoon

Bayerische Voralpen West, Bayerische Voralpen Mitte, Bayerische Voralpen Ost, Chiemgauer Alpen West, Chiemgauer Alpen Ost, Berchtesgadener Alpen, Werdenfeller Alpen, Ammergauer Alpen, Allgäuer Vorberge, Allgäuer Hauptkamm



Rising danger of wet loose-snow avalanches due to solar radiation

Avalanche danger increases to moderate as the day unfolds. Main problem: wet snow. The snow from the weekend an trigger naturally in extremely steep terrain as small-to-medium sized avalanches due to daytime warming and solar radiation. In addition, particularly in the Allgäu, small-to-medium glide-snow avalanches are possible on steep, smooth grassy slopes. Glide cracks are red flags of this risk. In addition to that, small older snowdrift accumulations at high altitudes can be triggered particularly by large additional loading. Isolated danger zones occur on shady, steel ridgeline slopes. Slab avalanches mostly remain small.

Snowpack structure

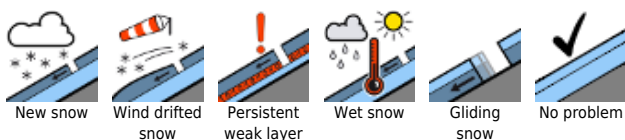
During the nocturnal hours in most places, a melt-freeze crust forms which is not capable of bearing loads, then thaws as soon as the sun comes out. The weekend snowfall lies deposited atop a stable old snowpack fundament or on bare ground and becomes wet in the sunshine, which reinforces loose-snow avalanches and gliding snowpack movements. There is little snow up to above intermediate altitudes, sunny slopes are now bare especially in the Prealps. At high altitudes the snowdrifts are rapidly settling and consolidating.

Outlook

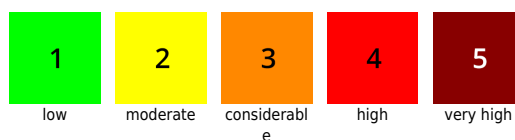
In early morning: melt-freeze crusts. As the day progresses: rising danger of wet avalanches.

Translated by Jeffrey McCabe, www.creativtrans.com

Avalanche problems



Danger ratings



Expositions

