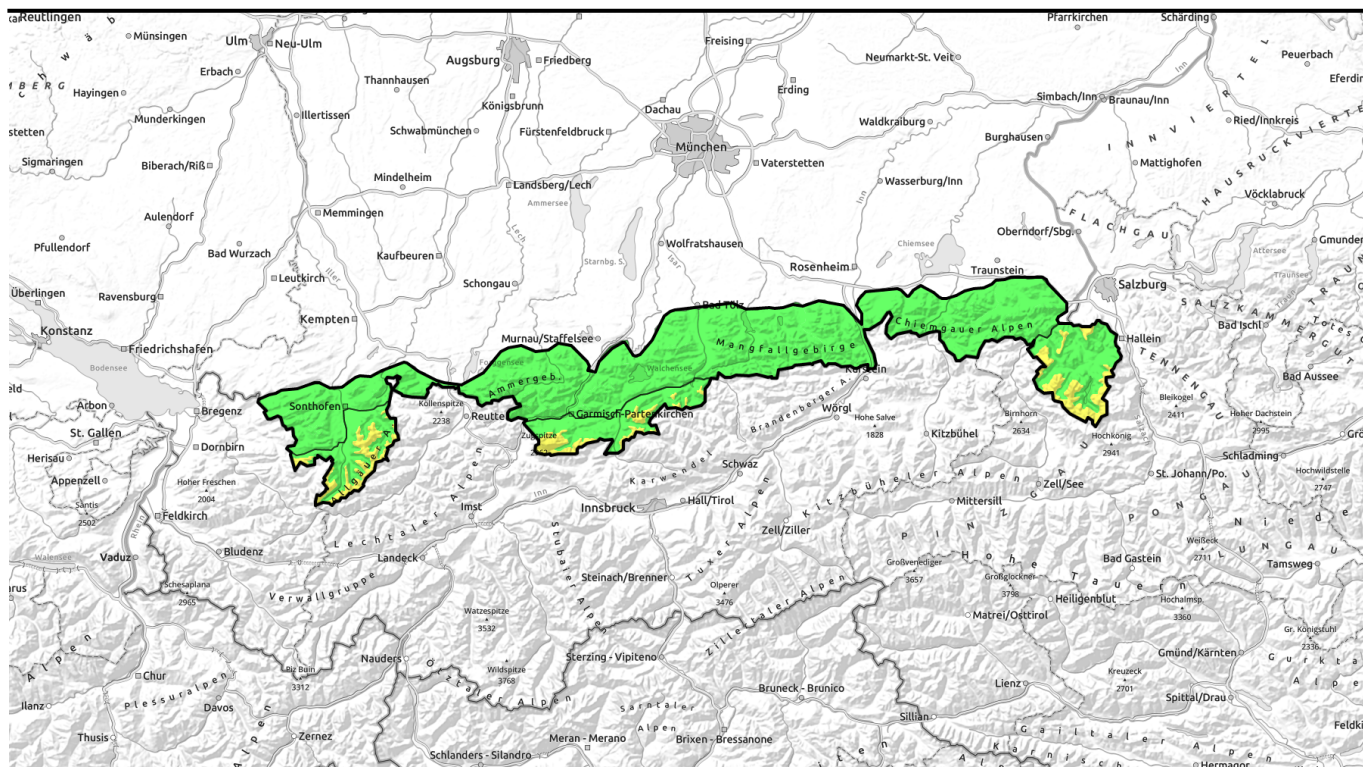




11.04.2022, morning



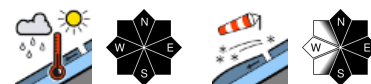
Snowdrifts at high altitude. Loose snow avalanches possible due to warming and sun.



Werdenfeller Alpen, Berchtesgadener Alpen, Allgäuer Hauptkamm



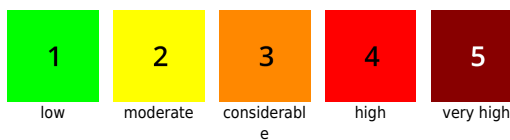
Allgäuer Vorberge, Ammergauer Alpen, Bayerische Voralpen West, Bayerische Voralpen Mitte, Bayerische Voralpen Ost, Chiemgauer Alpen West, Chiemgauer Alpen Ost



Avalanche problems



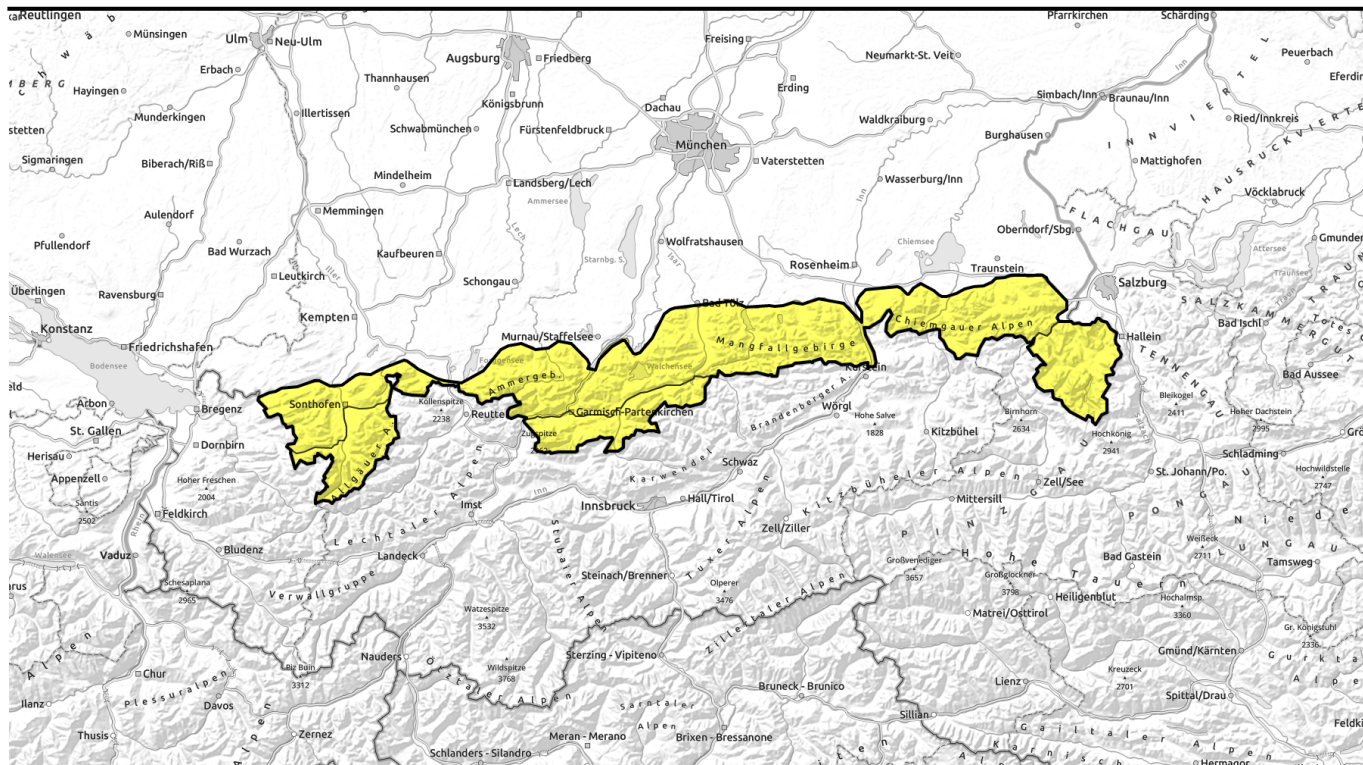
Danger ratings



Expositions



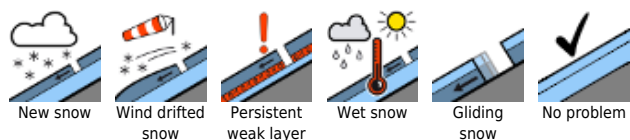
11.04.2022, afternoon



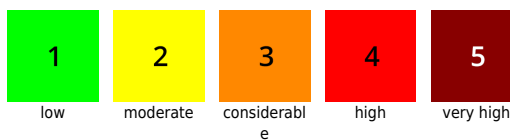
Tribschnee in den Hochlagen; Mit Erwärmung und Sonne sind Lockerschneelawinen möglich.

	Werdenfeller Alpen, Berchtesgadener Alpen, Allgäuer Hauptkamm	
	Allgäuer Vorberge, Ammergauer Alpen, Bayerische Voralpen West, Bayerische Voralpen Mitte, Bayerische Voralpen Ost, Chiemgauer Alpen West, Chiemgauer Alpen Ost	

Avalanche problems



Danger ratings

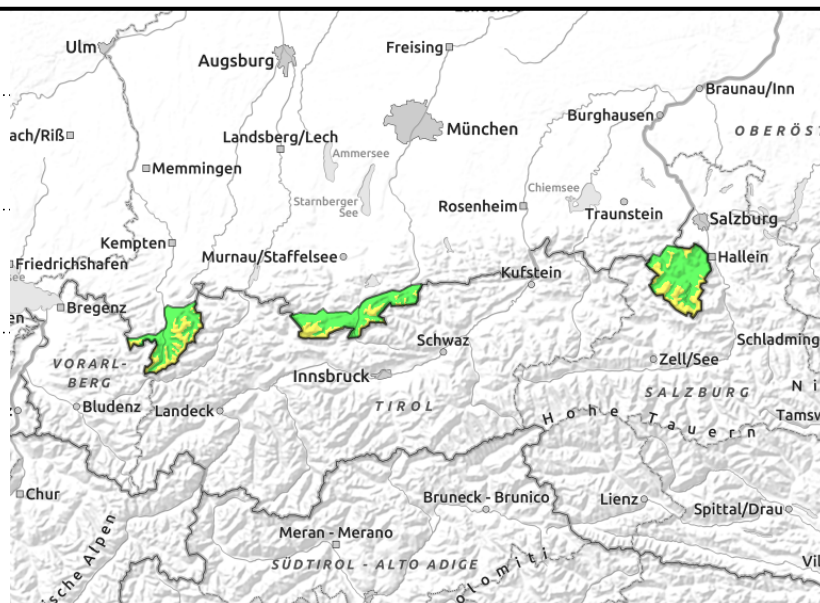
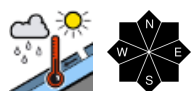
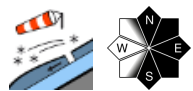


Expositions



11.04.2022, morning

Werdenfeller Alpen, Berchtesgadener Alpen, Allgäuer Hauptkamm



Beware of small to medium-sized loose snow avalanches, in particular in the afternoon.

Avalanche danger above 2000m is moderate; below it rises from low to moderate during the course of the day. Fresh snowdrift accumulations are the main problem. One single winter sports enthusiast can trigger small to medium-sized slab avalanches, in particular on some steep high-altitude slopes adjacent to ridgelines in N/E/S aspects as well as in freshly wind-loaded gullies and bowls. Frequency and size of the danger zones increase with ascending altitude.

Mainly in the afternoon new snow can also release spontaneously or be triggered by a sole person engaged in wintersports as wet loose snow avalanches in steep rocky terrain due to warming and solar radiation. Glide snow avalanches are still possible in the Allgäu region on smooth steep grass-covered slopes. Avalanches are small to medium-sized.

Snowpack structure

Over the last few days, small-scale snowdrifts have accumulated that can still be trigger-sensitive, in particular at high altitude. Apart from that the thoroughly wet old snowpack is blanketed by 10-30cm of new snow. As a consequence of mild temperatures and sun the new snow has started to become wet and bonding deteriorates. At intermediate altitudes the snowpack is frequently wet down to the ground which promotes gliding movements of the snow masses. Below 1500 m, the ground is becoming increasingly bare on the sunny side.

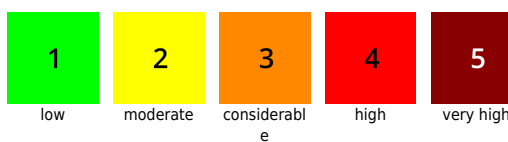
Outlook

The weather will stay sunny and mild, therefore, the daytime loose snow avalanche danger cycle will persist.

Avalanche problems



Danger ratings

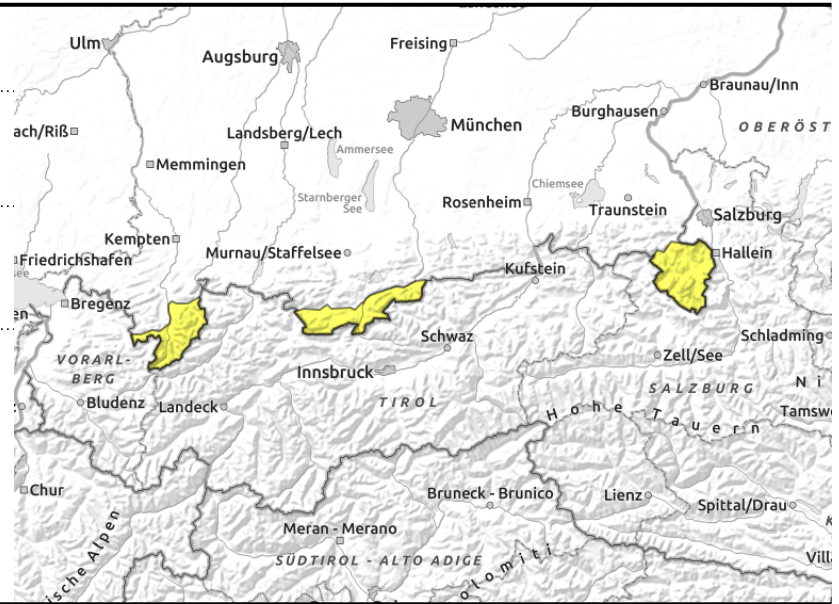
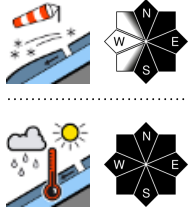


Expositions



11.04.2022, afternoon

Werdenfeller Alpen, Berchtesgadener Alpen, Allgäuer Hauptkamm



Beware of small to medium-sized loose snow avalanches, in particular in the afternoon.

Avalanche danger above 2000m is moderate; below it rises from low to moderate during the course of the day. Fresh snowdrift accumulations are the main problem. One single winter sports enthusiast can trigger small to medium-sized slab avalanches, in particular on some steep high-altitude slopes adjacent to ridgelines in N/E/S aspects as well as in freshly wind-loaded gullies and bowls. Frequency and size of the danger zones increase with ascending altitude.

Mainly in the afternoon new snow can also release spontaneously or be triggered by a sole person engaged in wintersports as wet loose snow avalanches in steep rocky terrain due to warming and solar radiation. Glide snow avalanches are still possible in the Allgäu region on smooth steep grass-covered slopes. Avalanches are small to medium-sized.

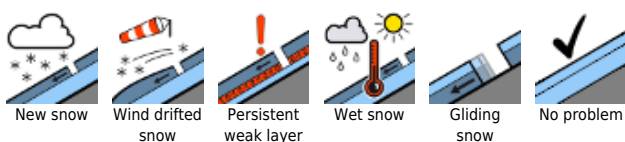
Snowpack structure

Over the last few days, small-scale snowdrifts have accumulated that can still be trigger-sensitive, in particular at high altitude. Apart from that the thoroughly wet old snowpack is blanketed by 10-30cm of new snow. As a consequence of mild temperatures and sun the new snow has started to become wet and bonding deteriorates. At intermediate altitudes the snowpack is frequently wet down to the ground which promotes gliding movements of the snow masses. Below 1500 m, the ground is becoming increasingly bare on the sunny side.

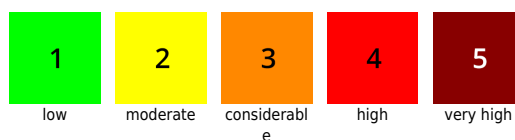
Outlook

The weather will stay sunny and mild, therefore, the daytime loose snow avalanche danger cycle will persist.

Avalanche problems



Danger ratings

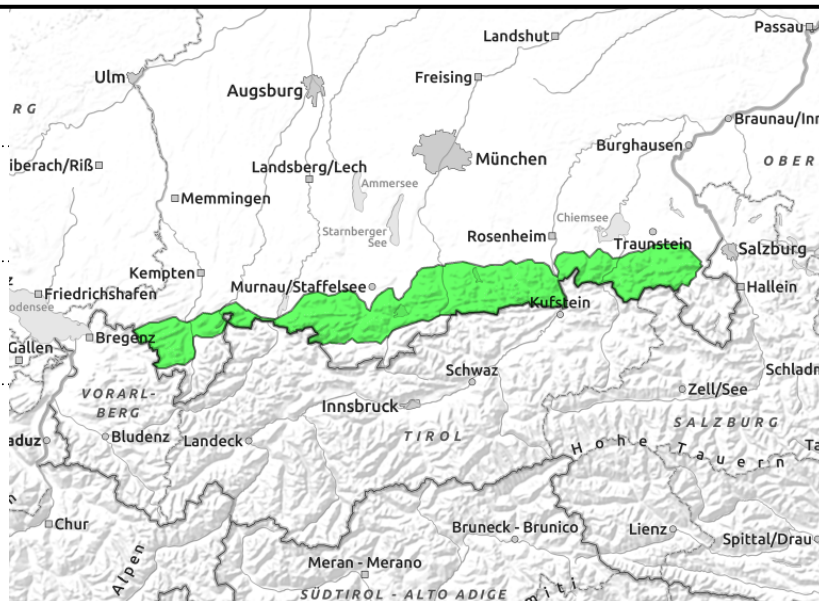
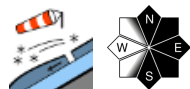
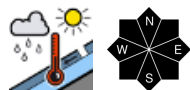


Expositions



11.04.2022, morning

Allgäuer Vorberge, Ammergauer Alpen, Bayerische Voralpen West, Bayerische Voralpen Mitte, Bayerische Voralpen Ost, Chiemgauer Alpen West, Chiemgauer Alpen Ost



Beware of small to medium-sized loose snow avalanches in particular in the afternoon.

Avalanche danger rises from low to moderate during the daytime. Main problem: wet-snow. Mainly in the afternoon new snow can release spontaneously or be triggered by a sole person engaged in wintersports as small to medium-sized wet loose snow avalanches in steep rocky terrain due to warming and solar radiation. Especially in Allgäu, small to medium-sized glide snow avalanches are possible on smooth steep grass-covered slopes.

In addition, small-scale snowdrift accumulations can sometimes be triggered by a single skier. Danger zones are found in steep ridgeline terrain in N/E/S aspects as well as in freshly wind-loaded gullies and bowls. Avalanches tend to be small.

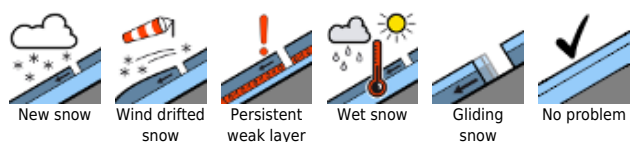
Snowpack structure

In the last few days, small-scale snowdrifts have accumulated which are partly still prone to triggering. Apart from that the old snowpack is blanketed by 10-30cm of new snow. As a consequence of mild temperatures and sun the new snow has started to become wet and bonding deteriorates. At intermediate altitudes the snowpack is frequently wet down to the ground which promotes gliding movements of the snow masses. Below 1500 m, the ground is becoming increasingly bare on the sunny side.

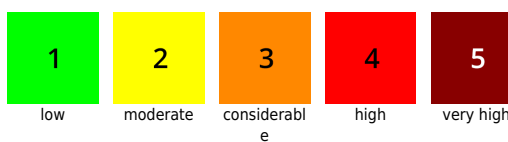
Outlook

The weather will stay sunny and mild, therefore, the daytime loose snow avalanche danger cycle will persist.

Avalanche problems



Danger ratings

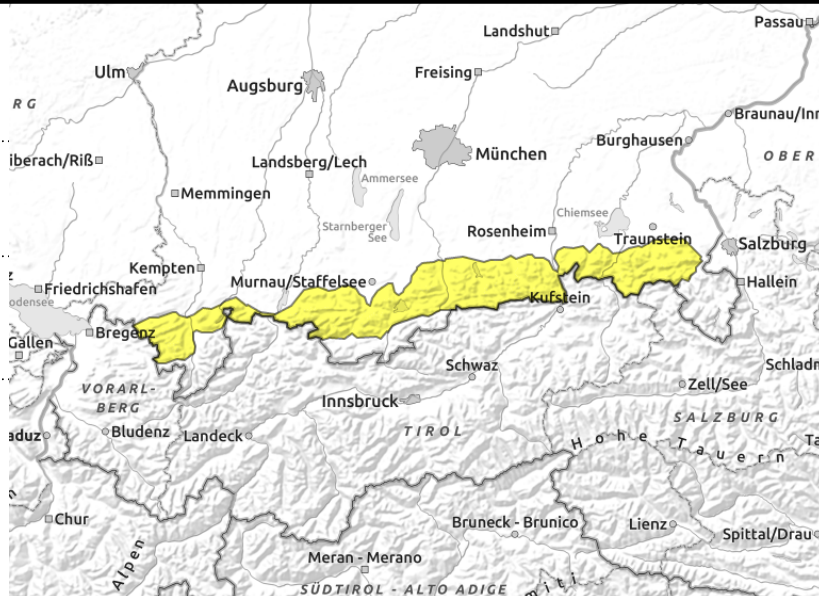
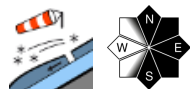
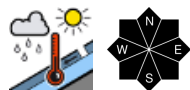


Expositions



11.04.2022, afternoon

Allgäuer Vorberge, Ammergauer Alpen, Bayerische Voralpen West, Bayerische Voralpen Mitte, Bayerische Voralpen Ost, Chiemgauer Alpen West, Chiemgauer Alpen Ost



Beware of small to medium-sized loose snow avalanches in particular in the afternoon.

Avalanche danger rises from low to moderate during the daytime. Main problem: wet-snow. Mainly in the afternoon new snow can release spontaneously or be triggered by a sole person engaged in wintersports as small to medium-sized wet loose snow avalanches in steep rocky terrain due to warming and solar radiation. Especially in Allgäu, small to medium-sized glide snow avalanches are possible on smooth steep grass-covered slopes.

In addition, small-scale snowdrift accumulations can sometimes be triggered by a single skier. Danger zones are found in steep ridgeline terrain in N/E/S aspects as well as in freshly wind-loaded gullies and bowls. Avalanches tend to be small.

Snowpack structure

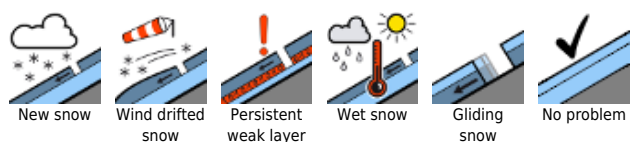
In the last few days, small-scale snowdrifts have accumulated which are partly still prone to triggering. Apart from that the old snowpack is blanketed by 10-30cm of new snow. As a consequence of mild temperatures and sun the new snow has started to become wet and bonding deteriorates. At intermediate altitudes the snowpack is frequently wet down to the ground which promotes gliding movements of the snow masses. Below 1500 m, the ground is becoming increasingly bare on the sunny side.

Outlook

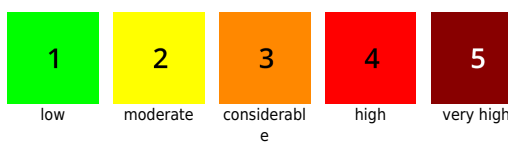
The weather will stay sunny and mild, therefore, the daytime loose snow avalanche danger cycle will persist.

Translated by Jeffrey McCabe, www.creativtrans.com

Avalanche problems



Danger ratings



Expositions

