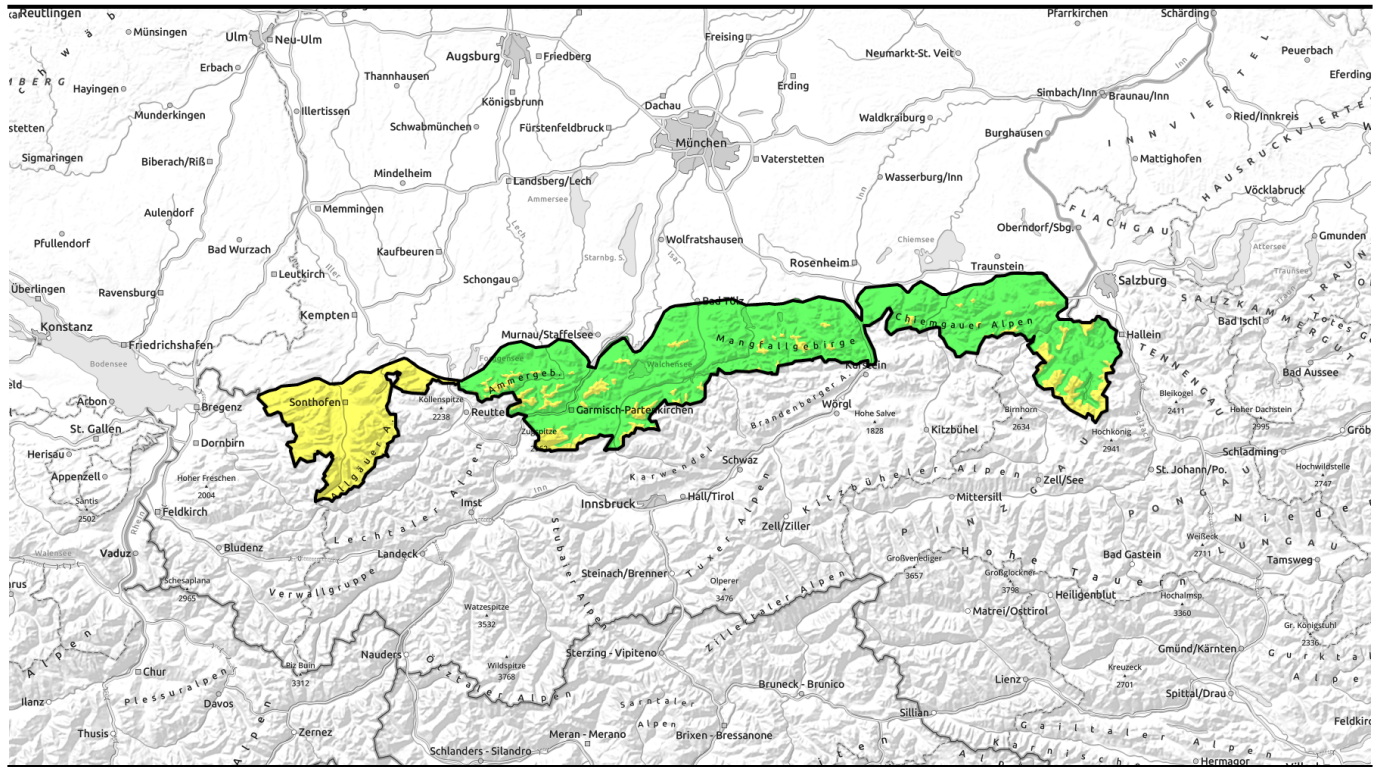


09.04.2022

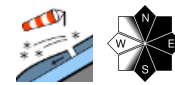


Descending snowpack level + winds = fresh snowdrifts



forestline

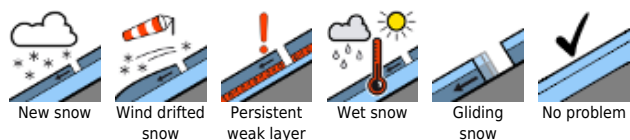
Ammergauer Alpen, Bayerische Voralpen West, Bayerische Voralpen Mitte, Bayerische Voralpen Ost, Werdenfelser Alpen, Chiemgauer Alpen West, Chiemgauer Alpen Ost, Berchtesgadener Alpen



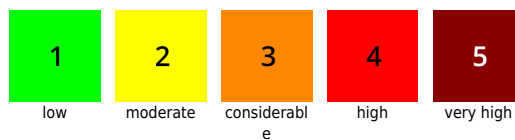
Allgäuer Hauptkamm, Allgäuer Vorberge



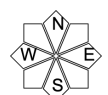
Avalanche problems



Danger ratings

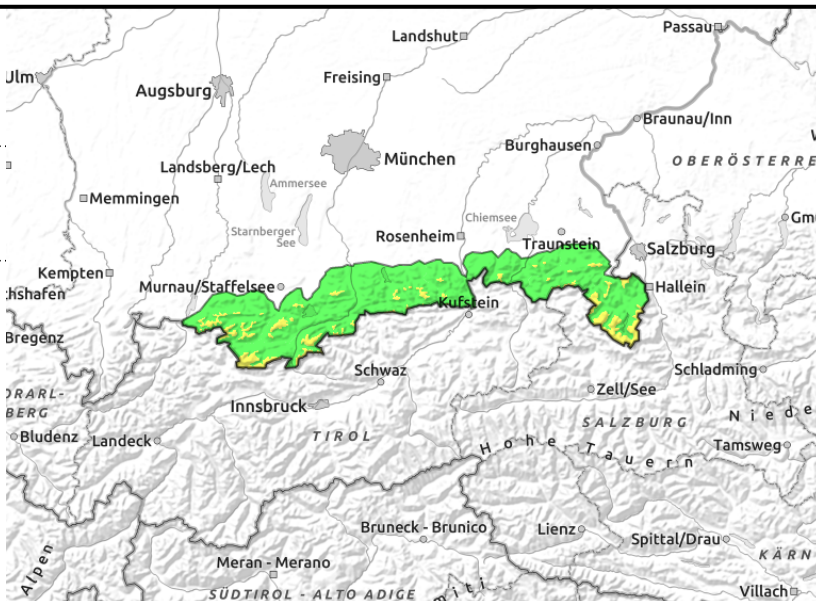
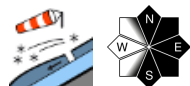


Expositions



09.04.2022

Ammergauer Alpen, Bayerische Voralpen West, Bayerische Voralpen Mitte, Bayerische Voralpen Ost, Werdenfeller Alpen, Chiemgauer Alpen West, Chiemgauer Alpen Ost, Berchtesgadener Alpen



Snowdrift accumulations and loose snow slides both require attentiveness

Avalanche danger above the treeline is moderate, below that altitude danger is low. Fresh snowdrift accumulations are the main problem. One single winter sports enthusiast can, on ridgelines, on some steep slopes in N/E/S aspects, in freshly wind-loaded gullies and bowls, and behind protruberances, trigger small to medium sized avalanches. Frequency and size of the danger zones increase with ascending altitude.

In addition, the fresh snow can release naturally as small-to-medium loose-snow avalanches in steep rocky terrain. Isolated wet-snow and glide-snow avalanches are still possible.

Snowpack structure

A slightly cloudy sky with storm strength winds and further precipitation, with the focus in western regions, is expected tonight. Snowfall level will descend on Saturday down to 700 m. Especially above the treeline, fresh snowdrift accumulations will be generated, often deposited atop soft layers and prone to triggering. Beneath the fresh snow and drifts at high altitudes, in addition, a thin layer of faceted crystals can form. At intermediate altitudes the old snowpack is thoroughly wet. In addition, the snow is becoming wet from the warm earth, it could begin to glide as a single mass. Below 1500m the slopes are largely bare.

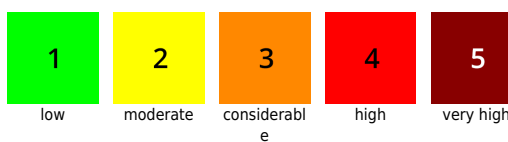
Outlook

Also on Sunday, cool and windy. No significant change in avalanche danger levels is expected.

Avalanche problems



Danger ratings

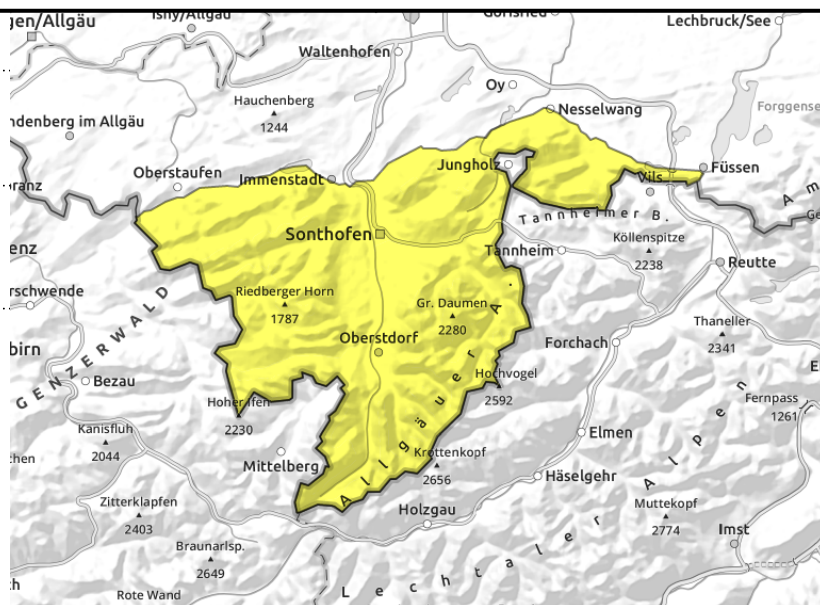
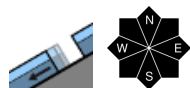
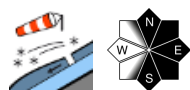


Expositions



09.04.2022

Allgäuer Hauptkamm, Allgäuer Vorberge



Apart from drifts, loose-snow and glide-snow avalanches require attentiveness

Avalanche danger is moderate. Fresh snowdrift accumulations above the treeline are the main problem. One single winter sports enthusiast can, on ridgelines, on some steep slopes in N/E/S aspects, in freshly wind-loaded gullies and bowls, and behind protruberances, trigger small to medium sized avalanches. Frequency and size of the danger zones increase with ascending altitude. In addition, the fresh snow can release naturally as small-to-medium loose-snow avalanches in steep rocky terrain. Isolated wet-snow and glide-snow avalanches are still possible.

Snowpack structure

In the Allgäu, after a slightly cloudy sky with storm strength winds and further precipitation (10-20 cm). Snowfall level will descend on Saturday down to 700 m. Especially above the treeline, fresh snowdrift accumulations will be generated, often deposited atop soft layers and prone to triggering. Beneath the fresh snow and drifts at high altitudes, in addition, a thin layer of faceted crystals can form. At intermediate altitudes the old snowpack is thoroughly wet. In addition, the snow is becoming wet from the warm earth, it could begin to glide as a single mass. Below 1500m the slopes are largely bare.

Outlook

Also on Sunday, cool and windy. No significant change in avalanche danger levels is expected.

Translated by Jeffrey McCabe, www.creativtrans.com

Avalanche problems



Danger ratings



Expositions

