

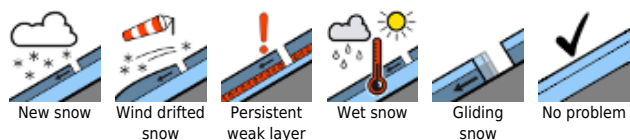
## Wet-snow avalanches at intermediate altitudes. Fresh snowdrifts at high altitudes.



Allgäuer Vorberge, Allgäuer Hauptkamm, Ammergauer Alpen, Werdenfelser Alpen, Bayerische Voralpen West, Bayerische Voralpen Mitte, Bayerische Voralpen Ost, Chiemgauer Alpen West, Chiemgauer Alpen Ost, Berchtesgadener Alpen



### Avalanche problems



### Danger ratings

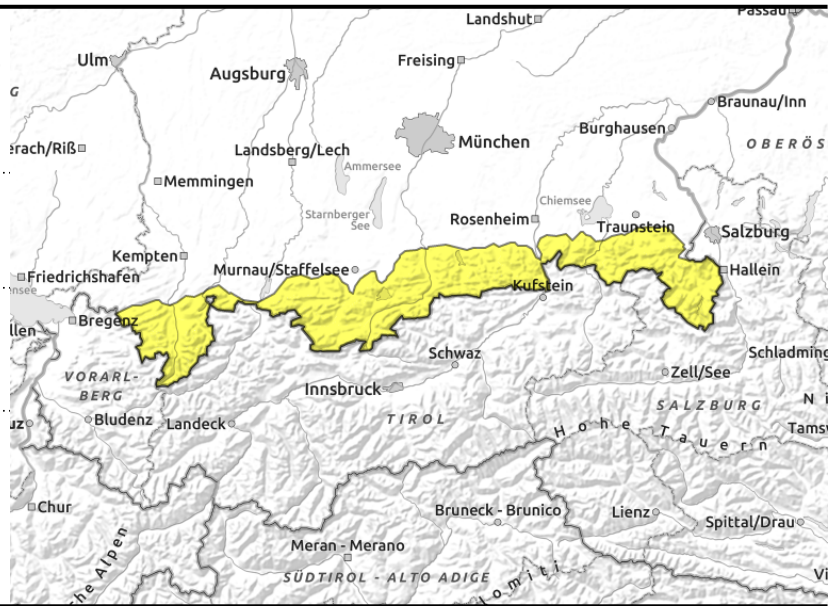
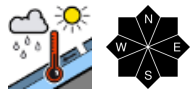
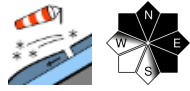


### Expositions



**06.04.2022**

**Allgäuer Vorberge, Allgäuer Hauptkamm, Ammergauer Alpen, Werdenfelser Alpen, Bayerische Voralpen West, Bayerische Voralpen Mitte, Bayerische Voralpen Ost, Chiemgauer Alpen West, Chiemgauer Alpen Ost, Berchtesgadener Alpen**



## Wet-snow avalanches are possible up to high altitudes

Avalanche danger in the Bavarian Alps is moderate. At high altitudes the fresh snowdrift accumulations are the main problem. One sole skier can trigger a slab avalanche in steep ridgeline terrain in NW/N/SE aspects and in wind-loaded gullies and bowls. Particularly at high altitudes, the triggered avalanches can release enough snow to bury a person.

Apart from that, during the course of the day the danger of moist and wet loose-snow and glide-snow avalanches will increase. In the afternoon, naturally triggering wet-snow avalanches can be expected up to nearly 2000 m. On shady slopes where snowfall has been heaviest, these can reach medium size.

### Snowpack structure

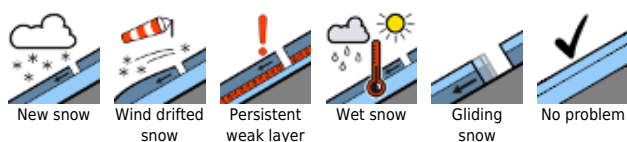
On Tuesday night, the Bavarian Alps will get some fresh snow (up to 10 cm) above 1600 m. At higher altitudes in exposed ridgeline and summit areas, strong-velocity westerly winds will generate fresh snowdrift accumulations which are trigger-sensitive. In addition, the layer of dust from the Sahara is a potential weak layer, especially at high altitudes. At low altitudes, rainfall will set in tomorrow and the snowfall level will ascend. Due to mild temperatures and rain seepage, the snowpack will become weakened on the surface. In addition, the snow is becoming wet from the warm earth, it could begin to glide as a single mass.

### Outlook

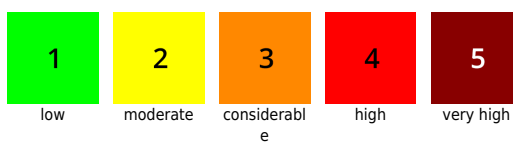
Wet snow is becoming a problem even at high altitude.

Translated by Jeffrey McCabe, [www.creativtrans.com](http://www.creativtrans.com)

#### Avalanche problems



#### Danger ratings



#### Expositions

