

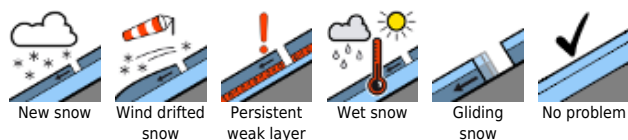
Ascending snowfall level during daytime. Snowpack getting wetter.



Allgäuer Vorberge, Allgäuer Hauptkamm, Ammergauer Alpen, Werdenfeller Alpen, Bayerische Voralpen West, Bayerische Voralpen Mitte, Bayerische Voralpen Ost, Chiemgauer Alpen West, Chiemgauer Alpen Ost, Berchtesgadener Alpen



Avalanche problems



Danger ratings

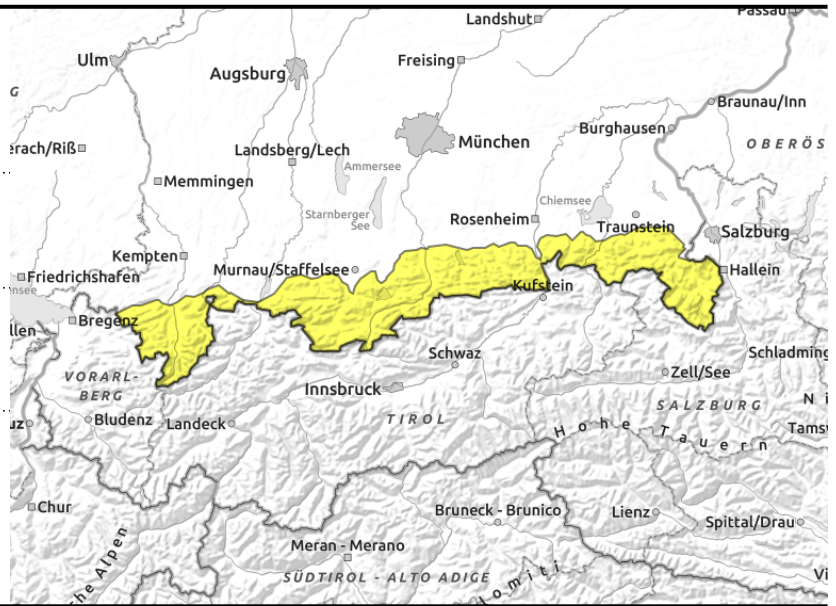
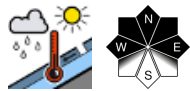
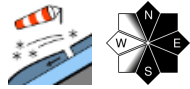


Expositions



05.04.2022

Allgäuer Vorberge, Allgäuer Hauptkamm, Ammergauer Alpen, Werdenfelser Alpen, Bayerische Voralpen West, Bayerische Voralpen Mitte, Bayerische Voralpen Ost, Chiemgauer Alpen West, Chiemgauer Alpen Ost, Berchtesgadener Alpen



Heed freshly generated snowdrifts

Avalanche danger in the Bavarian Alps is moderate. At high altitudes the fresh snowdrift accumulations are the main problem. One sole skier can trigger a slab avalanche in steep ridgeline terrain in N/W/S aspects and in wind-loaded gullies and bowls. Particularly at high altitudes, the triggered avalanches can release enough snow to bury a person.

Apart from that, during the course of the day the danger of moist and wet loose-snow and glide-snow avalanches will increase. In the afternoon, naturally triggering wet-snow avalanches can be expected up to nearly 2000 m. On shady slopes where snowfall has been heaviest, these can reach medium size.

Snowpack structure

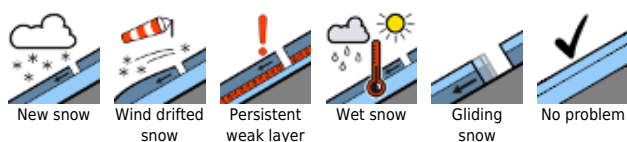
Westerly winds are rising, will transport the loose snow to exposed ridgeline and summit zones. Thereby fresh snowdrift accumulations will be generated, deposited atop the loose layers of snow and be prone to triggering. In addition, the layer of dust from the Sahara is a potential weak layer, especially at high altitudes. At low altitudes, rainfall will set in tomorrow and the snowfall level will ascend. Due to mild temperatures and rain seepage, the snowpack will become weakened on the surface. In addition, the snow is becoming wet from the warm earth, it could begin to glide as a single mass.

Outlook

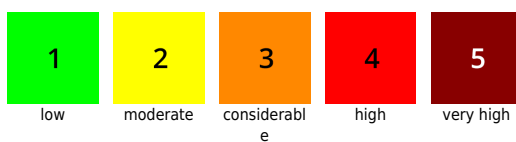
Wet snow is becoming a problem even at high altitude.

Translated by Jeffrey McCabe, www.creativtrans.com

Avalanche problems



Danger ratings



Expositions

