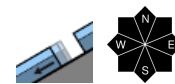


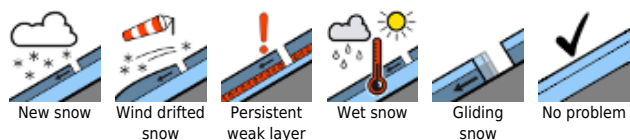
## Favorable avalanche situation with some new snow up in the mountains.



Allgäuer Vorberge, Ammergauer Alpen, Bayerische Voralpen West, Bayerische Voralpen Mitte, Bayerische Voralpen Ost, Chiemgauer Alpen West, Chiemgauer Alpen Ost, Allgäu Hauptkamm, Werdenfeller Alpen, Berchtesgadener Alpen



### Avalanche problems



### Danger ratings

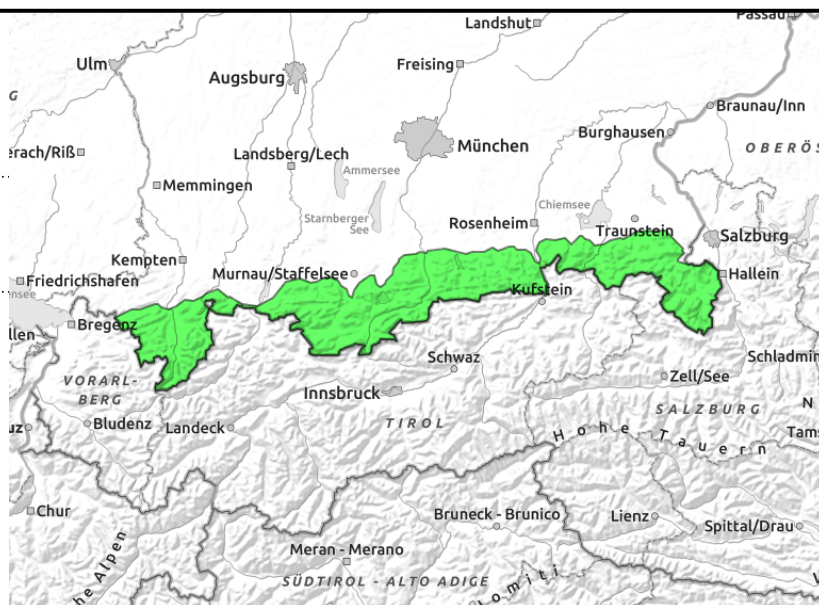
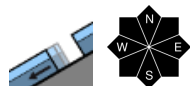


### Expositions



**31.03.2022**

**Allgäuer Vorberge, Ammergauer Alpen, Bayerische Voralpen West, Bayerische Voralpen Mitte, Bayerische Voralpen Ost, Chiemgauer Alpen West, Chiemgauer Alpen Ost, Allgäuer Hauptkamm, Werdenfelser Alpen, Berchtesgadener Alpen**



## Heed danger of taking a fall on hard old snowpack surface.

Avalanche danger in the Bavarian Alps is low. Isolated small to medium-sized glide snow avalanches are possible on steep grass-covered slopes and in sparsely wooded zones with still sufficient snow. Glide cracks are indicators of danger.

### Snowpack structure

Above around 1500m a few centimeters of new snow will fall without major wind impact during Thursday night and on Friday during the day as temperatures are dropping. The depths of the old snowpack are below average but stable; it is frequently wet down to the ground. On sunny slopes the ground is almost bare up to about 1500m.

### Outlook

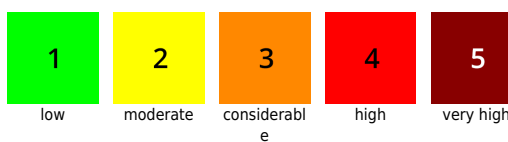
Due to dropping temperatures, some new snow and intensifying winds the avalanche danger at higher altitudes will increase somewhat.

Translated by Jeffrey McCabe, [www.creativtrans.com](http://www.creativtrans.com)

#### Avalanche problems



#### Danger ratings



#### Expositions

