

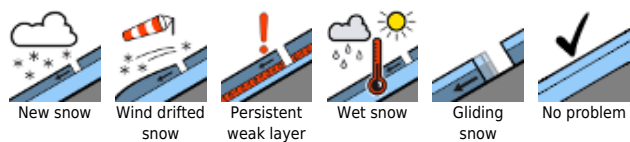
Wet snow problem at all altitudes.



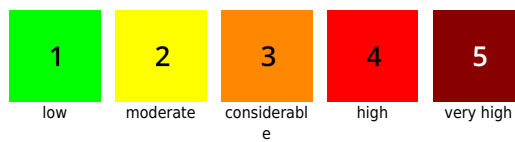
Allgäuer Vorberge, Ammergauer Alpen, Bayerische Voralpen West, Bayerische Voralpen Mitte, Bayerische Voralpen Ost, Chiemgauer Alpen West, Chiemgauer Alpen Ost, Allgäuer Hauptkamm, Werdenfeller Alpen, Berchtesgadener Alpen



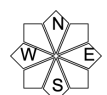
Avalanche problems



Danger ratings

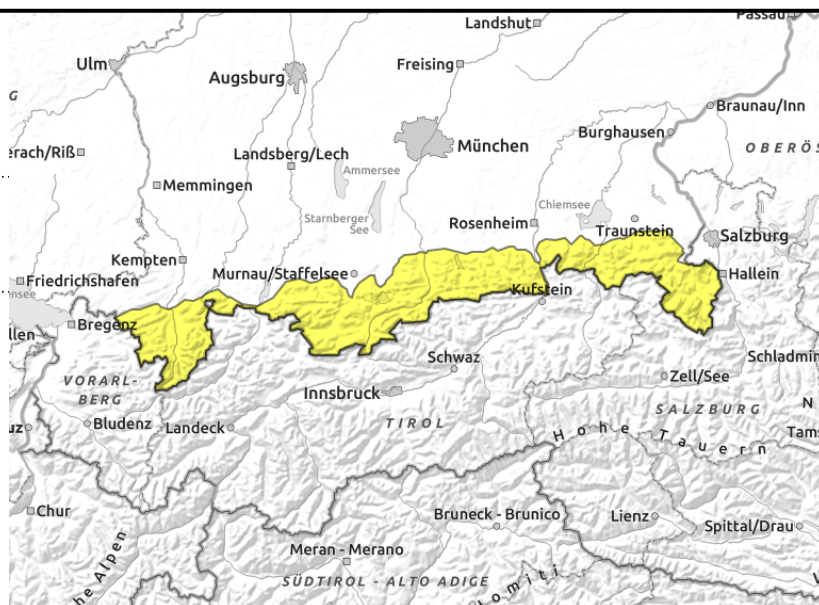
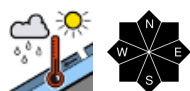


Expositions



30.03.2022

Allgäuer Vorberge, Ammergauer Alpen, Bayerische Voralpen West, Bayerische Voralpen Mitte, Bayerische Voralpen Ost, Chiemgauer Alpen West, Chiemgauer Alpen Ost, Allgäuer Hauptkamm, Werdenfeller Alpen, Berchtesgadener Alpen



Possibility of wet loose snow and glide snow avalanches.

Avalanche danger in the Bavarian Alps is moderate. Wet snow is a problem. Small and medium-sized wet loose snow avalanches can release naturally or can be triggered by individuals engaged in wintersports in steep terrain with sufficient snow at all altitudes and in all aspects. Additionally, medium-sized glide snow avalanches can release on steep slopes with smooth ground.

Snowpack structure

A dense cloud cover during the night prevents the formation of a melt-freeze crust capable of bearing loads. Due to mild temperatures and the onset of rain the snowpack is becoming increasingly wet down to the ground. All in all there is little snow in the Bavarian Alps; on sunny slopes the ground is almost bare up to 1500m.

Outlook

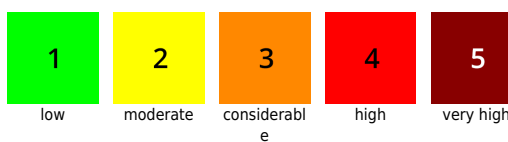
As precipitations intensify and temperatures drop the avalanche danger situation will shift toward the problem of new snow on Thursday and Friday.

Translated by Jeffrey McCabe, www.creativtrans.com

Avalanche problems



Danger ratings



Expositions

