

Springtime conditions: slight daytime avalanche danger cycle.



Allgäuer Vorberge, Ammergauer Alpen, Bayerische Voralpen West, Bayerische Voralpen Mitte, Bayerische Voralpen Ost, Chiemgauer Alpen West, Chiemgauer Alpen Ost, Allgäuer Hauptkamm, Werdenfeller Alpen, Berchtesgadener Alpen



Avalanche problems



Danger ratings



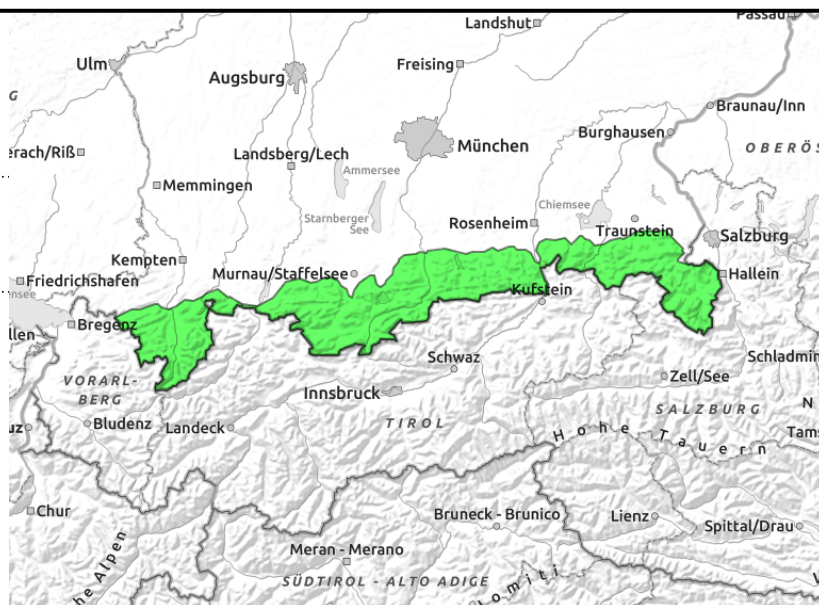
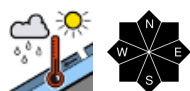
Expositions





29.03.2022

Allgäuer Vorberge, Ammergauer Alpen, Bayerische Voralpen West, Bayerische Voralpen Mitte, Bayerische Voralpen Ost, Chiemgauer Alpen West, Chiemgauer Alpen Ost, Allgäuer Hauptkamm, Werdenfelser Alpen, Berchtesgadener Alpen



Caution: danger of taking a fall on an encrusted snow cover surface in the morning as well as possibility of collapsing cornices!

Avalanche danger in the Bavarian Alps is low. Wet snow is a problem. In extremely steep intermediate altitude terrain isolated small wet loose snow avalanches can trigger naturally during the course of the day. In addition, medium-sized glide snow avalanches can release on steep slopes with smooth ground.

Snowpack structure

In early morning the snowpack surface is encrusted and stable. As a consequence of mild temperatures and cloudiness the melt-freeze crust softens as the day passes. The result is a loss of superficial bonding. The snowpack gradually becomes thoroughly moist and in many places has become wet at ground level. Snowpack depths are below average for this juncture of the season; on sunny slopes there is hardly any snow left up to 1500.

Outlook

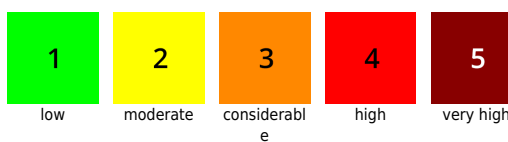
On Wednesday the avalanche danger will not change significantly.

Translated by Jeffrey McCabe, www.creativtrans.com

Avalanche problems



Danger ratings



Expositions

