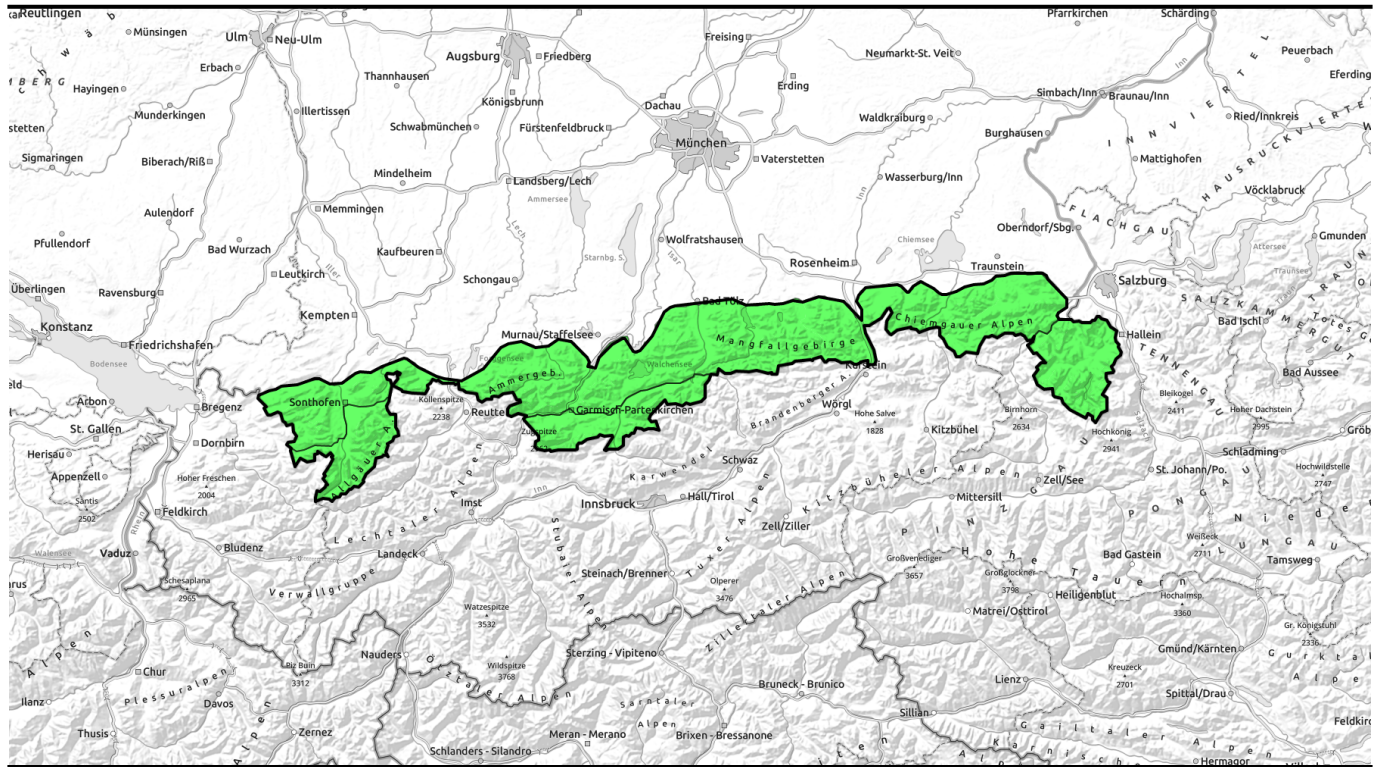


28.03.2022, morning



Springtime conditions, i.e. favorable conditions in the morning and daytime avalanche danger cycle. Caution: cornices can collapse.



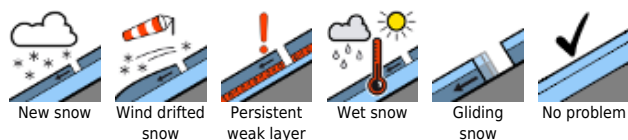
Allgäuer Vorberge, Ammergauer Alpen, Bayerische Voralpen West, Bayerische Voralpen Mitte, Bayerische Voralpen Ost, Chiemgauer Alpen West, Chiemgauer Alpen Ost



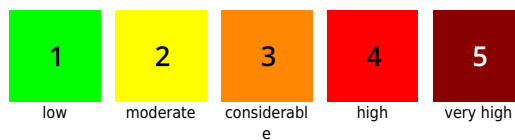
Allgäuer Hauptkamm, Werdenfelser Alpen, Berchtesgadener Alpen



Avalanche problems



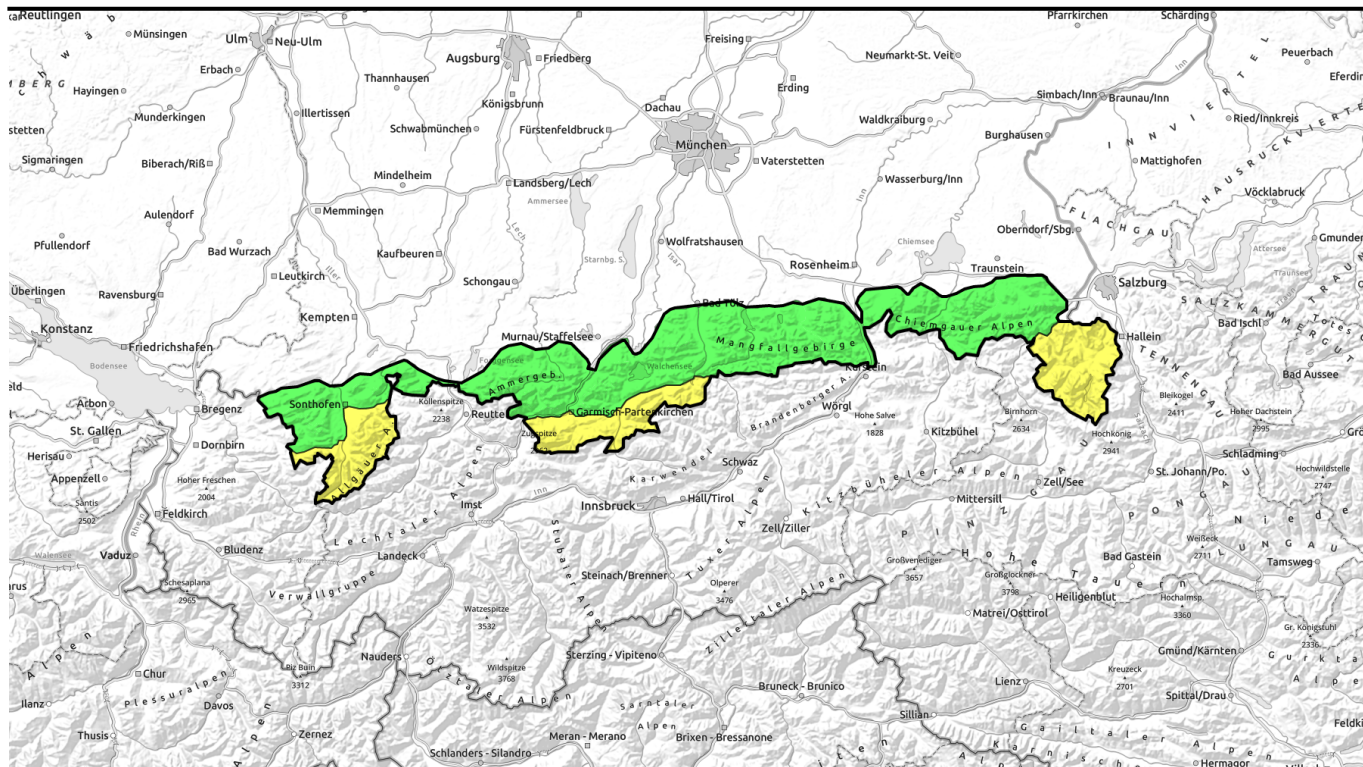
Danger ratings



Expositions



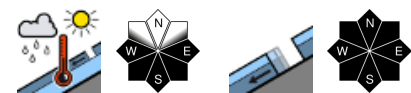
28.03.2022, afternoon



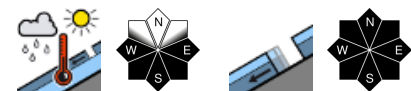
Frühjahrsverhältnisse mit günstigen Verhältnissen vormittags und tageszeitlichem Anstieg der Lawinengefahr. Wechtenbrüche möglich.



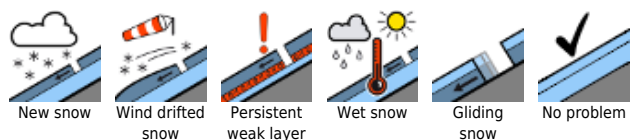
Allgäuer Vorberge, Ammergauer Alpen, Bayerische Voralpen West, Bayerische Voralpen Mitte, Bayerische Voralpen Ost, Chiemgauer Alpen West, Chiemgauer Alpen Ost



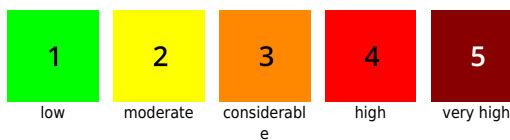
Allgäuer Hauptkamm, Werdenfelser Alpen, Berchtesgadener Alpen



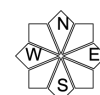
Avalanche problems



Danger ratings

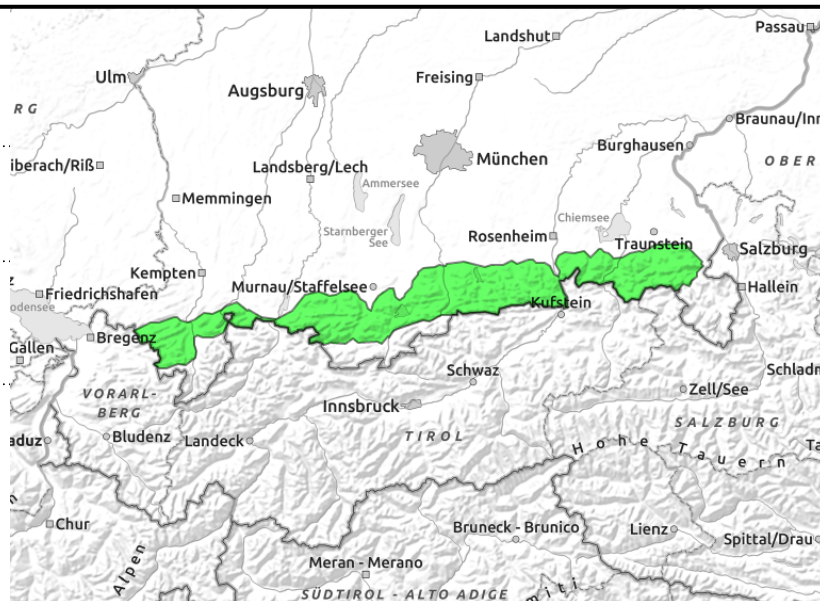
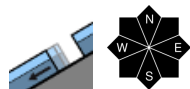
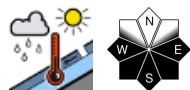


Expositions



28.03.2022

Allgäuer Vorberge, Ammergauer Alpen, Bayerische Voralpen West, Bayerische Voralpen Mitte, Bayerische Voralpen Ost, Chiemgauer Alpen West, Chiemgauer Alpen Ost



Low avalanche danger. Beware of taking a fall on hard surfaces in the morning.

Avalanche danger is low. Main problem: wet-snow. Isolated danger zones occur particularly on sunny, rocky steep slopes. In the course of the day, isolated small wet loose-snow avalanches can trigger. On steep grass-covered slopes and in sparsely wooded areas, isolated glide-snow avalanches are possible on smooth ground which can reach medium size.

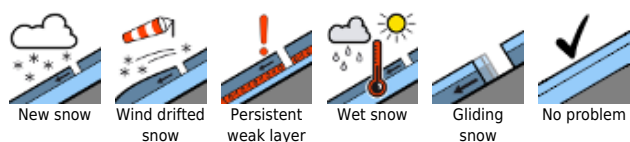
Snowpack structure

In early morning the snowpack has a crust which is capable of bearing loads; the surface is very hard and by and large stable. Warm temperatures and sun soften the snowpack during the morning - first on east, then on south and west-facing slopes. At intermediate altitudes the snowpack softens in places superficially in the afternoon also on shady slopes. In general the snowpack is moist down to the ground, frequently even wet at ground level which enhances gliding movements of the entire snowpack. Snowpack depths are below average for this juncture of the season; on sunny slopes there is hardly any snow left up to 1500.

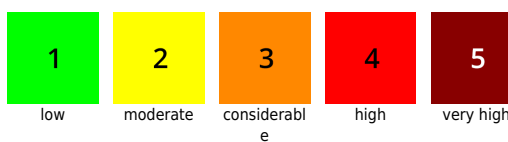
Outlook

Tuesday will be overcast and a little cooler. The avalanche danger will not change significantly.

Avalanche problems



Danger ratings

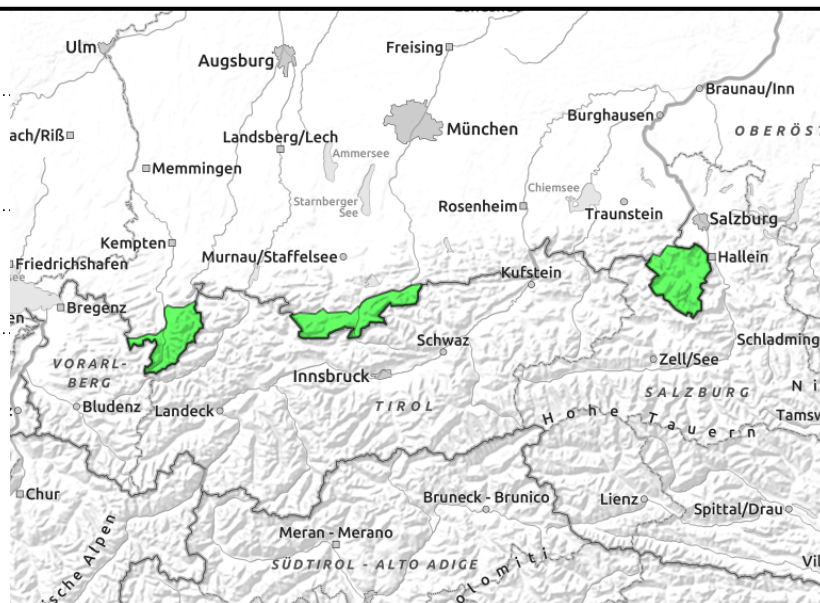
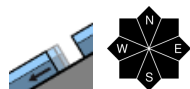
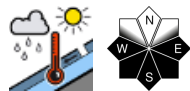


Expositions



28.03.2022, morning

Allgäuer Hauptkamm, Werdenfeller Alpen, Berchtesgadener Alpen



Increasing sink-in depths during the day are bellwethers of wet-snow avalanche danger

Avalanche danger increases from low to moderate during the daytime. Main problem: wet-snow. Isolated danger zones occur particularly on sunny, rocky steep slopes. In the course of the day, small to medium-sized loose-snow avalanches can trigger.

On steep grass-covered slopes and in sparsely wooded areas, glide-snow avalanches are possible on smooth ground. This applies mainly to the Allgäu and the afternoon. Isolated glide snow avalanches can grow to large size.

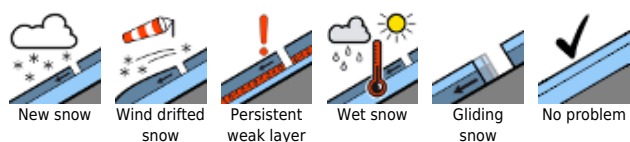
Snowpack structure

In the morning, the snowpack has a crust which is capable of bearing loads and the surface is very hard and by and large stable. In the morning sun and warm temperature turn the snow to firn, first on east-facing slopes, then also on south-facing and west-facing slopes. At intermediate altitudes the snow is in places also superficially soft on shady slopes. When softening the snowpack forfeits its stability and cohesion. At ground level the snow is often wet up to high altitudes, which enhances gliding movement of the entire snowpack. Snowpack depths are below average for this juncture of the season; on sunny slopes there is hardly any snow left up to 1500.

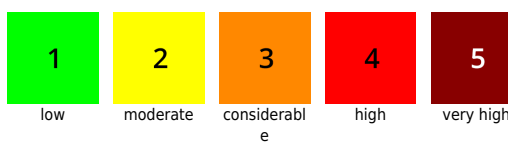
Outlook

Tuesday will be overcast and a little cooler. The avalanche danger will not change significantly.

Avalanche problems



Danger ratings

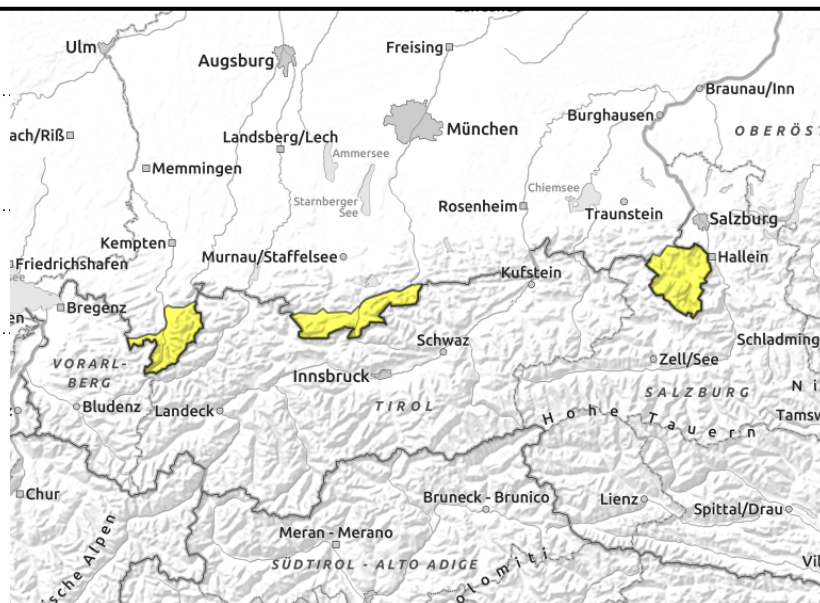
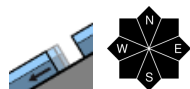
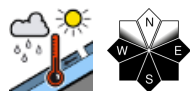


Expositions



28.03.2022, afternoon

Allgäuer Hauptkamm, Werdenfeller Alpen, Berchtesgadener Alpen



Increasing sink-in depths during the day are bellwethers of wet-snow avalanche danger

Avalanche danger increases from low to moderate during the daytime. Main problem: wet-snow. Isolated danger zones occur particularly on sunny, rocky steep slopes. In the course of the day, small to medium-sized loose-snow avalanches can trigger.

On steep grass-covered slopes and in sparsely wooded areas, glide-snow avalanches are possible on smooth ground. This applies mainly to the Allgäu and the afternoon. Isolated glide snow avalanches can grow to large size.

Snowpack structure

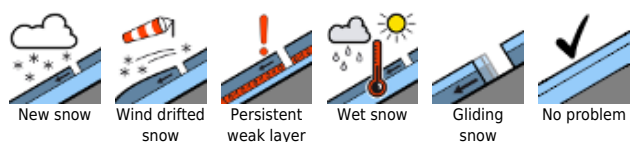
In the morning, the snowpack has a crust which is capable of bearing loads and the surface is very hard and by and large stable. In the morning sun and warm temperature turn the snow to firn, first on east-facing slopes, then also on south-facing and west-facing slopes. At intermediate altitudes the snow is in places also superficially soft on shady slopes. When softening the snowpack forfeits its stability and cohesion. At ground level the snow is often wet up to high altitudes, which enhances gliding movement of the entire snowpack. Snowpack depths are below average for this juncture of the season; on sunny slopes there is hardly any snow left up to 1500.

Outlook

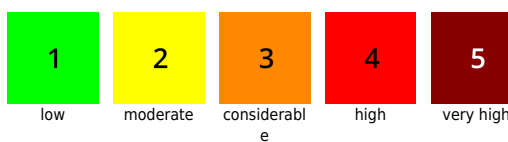
Tuesday will be overcast and a little cooler. The avalanche danger will not change significantly.

Translated by Jeffrey McCabe, www.creativtrans.com

Avalanche problems



Danger ratings



Expositions

