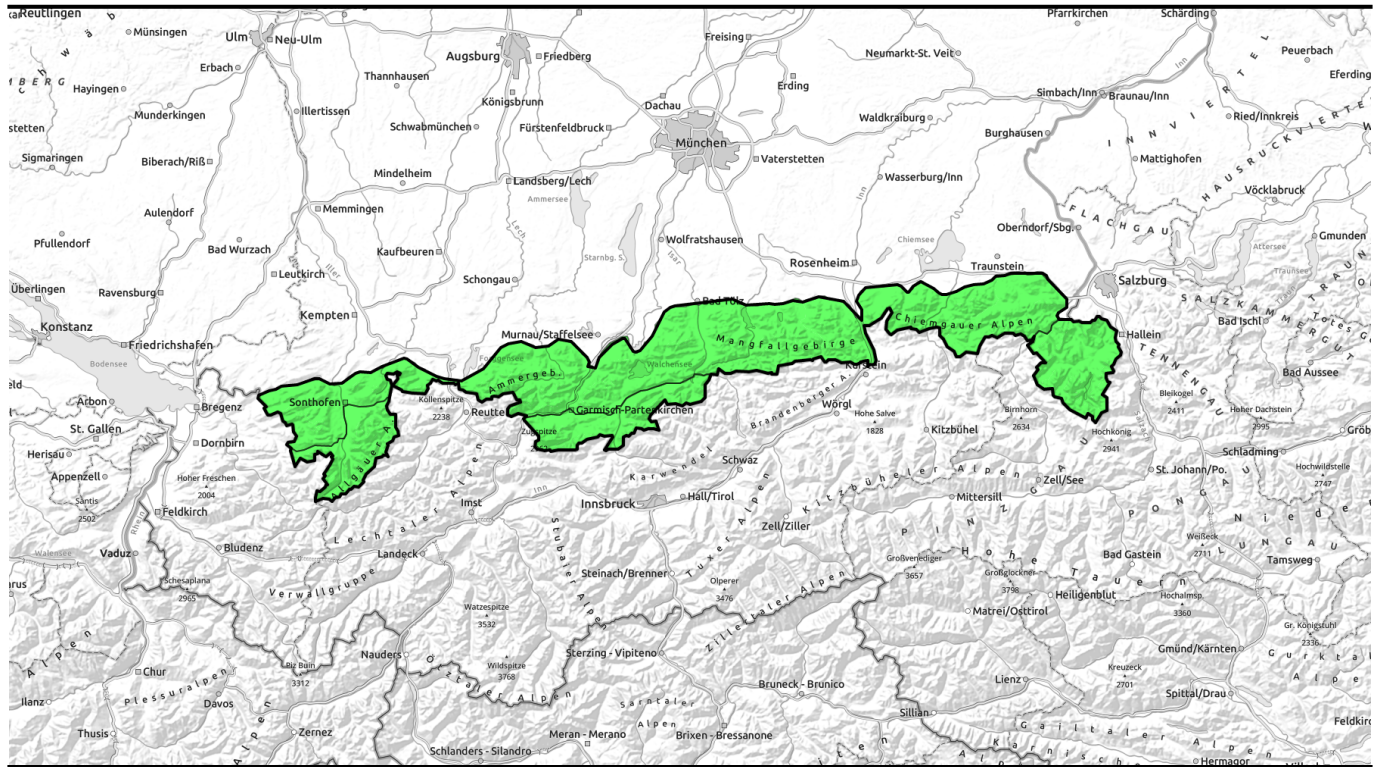
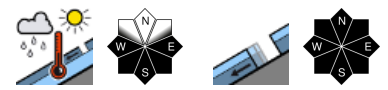


27.03.2022, morning

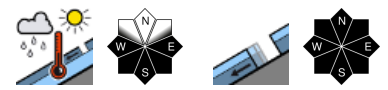


Springtime conditions, daytime increase in avalanche danger; caution: cornices

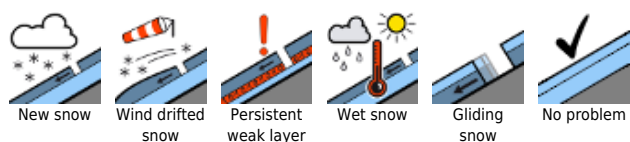
1 Allgäuer Vorberge, Ammergauer Alpen, Bayerische Voralpen West, Bayerische Voralpen Mitte, Bayerische Voralpen Ost, Chiemgauer Alpen West, Chiemgauer Alpen Ost



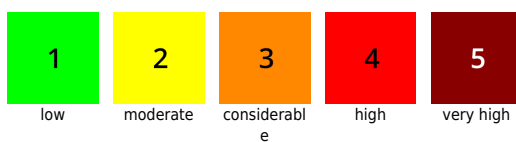
1 Allgäu Hauptkamm, Werdenfelser Alpen, Berchtesgadener Alpen



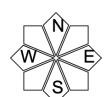
Avalanche problems



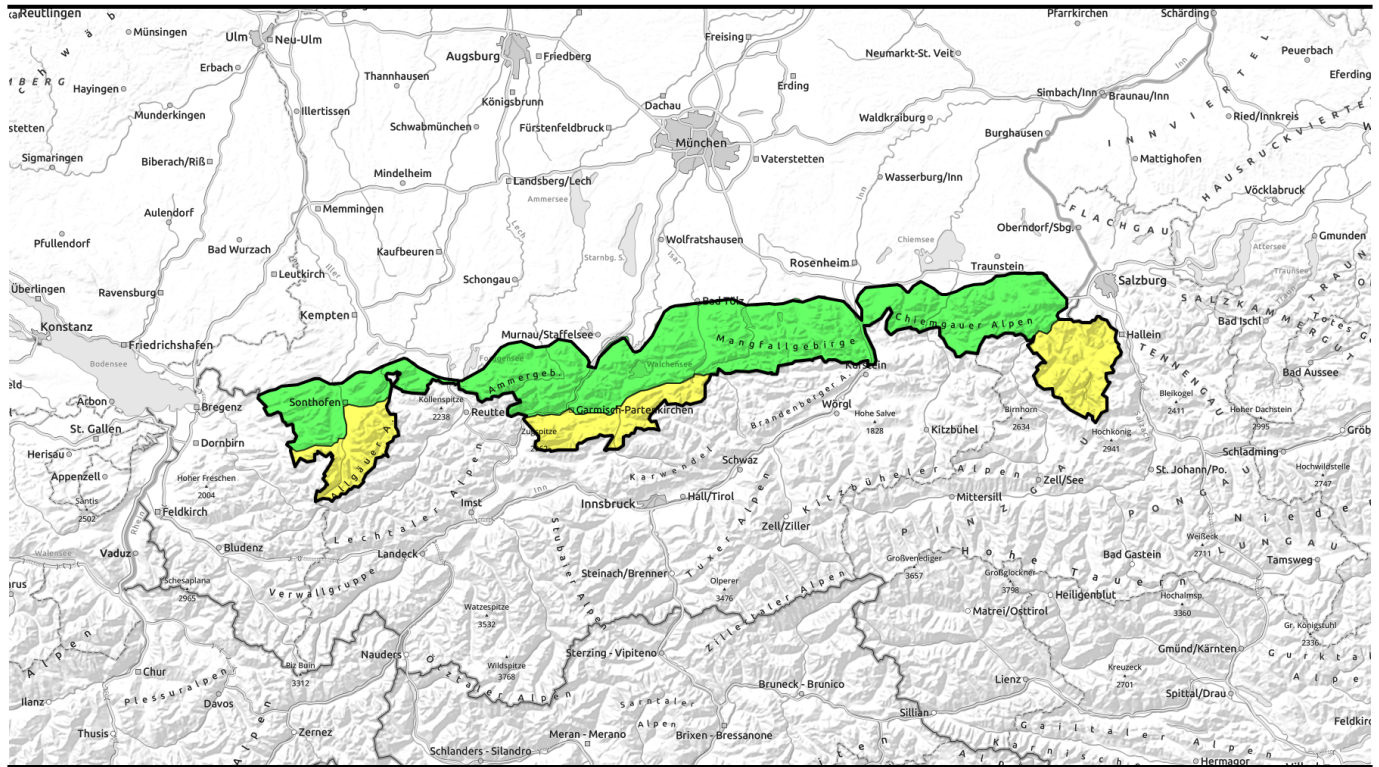
Danger ratings




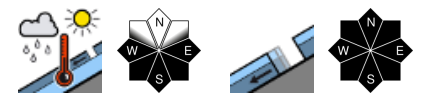

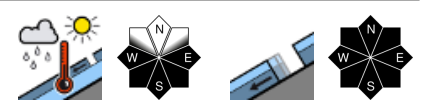
Expositions



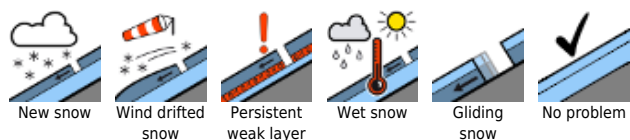
27.03.2022, afternoon



Frühjahrsverhältnisse mit tageszeitlichem Anstieg der Lawinengefahr. Wechtenbrüche möglich.

	<p>Allgäuer Vorberge, Ammergauer Alpen, Bayerische Voralpen West, Bayerische Voralpen Mitte, Bayerische Voralpen Ost, Chiemgauer Alpen West, Chiemgauer Alpen Ost</p>	
	<p>Allgäuer Hauptkamm, Werdenfeller Alpen, Berchtesgadener Alpen</p>	

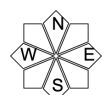
Avalanche problems



Danger ratings

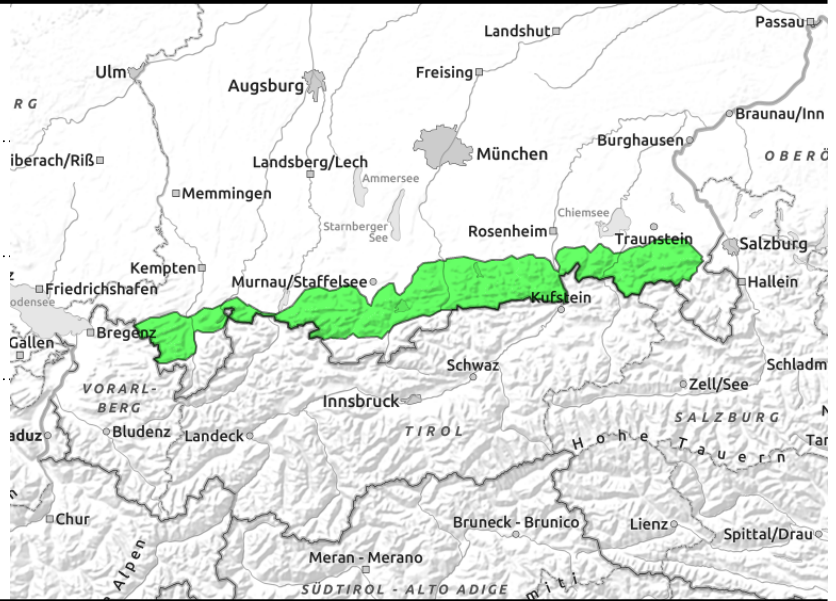
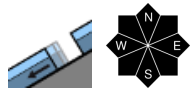
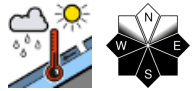


Expositions



27.03.2022

Allgäuer Vorberge, Ammergauer Alpen, Bayerische Voralpen West, Bayerische Voralpen Mitte, Bayerische Voralpen Ost, Chiemgauer Alpen West, Chiemgauer Alpen Ost



Low avalanche danger. Hard surfaces: heed risks of falling in morning and on shady slopes.

Avalanche danger is low. Main problem: wet-snow. Isolated danger zones occur particularly on sunny, rocky steep slopes. In the course of the day, isolated small wet loose-snow avalanches can trigger naturally.

On steep grass-covered slopes and in sparsely wooded areas, isolated glide-snow avalanches are possible on smooth ground which can reach medium size.

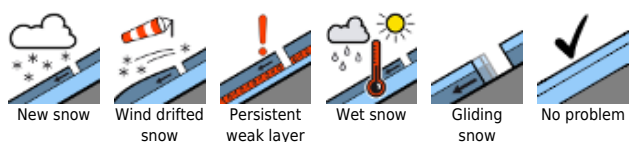
Snowpack structure

In early morning the snowpack has a crust which is capable of bearing loads, is by and large stable, before the springlike temperatures on sunny slopes soften it (first on east, then on south and west-facing slopes, in some shady slopes in the afternoon the snow also becomes soft). At ground level it is already wet up to high altitudes, which enhances gliding movement of the entire snowpack. Snow depths are below average for this juncture of the season, on sunny slopes there is no snow on the ground up to 1400 m.

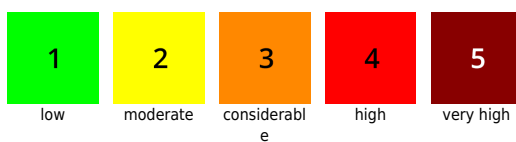
Outlook

The sunny weather will continue also on Monday. A slight daytime danger cycle will persist.

Avalanche problems



Danger ratings

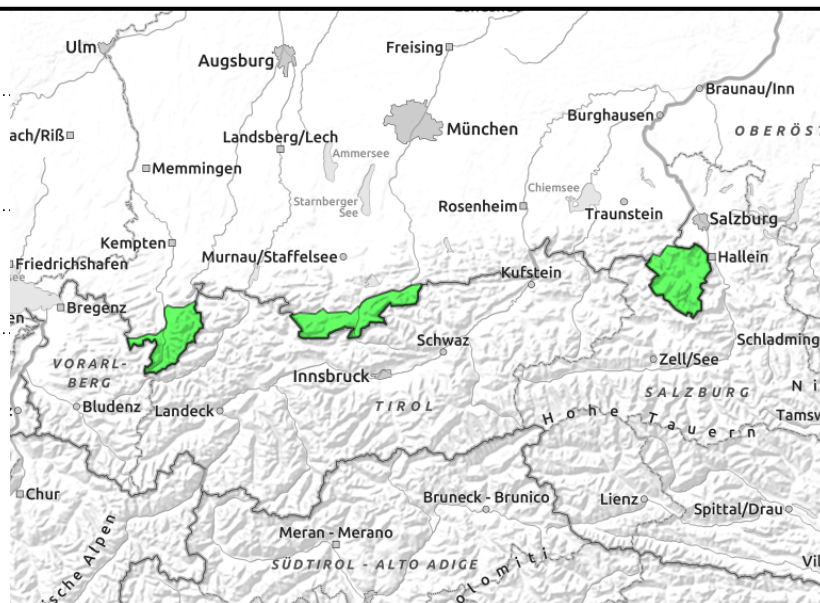
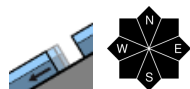
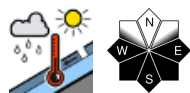


Expositions



27.03.2022, morning

Allgäuer Hauptkamm, Werdenfeller Alpen, Berchtesgadener Alpen



Increasing sink-in depths during the day are bellwethers of wet-snow avalanche danger

Avalanche danger increases from low to moderate during the daytime. Main problem: wet-snow. Isolated danger zones occur particularly on sunny, rocky steep slopes. In the course of the day, isolated small wet loose-snow avalanches can trigger naturally or by skiers. On steep grass-covered slopes and in sparsely wooded areas, isolated glide-snow avalanches are possible on smooth ground which can reach medium size.

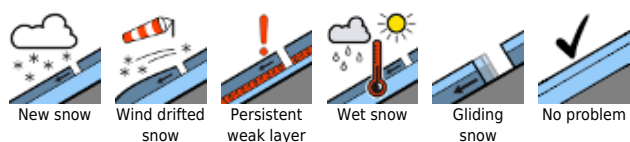
Snowpack structure

In early morning the snowpack has a crust which is capable of bearing loads, is by and large stable, before the springlike temperatures on sunny slopes transform it to firm snow. Thereafter, the snowpack forfeits its firmness and its bonding. At ground level it is already wet up to high altitudes, which enhances gliding movement of the entire snowpack. Snow depths are below average for this juncture of the season, on sunny slopes there is no snow on the ground up to 1400 m.

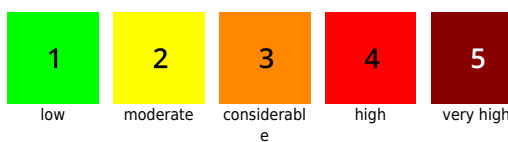
Outlook

The sunny weather will continue also on Monday. A slight daytime danger cycle will persist.

Avalanche problems



Danger ratings

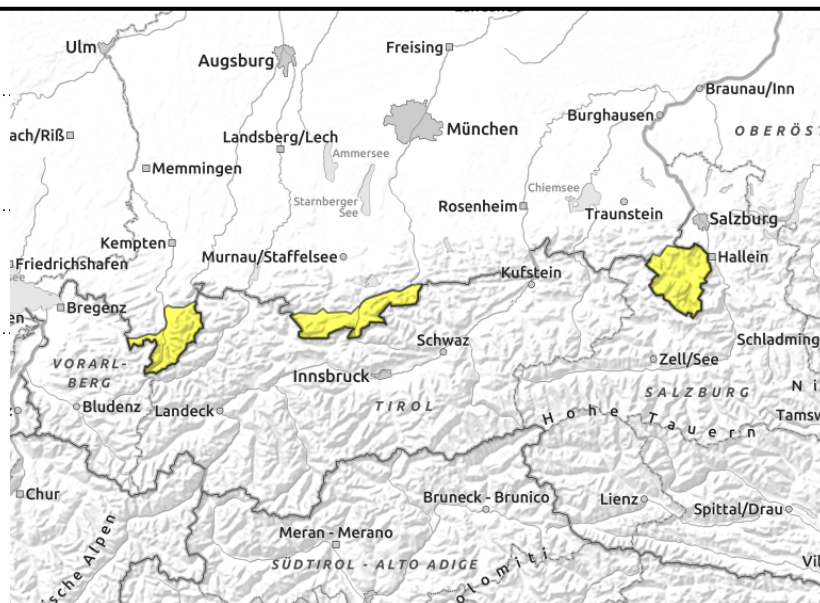
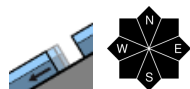
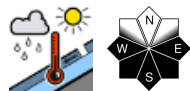


Expositions



27.03.2022, afternoon

Allgäuer Hauptkamm, Werdenfeller Alpen, Berchtesgadener Alpen



Increasing sink-in depths during the day are bellwethers of wet-snow avalanche danger

Avalanche danger increases from low to moderate during the daytime. Main problem: wet-snow. Isolated danger zones occur particularly on sunny, rocky steep slopes. In the course of the day, isolated small wet loose-snow avalanches can trigger naturally or by skiers. On steep grass-covered slopes and in sparsely wooded areas, isolated glide-snow avalanches are possible on smooth ground which can reach medium size.

Snowpack structure

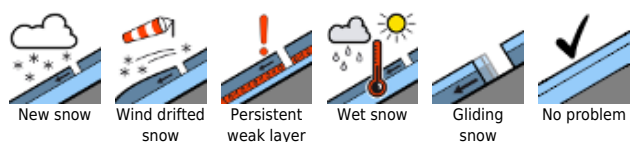
In early morning the snowpack has a crust which is capable of bearing loads, is by and large stable, before the springlike temperatures on sunny slopes transform it to firm snow. Thereafter, the snowpack forfeits its firmness and its bonding. At ground level it is already wet up to high altitudes, which enhances gliding movement of the entire snowpack. Snow depths are below average for this juncture of the season, on sunny slopes there is no snow on the ground up to 1400 m.

Outlook

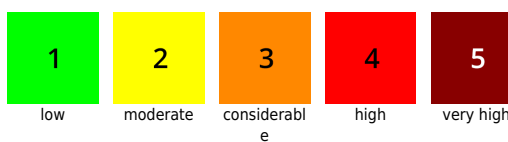
The sunny weather will continue also on Monday. A slight daytime danger cycle will persist.

Translated by Jeffrey McCabe, www.creativtrans.com

Avalanche problems



Danger ratings



Expositions

