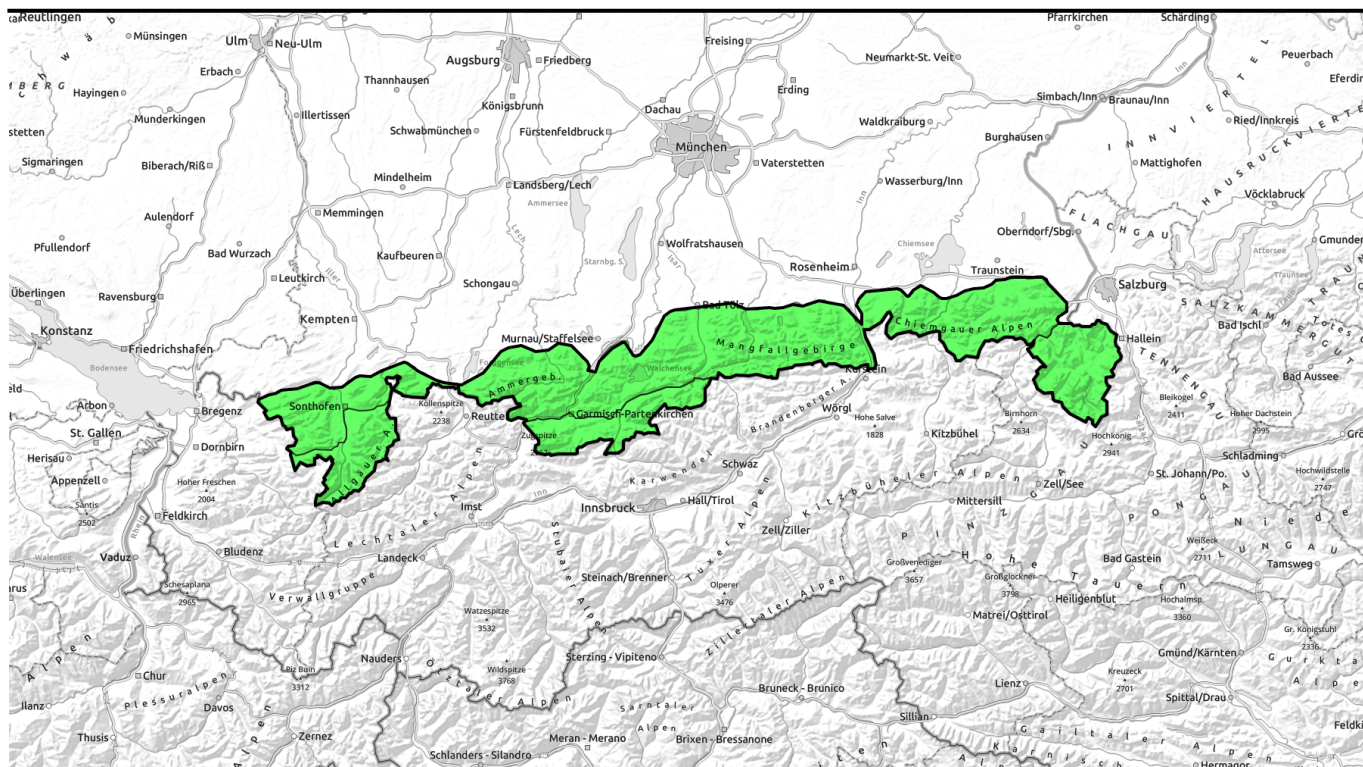




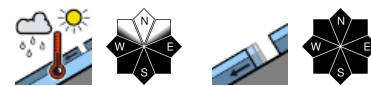
# 25.03.2022, morning



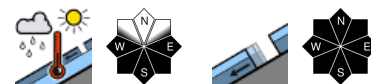
## Springtime conditions, daytime increase in avalanche danger; caution: cornices



Allgäuer Vorberge, Ammergauer Alpen, Bayerische Voralpen West, Bayerische Voralpen Mitte, Bayerische Voralpen Ost, Chiemgauer Alpen West, Chiemgauer Alpen Ost



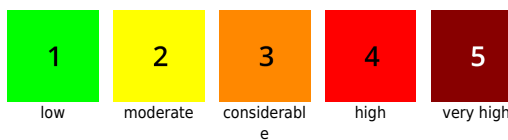
Allgäu Hauptkamm, Werdenfelser Alpen, Berchtesgadener Alpen



### Avalanche problems

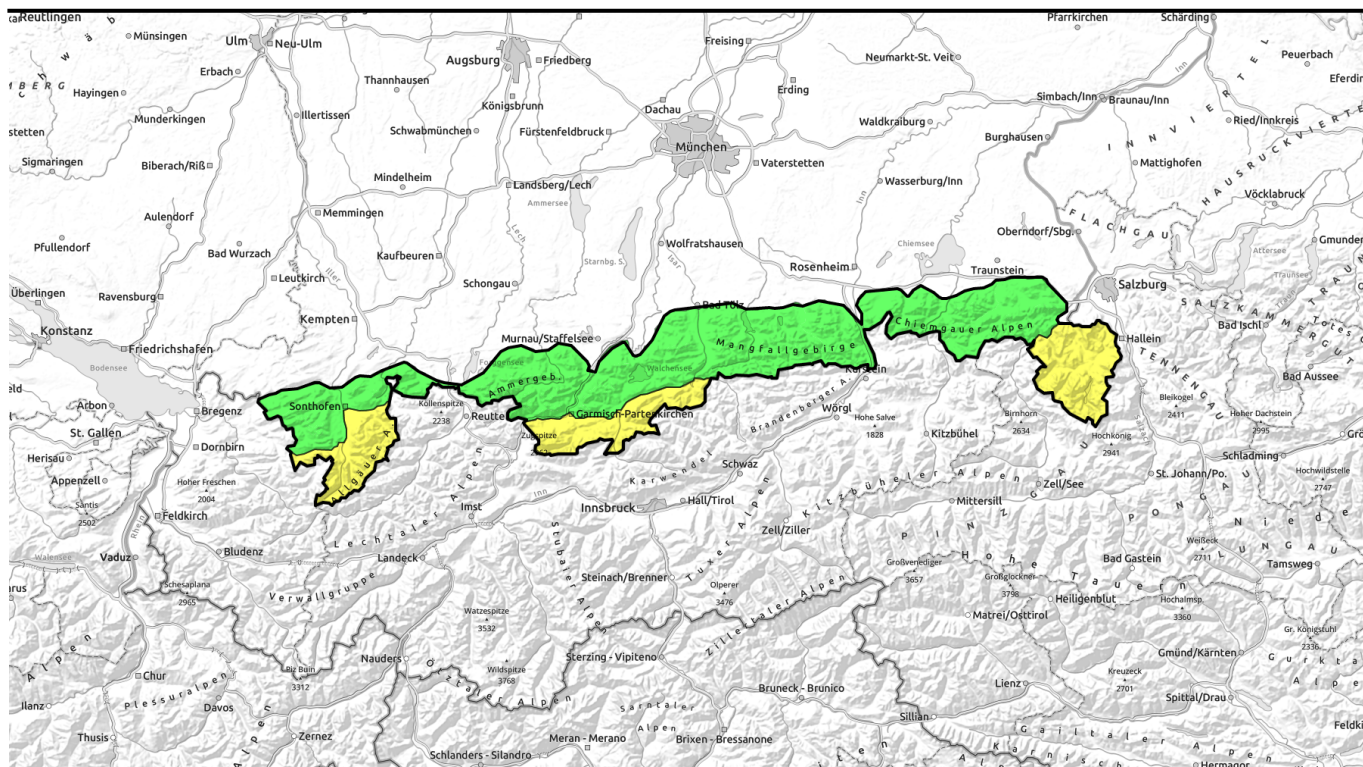


### Danger ratings



### Expositions





## Frühjahrsverhältnisse mit tageszeitlichem Anstieg der Lawinengefahr; Wechtenbrüche möglich



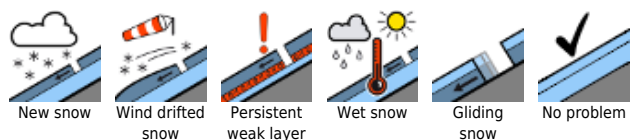
Allgäuer Vorberge, Ammergauer Alpen, Bayerische Voralpen West, Bayerische Voralpen Mitte, Bayerische Voralpen Ost, Chiemgauer Alpen West, Chiemgauer Alpen Ost



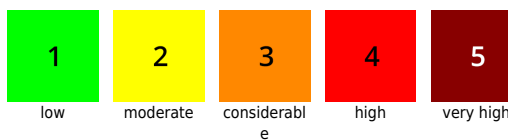
Allgäuer Hauptkamm, Werdenfelser Alpen, Berchtesgadener Alpen



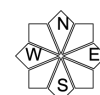
### Avalanche problems



### Danger ratings

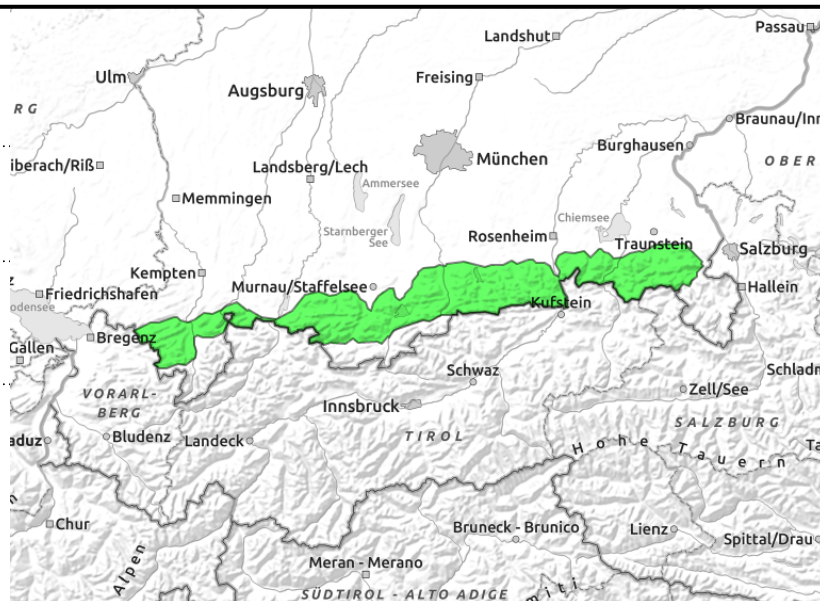
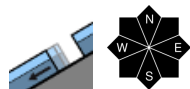
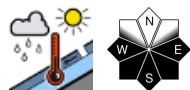


### Expositions



**25.03.2022**

**Allgäuer Vorberge, Ammergauer Alpen, Bayerische Voralpen West, Bayerische Voralpen Mitte, Bayerische Voralpen Ost, Chiemgauer Alpen West, Chiemgauer Alpen Ost**



## Despite daytime snowpack softening, low avalanche danger

Avalanche danger is low. Main problem: wet-snow. Isolated danger zones occur particularly on sunny, focky steep slopes. In the course of the day, isolated small wet loose-snow avalanches can trigger naturally.

On steep grass-covered slopes and in sparsely wooded areas, isolated glide-snow avalanches are possible on smooth ground which can reach medium size.

### Snowpack structure

In early morning the snowpack has a crust which is capable of bearing loads, is by and large stable, before the springlike temperatures on sunny slopes transform it to firm snow. Thereafter, the snowpack forfeits its firmness and its bonding. At ground level it is already wet up to high altitudes, which enhances gliding movement of the entire snowpack. Snow depths are below average for this juncture of the season, on sunny slopes there is no snow on the ground up to 1400 m.

### Outlook

Over the weekend the sunny weather will continue, though it will no longer be quite as mild. Slight daytime cycle of avalanche danger.

#### Avalanche problems



#### Danger ratings

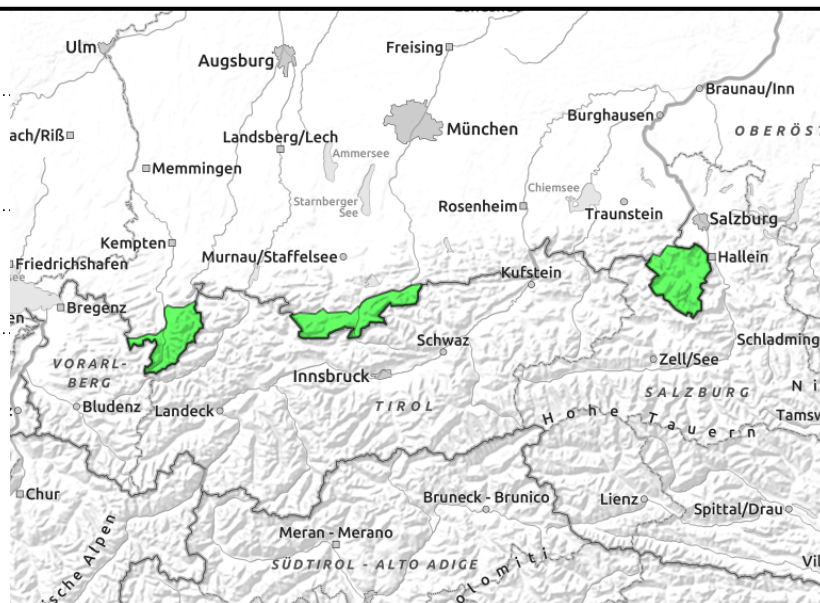
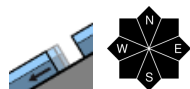
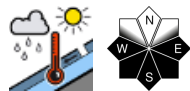


#### Expositions



# 25.03.2022, morning

## Allgäuer Hauptkamm, Werdenfeller Alpen, Berchtesgadener Alpen



## Increasing sink-in depths during the day are bellwethers of wet-snow avalanche danger

Avalanche danger increases from low to moderate during the daytime. Main problem: wet-snow. Isolated danger zones occur particularly on sunny, rocky steep slopes. In the course of the day, isolated small wet loose-snow avalanches can trigger naturally or by skiers. On steep grass-covered slopes and in sparsely wooded areas, isolated glide-snow avalanches are possible on smooth ground which can reach medium size.

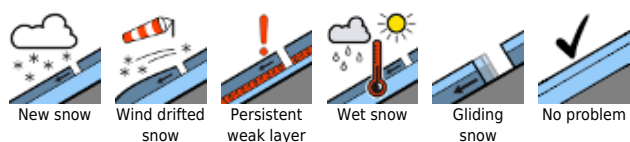
### Snowpack structure

In early morning the snowpack has a crust which is capable of bearing loads, is by and large stable, before the springlike temperatures on sunny slopes transform it to firm snow. Thereafter, the snowpack forfeits its firmness and its bonding. At ground level it is already wet up to high altitudes, which enhances gliding movement of the entire snowpack. Snow depths are below average for this juncture of the season, on sunny slopes there is no snow on the ground up to 1400 m.

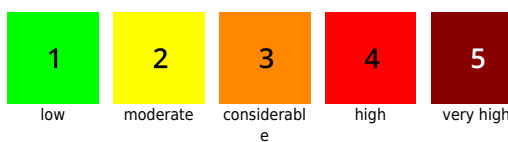
### Outlook

Over the weekend the sunny weather will continue, though it will no longer be quite as mild. Slight daytime cycle of avalanche danger.

#### Avalanche problems



#### Danger ratings

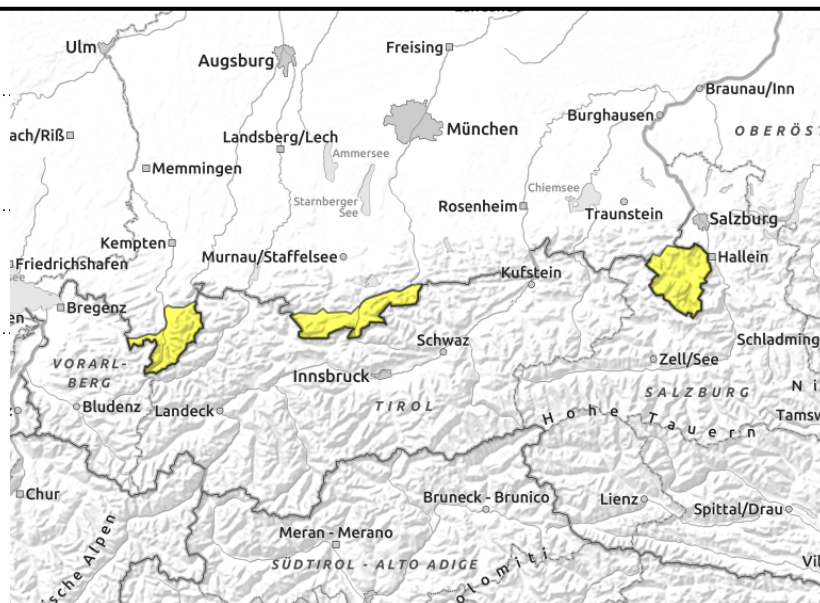
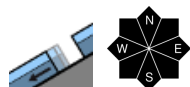
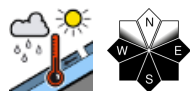


#### Expositions



# 25.03.2022, afternoon

## Allgäuer Hauptkamm, Werdenföser Alpen, Berchtesgäder Alpen



### Increasing sink-in depths during the day are bellwethers of wet-snow avalanche danger

Avalanche danger increases from low to moderate during the daytime. Main problem: wet-snow. Isolated danger zones occur particularly on sunny, rocky steep slopes. In the course of the day, isolated small wet loose-snow avalanches can trigger naturally or by skiers. On steep grass-covered slopes and in sparsely wooded areas, isolated glide-snow avalanches are possible on smooth ground which can reach medium size.

#### Snowpack structure

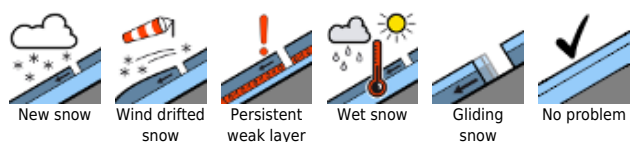
In early morning the snowpack has a crust which is capable of bearing loads, is by and large stable, before the springlike temperatures on sunny slopes transform it to firm snow. Thereafter, the snowpack forfeits its firmness and its bonding. At ground level it is already wet up to high altitudes, which enhances gliding movement of the entire snowpack. Snow depths are below average for this juncture of the season, on sunny slopes there is no snow on the ground up to 1400 m.

#### Outlook

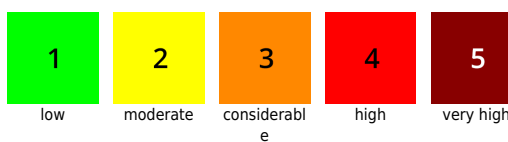
Over the weekend the sunny weather will continue, though it will no longer be quite as mild. Slight daytime cycle of avalanche danger.

Translated by Jeffrey McCabe, [www.creativtrans.com](http://www.creativtrans.com)

#### Avalanche problems



#### Danger ratings



#### Expositions

