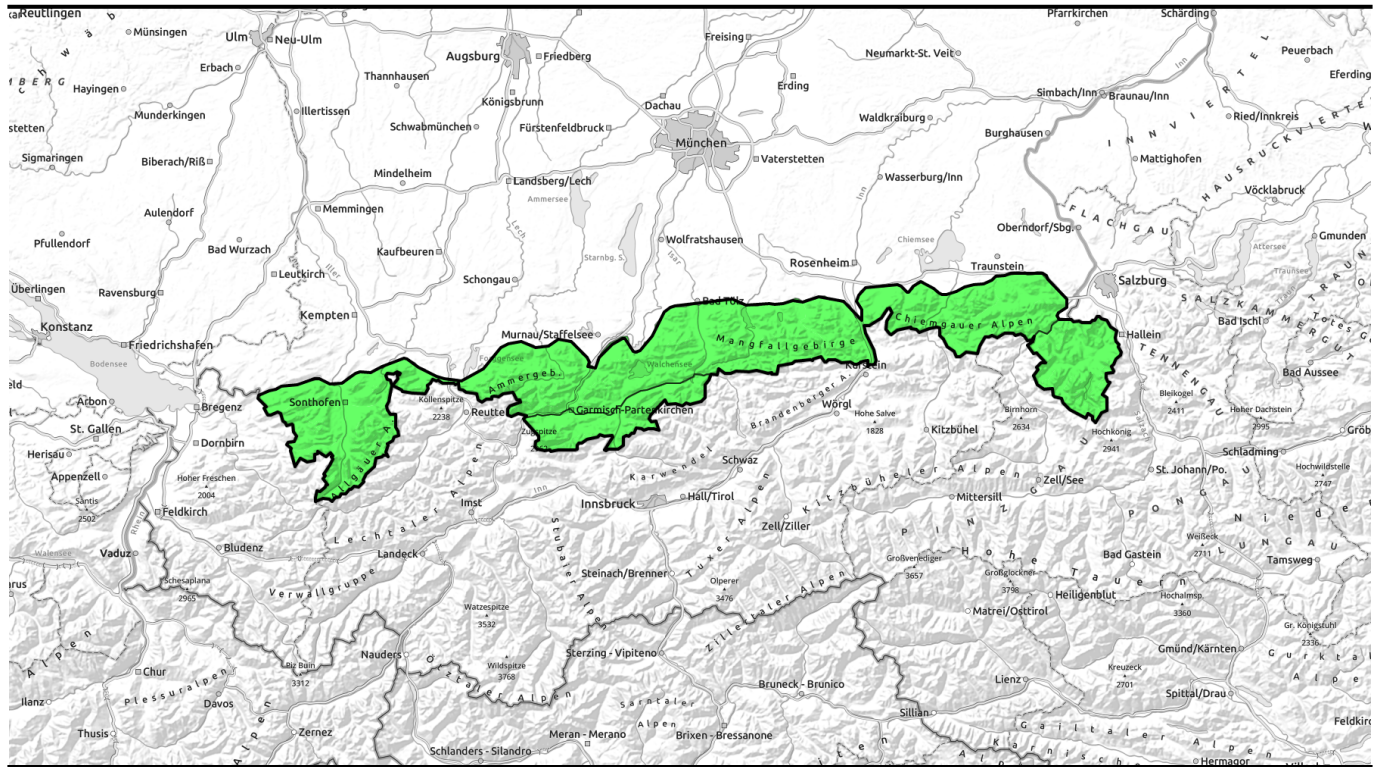


24.03.2022, morning

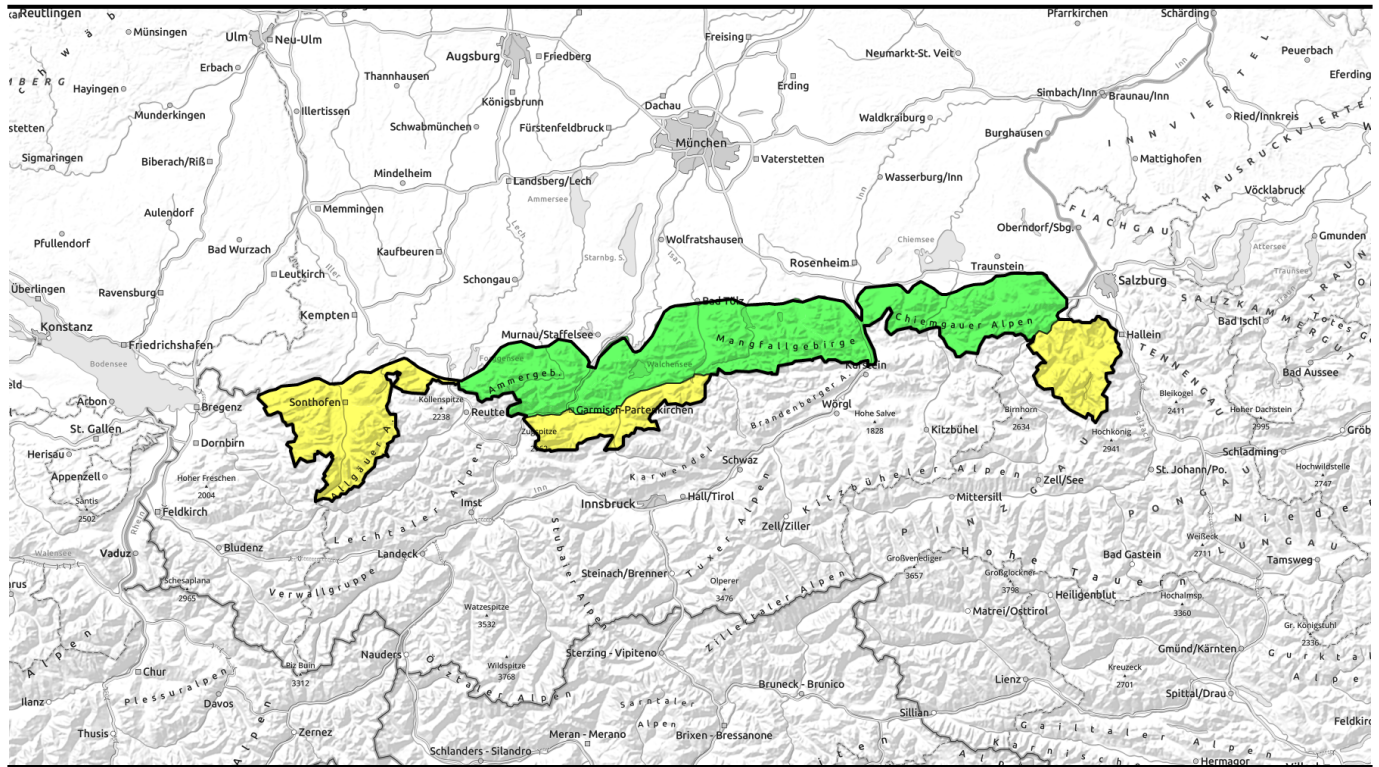


Springtime conditions, daytime increase in avalanche danger; caution: cornices

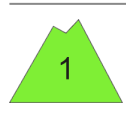
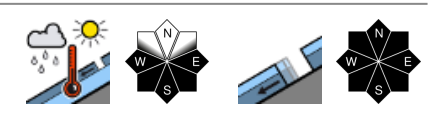
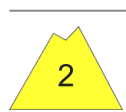
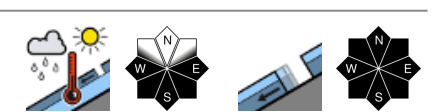
	Ammergauer Alpen, Bayerische Voralpen West, Bayerische Voralpen Mitte, Bayerische Voralpen Ost, Chiemgauer Alpen West, Chiemgauer Alpen Ost	
	Allgäuer Vorberge, Allgäuer Hauptkamm, Werdenfeller Alpen, Berchtesgadener Alpen	

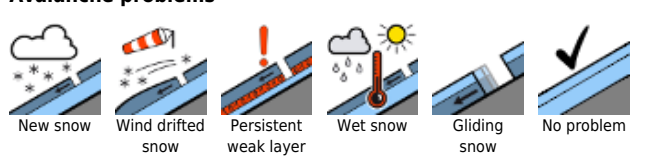
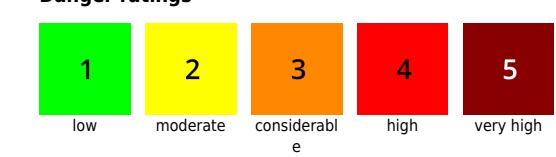
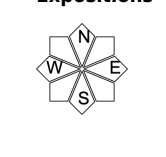
Avalanche problems	Danger ratings	Expositions

24.03.2022, afternoon



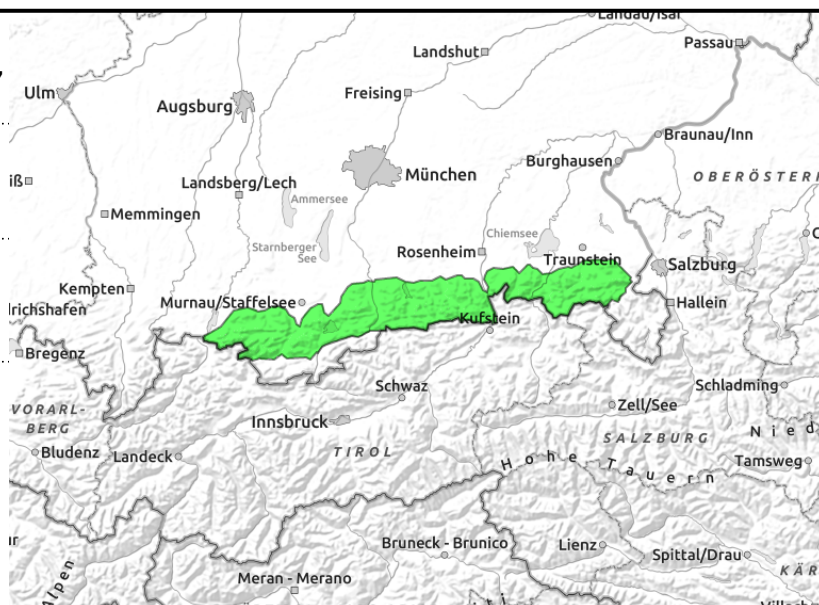
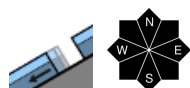
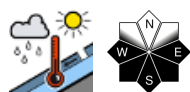
Frühjahrsverhältnisse mit tageszeitlichem Anstieg der Lawinengefahr; auf Wechtenbrüche achten

	<p>Ammergauer Alpen, Bayerische Voralpen West, Bayerische Voralpen Mitte, Bayerische Voralpen Ost, Chiemgauer Alpen West, Chiemgauer Alpen Ost</p>	
	<p>Allgäuer Vorberge, Allgäuer Hauptkamm, Werdenfelser Alpen, Berchtesgadener Alpen</p>	

<p>Avalanche problems</p> 	<p>Danger ratings</p> 	<p>Expositions</p> 
--	---	---

24.03.2022

Ammergauer Alpen, Bayerische Voralpen West, Bayerische Voralpen Mitte, Bayerische Voralpen Ost, Chiemgauer Alpen West, Chiemgauer Alpen Ost



Despite daytime snowpack softening, low avalanche danger

Avalanche danger is low. Main problem: wet-snow. Isolated danger zones occur particularly on sunny, focky steep slopes. In the course of the day, isolated small wet loose-snow avalanches can trigger naturally.

On steep grass-covered slopes and in sparsely wooded areas, isolated glide-snow avalanches are possible on smooth ground which can reach medium size.

Snowpack structure

In early morning the snowpack has a crust which is capable of bearing loads, is by and large stable, before the springlike temperatures on sunny slopes transform it to firm snow. Thereafter, the snowpack forfeits its firmness and its bonding. At ground level it is already wet up to high altitudes, which enhances gliding movement of the entire snowpack. Snow depths are below average for this juncture of the season, on sunny slopes there is no snow on the ground up to 1400 m.

Outlook

Tomorrow will be mild, typical springtime conditions will reign, with a slight daytime rise in avalanche danger.

Avalanche problems



Danger ratings

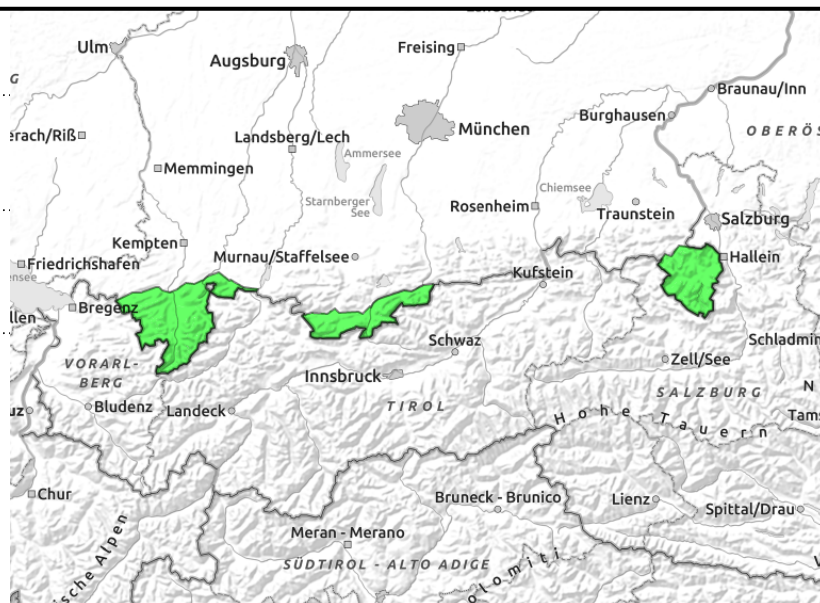
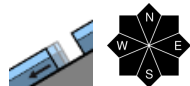
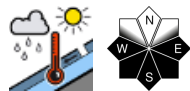


Expositions



24.03.2022, morning

Allgäuer Vorberge, Allgäuer Hauptkamm, Werdenfelser Alpen, Berchtesgadener Alpen



Increasing sink-in depths during the day are bellwethers of wet-snow avalanche danger

Avalanche danger increases from low to moderate during the daytime. Main problem: wet-snow. Isolated danger zones occur particularly on sunny, focky steep slopes. In the course of the day, isolated small wet loose-snow avalanches can trigger naturally.

On steep grass-covered slopes and in sparsely wooded areas, isolated glide-snow avalanches are possible on smooth ground which can reach larger size.

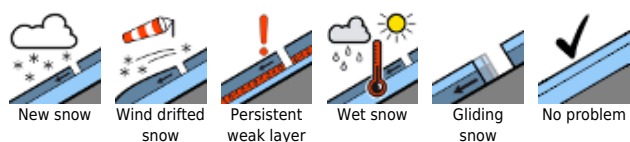
Snowpack structure

In early morning the snowpack has a crust which is capable of bearing loads, is by and large stable, before the springlike temperatures on sunny slopes transform it to firm snow. Thereafter, the snowpack forfeits its firmness and its bonding. At ground level it is already wet up to high altitudes, which enhances gliding movement of the entire snowpack. Snow depths are below average for this juncture of the season, on sunny slopes there is no snow on the ground up to 1400 m.

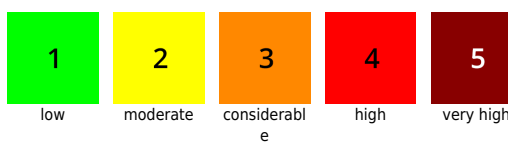
Outlook

Tomorrow will be mild, typical springtime conditions will reign, with a slight daytime rise in avalanche danger. Backcountry tours should begin early, end early.

Avalanche problems



Danger ratings

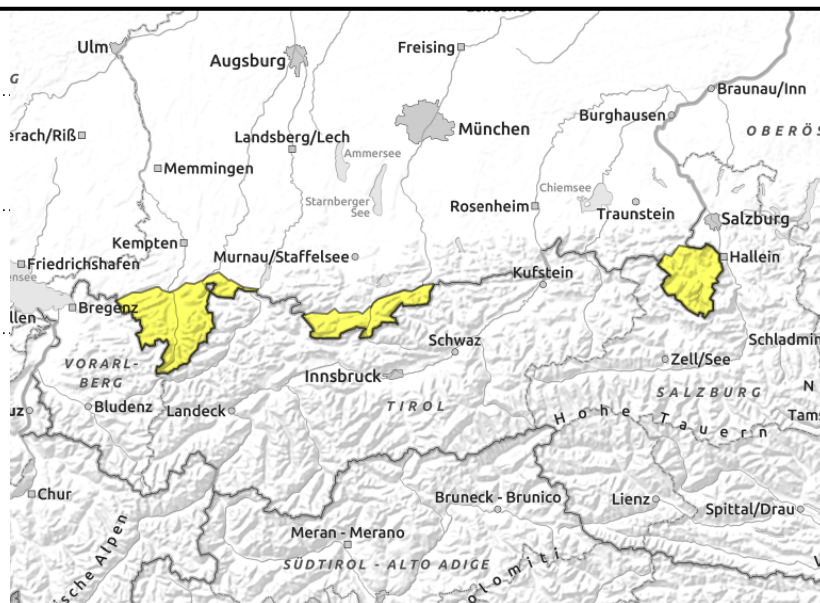
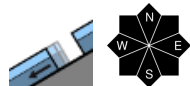
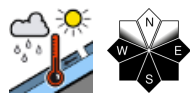


Expositions



24.03.2022, afternoon

Allgäuer Vorberge, Allgäuer Hauptkamm, Werdenfeller Alpen, Berchtesgadener Alpen



Increasing sink-in depths during the day are bellwethers of wet-snow avalanche danger

Avalanche danger increases from low to moderate during the daytime. Main problem: wet-snow. Isolated danger zones occur particularly on sunny, focky steep slopes. In the course of the day, isolated small wet loose-snow avalanches can trigger naturally. On steep grass-covered slopes and in sparsely wooded areas, isolated glide-snow avalanches are possible on smooth ground which can reach larger size.

Snowpack structure

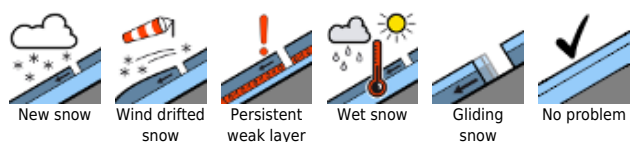
In early morning the snowpack has a crust which is capable of bearing loads, is by and large stable, before the springlike temperatures on sunny slopes transform it to firm snow. Thereafter, the snowpack forfeits its firmness and its bonding. At ground level it is already wet up to high altitudes, which enhances gliding movement of the entire snowpack. Snow depths are below average for this juncture of the season, on sunny slopes there is no snow on the ground up to 1400 m.

Outlook

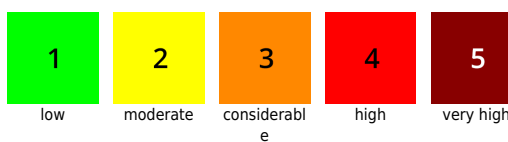
Tomorrow will be mild, typical springtime conditions will reign, with a slight daytime rise in avalanche danger. Backcountry tours should begin early, end early.

Translated by Jeffrey McCabe, www.creativtrans.com

Avalanche problems



Danger ratings



Expositions

