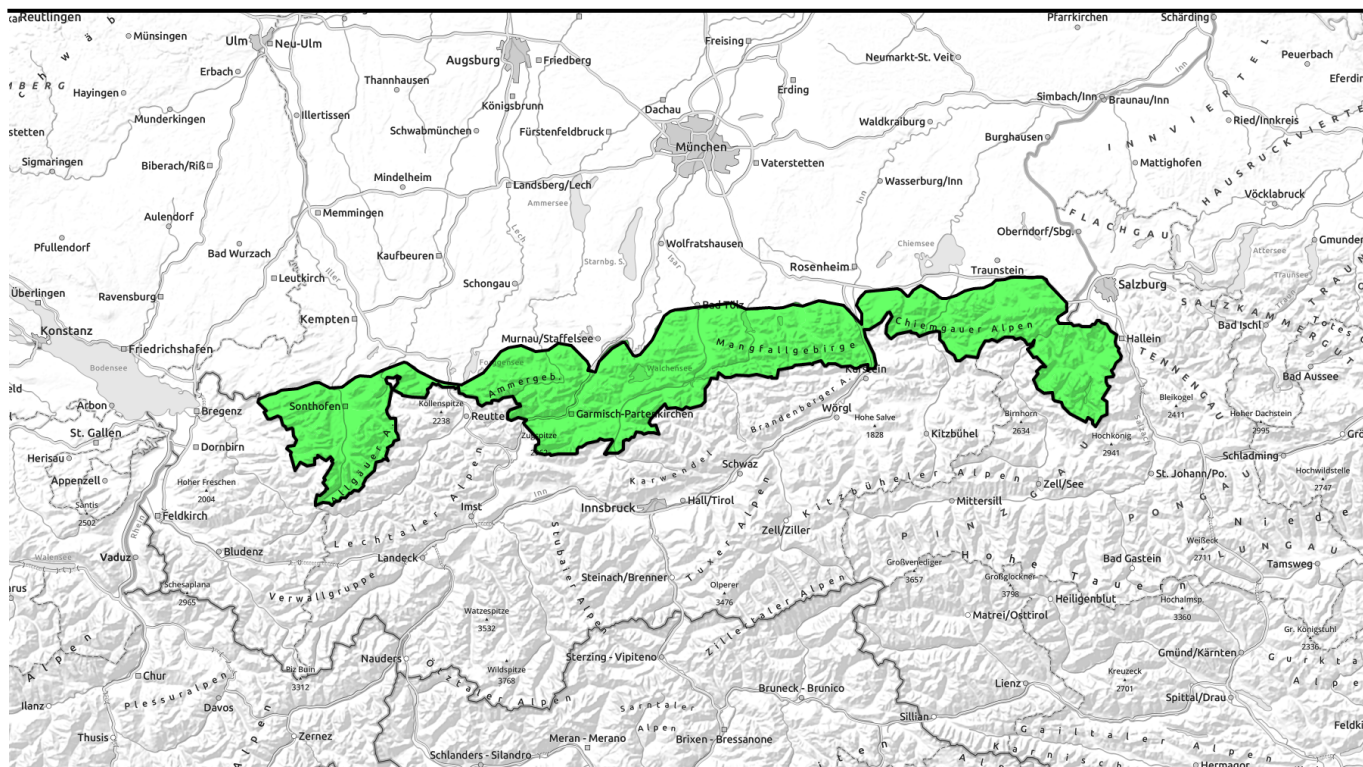




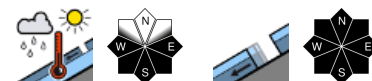
# 23.03.2022, morning



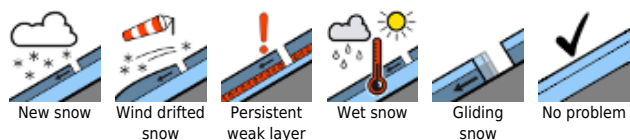
## Springtime conditions, daytime increase in avalanche danger



Allgäuer Vorberge, Allgäuer Hauptkamm, Ammergauer Alpen, Bayerische Voralpen West, Werdenfelser Alpen, Bayerische Voralpen Mitte, Bayerische Voralpen Ost, Chiemgauer Alpen West, Chiemgauer Alpen Ost, Berchtesgadener Alpen



### Avalanche problems



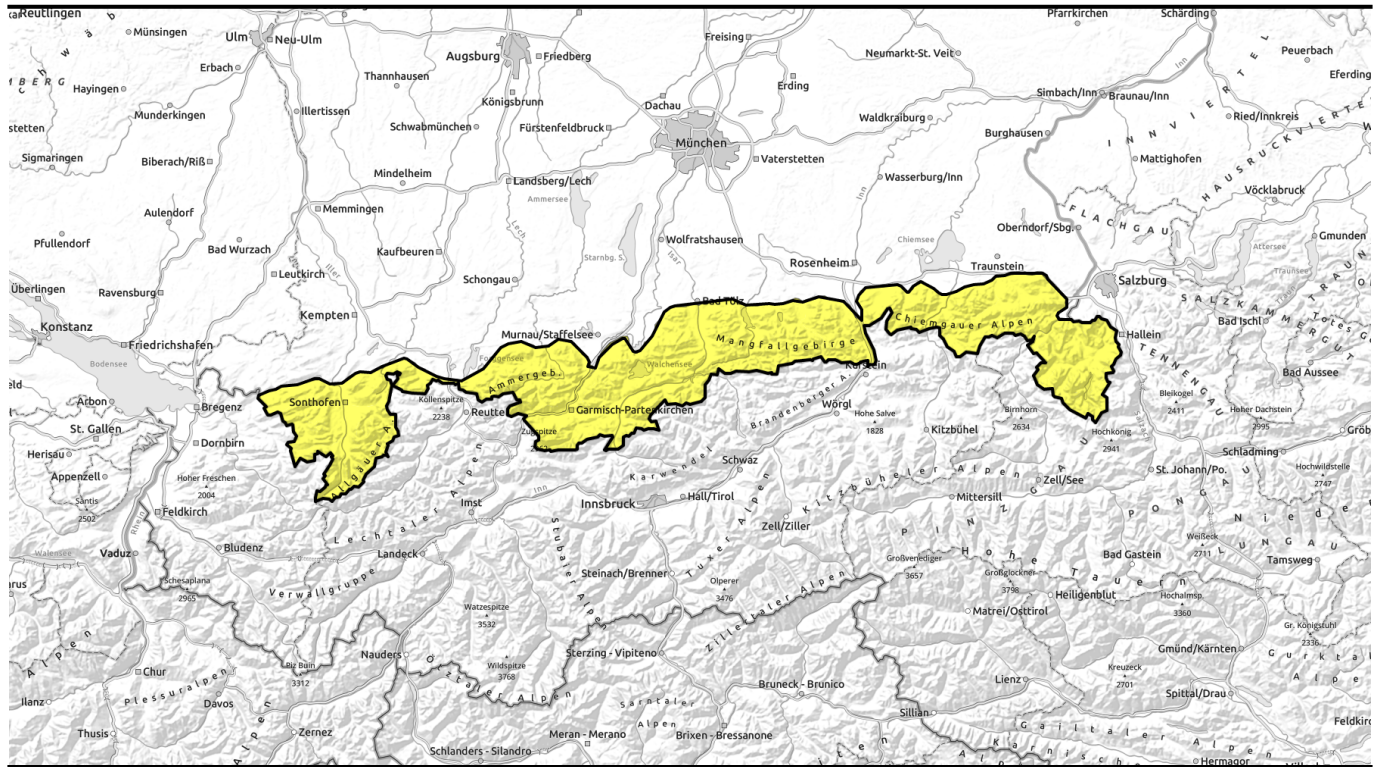
### Danger ratings



### Expositions



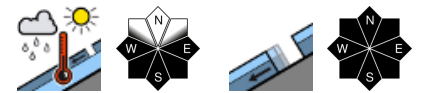
# 23.03.2022, afternoon



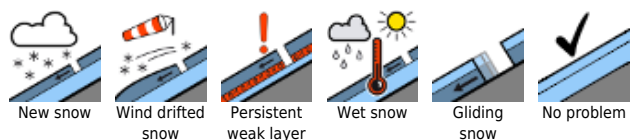
## Frühjahrsverhältnisse mit tageszeitlichem Anstieg der Lawinengefahr



Allgäuer Vorberge, Allgäuer Hauptkamm, Ammergauer Alpen, Bayerische Voralpen West, Werdenfeller Alpen, Bayerische Voralpen Mitte, Bayerische Voralpen Ost, Chiemgauer Alpen West, Chiemgauer Alpen Ost, Berchtesgadener Alpen



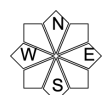
### Avalanche problems



### Danger ratings

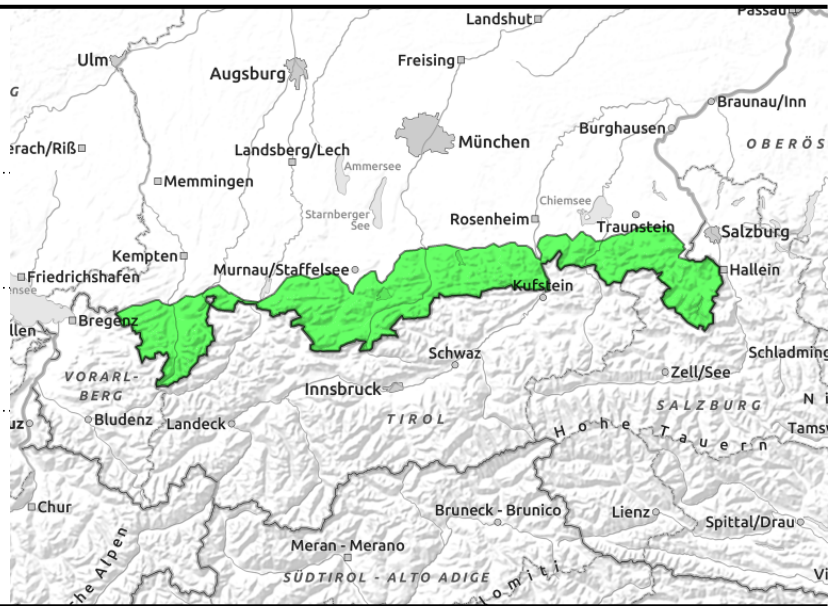
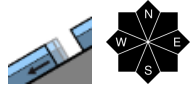
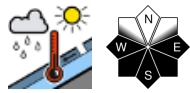


### Expositions



# 23.03.2022, morning

Allgäuer Vorberge, Allgäuer Hauptkamm, Ammergauer Alpen, Bayerische Voralpen West, Werdenfeller Alpen, Bayerische Voralpen Mitte, Bayerische Voralpen Ost, Chiemgauer Alpen West, Chiemgauer Alpen Ost, Berchtesgadener Alpen



## Increasing sink-in depths are red flags of wet-snow avalanche danger

Avalanche danger during the day increases from low to moderate. The prevailing problem is wet snow. Danger zones occur particularly on sunny, rocky, steep slopes. During the course of the day, small-to-medium sized wet loose-snow avalanches can trigger naturally or be triggered by skiers. On steep grass-covered slopes and in sparsely wooded zones, in addition, glide-snow avalanches sliding over the smooth ground is possible. This is particularly the case in the Allgäu and in general during the afternoon. Glide-snow avalanches can grow to large size in isolated cases.

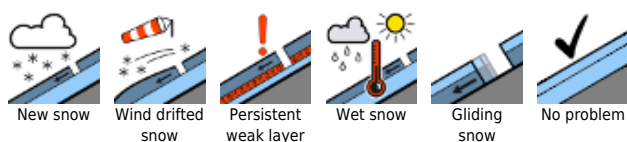
### Snowpack structure

In early morning the snowpack has a crust which is capable of bearing loads, is by and large stable, before the springlike temperatures on sunny slopes transform it to firm snow. Thereafter, the snowpack forfeits its firmness and its bonding. At ground level it is already wet up to high altitudes, which enhances gliding movement of the entire snowpack. Snow depths are below average for this juncture of the season, on sunny slopes there is no snow on the ground up to 1400 m.

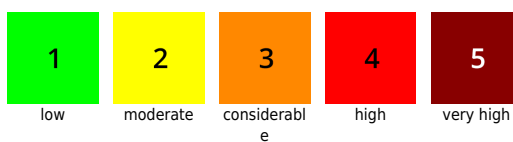
### Outlook

It is getting milder by the day. Typical springtime conditions: due to daytime increase in avalanche danger, begin backcountry tours early, end them early.

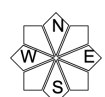
#### Avalanche problems



#### Danger ratings



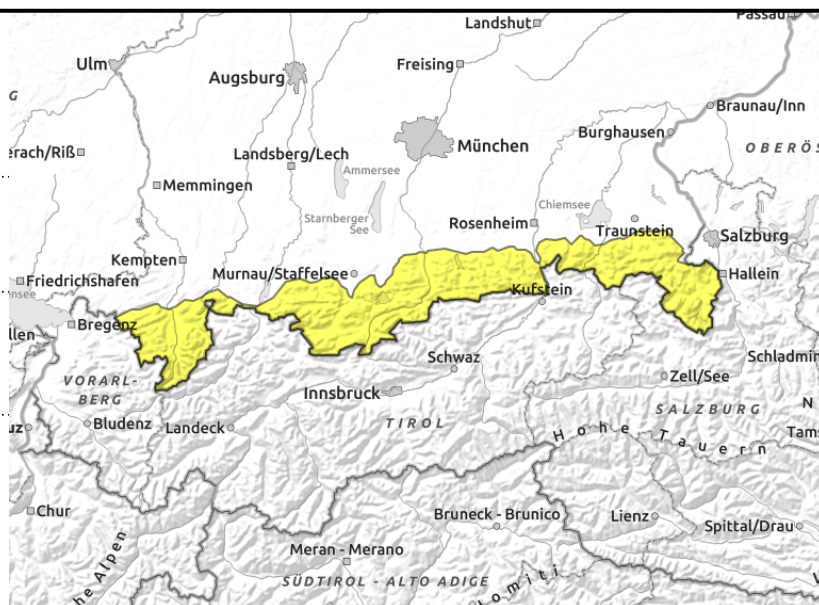
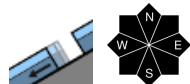
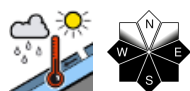
#### Expositions





# 23.03.2022, afternoon

**Allgäuer Vorberge, Allgäuer Hauptkamm, Ammergauer Alpen, Bayerische Voralpen West, Werdenfeller Alpen, Bayerische Voralpen Mitte, Bayerische Voralpen Ost, Chiemgauer Alpen West, Chiemgauer Alpen Ost, Berchtesgadener Alpen**



## Increasing sink-in depths are red flags of wet-snow avalanche danger

Avalanche danger during the day increases from low to moderate. The prevailing problem is wet snow. Danger zones occur particularly on sunny, rocky, steep slopes. During the course of the day, small-to-medium sized wet loose-snow avalanches can trigger naturally or be triggered by skiers. On steep grass-covered slopes and in sparsely wooded zones, in addition, glide-snow avalanches sliding over the smooth ground is possible. This is particularly the case in the Allgäu and in general during the afternoon. Glide-snow avalanches can grow to large size in isolated cases.

### Snowpack structure

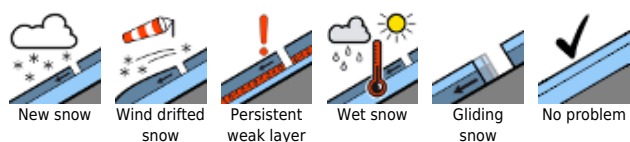
In early morning the snowpack has a crust which is capable of bearing loads, is by and large stable, before the springlike temperatures on sunny slopes transform it to firm snow. Thereafter, the snowpack forfeits its firmness and its bonding. At ground level it is already wet up to high altitudes, which enhances gliding movement of the entire snowpack. Snow depths are below average for this juncture of the season, on sunny slopes there is no snow on the ground up to 1400 m.

### Outlook

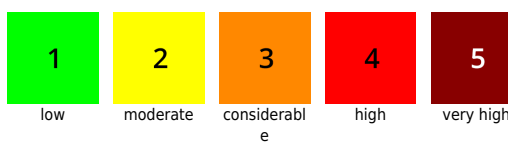
It is getting milder by the day. Typical springtime conditions: due to daytime increase in avalanche danger, begin backcountry tours early, end them early.

Translated by Jeffrey McCabe, [www.creativtrans.com](http://www.creativtrans.com)

#### Avalanche problems



#### Danger ratings



#### Expositions

