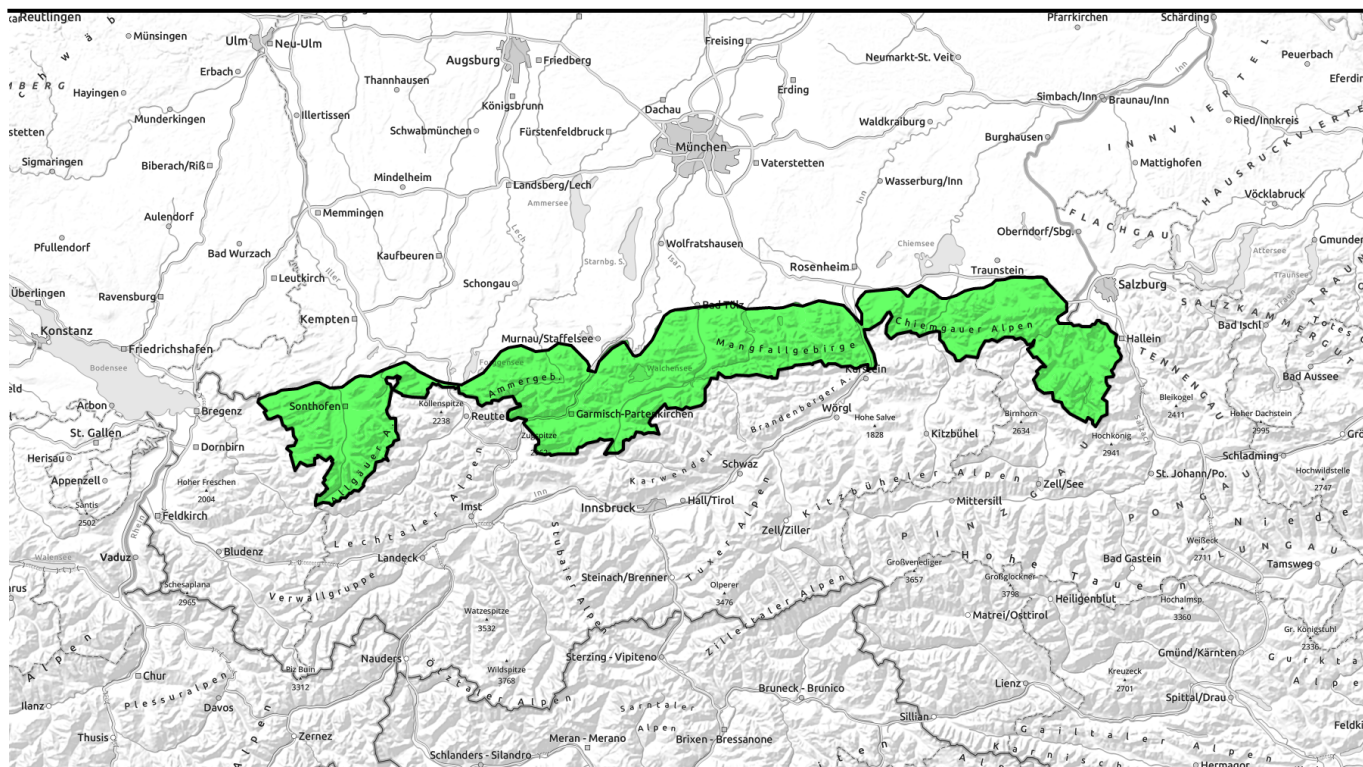




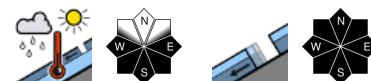
22.03.2022, morning



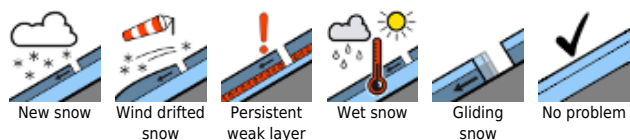
Springtime conditions, daytime increase in avalanche danger



Allgauer Vorberge, Allgauer Hauptkamm, Ammergauer Alpen, Werdenfeller Alpen, Bayerische Voralpen West, Bayerische Voralpen Mitte, Bayerische Voralpen Ost, Chiemgauer Alpen West, Chiemgauer Alpen Ost, Berchtesgadener Alpen



Avalanche problems



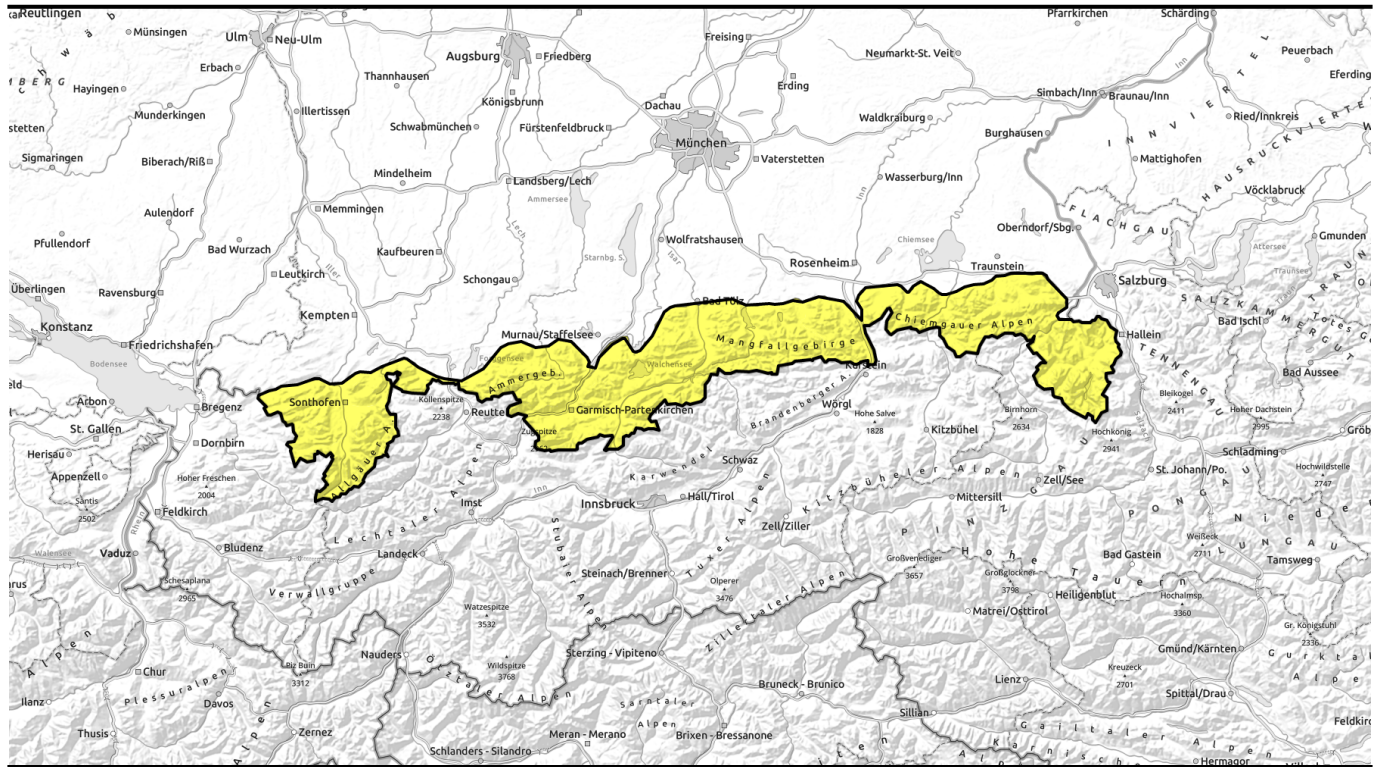
Danger ratings



Expositions



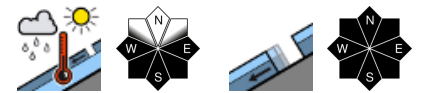
22.03.2022, afternoon



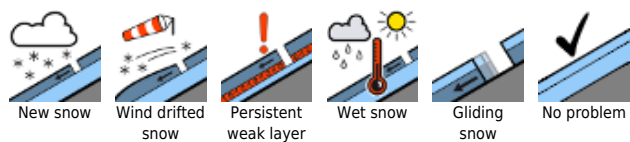
Frühjahrsverhältnisse mit tageszeitlichen Anstieg der Lawinengefahr



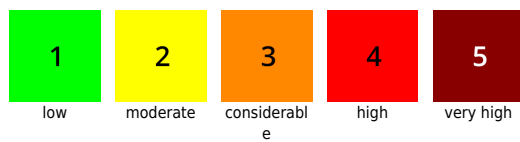
Allgäuer Vorberge, Allgäuer Hauptkamm, Ammergauer Alpen, Werdenfeller Alpen, Bayerische Voralpen West, Bayerische Voralpen Mitte, Bayerische Voralpen Ost, Chiemgauer Alpen West, Chiemgauer Alpen Ost, Berchtesgadener Alpen



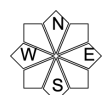
Avalanche problems



Danger ratings

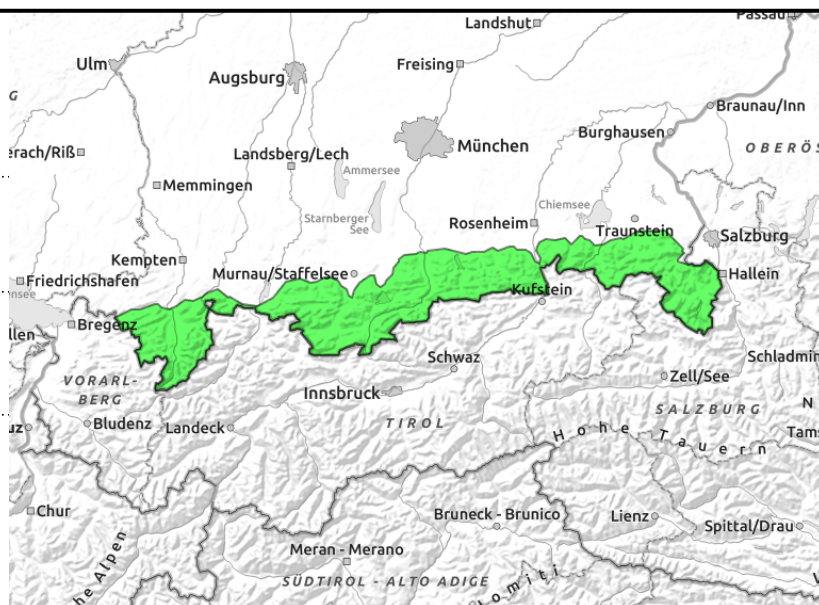
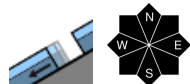
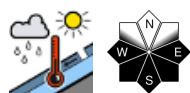


Expositions



22.03.2022, morning

Allgäuer Vorberge, Allgäuer Hauptkamm, Ammergauer Alpen, Werdenfelser Alpen, Bayerische Voralpen West, Bayerische Voralpen Mitte, Bayerische Voralpen Ost, Chiemgauer Alpen West, Chiemgauer Alpen Ost, Berchtesgadener Alpen



Sink-in depths and glide cracks are bellwethers of danger of wet-snow avalanches

Avalanche danger during the day increases from low to moderate. The prevailing problem is wet snow. Danger zones occur particularly on sunny, rocky, steep slopes. During the course of the day, small-to-medium sized wet loose-snow avalanches can trigger naturally or be triggered by skiers. On steep grass-covered slopes and in sparsely wooded zones, in addition, glide-snow avalanches sliding over the smooth ground is possible. This is particularly the case in the Allgäu and in general during the afternoon. Glide-snow avalanches can grow to large size in isolated cases.

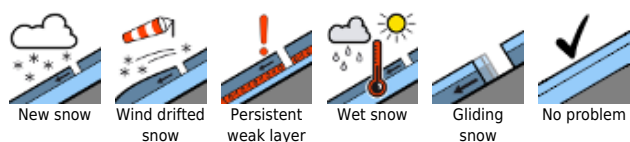
Snowpack structure

In early morning the snowpack has a crust which is capable of bearing loads, is by and large stable, before the springlike temperatures on sunny slopes transform it to firm snow. Thereafter, the snowpack will forfeit its firmness and its bonding. At ground level it is already wet up to high altitudes, which enhances gliding movement of the entire snowpack. Snow depths are below average for this juncture of the season, on sunny slopes there is no snow on the ground up to 1400 m.

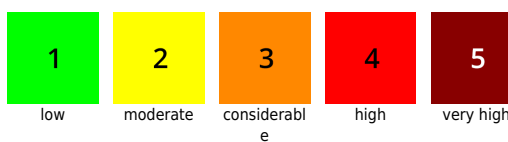
Outlook

Typical springtime conditions, including a daytime danger cycle of avalanche danger, will persist over coming days.

Avalanche problems



Danger ratings

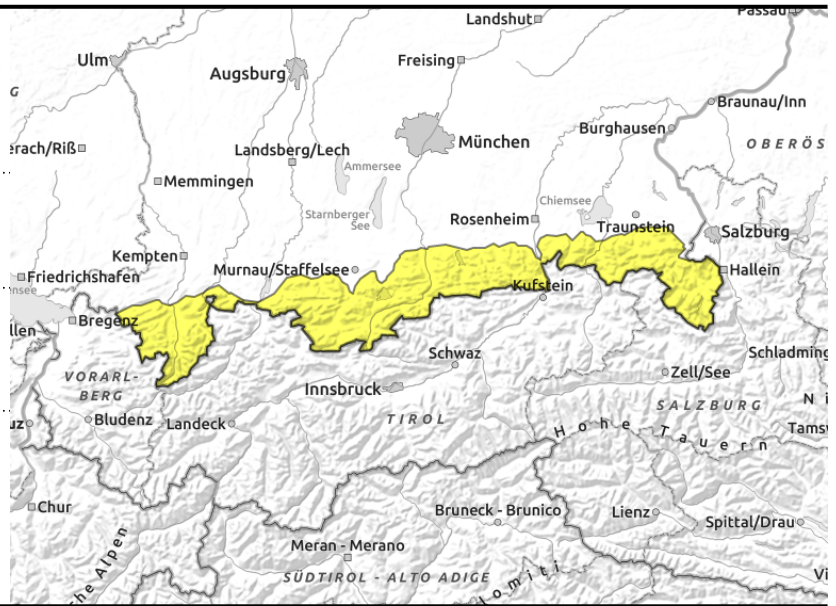
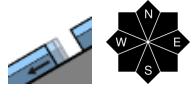
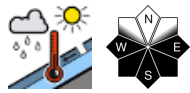


Expositions



22.03.2022, afternoon

Allgäuer Vorberge, Allgäuer Hauptkamm, Ammergauer Alpen, Werdenfelser Alpen, Bayerische Voralpen West, Bayerische Voralpen Mitte, Bayerische Voralpen Ost, Chiemgauer Alpen West, Chiemgauer Alpen Ost, Berchtesgadener Alpen



Sink-in depths and glide cracks are bellwethers of danger of wet-snow avalanches

Avalanche danger during the day increases from low to moderate. The prevailing problem is wet snow. Danger zones occur particularly on sunny, rocky, steep slopes. During the course of the day, small-to-medium sized wet loose-snow avalanches can trigger naturally or be triggered by skiers. On steep grass-covered slopes and in sparsely wooded zones, in addition, glide-snow avalanches sliding over the smooth ground is possible. This is particularly the case in the Allgäu and in general during the afternoon. Glide-snow avalanches can grow to large size in isolated cases.

Snowpack structure

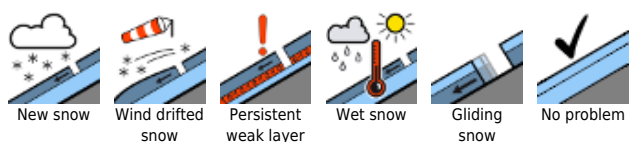
In early morning the snowpack has a crust which is capable of bearing loads, is by and large stable, before the springlike temperatures on sunny slopes transform it to firm snow. Thereafter, the snowpack will forfeit its firmness and its bonding. At ground level it is already wet up to high altitudes, which enhances gliding movement of the entire snowpack. Snow depths are below average for this juncture of the season, on sunny slopes there is no snow on the ground up to 1400 m.

Outlook

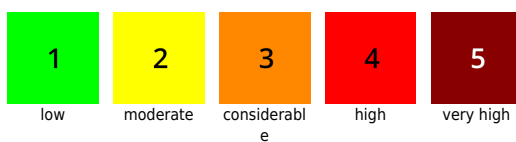
Typical springtime conditions, including a daytime danger cycle of avalanche danger, will persist over coming days.

Translated by Jeffrey McCabe, www.creativtrans.com

Avalanche problems



Danger ratings



Expositions

