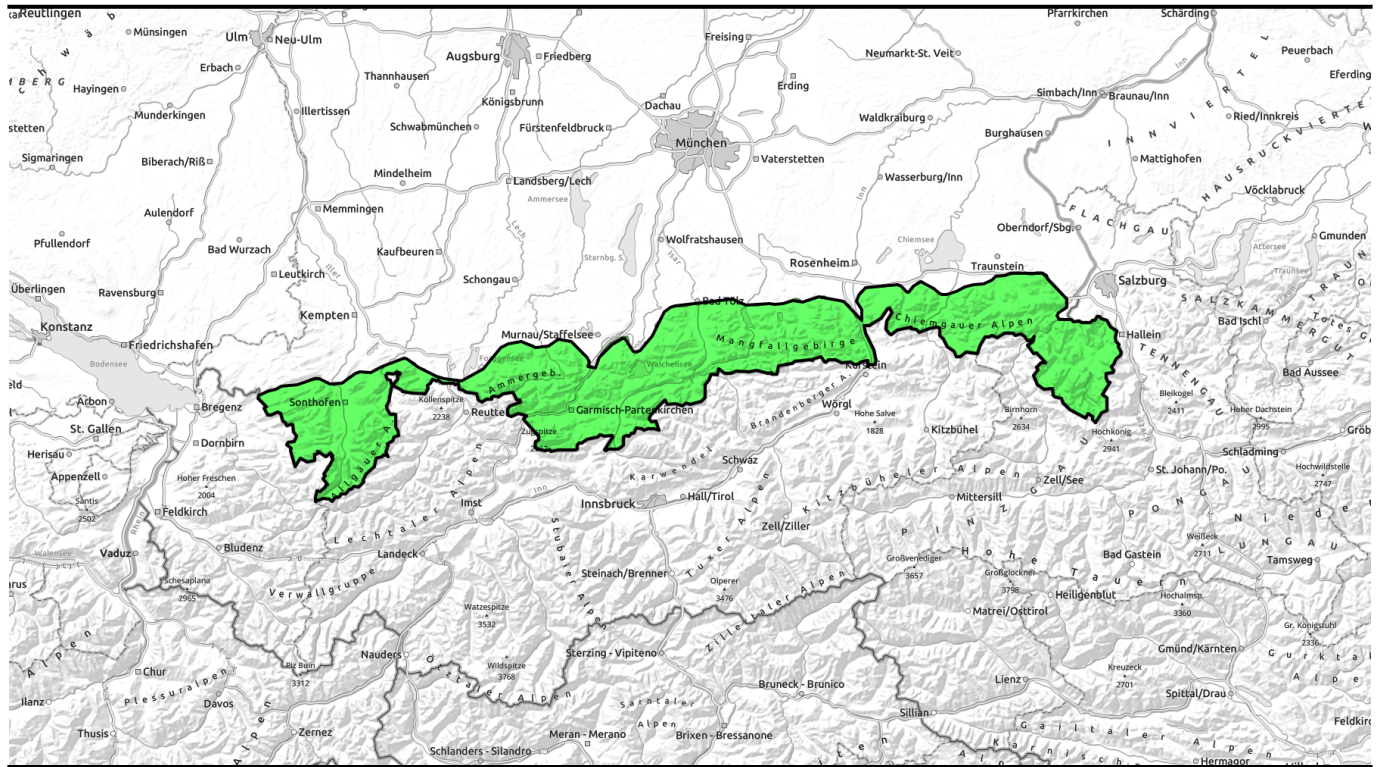


21.03.2022, morning



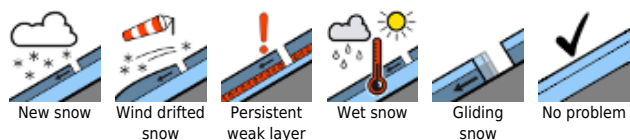
Springtime conditions, alpine tours should begin early, end early



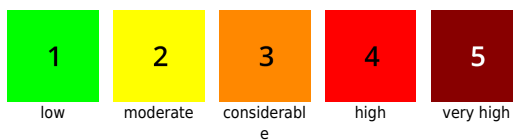
Ammergauer Alpen, Bayerische Voralpen West, Bayerische Voralpen Mitte, Bayerische Voralpen Ost, Chiemgauer Alpen West, Chiemgauer Alpen Ost, Allgäuer Vorberge, Allgäuer Hauptkamm, Werdenfeller Alpen, Berchtesgadener Alpen



Avalanche problems



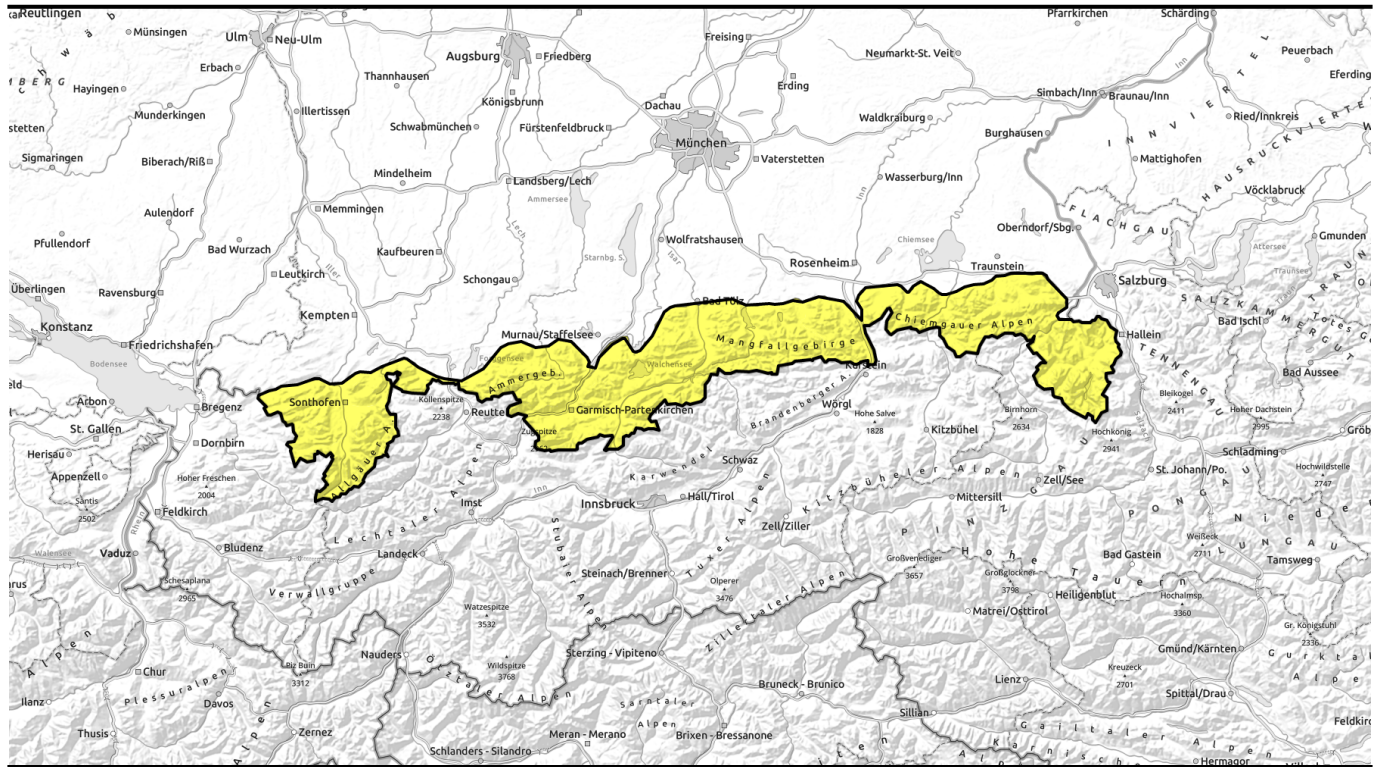
Danger ratings



Expositions



21.03.2022, afternoon



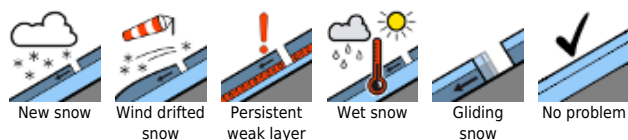
Frühjahrsverhältnisse; alpine Unternehmungen sollten früh begonnen und rechtzeitig beendet werden.



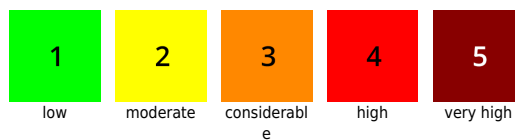
Ammergauer Alpen, Bayerische Voralpen West, Bayerische Voralpen Mitte, Bayerische Voralpen Ost, Chiemgauer Alpen West, Chiemgauer Alpen Ost, Allgäuer Vorberge, Allgäuer Hauptkamm, Werdenfelsee Alpen, Berchtesgadener Alpen



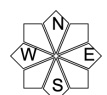
Avalanche problems



Danger ratings

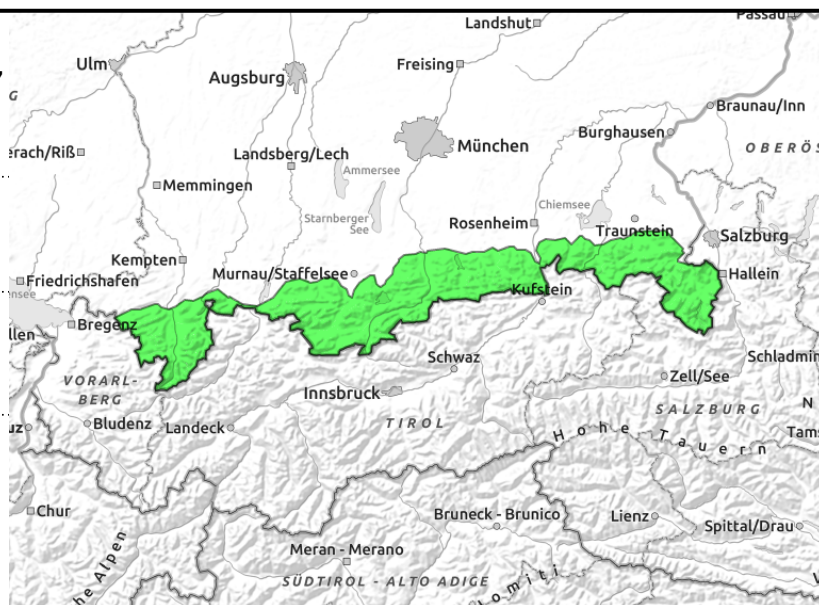
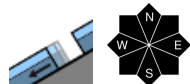
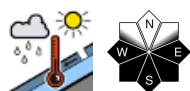


Expositions



21.03.2022, morning

Ammergauer Alpen, Bayerische Voralpen West, Bayerische Voralpen Mitte, Bayerische Voralpen Ost, Chiemgauer Alpen West, Chiemgauer Alpen Ost, Allgäuer Vorberge, Allgäuer Hauptkamm, Werdenfelser Alpen, Berchtesgadener Alpen



Sink-in depths and glide cracks are bellwethers of danger of wet-snow avalanches

Avalanche danger during the day increases from low to moderate. The prevailing problem is wet snow. Danger zones occur particularly on sunny, rocky, steep slopes. During the course of the day, small-to-medium sized wet loose-snow avalanches can trigger naturally or be triggered by skiers. On steep grass-covered slopes and in sparsely wooded zones, in addition, glide-snow avalanches sliding over the smooth ground is possible. This is particularly the case in the Allgäu and in general during the afternoon. Glide-snow avalanches can grow to large size in isolated cases.

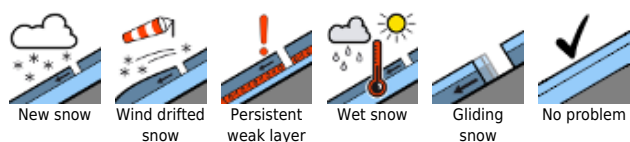
Snowpack structure

In early morning the snowpack will have a crust which is capable of bearing loads, is by and large stable, before the springlike temperatures on sunny slopes transform it to firm snow. Thereafter, the snowpack will forfeit its firmness and its bonding. At ground level it is already wet up to high altitudes, which enhances gliding movement of the entire snowpack. Snow depths are below average for this juncture of the season, on sunny slopes there is no snow on the ground up to 1400 m.

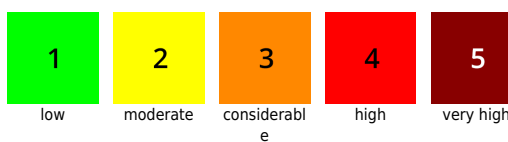
Outlook

Typical springtime conditions, including a daytime danger cycle of avalanche danger, will persist over coming days.

Avalanche problems



Danger ratings

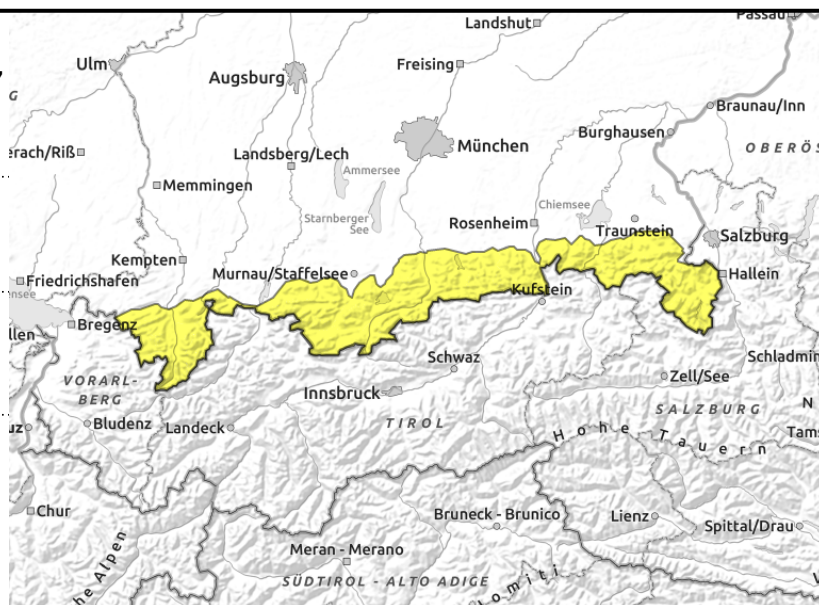
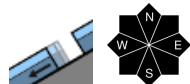
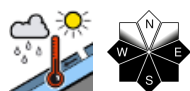


Expositions



21.03.2022, afternoon

Ammergauer Alpen, Bayerische Voralpen West, Bayerische Voralpen Mitte, Bayerische Voralpen Ost, Chiemgauer Alpen West, Chiemgauer Alpen Ost, Allgäuer Vorberge, Allgäuer Hauptkamm, Werdenfelser Alpen, Berchtesgadener Alpen



Sink-in depths and glide cracks are bellwethers of danger of wet-snow avalanches

Avalanche danger during the day increases from low to moderate. The prevailing problem is wet snow. Danger zones occur particularly on sunny, rocky, steep slopes. During the course of the day, small-to-medium sized wet loose-snow avalanches can trigger naturally or be triggered by skiers. On steep grass-covered slopes and in sparsely wooded zones, in addition, glide-snow avalanches sliding over the smooth ground is possible. This is particularly the case in the Allgäu and in general during the afternoon. Glide-snow avalanches can grow to large size in isolated cases.

Snowpack structure

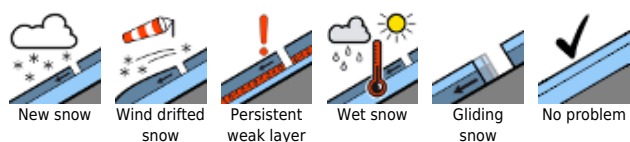
In early morning the snowpack will have a crust which is capable of bearing loads, is by and large stable, before the springlike temperatures on sunny slopes transform it to firm snow. Thereafter, the snowpack will forfeit its firmness and its bonding. At ground level it is already wet up to high altitudes, which enhances gliding movement of the entire snowpack. Snow depths are below average for this juncture of the season, on sunny slopes there is no snow on the ground up to 1400 m.

Outlook

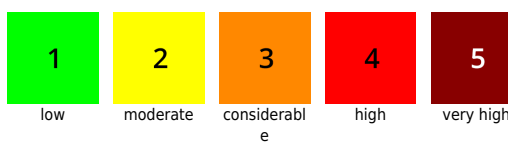
Typical springtime conditions, including a daytime danger cycle of avalanche danger, will persist over coming days.

Translated by Jeffrey McCabe, www.creativtrans.com

Avalanche problems



Danger ratings



Expositions

