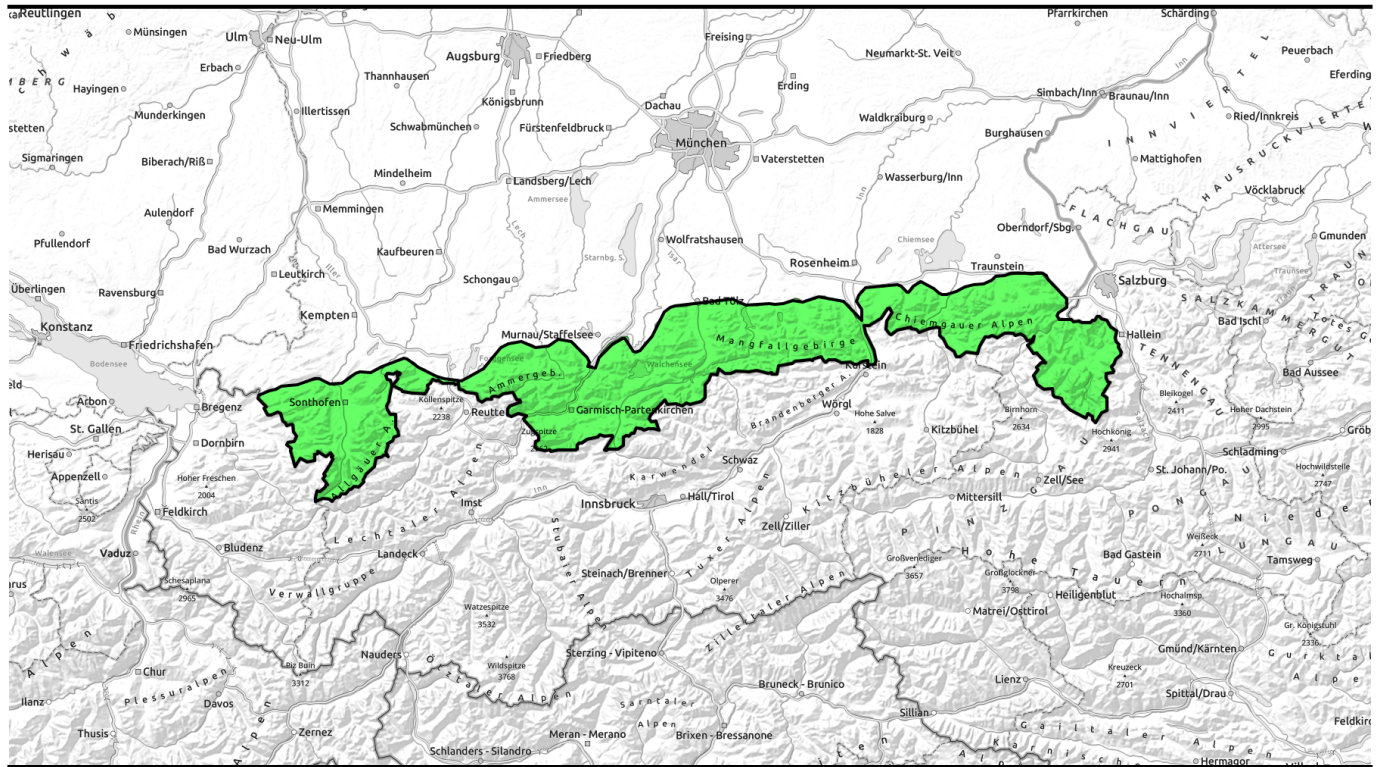


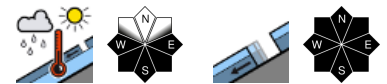
# 20.03.2022, morning



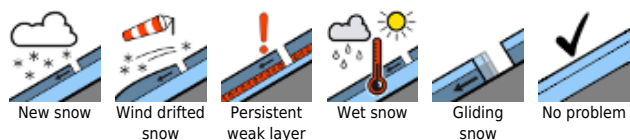
## Springtime conditions; Alpine activities should be launched early and terminated early.



Ammergauer Alpen, Bayerische Voralpen West, Bayerische Voralpen Mitte, Bayerische Voralpen Ost, Chiemgauer Alpen West, Chiemgauer Alpen Ost, Allgäuer Vorberge, Allgäuer Hauptkamm, Werdenfeller Alpen, Berchtesgadener Alpen



### Avalanche problems



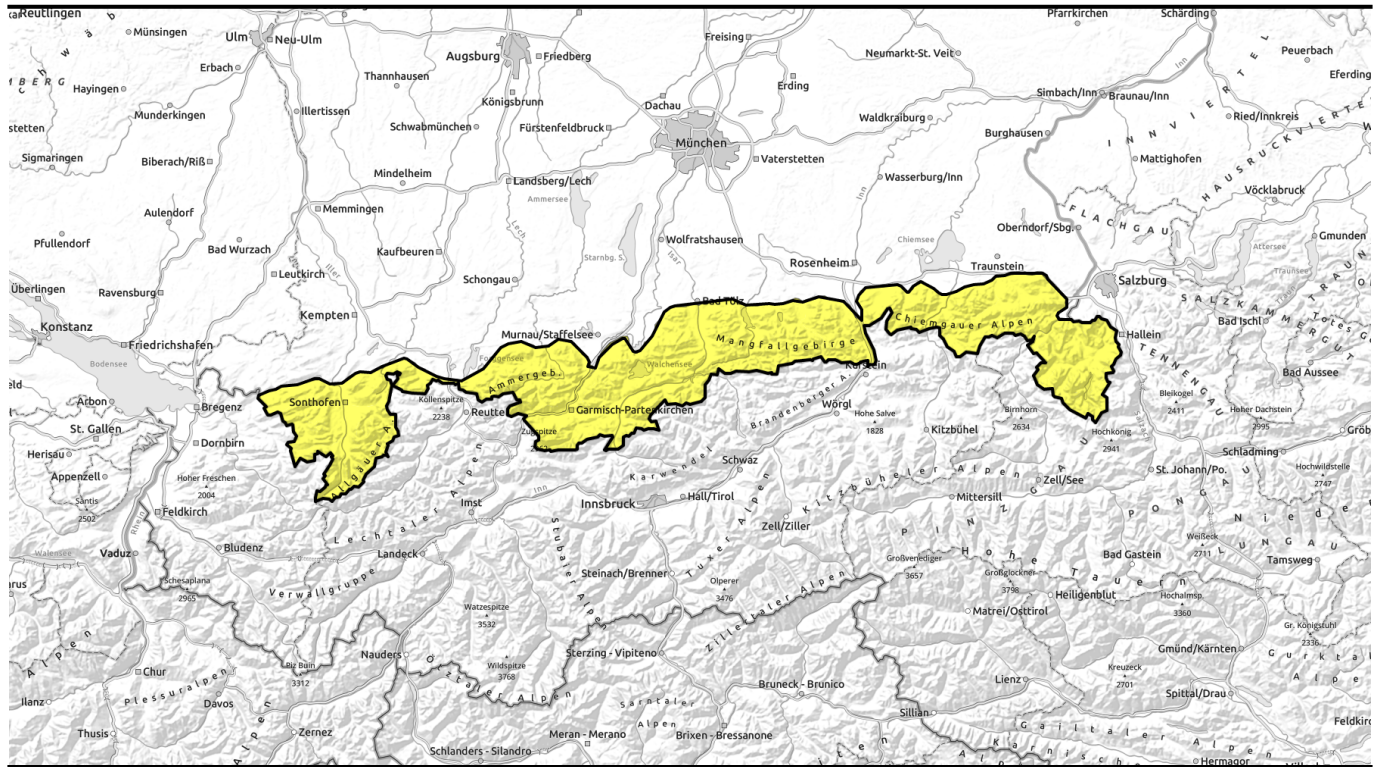
### Danger ratings



### Expositions



# 20.03.2022, afternoon



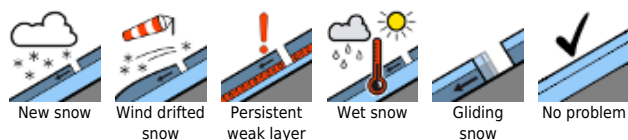
## Frühjahrsverhältnisse; alpine Unternehmungen sollten früh begonnen und rechtzeitig beendet werden.



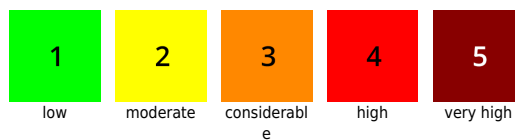
Ammergauer Alpen, Bayerische Voralpen West, Bayerische Voralpen Mitte, Bayerische Voralpen Ost, Chiemgauer Alpen West, Chiemgauer Alpen Ost, Allgäuer Vorberge, Allgäuer Hauptkamm, Werdenfelsee, Berchtesgadener Alpen



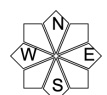
### Avalanche problems



### Danger ratings



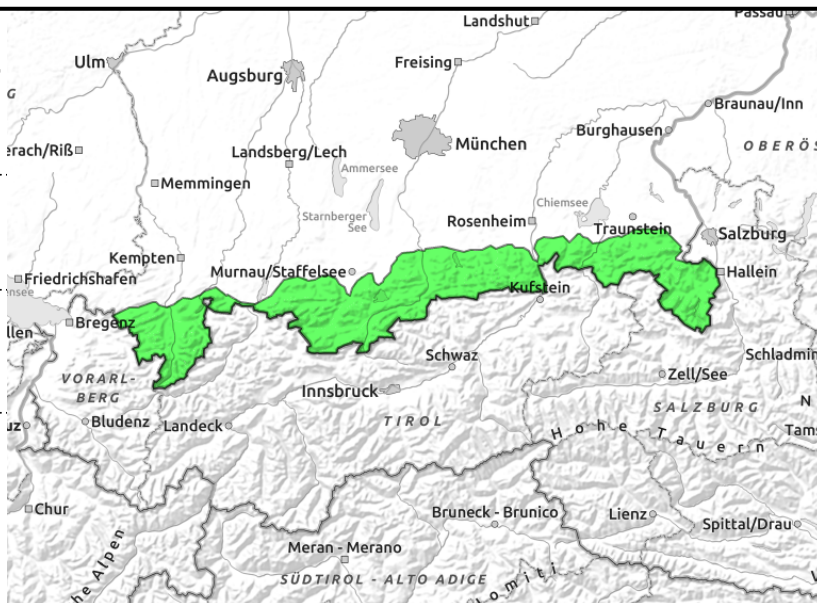
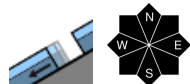
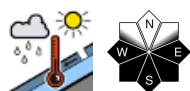
### Expositions





# 20.03.2022, morning

Ammergauer Alpen, Bayerische Voralpen West, Bayerische Voralpen Mitte, Bayerische Voralpen Ost, Chiemgauer Alpen West, Chiemgauer Alpen Ost, Allgäuer Vorberge, Allgäuer Hauptkamm, Werdenfelser Alpen, Berchtesgadener Alpen



## Deep sink-in depths and glide cracks indicate a wet snow avalanche daytime danger cycle.

Daytime avalanche danger will rise from low to moderate. The predominant avalanche problem is wet snow. Avalanche prone locations are mainly found in steep sunny rocky terrain. During the course of the day, small to medium-sized wet loose snow avalanches can release naturally or can be triggered by a single individual engaged in wintersports.

In addition it is possible that glide snow avalanches start gliding over the smooth ground on steep grass-covered slopes and forest clearances. This relates in particular to the Allgäu Alps. In isolated cases glide snow avalanches can even grow to large size.

### Snowpack structure

Widespread melt-freeze crusts capable of bearing loads prevail in the morning that soften during the day in sunny terrain. Thus the snowpack forfeits its firmness and cohesion. Up to high altitude the snowpack underneath the melt-freeze crust is thoroughly moist down to the ground and at the ground partly wet which promotes gliding of the snowpack. All in all, snow depths are below average; up to about 1400m the ground on sunny slopes has become almost bare.

### Outlook

Typical springtime conditions with daytime avalanche danger cycle will continue to prevail for the time being.

#### Avalanche problems



#### Danger ratings



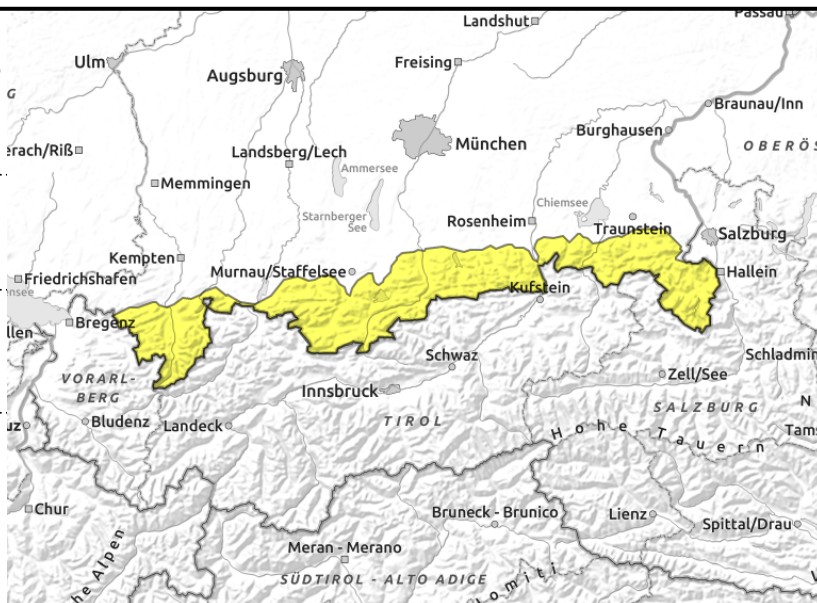
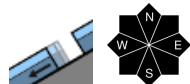
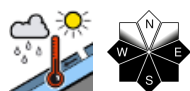
#### Expositions





# 20.03.2022, afternoon

**Ammergauer Alpen, Bayerische Voralpen West, Bayerische Voralpen Mitte, Bayerische Voralpen Ost, Chiemgauer Alpen West, Chiemgauer Alpen Ost, Allgäuer Vorberge, Allgäuer Hauptkamm, Werdenfeller Alpen, Berchtesgadener Alpen**



## Deep sink-in depths and glide cracks indicate a wet snow avalanche daytime danger cycle.

Daytime avalanche danger will rise from low to moderate. The predominant avalanche problem is wet snow. Avalanche prone locations are mainly found in steep sunny rocky terrain. During the course of the day, small to medium-sized wet loose snow avalanches can release naturally or can be triggered by a single individual engaged in wintersports.

In addition it is possible that glide snow avalanches start gliding over the smooth ground on steep grass-covered slopes and forest clearances. This relates in particular to the Allgäu Alps. In isolated cases glide snow avalanches can even grow to large size.

### Snowpack structure

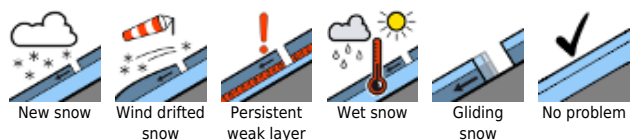
Widespread melt-freeze crusts capable of bearing loads prevail in the morning that soften during the day in sunny terrain. Thus the snowpack forfeits its firmness and cohesion. Up to high altitude the snowpack underneath the melt-freeze crust is thoroughly moist down to the ground and at the ground partly wet which promotes gliding of the snowpack. All in all, snow depths are below average; up to about 1400m the ground on sunny slopes has become almost bare.

### Outlook

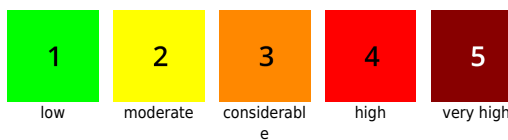
Typical springtime conditions with daytime avalanche danger cycle will continue to prevail for the time being.

Translated by Jeffrey McCabe, [www.creativtrans.com](http://www.creativtrans.com)

#### Avalanche problems



#### Danger ratings



#### Expositions

