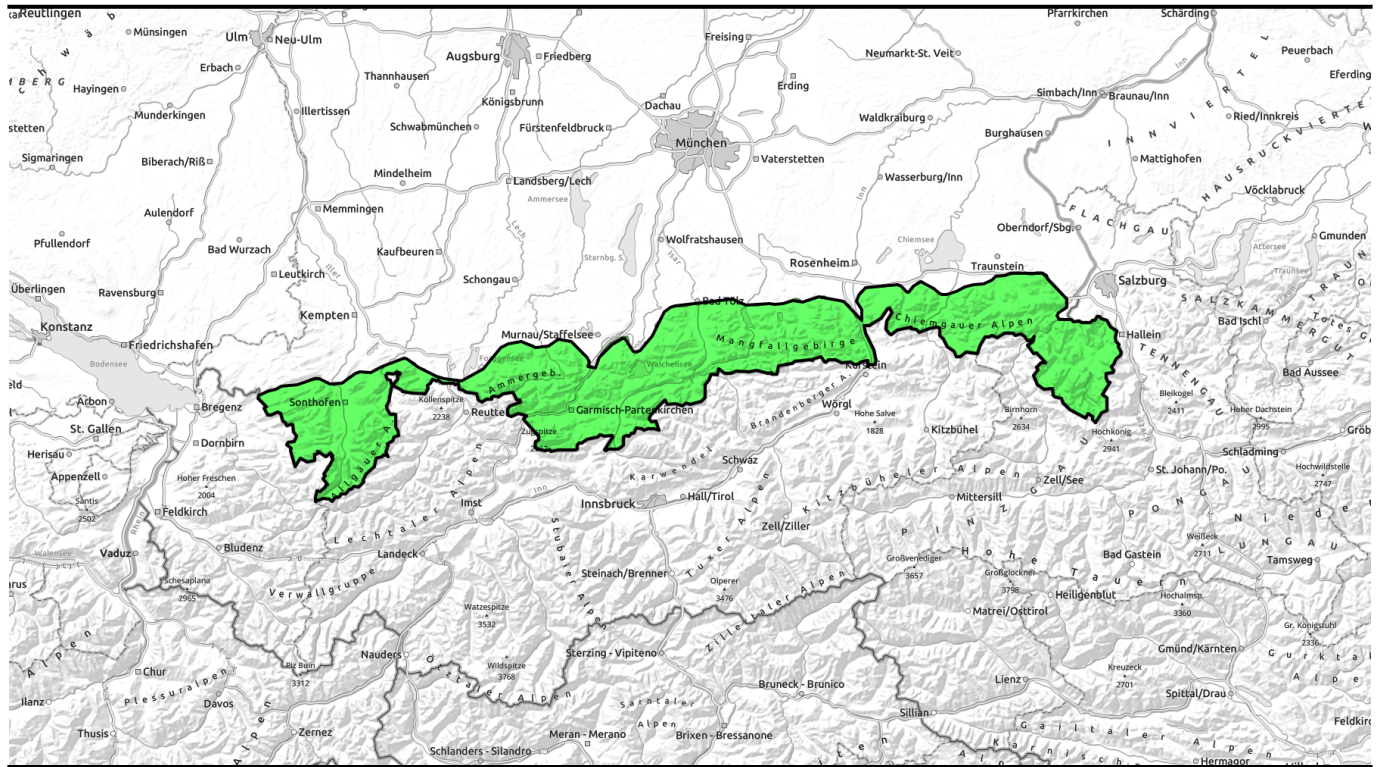




19.03.2022, morning



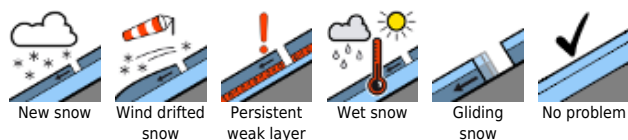
Springtime conditions; Alpine activities should be launched early and terminated early.



Ammergauer Alpen, Bayerische Voralpen West, Bayerische Voralpen Mitte, Bayerische Voralpen Ost, Chiemgauer Alpen West, Chiemgauer Alpen Ost, Allgäuer Vorberge, Allgäuer Hauptkamm, Werdenfeller Alpen, Berchtesgadener Alpen



Avalanche problems



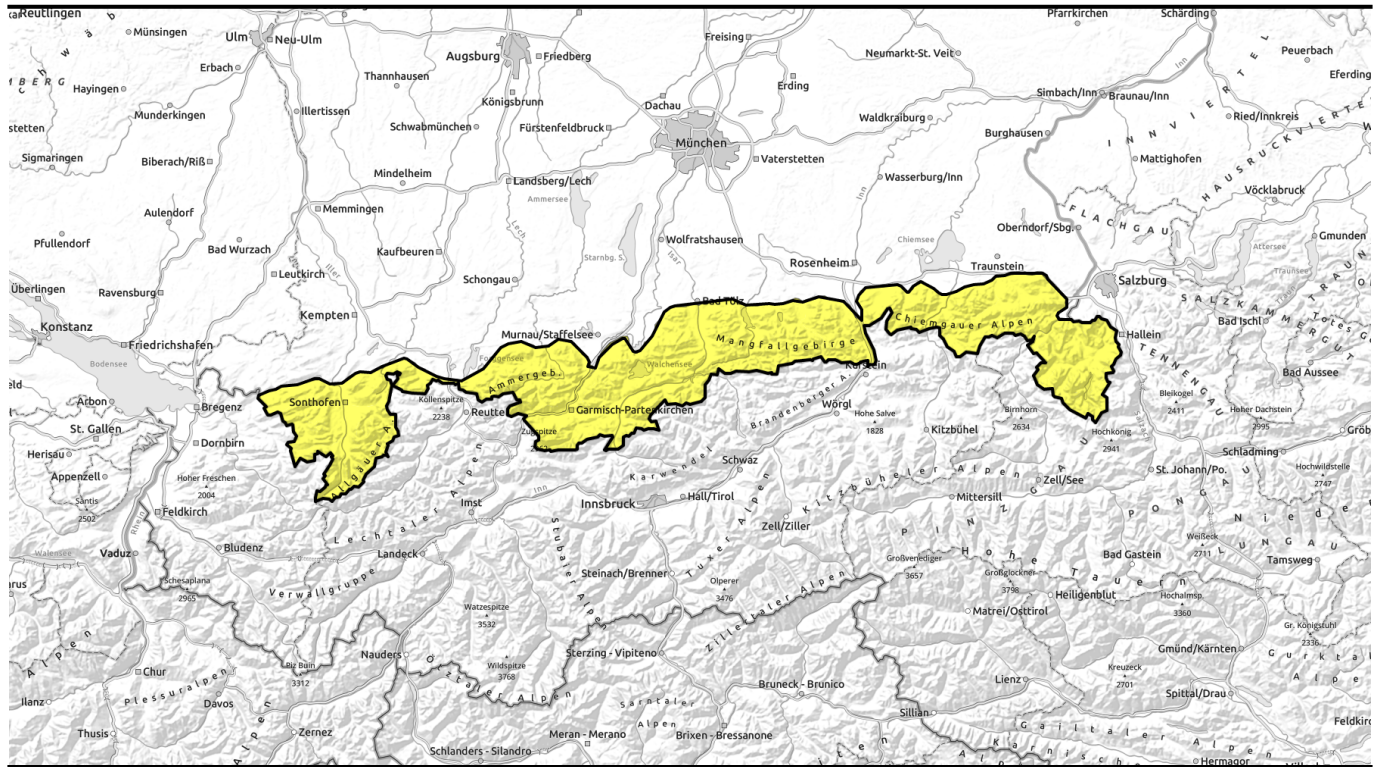
Danger ratings



Expositions



19.03.2022, afternoon



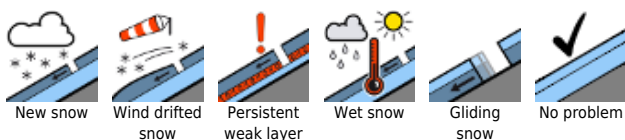
Frühjahrsverhältnisse; alpine Unternehmungen sollten früh begonnen und rechtzeitig beendet werden.



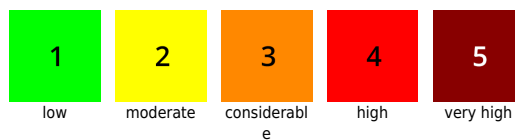
Ammergauer Alpen, Bayerische Voralpen West, Bayerische Voralpen Mitte, Bayerische Voralpen Ost, Chiemgauer Alpen West, Chiemgauer Alpen Ost, Allgäuer Vorberge, Allgäuer Hauptkamm, Werdenfelsee, Berchtesgadener Alpen



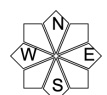
Avalanche problems



Danger ratings



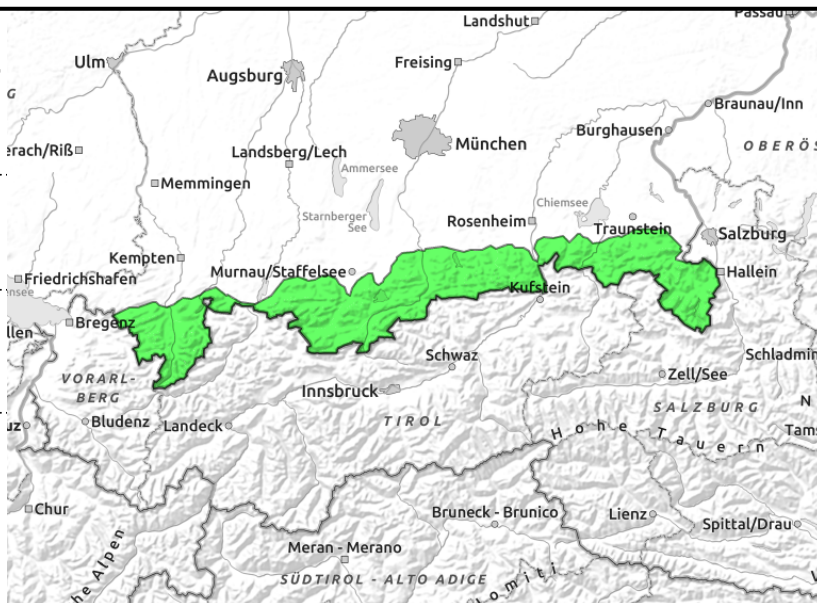
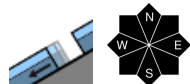
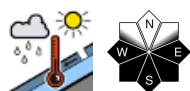
Expositions





19.03.2022, morning

Ammergauer Alpen, Bayerische Voralpen West, Bayerische Voralpen Mitte, Bayerische Voralpen Ost, Chiemgauer Alpen West, Chiemgauer Alpen Ost, Allgäuer Vorberge, Allgäuer Hauptkamm, Werdenfeller Alpen, Berchtesgadener Alpen



Deep sink-in depths and glide cracks indicate an increasing wet snow avalanche daytime danger cycle.

Daytime avalanche danger will rise from low to moderate. The predominant avalanche problem is wet snow. Avalanche prone locations are mainly found in steep sunny rocky terrain. During the course of the day, small to medium-sized wet loose snow avalanches can release naturally or can be triggered by a single individual engaged in wintersports.

In addition it is possible that isolated glide snow avalanches start gliding over the smooth ground on steep grass-covered slopes. Glide snow avalanches can even grow to large size.

Snowpack structure

The impact of the Saharan dust lessens, cloudiness diminishes, temperatures are dropping and the snowpack stabilizes significantly during a clear Friday night. Widespread melt-freeze crusts capable of bearing loads prevail in the morning that soften during the day in sunny terrain. Thus the snowpack forfeits its firmness and cohesion. Up to high altitude the snowpack underneath the melt-freeze crust is widespread thoroughly moist down to the ground which promotes gliding of the snowpack. In the last few days the snow depth has significantly decreased; on the sunny side the ground is almost bare up to about 1400m.

Outlook

Typical springtime conditions with daytime avalanche danger cycle will prevail for the time being.

Avalanche problems



Danger ratings

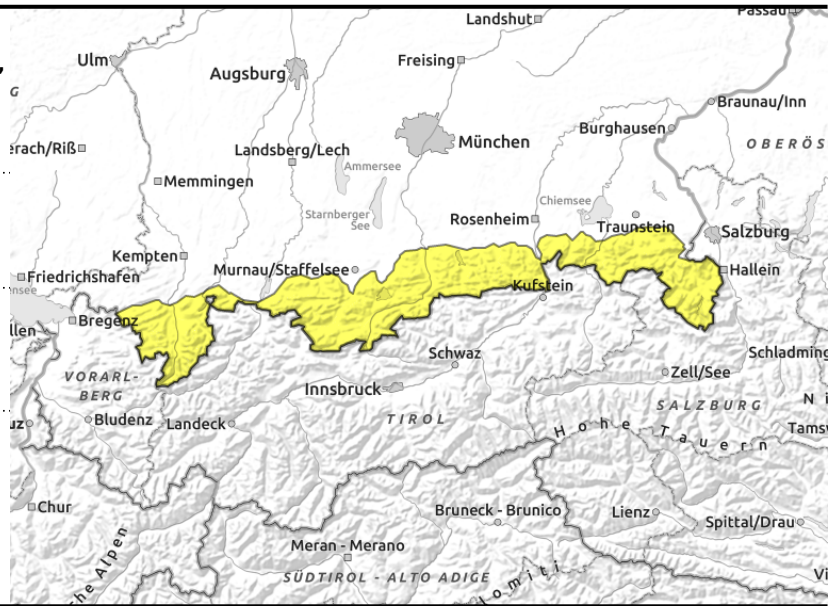
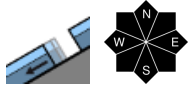
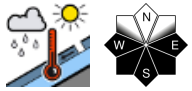


Expositions



19.03.2022, afternoon

Ammergauer Alpen, Bayerische Voralpen West, Bayerische Voralpen Mitte, Bayerische Voralpen Ost, Chiemgauer Alpen West, Chiemgauer Alpen Ost, Allgäuer Vorberge, Allgäuer Hauptkamm, Werdenfelser Alpen, Berchtesgadener Alpen



Deep sink-in depths and glide cracks indicate an increasing wet snow avalanche daytime danger cycle.

Daytime avalanche danger will rise from low to moderate. The predominant avalanche problem is wet snow. Avalanche prone locations are mainly found in steep sunny rocky terrain. During the course of the day, small to medium-sized wet loose snow avalanches can release naturally or can be triggered by a single individual engaged in wintersports.

In addition it is possible that isolated glide snow avalanches start gliding over the smooth ground on steep grass-covered slopes. Glide snow avalanches can even grow to large size.

Snowpack structure

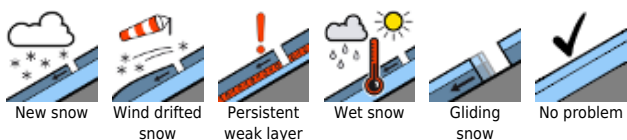
The impact of the Saharan dust lessens, cloudiness diminishes, temperatures are dropping and the snowpack stabilizes significantly during a clear Friday night. Widespread melt-freeze crusts capable of bearing loads prevail in the morning that soften during the day in sunny terrain. Thus the snowpack forfeits its firmness and cohesion. Up to high altitude the snowpack underneath the melt-freeze crust is widespread thoroughly moist down to the ground which promotes gliding of the snowpack. In the last few days the snow depth has significantly decreased; on the sunny side the ground is almost bare up to about 1400m.

Outlook

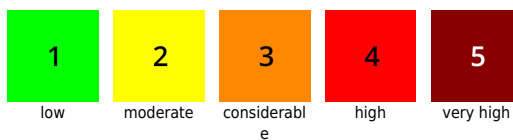
Typical springtime conditions with daytime avalanche danger cycle will prevail for the time being.

Translated by Jeffrey McCabe, www.creativtrans.com

Avalanche problems



Danger ratings



Expositions

