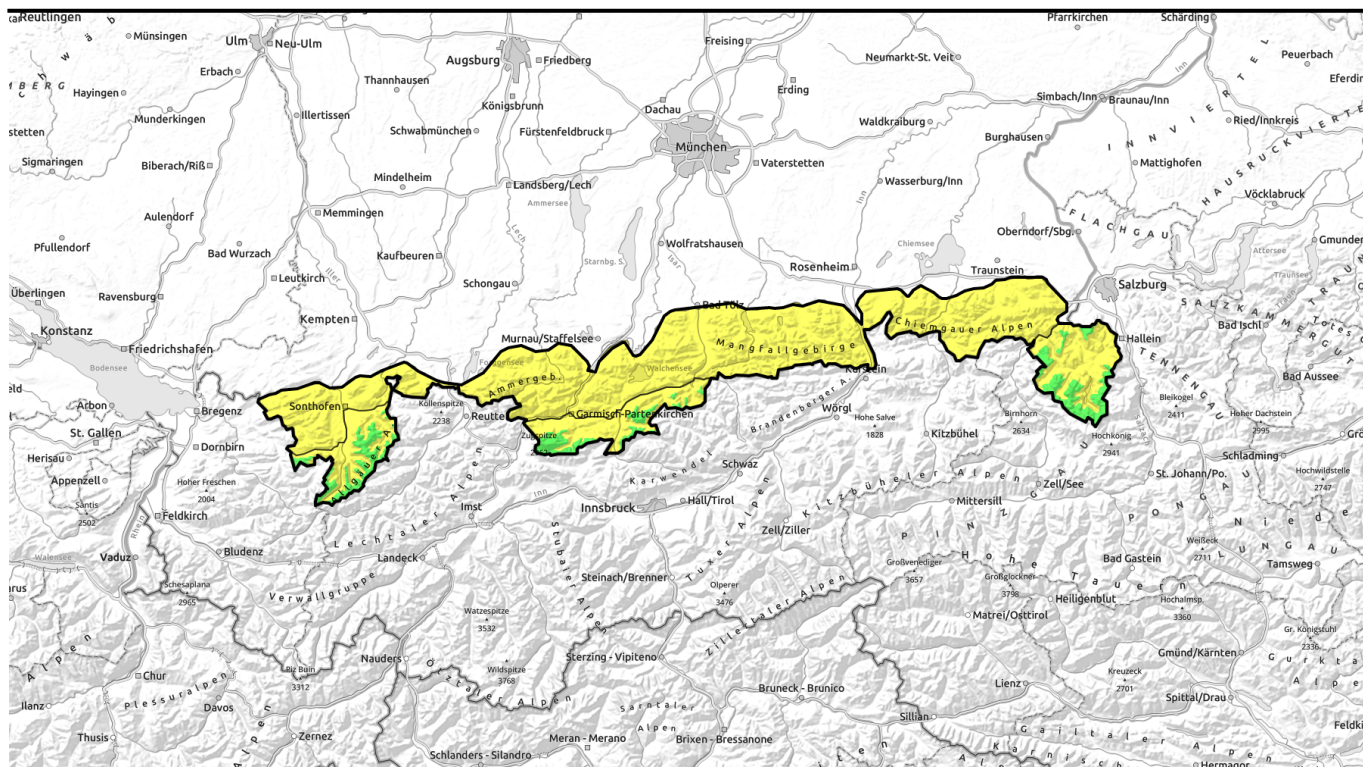


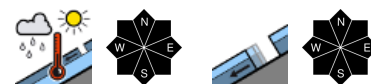
18.03.2022, morning



At intermediate altitudes the snowpack softens quickly during the course of the day. At high altitudes the situation is more favorable in the morning.



Ammergauer Alpen, Bayerische Voralpen West, Bayerische Voralpen Mitte, Bayerische Voralpen Ost, Chiemgauer Alpen West, Chiemgauer Alpen Ost, Allgäuer Vorberge

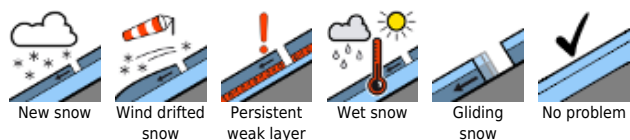


2000 m

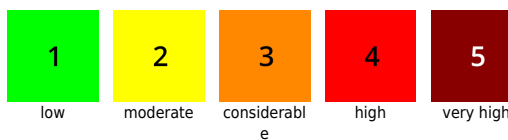
Allgäuer Hauptkamm, Werdenfelser Alpen, Berchtesgadener Alpen



Avalanche problems



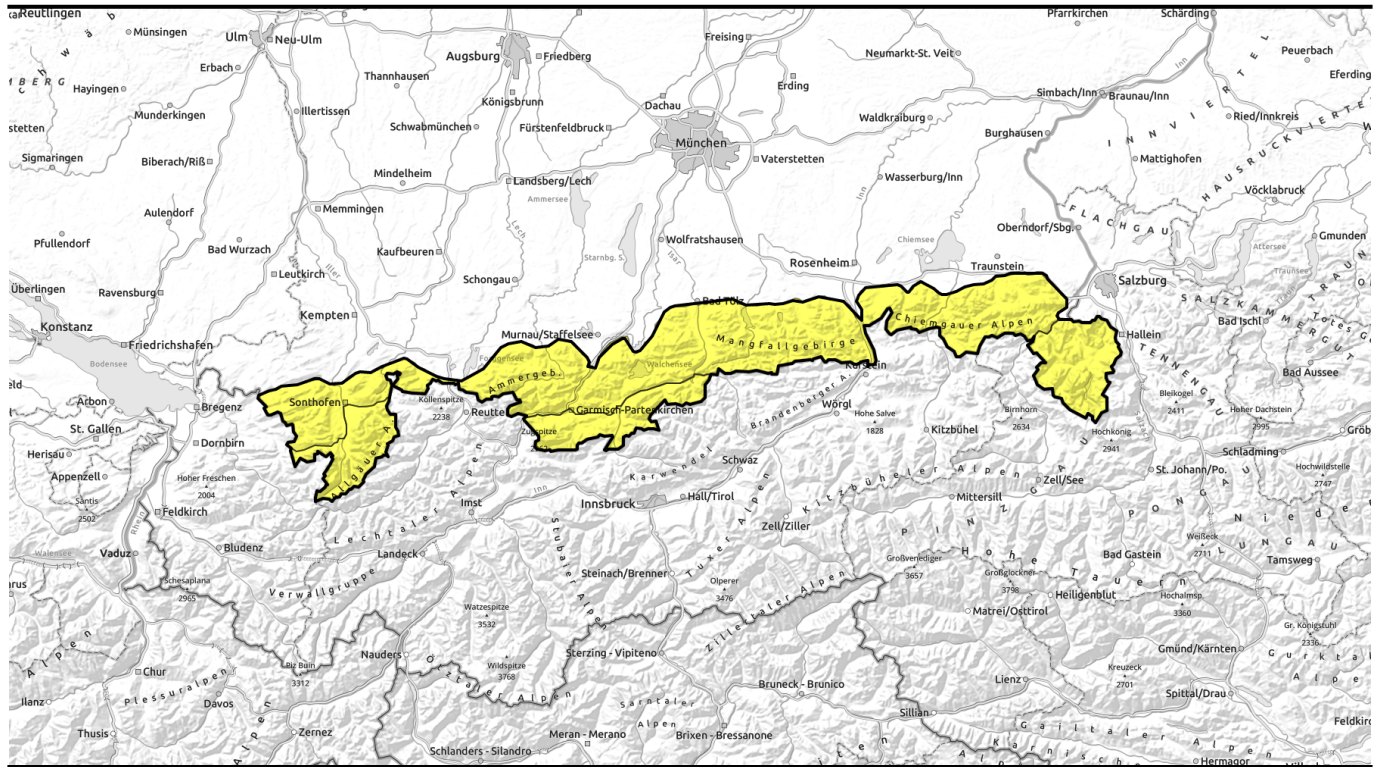
Danger ratings



Expositions



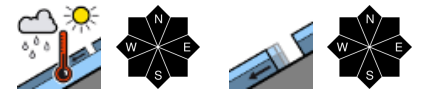
18.03.2022, afternoon



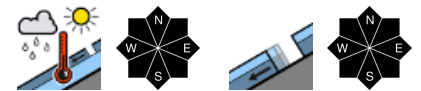
Die Schneedecke weicht tagsüber in den mittleren Lagen rasch auf. In den Hochlagen ist die Situation vormittags günstiger.



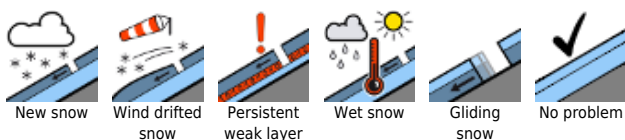
Ammergauer Alpen, Bayerische Voralpen West, Bayerische Voralpen Mitte, Bayerische Voralpen Ost, Chiemgauer Alpen West, Chiemgauer Alpen Ost, Allgäuer Vorberge



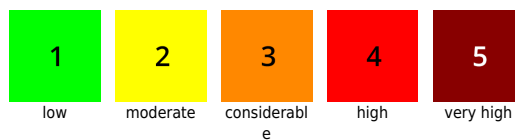
Allgäuer Hauptkamm, Werdenfeller Alpen, Berchtesgadener Alpen



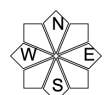
Avalanche problems



Danger ratings

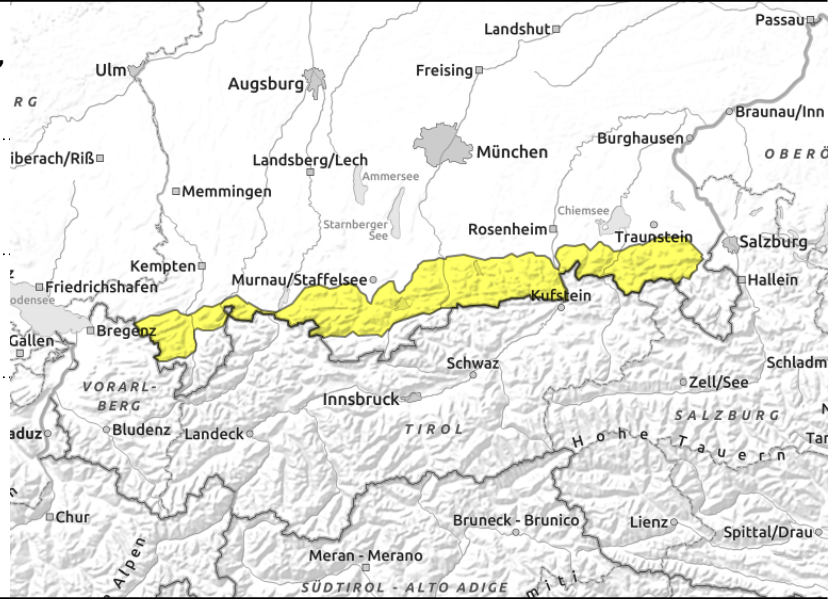
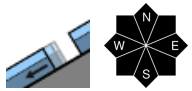


Expositions



18.03.2022

Ammergauer Alpen, Bayerische Voralpen West, Bayerische Voralpen Mitte, Bayerische Voralpen Ost, Chiemgauer Alpen West, Chiemgauer Alpen Ost, Allgäuer Vorberge



Increasing sink-in depths in the terrain indicate a softening of the snowpack.

Avalanche danger is moderate. The predominant avalanche problem is wet snow. In line with a minor avalanche danger cycle small to medium-sized wet loose snow avalanches can release in steep rocky terrain in all aspects. It is in addition possible that glide snow avalanches start gliding over the smooth ground on steep grass-covered slopes and in forest clearances which can grow to large size in isolated cases.

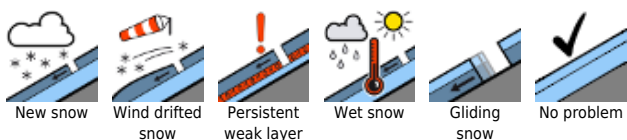
Snowpack structure

Up to summit altitudes the snowpack is thoroughly wet down to the ground. Since the night will be cloudy only a thin melt-freeze crust can form which softens swiftly during the day. When softening the snowpack forfeits its firmness and bonding. Frequently even the snowpack base has become wet which promotes gliding of the snowpack. On sunny slopes the ground is almost bare up to about 1400m.

Outlook

As a consequence of high pressure weather there will be a clear wet snow avalanche danger cycle in the next few days with favorable conditions in the morning.

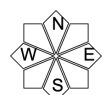
Avalanche problems



Danger ratings

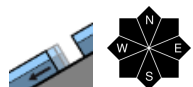
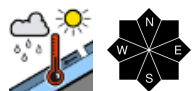


Expositions



18.03.2022, morning

Allgäuer Hauptkamm, Werdenfeller Alpen, Berchtesgadener Alpen



Increasing sink-in depths in the terrain indicate a softening of the snowpack.

Avalanche danger below 2000m is moderate; above it rises from low to moderate during the course of the day. The predominant avalanche problem is wet snow. Since temperatures are rising during the course of the day, small to medium-sized wet loose snow avalanches can release naturally mainly in the afternoon in steep rocky terrain in all aspects. It is in addition possible that glide snow avalanches start gliding over the smooth ground on steep grass-covered slopes and in forest clearances which can grow to large size in isolated cases.

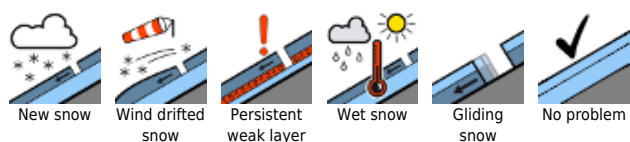
Snowpack structure

Especially at intermediate altitudes the snowpack is thoroughly moist down to the ground. Since the night will be cloudy only a thin melt-freeze crust can form at intermediate altitudes which softens swiftly during the day. When softening the snowpack forfeits its firmness and bonding. Frequently even the snowpack base has become wet which promotes gliding of the snowpack. At high altitudes the temperatures are cooler and therefore the melt-free crusts keep a bit longer. At highest summit altitudes, small-scale snowdrifts can still be triggerable. On sunny slopes the ground is almost bare up to about 1400m.

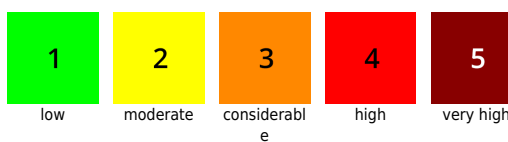
Outlook

As a consequence of high pressure weather there will be a clear wet snow avalanche danger cycle in the next few days with favorable conditions in the morning.

Avalanche problems



Danger ratings

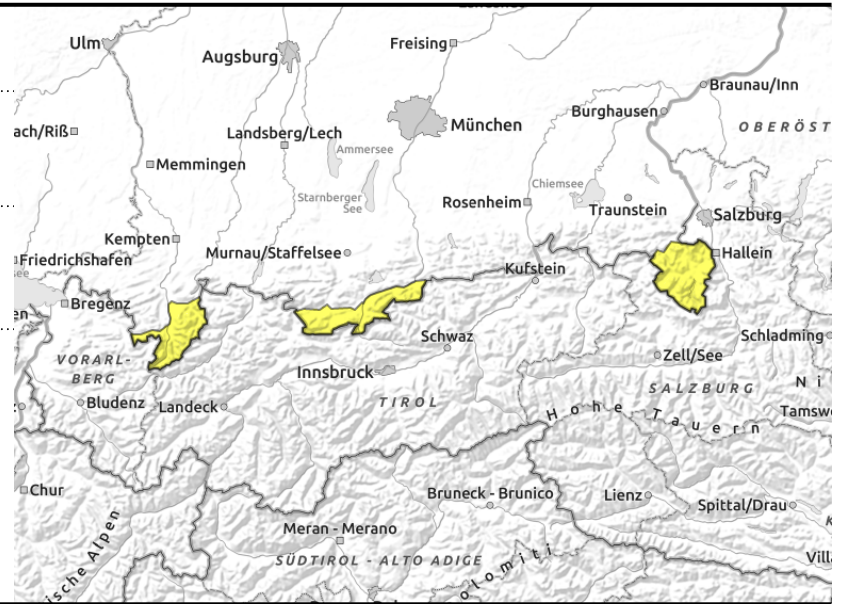
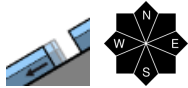
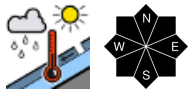


Expositions



18.03.2022, afternoon

Allgäuer Hauptkamm, Werdenfeller Alpen, Berchtesgadener Alpen



Increasing sink-in depths in the terrain indicate a softening of the snowpack.

Avalanche danger below 2000m is moderate; above it rises from low to moderate during the course of the day. The predominant avalanche problem is wet snow. Since temperatures are rising during the course of the day, small to medium-sized wet loose snow avalanches can release naturally mainly in the afternoon in steep rocky terrain in all aspects. It is in addition possible that glide snow avalanches start gliding over the smooth ground on steep grass-covered slopes and in forest clearances which can grow to large size in isolated cases.

Snowpack structure

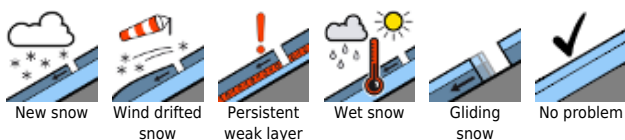
Especially at intermediate altitudes the snowpack is thoroughly moist down to the ground. Since the night will be cloudy only a thin melt-freeze crust can form at intermediate altitudes which softens swiftly during the day. When softening the snowpack forfeits its firmness and bonding. Frequently even the snowpack base has become wet which promotes gliding of the snowpack. At high altitudes the temperatures are cooler and therefore the melt-free crusts keep a bit longer. At highest summit altitudes, small-scale snowdrifts can still be triggerable. On sunny slopes the ground is almost bare up to about 1400m.

Outlook

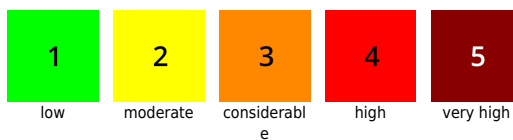
As a consequence of high pressure weather there will be a clear wet snow avalanche danger cycle in the next few days with favorable conditions in the morning.

Translated by Jeffrey McCabe, www.creativtrans.com

Avalanche problems



Danger ratings



Expositions

