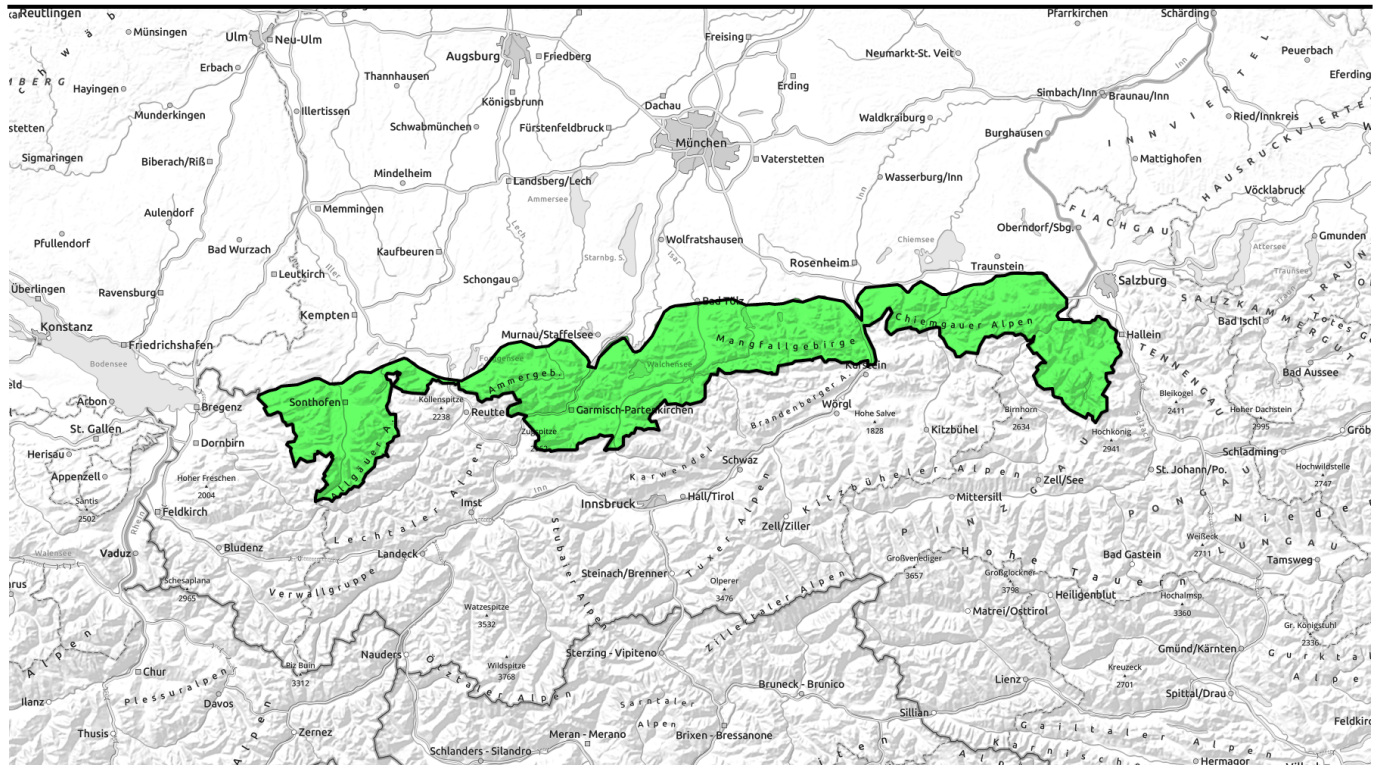


14.03.2022



Still favorable conditions in the Bavarian Alps.



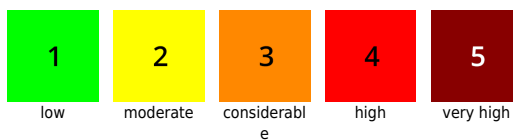
Allgäuer Vorberge, Allgäuer Hauptkamm, Ammergauer Alpen, Bayerische Voralpen West, Werdenfeller Alpen, Bayerische Voralpen Mitte, Bayerische Voralpen Ost, Chiemgauer Alpen West, Chiemgauer Alpen Ost, Berchtesgadener Alpen



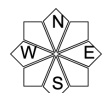
Avalanche problems



Danger ratings



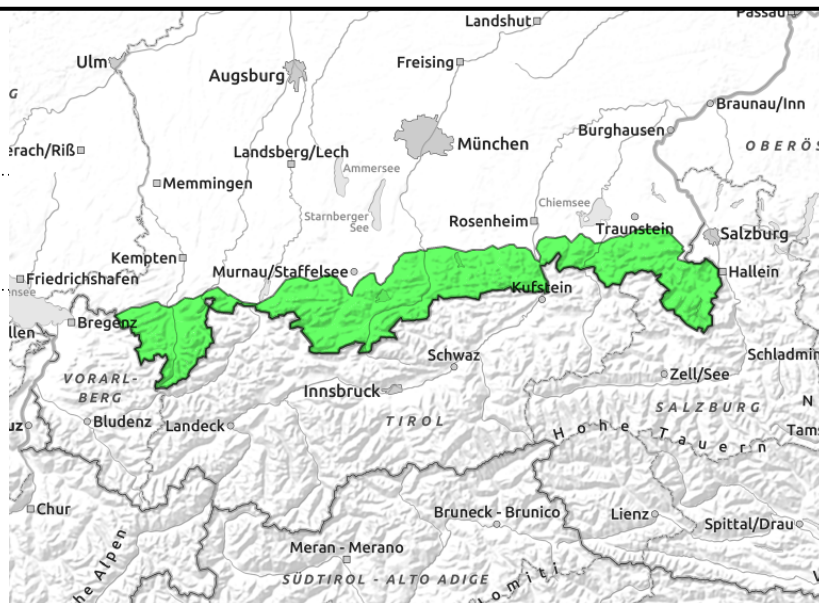
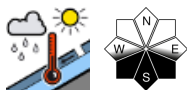
Expositions





14.03.2022

Allgäuer Vorberge, Allgäuer Hauptkamm, Ammergauer Alpen, Bayerische Voralpen West, Werdenfeller Alpen, Bayerische Voralpen Mitte, Bayerische Voralpen Ost, Chiemgauer Alpen West, Chiemgauer Alpen Ost, Berchtesgadener Alpen



Small wet loose snow avalanches possible in sunny steep terrain.

Avalanche danger in the Bavarian Alps is low. As a result of the rising temperatures, the wet-snow problem gains in importance. On sunny slopes in the latter part of the day, small wet loose-snow avalanches can trigger naturally in steep rocky terrain. Isolated small glide snow avalanches can start sliding over the smooth ground on steep grass-covered slopes.

Snowpack structure

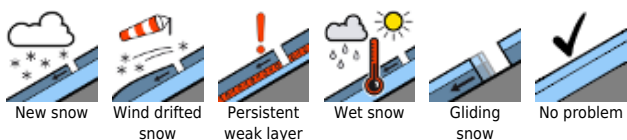
The snowpack is generally well consolidated and stable. On shady slopes there is frequently unbonded powder frozen to the surface or, in exposed high-altitude terrain, wind-crusts prevail. On the sunny side, the melt-freeze crust which is capable of bearing loads in the morning softens up in the sunshine during the day. At intermediate altitudes the snowpack base is partly moist which can promote gliding movements of the snowpack. Up to 1400m sunny slopes are mostly bare of snow.

Outlook

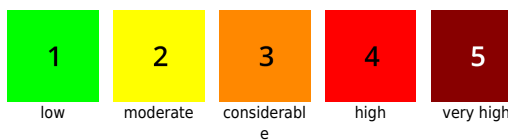
In the next few days, the forecast further increase of daytime warming can lead to the onset of typical springtime conditions including daytime avalanche danger cycle in steep sunny terrain.

Translated by Jeffrey McCabe, www.creativtrans.com

Avalanche problems



Danger ratings



Expositions

