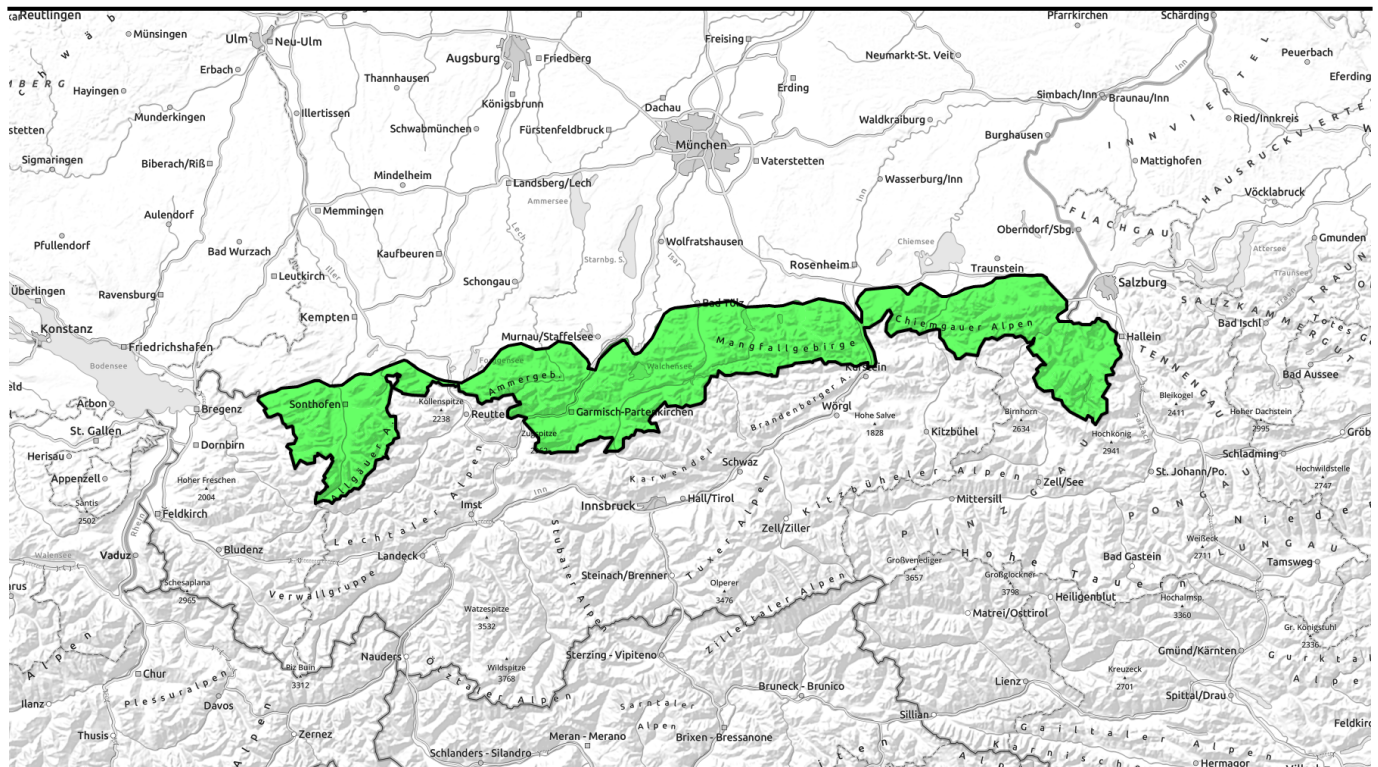


10.03.2022



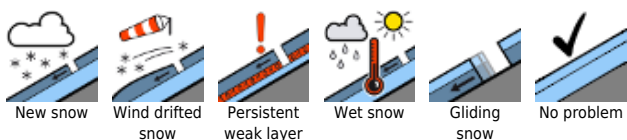
Favorable conditions in the Bavarian Alps



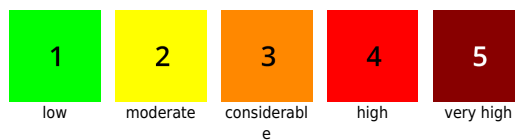
Bayerische Voralpen Mitte, Bayerische Voralpen Ost, Chiemgauer Alpen West, Chiemgauer Alpen Ost, Bayerische Voralpen West, Ammergauer Alpen, Allgäuer Hauptkamm, Werdenfelser Alpen, Berchtesgadener Alpen



Avalanche problems



Danger ratings

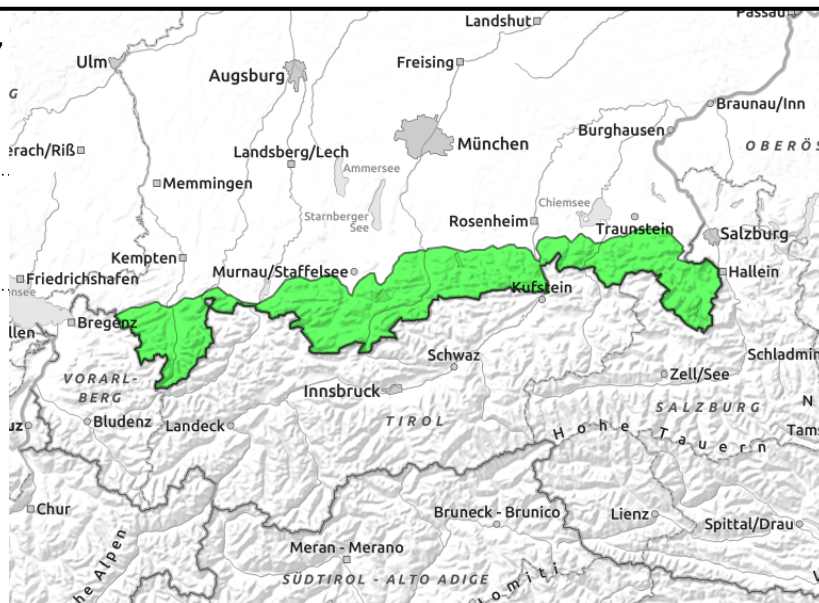
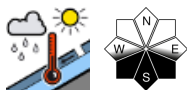


Expositions



10.03.2022

Bayerische Voralpen Mitte, Bayerische Voralpen Ost, Chiemgauer Alpen West, Chiemgauer Alpen Ost, Bayerische Voralpen West, Ammergauer Alpen, Allgäuer Vorberge, Allgäuer Hauptkamm, Werdenfeller Alpen, Berchtesgadener Alpen



Caution: glide-snow avalanches and small wet loose-snow avalanches on south-facing slopes

Avalanche danger is low. As a result of the rising temperatures, the wet-snow problem gains in importance. On south-facing slopes in the latter part of the day, small wet loose-snow avalanches can trigger naturally in extremely steep terrain. Isolated glide-snow avalanches are possible on steep grass-covered slopes, which can medium size in the Allgäu. Glide cracks are bellwethers of the danger.

Snowpack structure

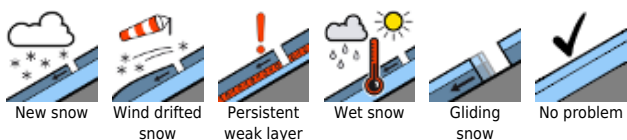
The snowpack is largely stable. Deeply embedded inside the old snowpack on shady slopes at high altitudes there are faceted crystals locally, near crusts, which have persisted but are unlikely to trigger. On shady slopes there is settled, unbonded powder atop a compact old snowpack surface or, in exposed high-altitude terrain, wind-crusts. On south-facing slopes, the melt-freeze crust which is capable of bearing loads softens up in the sunshine. Below 2000 m the snowpack fundament is often moist, gliding movements over smooth ground are being observed.

Outlook

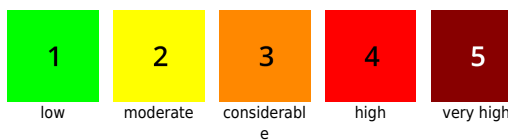
Avalanche danger is expected to remain low.

Translated by Jeffrey McCabe, www.creativtrans.com

Avalanche problems



Danger ratings



Expositions

