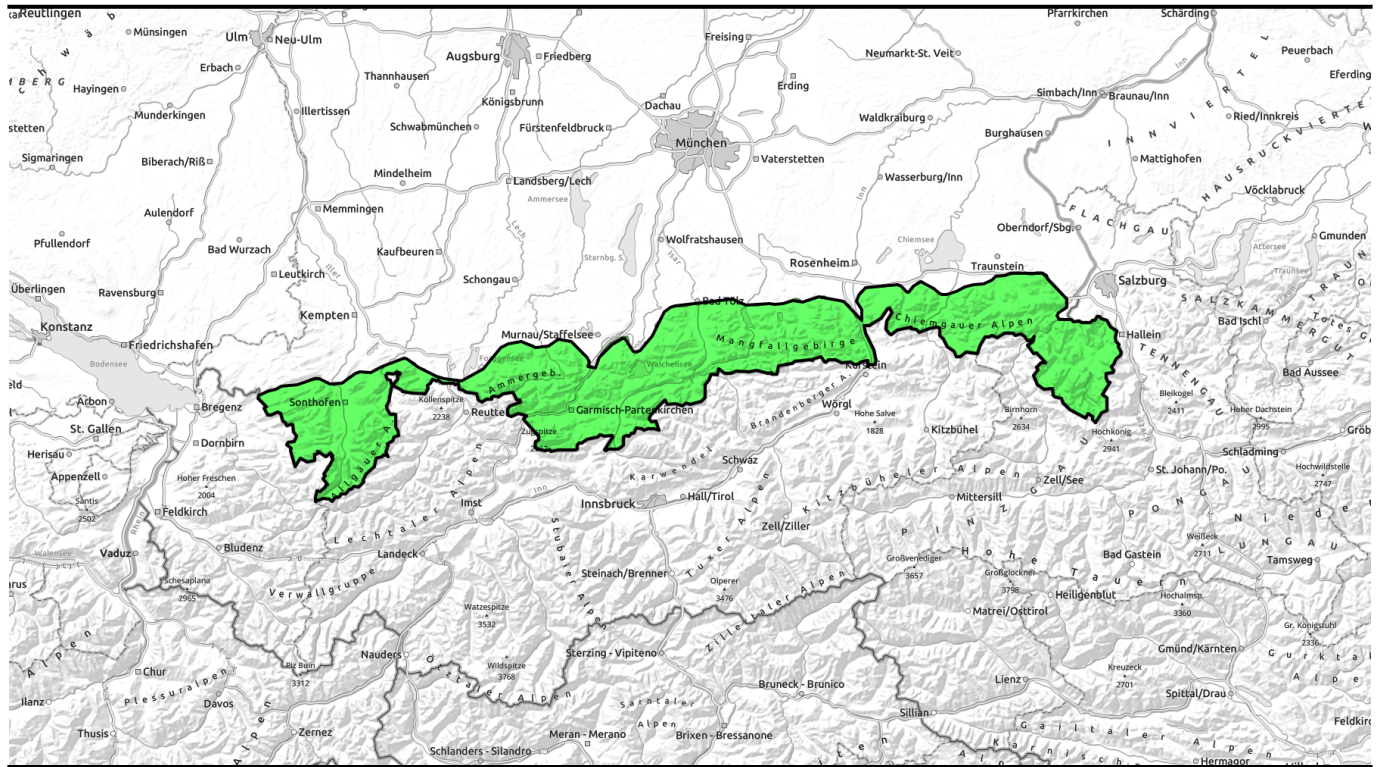




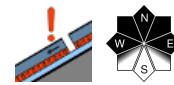
08.03.2022



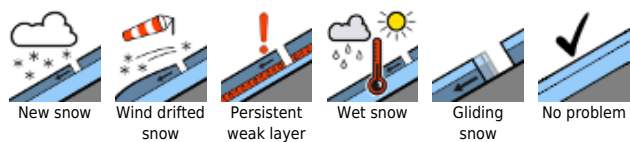
Favorable conditions in the Bavarian Alps



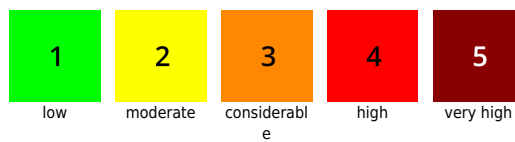
Bayerische Voralpen Mitte, Bayerische Voralpen Ost, Chiemgauer Alpen West, Chiemgauer Alpen Ost, Bayerische Voralpen West, Ammergauer Alpen, Allgäuer Hauptkamm, Werdenfelser Alpen, Berchtesgadener Alpen



Avalanche problems



Danger ratings

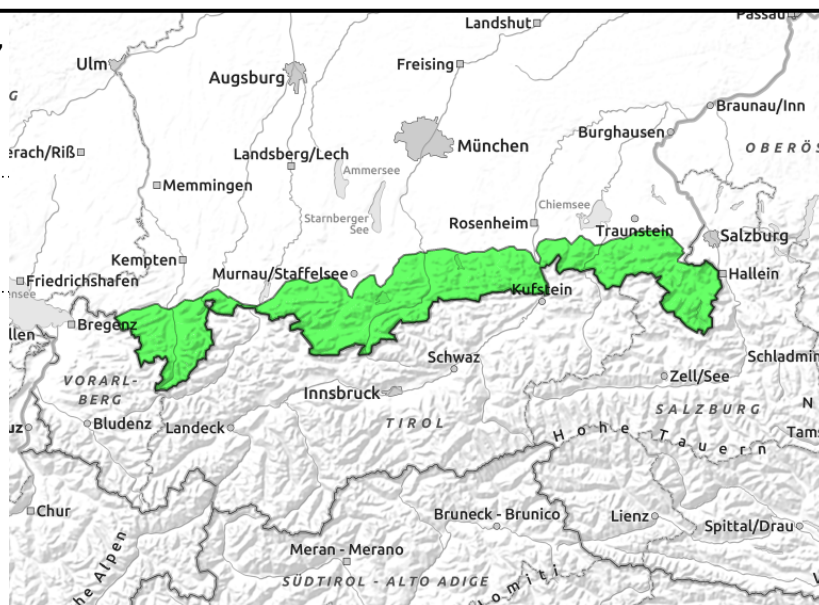
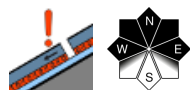


Expositions



08.03.2022

Bayerische Voralpen Mitte, Bayerische Voralpen Ost, Chiemgauer Alpen West, Chiemgauer Alpen Ost, Bayerische Voralpen West, Ammergauer Alpen, Allgäuer Vorberge, Allgäuer Hauptkamm, Werdenfeller Alpen, Berchtesgadener Alpen



Isolated avalanche prone locations on high-altitude shady slopes

Avalanche danger is low. Weak layers deeply embedded inside the snowpack are a threat over small areas. Danger zones occur on high-altitude extremely steep shady slopes, and there, most likely in transitions from deep to shallow snow, e.g. at entries into gullies. Small-to-medium slab avalanches can be triggered on few slopes by large additional loading.

Isolated glide-snow avalanches on smooth, steep grass-covered slopes are possible. In the Allgäu these can reach medium size. Glide cracks are bellwethers of the danger.

Snowpack structure

The snowpack is largely stable. Deeply embedded inside the old snowpack on shady slopes at high altitudes there are faceted crystals locally, near crusts, which have persisted. These are unlikely to trigger. Elsewhere the snowpack is largely stable. On shady slopes there is settled, frozen powder atop a compact old snowpack surface or, in exposed high-altitude terrain, wind-crusts. Wherever the sun shines, a melt-freeze crust is formed (of varying thickness) which then softens up during the daytime. On south-facing slopes, firn snow is more and more evident. Below 2000 m the snowpack fundament is often moist, gliding movements over smooth ground are being observed.

Outlook

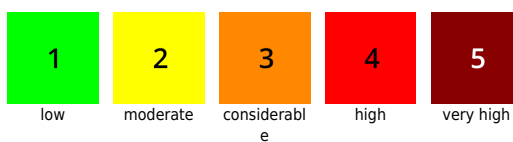
In the next few days, increasingly springlike conditions will appear, with a slight daytime cycle of avalanche danger.

Translated by Jeffrey McCabe, www.creativtrans.com

Avalanche problems



Danger ratings



Expositions

