

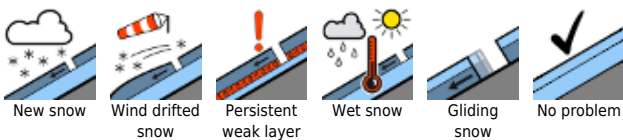
Favorable conditions in the Bavarian Alps.



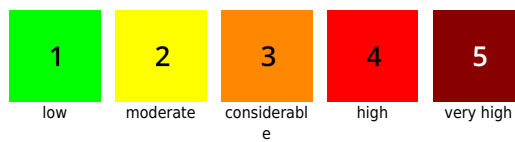
Bayerische Voralpen Mitte, Bayerische Voralpen Ost, Chiemgauer Alpen West, Chiemgauer Alpen Ost, Bayerische Voralpen West, Ammergauer Alpen, Allgäuer Hauptkamm, Werdenfelser Alpen, Berchtesgadener Alpen



Avalanche problems



Danger ratings

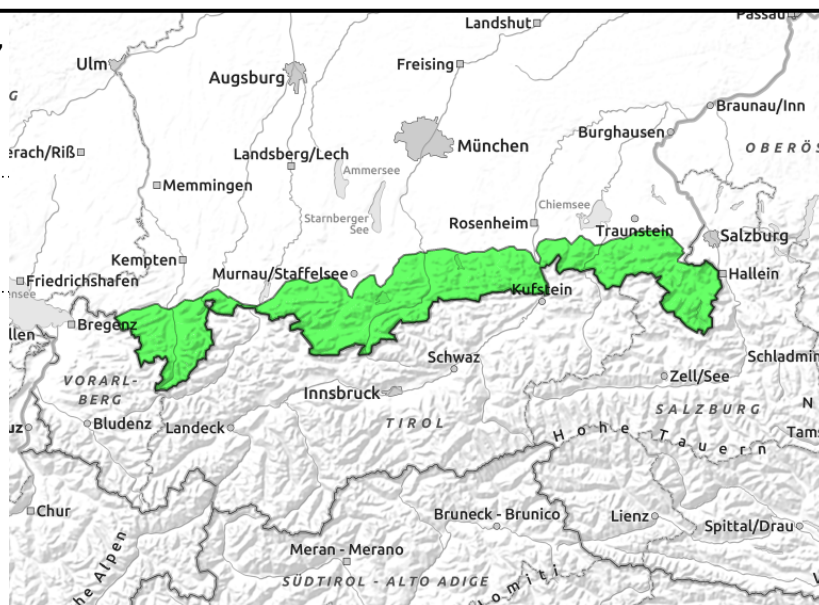
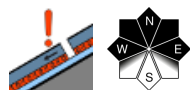


Expositions



05.03.2022

Bayerische Voralpen Mitte, Bayerische Voralpen Ost, Chiemgauer Alpen West, Chiemgauer Alpen Ost, Bayerische Voralpen West, Ammergauer Alpen, Allgäuer Vorberge, Allgäuer Hauptkamm, Werdenfelser Alpen, Berchtesgadener Alpen



Isolated slab avalanches can be triggered in the old snow.

The avalanche danger is low. Weak intermediate layers in the old snow can constitute a spatially limited problem. Isolated avalanche prone locations are found adjacent to ridgelines on very steep slopes in W/N/E aspects and at transitions from deep to shallow snow, e.g. at the entry points into gullies.

On sunny slopes, isolated glide snow avalanches are possible on smooth steep grass-covered slopes.

Snowpack structure

At high altitude, locally weak layers are embedded in the old snowpack in the area of old snowdrift accumulations and faceted crystals in the area of crusts. However, they now only trigger rarely. Otherwise the snowpack is stable and compact. On shady slopes well settled powder prevails, in exposed high altitude terrain wind crusts. In south aspects a melt-freeze crust forms during the night which is partly capable of bearing loads and which only softens again around midday with direct solar radiation. Below 2000m the snowpack base is locally moist.

Outlook

In the next few days the avalanche danger will remain low.

Translated by Jeffrey McCabe, www.creativtrans.com

Avalanche problems



Danger ratings



Expositions

