

Fresh snowdrift accumulations prone to triggering

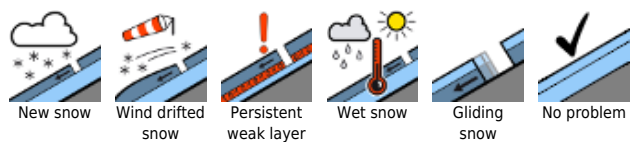


forestline

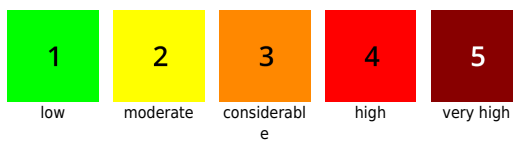
Allgäuer Hauptkamm, Werdenfeller Alpen, Berchtesgadener Alpen, Bayerische Voralpen Ost, Chiemgauer Alpen West, Chiemgauer Alpen Ost, Bayerische Voralpen Mitte, Bayerische Voralpen West, Ammergauer Alpen, Allgäuer Vorberge



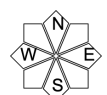
Avalanche problems



Danger ratings

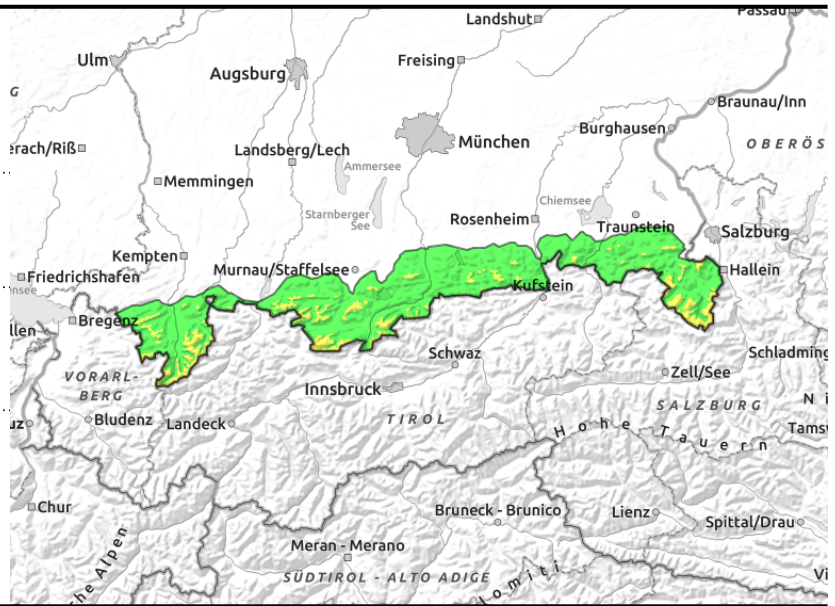
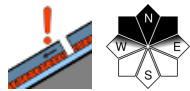
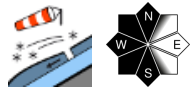


Expositions



27.02.2022

Allgäuer Hauptkamm, Werdenfelser Alpen, Berchtesgadener Alpen, Bayerische Voralpen Ost, Chiemgauer Alpen West, Chiemgauer Alpen Ost, Bayerische Voralpen Mitte, Bayerische Voralpen West, Ammergauer Alpen, Allgäuer Vorberge



Large-sized avalanches possible at high altitudes

Avalanche danger above the treeline is moderate, below that altitude danger is low. Main problem: fresh snowdrift accumulations. Danger zones occur particularly in steep S/W/N ridgeline terrain and in wind-loaded gullies and bowls. The increase in frequency and size with ascending altitude. Avalanches in places can be triggered even by the weight of one person and reach medium-size at high altitudes. Apart from the risks of being buried in snow, there is also the danger of being forced to take a fall. Apart from this, there is a persistent weak layer at high altitudes. On shady slopes slab avalanches can in isolated cases trigger where the snow is shallow and possibly grow to large size.

Snowpack structure

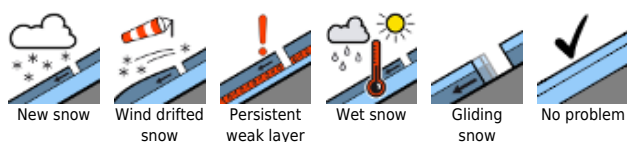
With ascending altitude stronger eastern winds are transporting the loose fresh snow from Saturday. In protected terrain the fresh drifts are being deposited atop soft layers. In many places there are embedded layers of graupel. More deeply embedded inside the snowpack are intermediate layers of faceted crystals near melt-freeze crusts. Snow depths vary greatly, but in exposed zones and at low altitudes.

Outlook

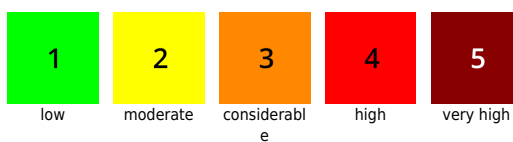
Tranquil weather (high-pressure front) will make avalanche danger slowly recede.

Translated by Jeffrey McCabe, www.creativtrans.com

Avalanche problems



Danger ratings



Expositions

