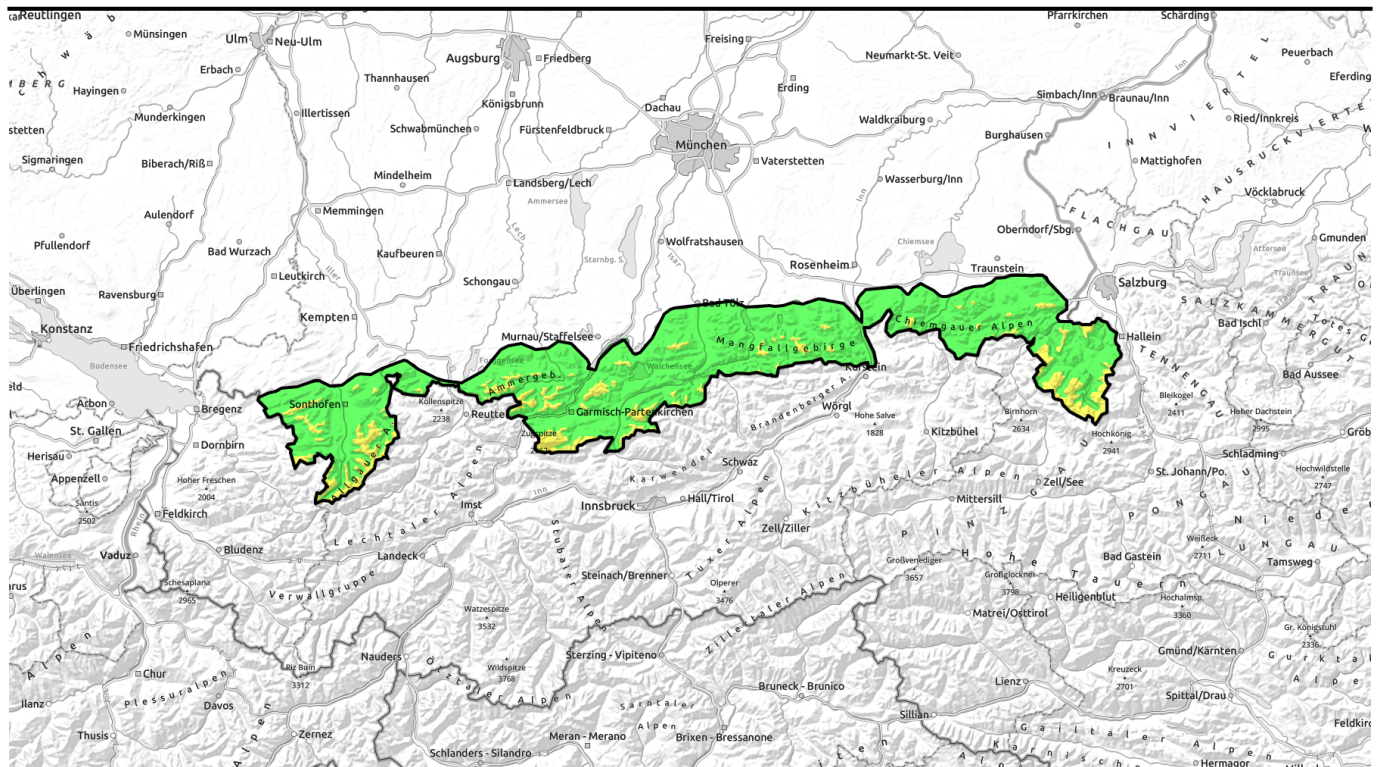


14.02.2022



Dangerously large slab avalanches can be triggered in old snow in isolated cases.

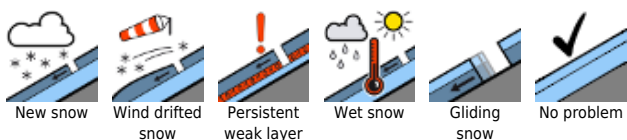


forestline

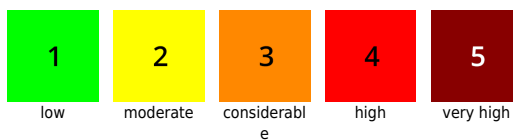
Allgäuer Vorberge, Allgäuer Hauptkamm, Ammergauer Alpen, Bayerische Voralpen West, Werdenfelser Alpen, Bayerische Voralpen Mitte, Bayerische Voralpen Ost, Chiemgauer Alpen West, Chiemgauer Alpen Ost, Berchtesgadener Alpen



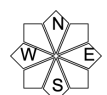
Avalanche problems



Danger ratings

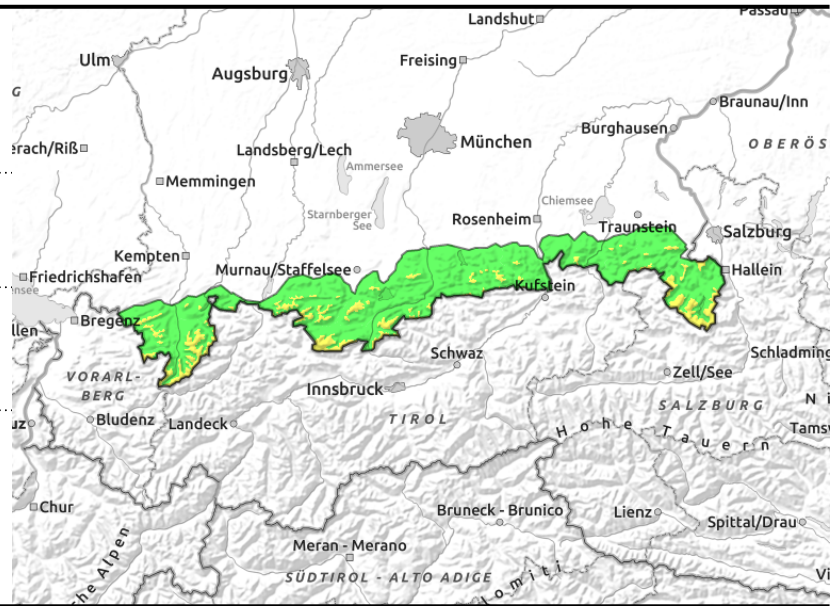
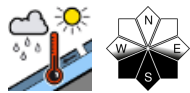
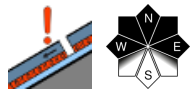


Expositions



14.02.2022

Allgäuer Vorberge, Allgäuer Hauptkamm, Ammergauer Alpen, Bayerische Voralpen West, Werdenfeller Alpen, Bayerische Voralpen Mitte, Bayerische Voralpen Ost, Chiemgauer Alpen West, Chiemgauer Alpen Ost, Berchtesgadener Alpen



Danger of wet-snow avalanches rising at low altitude during course of day.

Avalanche danger in the Bavarian Alps is moderate above the treeline, below that altitude danger is low but rises to moderate during the day due to solar radiation. Main problem: intermediate layers which are prone to triggering in the old snow. Avalanche prone locations occur on steep W/N/E facing slopes where the snow is shallow, e.g. at rims of wind-loaded gullies. In places, one sole winter sports enthusiast can trigger a slab. Frequency and size of danger zones increase with ascending altitude, and avalanches can grow to large size in isolated cases.

Apart from that, due to increasing moistness at intermediate altitudes in steep rocky terrain, generally small, wet loose-snow avalanches can trigger naturally. On steep grass-covered slopes, isolated medium-sized glide-snow avalanches are possible. Glide cracks are red flags, indicating imminent danger.

Near ridges, furthermore, small snowdrift accumulations are prone to triggering in places at high altitudes.

Snowpack structure

Weather

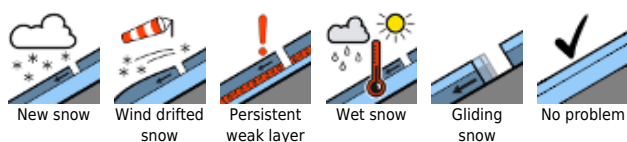
The snowpack surface at high altitudes shows stark effects from wind, only in protected shady zones is there still loose snow. Beneath the snowdrift accumulations from the last period of precipitation are faceted crystals beneath a melt-freeze crust, this layer becomes more pronounced with ascending altitude and lies (depending on the distribution of the old snowdrifts) dangerously near the surface. The danger is not detectable from above the snowpack. Near ridges, small snowdrifts are often prone to triggering. At lower altitudes and on sunny slopes the snowpack is melt-freeze encrusted in early morning, often thoroughly wet, then forfeits its firmness during the day through solar radiation.

Outlook

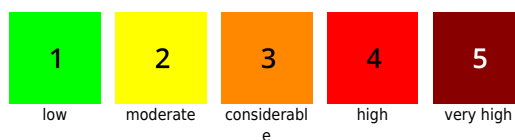
As a result of some fresh snow and wind, the snowdrift problem at high altitudes will intensify on Tuesday and on Wednesday.

Translated by Jeffrey McCabe, www.creativtrans.com

Avalanche problems



Danger ratings



Expositions

