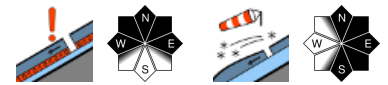


Weak layers in old snowpack are often prone to triggering

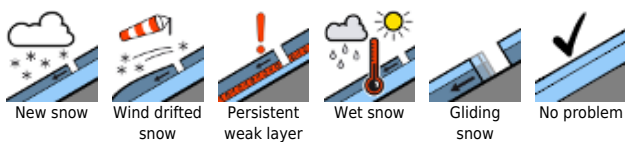


forestline

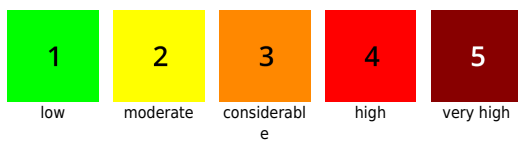
Allgäuer Vorberge, Allgäuer Hauptkamm, Ammergauer Alpen, Bayerische Voralpen West, Werdenfeller Alpen, Bayerische Voralpen Mitte, Bayerische Voralpen Ost, Chiemgauer Alpen West, Chiemgauer Alpen Ost, Berchtesgadener Alpen



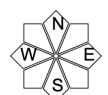
Avalanche problems



Danger ratings

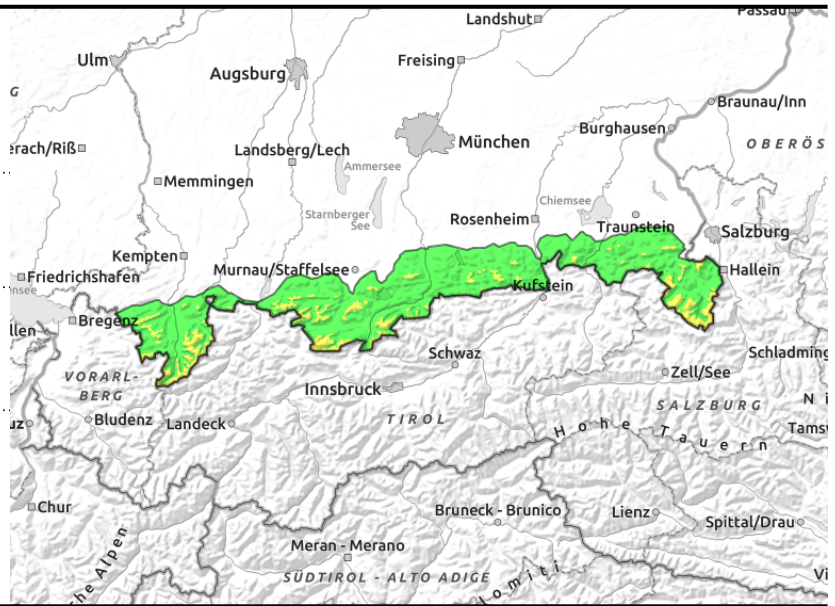
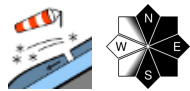
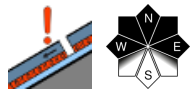


Expositions



12.02.2022

Allgäuer Vorberge, Allgäuer Hauptkamm, Ammergauer Alpen, Bayerische Voralpen West, Werdenfeller Alpen, Bayerische Voralpen Mitte, Bayerische Voralpen Ost, Chiemgauer Alpen West, Chiemgauer Alpen Ost, Berchtesgadener Alpen



Heed also ridgeline snowdrifts. Risk of falling.

Avalanche danger in the Bavarian Alps is moderate above the treeline, below that altitude danger is low. Main problem: intermediate layers which are prone to triggering in the old snow. Avalanche prone locations occur on steep W/N/E facing slopes where the snow is shallow, e.g. at rims of wind-loaded gullies. In places, one sole winter sports enthusiast can trigger a slab. Frequency and size of danger zones increase with ascending altitude, and avalanches can grow to large size in isolated cases.

Near ridgelines, in addition, small snowdrift accumulations which were generated on Friday are prone to triggering.

At intermediate altitudes on wind-loaded steep grass-covered slopes, the snowpack can glide in entirety over the ground. Glide-snow avalanches can grow to medium size. Glide cracks are red flags.

Snowpack structure

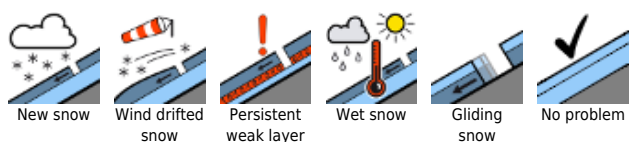
The snowpack shows striking effects from wind: crests and ridges are windblown, gullies and bowls are filled to the brim with drifts. Inside the old snowpack at higher altitudes are faceted crystals beneath a thin melt-freeze crust. This weak layer is more pronounced at high altitudes, lies either near to the surface or deeper down, depending on wind influence. Near ridges the drifts from Friday are prone to triggering. At lower altitudes the snowpack is compact beneath the loose fresh snow and thoroughly wet in many places.

Outlook

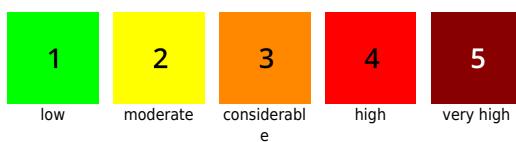
Avalanche danger is not expected to change significantly on Sunday.

Translated by Jeffrey McCabe, www.creativtrans.com

Avalanche problems



Danger ratings



Expositions

