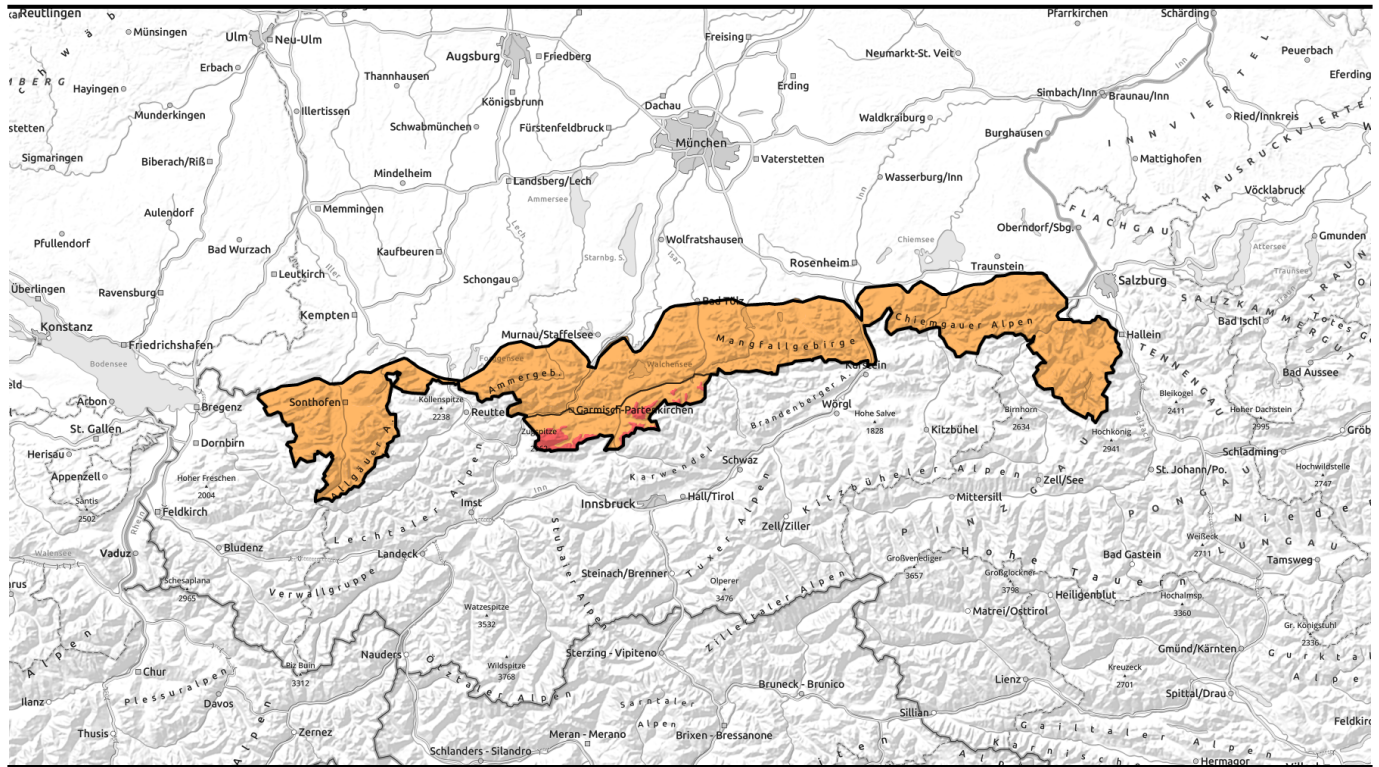



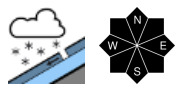



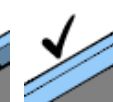
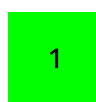





01.02.2022



Update: more fresh snow than was forecast. Considerable/High avalanche danger in the Bavarian Alps

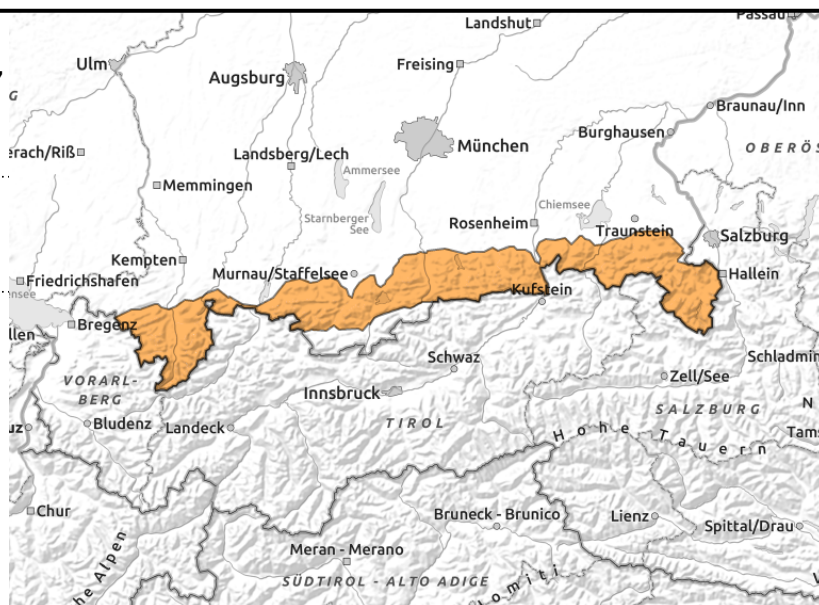
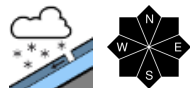
	Ammergauer Alpen, Bayerische Voralpen West, Bayerische Voralpen Mitte, Bayerische Voralpen Ost, Chiemgauer Alpen Ost, Chiemgauer Alpen West, Allgäuer Vorberge, Allgäuer Hauptkamm, Berchtesgadener Alpen	
	Werdenfelser Alpen 2000 m	

Avalanche problems	Danger ratings	Expositions
 New snow  Wind drifted snow  Persistent weak layer  Wet snow  Gliding snow  No problem	 1 low  2 moderate  3 considerable  4 high  5 very high	



01.02.2022

Ammergauer Alpen, Bayerische Voralpen West, Bayerische Voralpen Mitte, Bayerische Voralpen Ost, Chiemgauer Alpen Ost, Chiemgauer Alpen West, Allgäuer Vorberge, Allgäuer Hauptkamm, Berchtesgadener Alpen



Amid strong winds and fresh snow, snowdrift accumulations are forming which are prone to triggering

Avalanche danger is considerable. The main problem: fresh snow and freshly generated snowdrifts. Numerous avalanche prone locations are found in steep terrain in all aspects, particularly near ridgelines, in wind-loaded gullies and bowls, and distant from ridges behind protruberances. Medium to large-sized slab avalanches can often be triggered by one single skier/boarder. Loose-snow and slab avalanches can also trigger naturally on steep slopes and in the major areas of precipitation, and grow to large size.

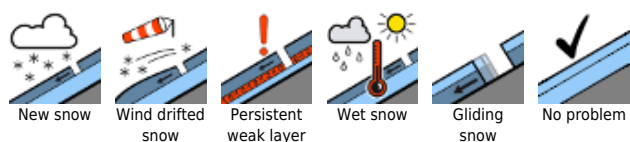
Snowpack structure

Storm winds, low temperatures, fresh snow (30-50 cm), up to 60 cm in barrier cloud regions, will generate new snowdrift accumulations. Inside the drifts are weak intermediate layers with graupel. All in all, the snowpack shows major effects from wind impact. The old snowpack is generally stable, at low altitudes it is shallow and thoroughly wet.

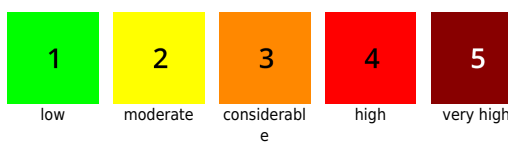
Outlook

Further precipitation and strong winds are forecast. Avalanche danger levels will continue to rise.

Avalanche problems



Danger ratings

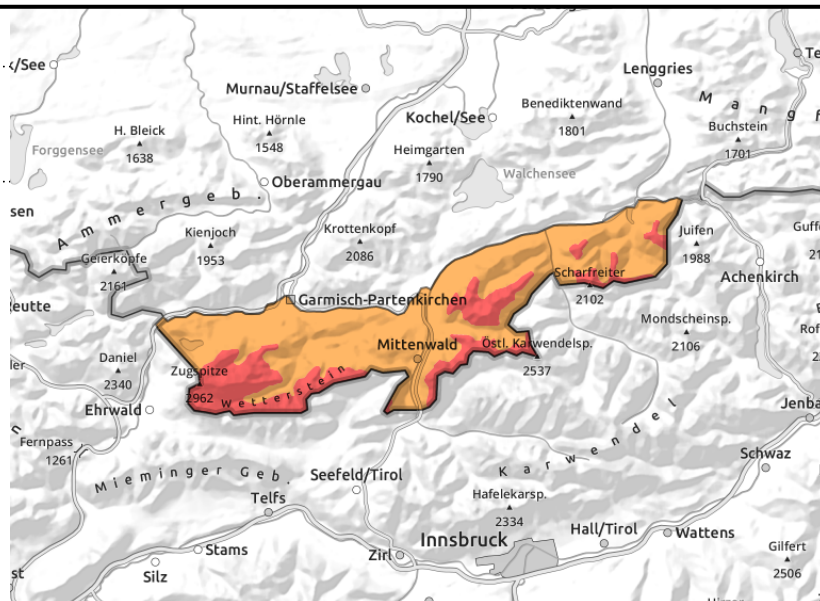
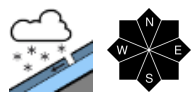


Expositions



01.02.2022

Werdenfeller Alpen



Amid strong winds and fresh snow, snowdrift accumulations are forming which are prone to triggering

Avalanche danger above 2000 m is high, below that altitude danger is considerable. Numerous avalanche prone locations are found on very steep slopes in all aspects, especially near ridgelines, in wind-loaded gullies and bowls and distant from ridges behind protruberances. Large slab avalanches can trigger even by the weight of one sole skier/boarder. Furthermore, large and, in isolated cases, even very large loose-snow and slab avalanches can release naturally on steep slopes.

Snowpack structure

Storm winds, low temperatures, fresh snow (30-50 cm), up to 70 cm in barrier cloud regions, will generate new snowdrift accumulations. Inside the drifts are weak intermediate layers with graupel. All in all, the snowpack shows major effects from wind impact. The old snowpack is generally stable, at low altitudes it is shallow and thoroughly wet.

Outlook

Further precipitation and strong winds are forecast. Avalanche danger levels will continue to rise.

Translated by Jeffrey McCabe, www.creativtrans.com

Avalanche problems



Danger ratings



Expositions

