

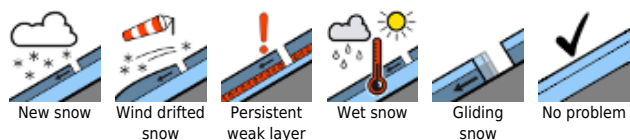
## Abundant fresh snow + storm-strength winds: wide-ranging trigger-sensitive snowdrifts being generated



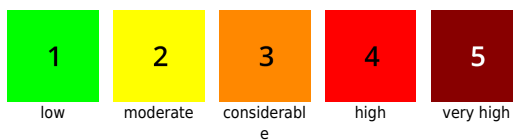
Ammergauer Alpen, Bayerische Voralpen West, Bayerische Voralpen Mitte, Bayerische Voralpen Ost, Chiemgauer Alpen Ost, Chiemgauer Alpen West, Allgäuer Vorberge, Allgäuer Hauptkamm, Werdenfelser Alpen, Berchtesgadener Alpen



### Avalanche problems



### Danger ratings

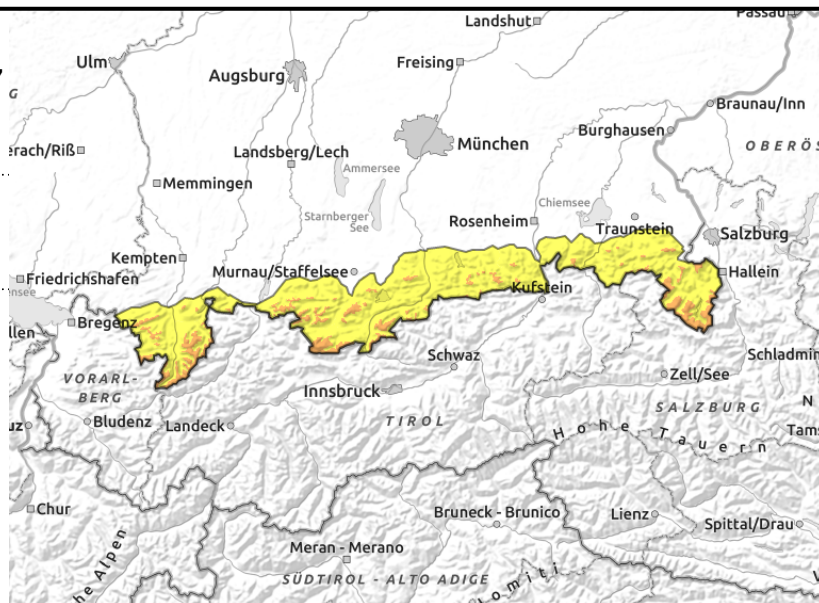


### Expositions



**01.02.2022**

**Ammergauer Alpen, Bayerische Voralpen West, Bayerische Voralpen Mitte, Bayerische Voralpen Ost, Chiemgauer Alpen Ost, Chiemgauer Alpen West, Allgäuer Vorberge, Allgäuer Hauptkamm, Werdenfelser Alpen, Berchtesgadener Alpen**



## Amid strong winds and fresh snow, snowdrift accumulations are forming widespread which are prone to triggering

Avalanche danger above 1400 m is considerable, below that altitude danger is moderate. The main problem: fresh snow and freshly generated snowdrifts. Numerous avalanche prone locations are found in steep terrain in all aspects, particularly near ridgelines, in wind-loaded gullies and bowls, and distant from ridges behind protruberances. Medium-sized slab avalanches can often be triggered by one single skier/boarder. Particularly in high altitude zones on heavily wind-loaded slopes, avalanches can grow to large size. Loose-snow and slab avalanches can also trigger naturally on steep slopes and in the major areas of precipitation, and grow to large size.

### Snowpack structure

Storm winds, low temperatures, fresh snow (20-40 cm), up to 50 cm in barrier cloud regions, will generate new snowdrift accumulations. Inside the drifts are weak intermediate layers with graupel. All in all, the snowpack shows major effects from wind impact. The old snowpack is generally stable, at low altitudes it is shallow and thoroughly wet.

### Outlook

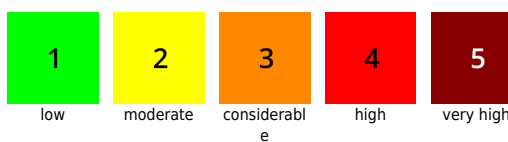
Further precipitation and strong winds are forecast. Avalanche danger levels will continue to rise.

Translated by Jeffrey McCabe, [www.creativtrans.com](http://www.creativtrans.com)

#### Avalanche problems



#### Danger ratings



#### Expositions

