

## Storm winds will persist, snowfall will set in

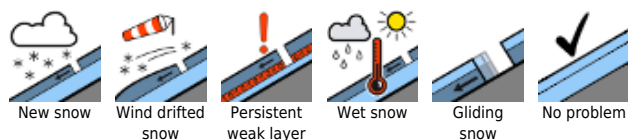


forestline

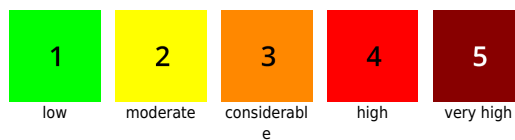
Bayerische Voralpen West, Bayerische Voralpen Mitte, Bayerische Voralpen Ost, Chiemgauer Alpen West, Chiemgauer Alpen Ost, Berchtesgadener Alpen, Werdenfeller Alpen, Ammergauer Alpen, Allgäuer Vorberge, Allgäuer Hauptkamm



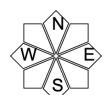
### Avalanche problems



### Danger ratings

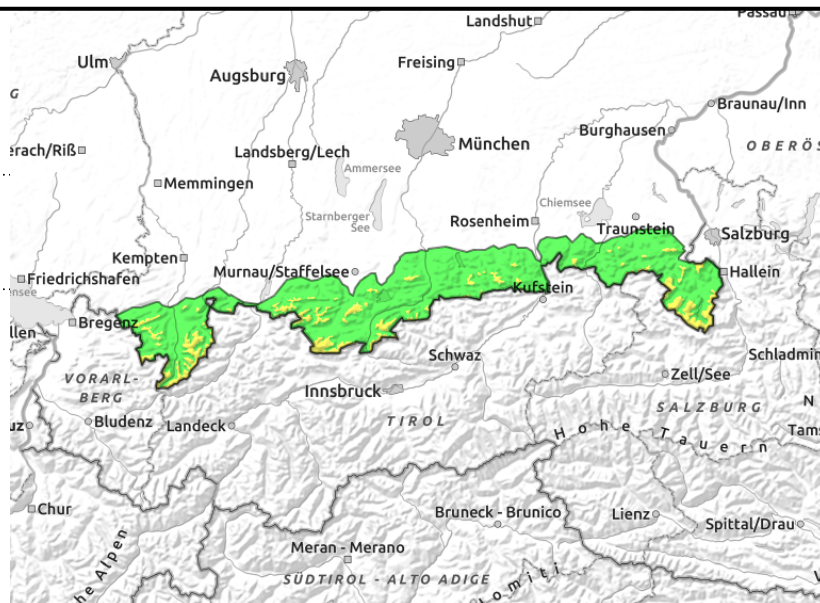
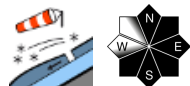


### Expositions



**31.01.2022**

**Bayerische Voralpen West, Bayerische Voralpen Mitte, Bayerische Voralpen Ost, Chiemgauer Alpen West, Chiemgauer Alpen Ost, Berchtesgadener Alpen, Werdenfeller Alpen, Ammergauer Alpen, Allgäuer Vorberge, Allgäuer Hauptkamm**



## Dropping temperatures and fresh snow: fresh, trigger-sensitive snowdrift accumulations

Avalanche danger in the Bavarian Alps is moderate above the timberline, low below that altitude. Fresh snowdrift accumulations are problematic. Numerous avalanche prone locations occur in steep N/E/SW aspects and in freshly wind-loaded gullies and bowls. Small slab avalanches can often be triggered even by minimum additional loading, i.e. the weight of one sole skier. On heavily wind-loaded slopes, avalanches can grow to medium size. Also below the treeline, small slab avalanches are possible in outlying terrain.

### Snowpack structure

The snowpack in the Bavarian Alps shows striking effects from wind impact. Snowdrift accumulations are being ongoingly generated by storm-strength winds particularly at and above the treeline. Due to the approaching snowfall and dropping temperatures, likelihood of triggering will increase. Exposed zones are utterly windblown. The old snow is generally stable. At lower altitudes the thin old snowpack is thoroughly moist and has a melt-freeze crust on the surface.

### Outlook

On Monday night, an additional 30 cm of fresh snow is anticipated, accompanied by constantly stormy winds. Avalanche danger will increase.

Translated by Jeffrey McCabe, [www.creativtrans.com](http://www.creativtrans.com)

#### Avalanche problems



#### Danger ratings



#### Expositions

