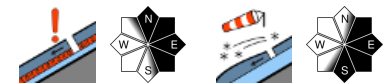


At higher altitudes small snowdrift accumulations being generated adjacent to ridgelines - prone to triggering!



Chiemgauer Alpen West, Chiemgauer Alpen Ost, Berchtesgadener Alpen, Bayerische Voralpen Ost



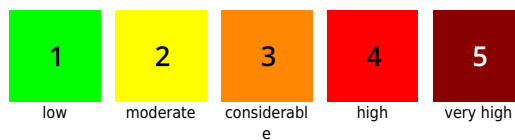
Bayerische Voralpen Mitte, Bayerische Voralpen West, Werdenfelser Alpen, Ammergauer Alpen, Allgäuer Vorberge, Allgäuer Hauptkamm



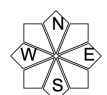
Avalanche problems



Danger ratings

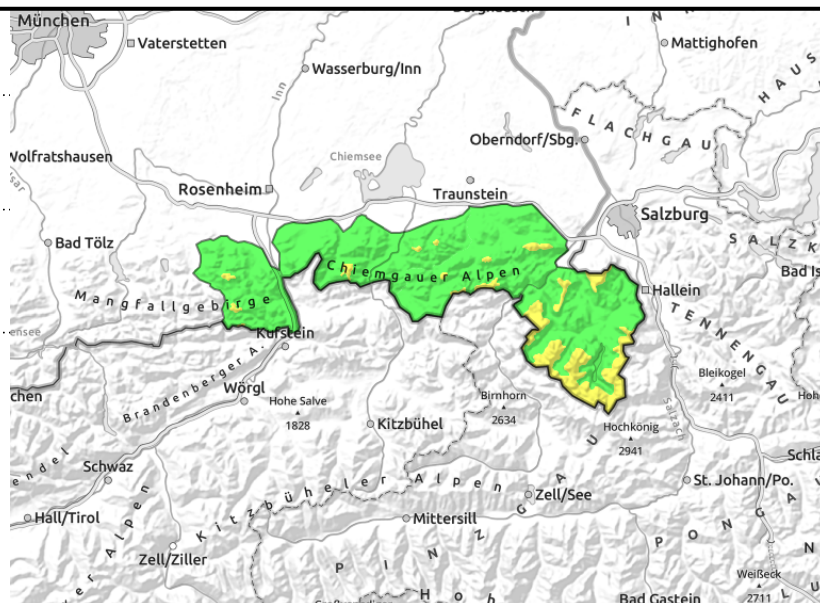
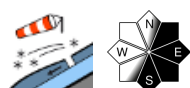
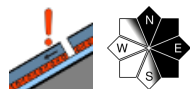


Expositions



27.01.2022

Chiemgauer Alpen West, Chiemgauer Alpen Ost, Berchtesgadener Alpen, Bayerische Voralpen Ost



Weak intermediate layers embedded in snowpack still prone to triggering at higher altitudes

Avalanche danger above the timberline is moderate; below the timberline danger is low. The main problem stems from near-surface snow layers in the old snowpack. In particular by large additional loading medium-sized slab avalanches can release on weak intermediate layers or on an ice crust embedded in the snow deposited on the weekend. Avalanche prone locations are found in steep ridgeline terrain in N/E/SE aspects as well as in wind-loaded gullies and bowls.

In addition, a snowdrift problem emerges. Strong westerly winds that are getting up are increasingly generating small snowdrift accumulations above the timberline which are prone to triggering. The perils of being forced to take a fall in steep terrain exceed those of being buried in snow masses.

Snowpack structure

The snow of the weekend has settled considerably. On sunny slopes it is becoming superficially moist down to intermediate altitudes. During the night, a breakable melt-freeze crust forms at the snowpack surface. At higher altitudes, the surface consists predominantly of breakable wind and melt-freeze crusts. In north-facing terrain there is settled powder. The potential that the westerly winds that are getting up will transport the snow is generally low. Intermediate layers that are prone to triggering are still found in the snowpack near the surface and in blanketed over old packed snowdrift masses.

Outlook

New snow and storm-strength winds are forecast for Friday night. Avalanche danger levels will then increase.

Avalanche problems



Danger ratings

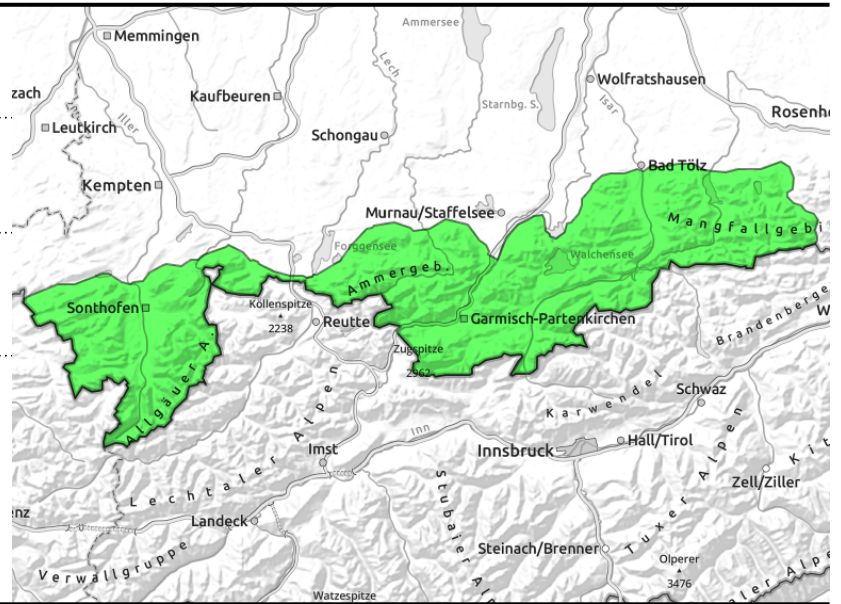
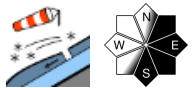
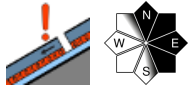


Expositions



27.01.2022

Bayerische Voralpen Mitte, Bayerische Voralpen West, Werdenfeller Alpen, Ammergauer Alpen, Allgäuer Vorberge, Allgäuer Hauptkamm



Caution: Isolated avalanche prone locations in steep wind-loaded gullies at altitude

Avalanche danger is generally low. Near-surface snow layers in the old snowpack are still a problem. Small slab avalanches can release in places, in particular by large additional loading, on weak intermediate layers in the snow deposited on the weekend and in the area of older blanketed snowdrift accumulations. Avalanche prone locations are found at high altitude in steep terrain adjacent to ridgelines in N/E/SE aspects as well as in steep wind-loaded gullies. In addition, a snowdrift problem emerges. Strong westerly winds that are getting up are increasingly generating small snowdrift accumulations above the timberline which are prone to triggering. The perils of being forced to take a fall in steep terrain exceed those of being buried in snow masses.

Snowpack structure

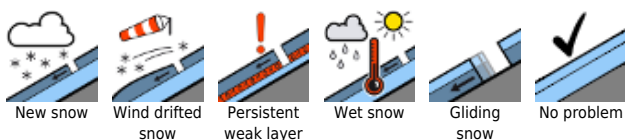
The fresh snow of the weekend was deposited atop a melt-freeze encrusted, stable old snowpack and is widely blanketed by a thin ice crust or a melt-freeze crust. In windward terrain at higher altitudes wind crusts are predominant, elsewhere settled powder. The potential that the westerly winds that are getting up will transport the snow is therefore generally low. Locally, trigger-sensitive intermediate layers persist in the near-surface layers of the snowpack. On sunny slopes at intermediate altitudes the snow moistens during the course of the day. All in all, the snowpack depths are below average, at lower altitudes a solid snow base is lacking in many places.

Outlook

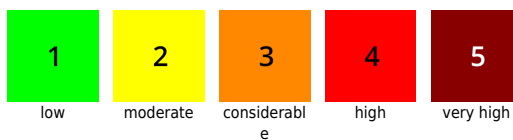
New snow and storm-strength winds are forecast for Friday night. Avalanche danger levels will then increase.

Translated by Jeffrey McCabe, www.creativtrans.com

Avalanche problems



Danger ratings



Expositions

